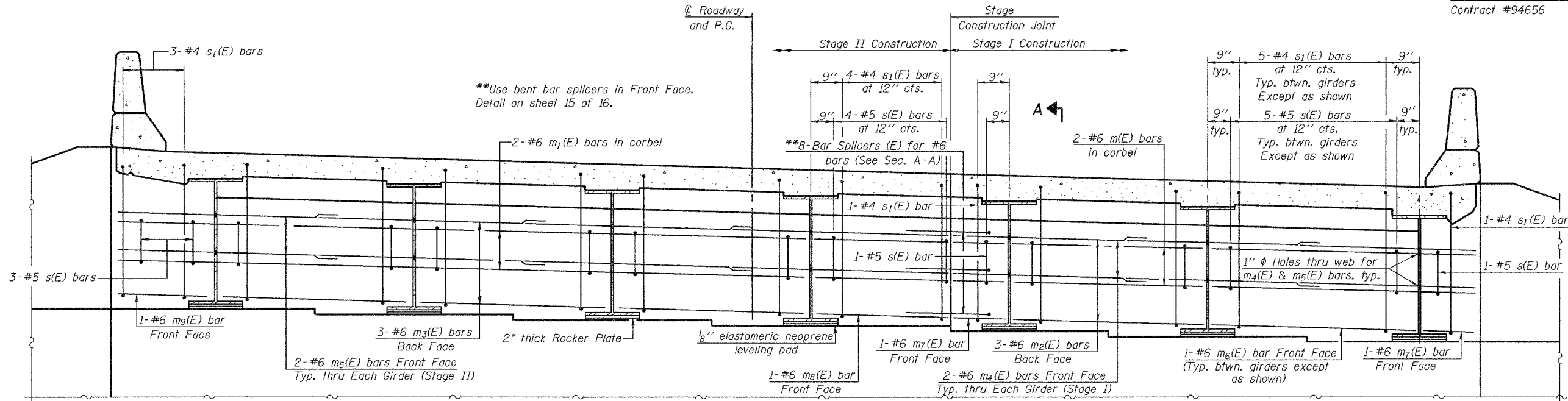


STATE OF ILLINOIS
DEPARTMENT OF TRANSPORTATION

ROUTE NO.	SECTION	COUNTY	TOTAL SHEETS	SHEET NO.
F.A.P. 781	108B-1	CRAWFORD	38	18
FED. ROAD DIST. NO. 7	ILLINOIS	FED. AID PROJECT		

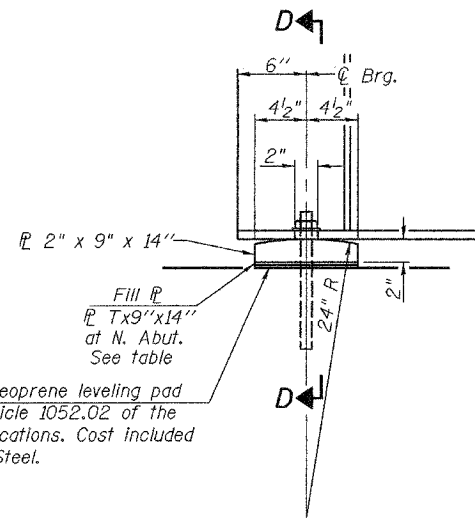
SHEET NO. 9
16 SHEETS
Contract #94656



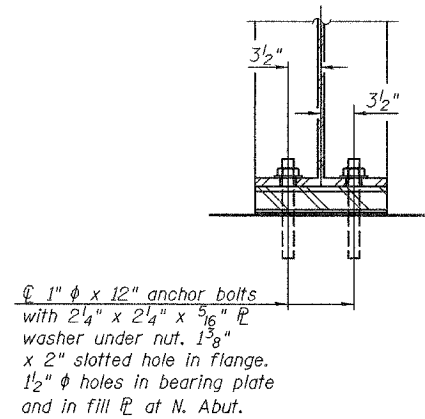
DIAPHRAGM ELEVATION AT SOUTH ABUTMENT A-A

(Looking South)
(Bearing Stiffeners not shown)

MIN. BAR LAP
#6 bar = 2'-9"



ELEVATION AT ABUTMENT



SECTION D-D

FIXED BEARING

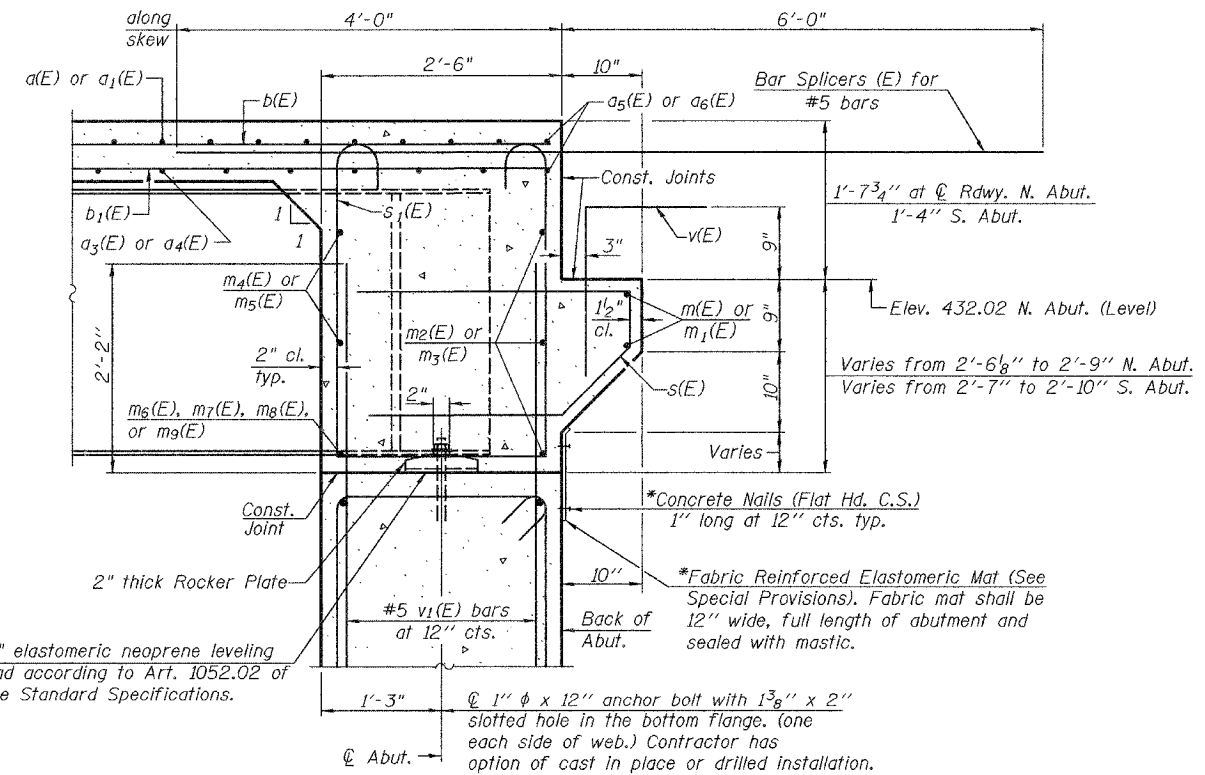
Rocker plates and fill plates shall be AASHTO M270 Gr. 50W.

FILL P TABLE

(N. Abut. only)

Girder	T (in.)
1	0
2	9/16
3	1 1/16
4	9/16
5	1 1/8
6	0
7	0

Notes: Reinforcement bars in diaphragm are billed with superstructure on sheet 7 of 16.
Concrete in diaphragm is included with Concrete Superstructure on sheet 7 of 16.
For details of bars s(E) & s₁(E) see sheet 7 of 16. The s(E) and s₁(E) bars shall be placed parallel to the girders. Spacing for these bars shall be at right angles to the girders.
For anchor bolt details see sheet 12 of 16.
For bar splicers details see sheet 15 of 16.



SECTION A-A

Dimensions at right angles to abutment, except as noted.
*Cost included with Concrete Superstructure.

DESIGNED	W. Beisner
CHECKED	Chi-Cheung Chau
DRAWN	R. Dalsin
CHECKED	C.C.C./S.J.B./S.M.R.

December 13 2005

EXAMINED *Thomas J. Damgalak*
ENGINEER OF BRIDGE DESIGN

PASSED *Ralph E. Anderson*
ENGINEER OF BRIDGES AND STRUCTURES

DIAPHRAGM DETAILS
F.A.P. ROUTE 781 - SECTION 108B-1
CRAWFORD COUNTY
STATION 545+80.00
STRUCTURE NO. 017-0030