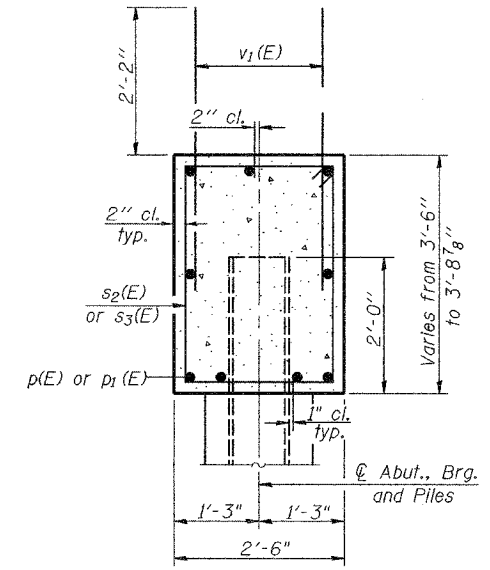
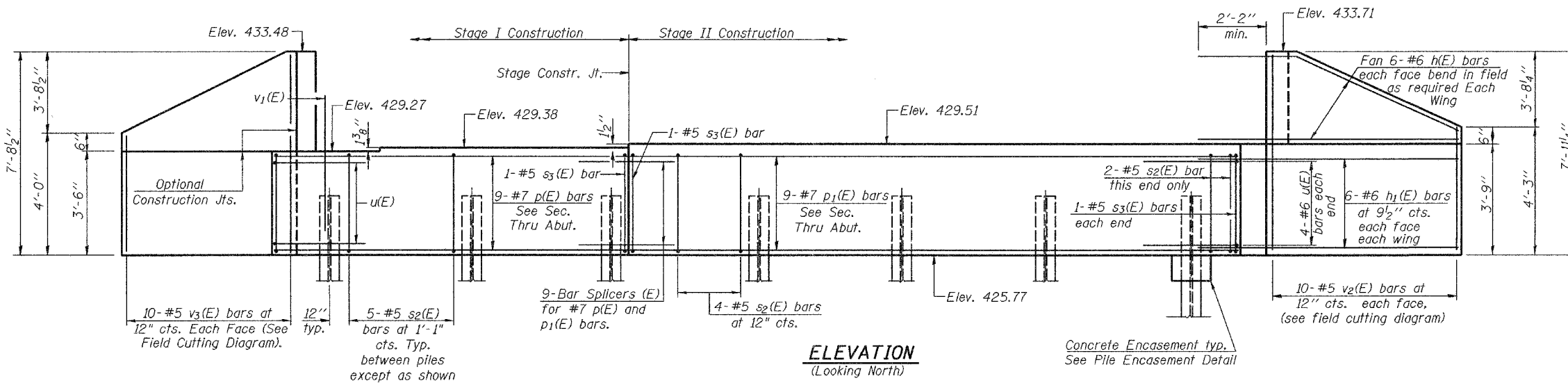


STATE OF ILLINOIS
DEPARTMENT OF TRANSPORTATION

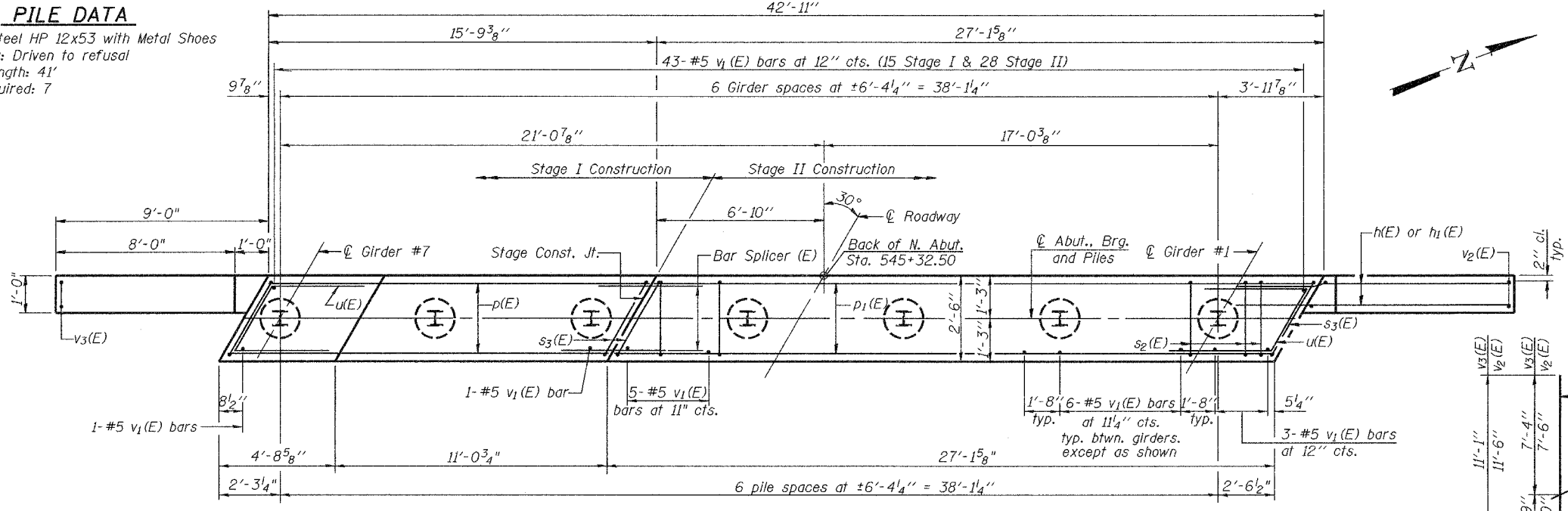
ROUTE NO.	SECTION	COUNTY	SHEET NO.	SHEET NO.
F.A.P. 781	108B-1	CRAWFORD	38	22
FED. ROAD DIST. NO. 7		ILLINOIS	FED. AID PROJECT-	

SHEET NO. 13
16 SHEETS
Contract #94656

Notes: Four steps monolithically with cap.
Reinforcement bars designated (E) shall be epoxy coated.
Space reinforcement in cap to miss anchor bolts.
For anchor bolt installation details see sheet 12 of 16.
For bar splicer details see sheet 15 of 16.



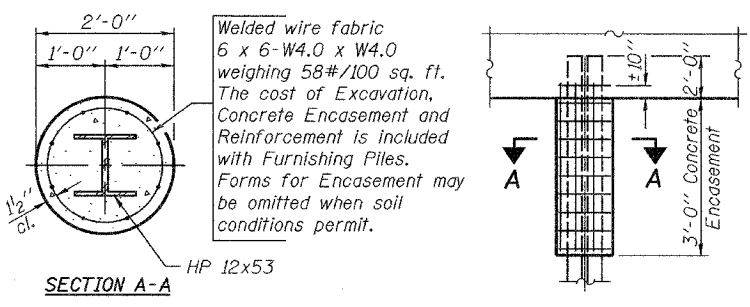
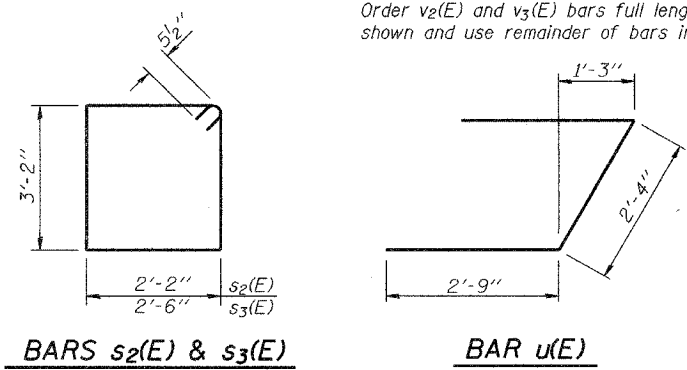
PILE DATA
Type: Steel HP 12x53 with Metal Shoes
Capacity: Driven to refusal
Est. Length: 41'
No. Required: 7



BILL OF MATERIAL

Bar	No.	Size	Length	Shape
h(E)	24	#6	11'-10"	—
h ₁ (E)	24	#6	11'-2"	—
p(E)	9	#7	15'-6"	—
p ₁ (E)	9	#7	26'-10"	—
s ₂ (E)	31	#5	11'-7"	□
s ₃ (E)	4	#5	12'-3"	□
u(E)	8	#6	7'-10"	┌
v ₁ (E)	83	#5	4'-4"	—
v ₂ (E)	10	#5	11'-6"	—
v ₃ (E)	10	#5	11'-1"	—
Concrete Structures		Cu. Yd.	20.0	
Reinforcement Bars, Epoxy Coated		Pound	2740	
Structure Excavation		Cu. Yd.	185.4	
Furnishing Steel Piles HP12x53		Foot	287	
Driving Steel Piles		Foot	287	
Metal Shoes		Each	7	

FIELD CUTTING DIAGRAM
Order v₂(E) and v₃(E) bars full length. Cut as shown and use remainder of bars in opposite face.



ANCHOR BOLT DETAIL

DESIGNED	W. Beisner
CHECKED	Chi-Cheung Chau
DRAWN	R. Dalsin
CHECKED	C.C.C./S.J.B./S.M.R.

December 13 2005
EXAMINED *Thomas J. Donagabadi*
PASSED *Ralph E. Anderson*
ENGINEER OF BRIDGES AND STRUCTURES

PILE ENCASUREMENT DETAIL

NORTH ABUTMENT
F.A.P. ROUTE 781 - SECTION 108B-1
CRAWFORD COUNTY
STATION 545+80.00
STRUCTURE NO. 017-0030