

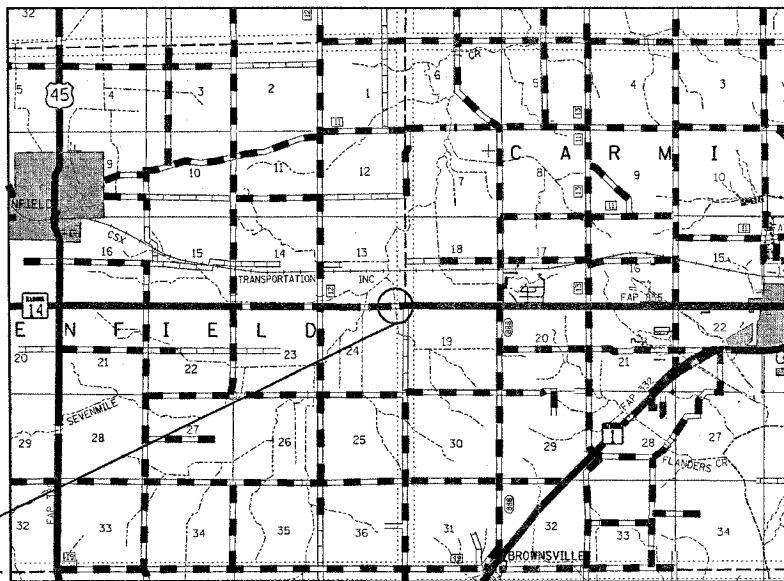
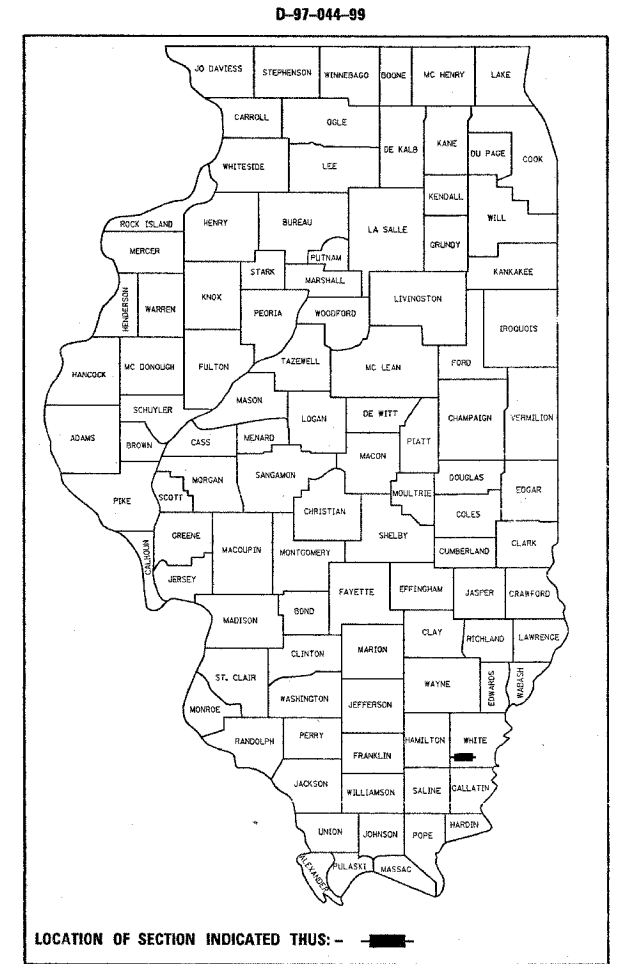
| F.A.P. RTE. | SECTION | COUNTY | TOTAL SHEETS | SHEET NO. |
|-------------|---------|--------|--------------|-----------|
| 855 | 11B-1 | WHITE | 25 | 1 |

STATE OF ILLINOIS
DEPARTMENT OF TRANSPORTATION
DIVISION OF HIGHWAYS
**PROPOSED
HIGHWAY PLANS**

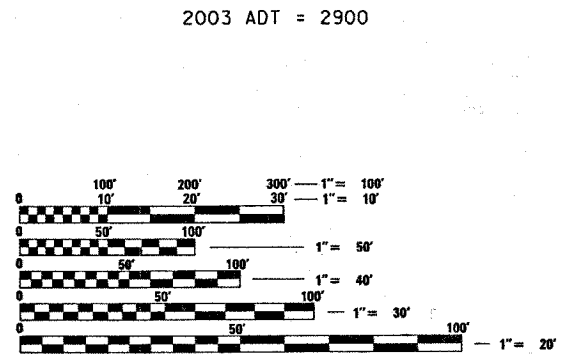
FOR INDEX OF SHEETS, SEE SHEET NO. 2

FAP ROUTE 855 (ILL 14)
SECTION 11B-1
PROJECT NO. BR-855-(005)
WHITE COUNTY

C-97-034-05



PROJECT LOCATION
SECTION 11B-1
STRUCTURE # 097-2013
STATION 283+14.49



FULL SIZE PLANS HAVE BEEN PREPARED USING STANDARD ENGINEERING SCALES. REDUCED SIZED PLANS WILL NOT CONFORM TO STANDARD SCALES. IN MAKING MEASUREMENTS ON REDUCED PLANS, THE ABOVE SCALES MAY BE USED.

J.U.L.I.E.
JOINT UTILITY LOCATION INFORMATION FOR EXCAVATION
1-800-892-0123

GROSS LENGTH = 89.34 FEET = .017 MILES
NET LENGTH = 89.34 FEET = .017 MILES

STATE OF ILLINOIS
DEPARTMENT OF TRANSPORTATION
DIVISION OF HIGHWAYS

SUBMITTED Oct. 24, 2005
Christ H. Reed
DEPUTY DIRECTOR OF HIGHWAYS, REGION ENGINEER

December 9, 2005
Mike Wine
ENGINEER OF DESIGN AND ENVIRONMENT

December 9, 2005
Eric Horn
DEPUTY DIRECTOR OF HIGHWAYS, CHIEF ENGINEER

**PRINTED BY THE AUTHORITY
OF THE STATE OF ILLINOIS**

district
10/26/2005
c:\projects\94771\d04499pa.e.dgn

PROJECT ENGINEER : BILL STANLEY
SQUAD LEADER : JENNIFER WENTHE
DESIGNER : JENNIFER WENTHE
TELEPHONE : 217/342-3951 EX 361