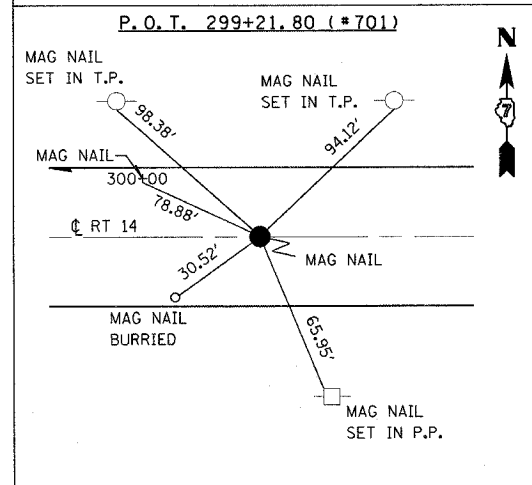
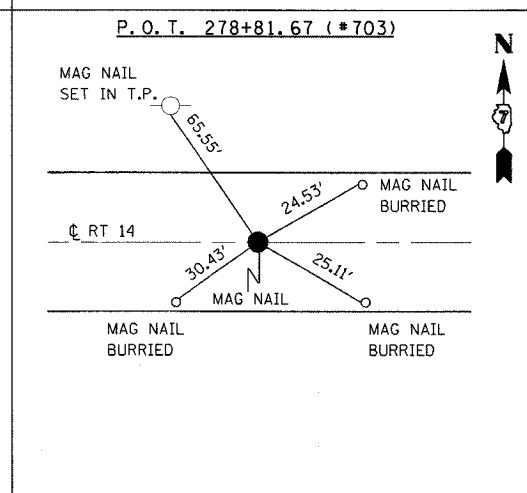
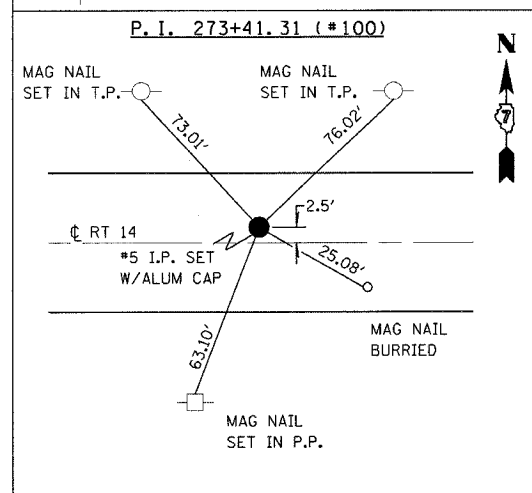
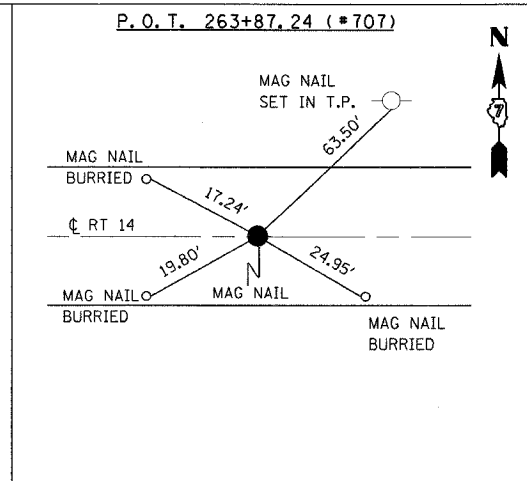
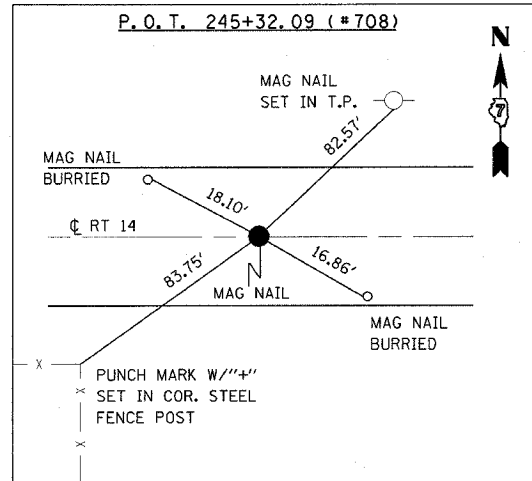
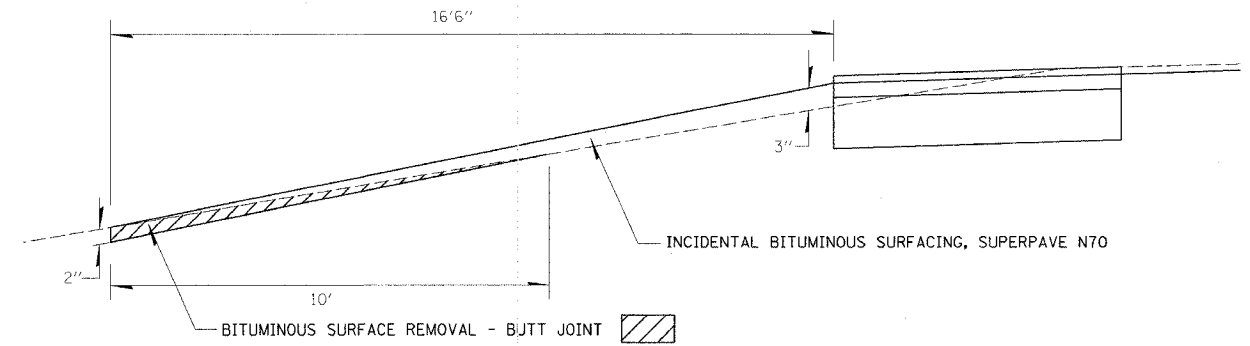


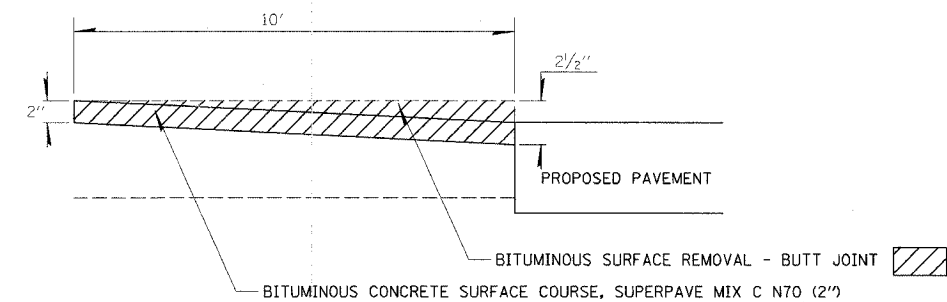
F.A.P. RTE.	SECTION	COUNTY	TOTAL SHEETS	SHEET NO.
855	11B-1	WHITE	25	5
STA.		TO STA.		
FED. ROAD DIST. NO.		ILLINOIS FED. AID PROJECT		



- BM 509 EL. = 402.701 CHISELED SQUARE ON TOP OF W. END OF S. ABUTMENT OF BRIDGE TO HOUSE. STA. 374+12/35' RT.
- BM 510 EL. = 401.210 CHISELED SQUARE ON TOP OF S. END OF W. ABUTMENT OF BRIDGE. (BRIDGE STRUCTURE #0970068) STA. 340+51/20' LT.
- BM 511 EL. = 401.359 BRASS MONUMENT ON TOP OF S. END OF W. ABUTMENT OF BRIDGE. (BRIDGE STRUCTURE #0970066) STA. 307+15/19' LT.
- BM 512 EL. = 394.233 RR SPIKE IN POWER POLE. STA. 289+55/60' RT.
- BM 513 EL. = 398.305 CHISELED SQUARE IN CENTER OF E. HEADWALL OF 4' x 4' BOX CULVERT, SE QUAD. OF RT. 14 AND TOWNSHIP ROAD 600E STA. 282+70/78' LT.
- BM 514 EL. = 398.686 CHISELED SQUARE IN CENTER OF S. HEADWALL OF 2' x 4' BOX CULVERT. STA. 272+18/23' LT.



SIDE ROAD DETAIL



BUTT JOINT DETAIL
STA 282+64.82 TO STA 282+74.82

REVISIONS	
NAME	DATE

ILLINOIS DEPARTMENT OF TRANSPORTATION
DETAILS & TIES
SCALE: VERT. HORIZ.
DATE: DRAWN BY: CHECKED BY:

PLOT DATE = 10/26/2005
FILE NAME = 8FILEL8
PLOT SCALE = 8SCALE8
USER NAME = dstr101