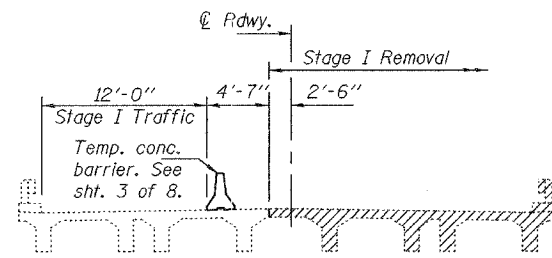
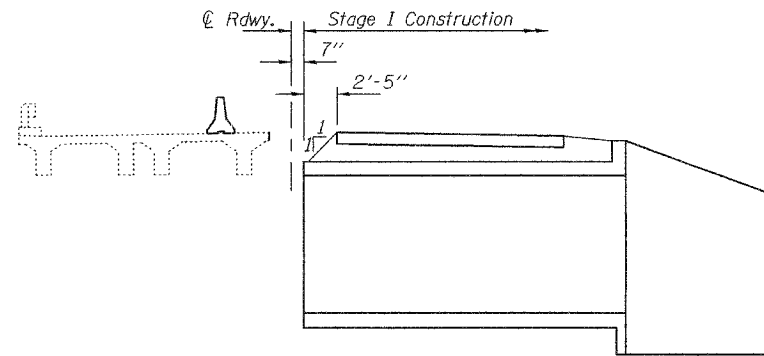


STATE OF ILLINOIS
DEPARTMENT OF TRANSPORTATION

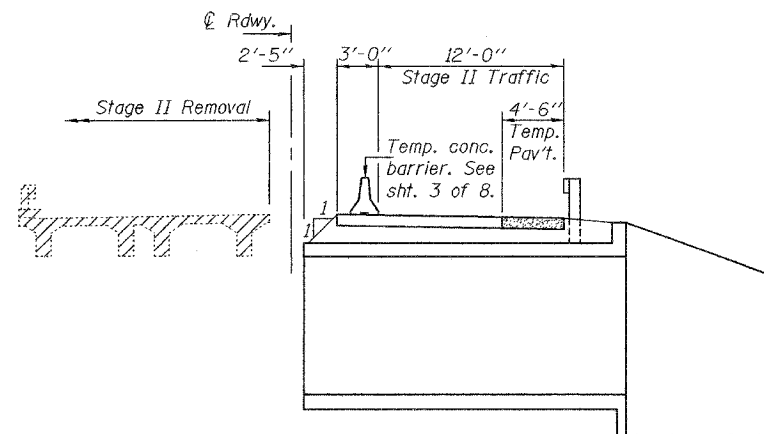
ROUTE NO.	SECTION	COUNTY	TOTAL SHEETS	SHEET NO.	SHEET NO. 2
FAP 855	IIB-1	WHITE	25	12	8 SHEETS
FED. ROAD DIST. NO. 7	ILLINOIS	FED. AID PROJECT	Contract #94771		



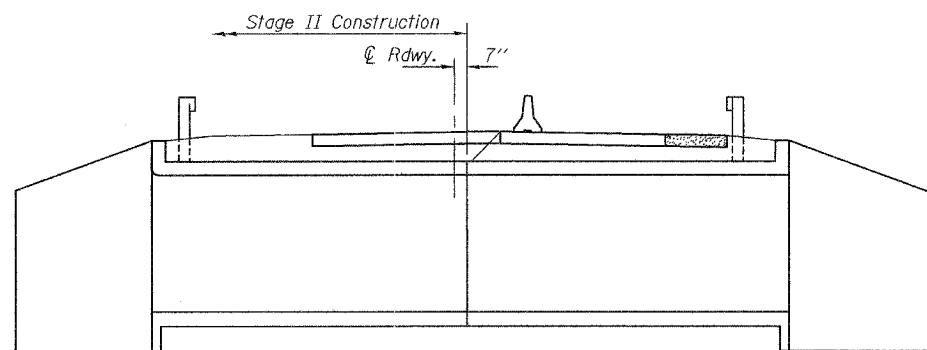
STAGE I REMOVAL



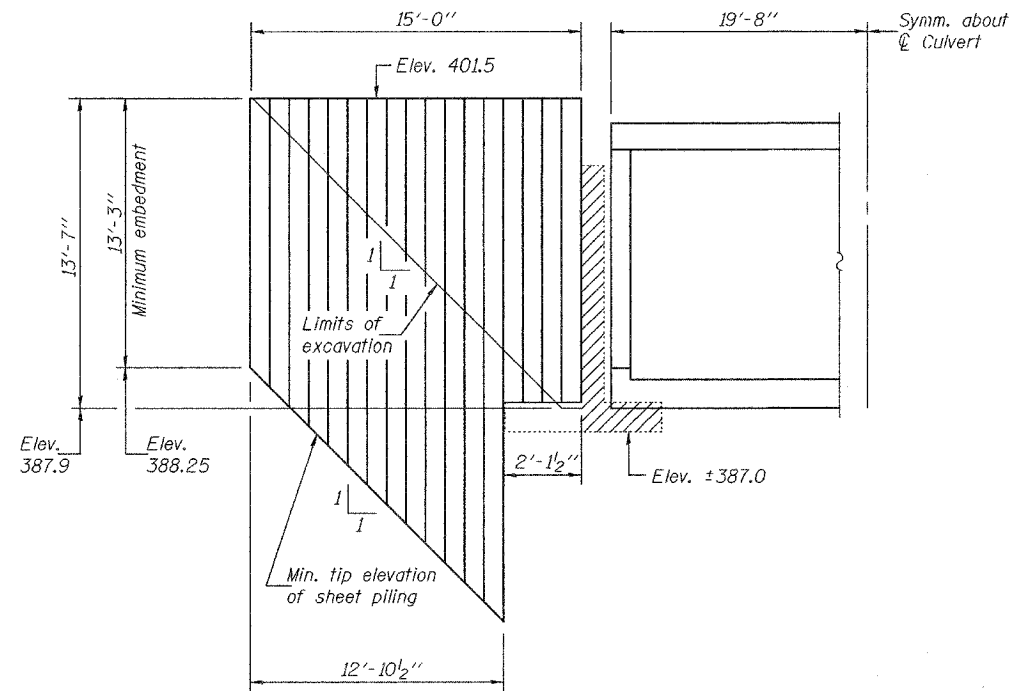
STAGE I CONSTRUCTION



STAGE II REMOVAL



STAGE II CONSTRUCTION



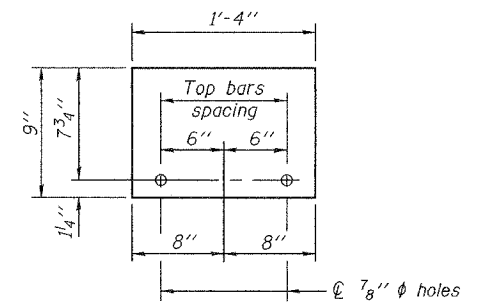
TEMPORARY SHEET PILING DETAIL

If the Contractor chooses to alter the temporary cantilevered sheet piling design requirements shown on the plans, a design submittal including plan details and calculations will be required for review and acceptance by the Engineer.

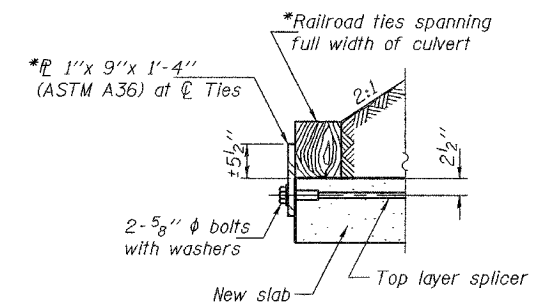
The Contractor shall connect the first sheet to the existing abutment wall to ensure stability of sheets driven to the top of the existing footing. This connection shall be reviewed and accepted by the Engineer and included in the cost of Temporary Sheet Piling.

The minimum section modulus of the sheet piling shall be 16 in³/ft.

Notes: Hatched area indicates removal of existing structures.
Quantity of Temporary Concrete Barrier is included in the roadway plans.
All cross sections are looking West.



1" x 9" x 1'-4"



DETAIL A

*Cost included with Concrete Box Culvert.

DESIGNED	PMP
CHECKED	PRL
DRAWN	h.t. duong
CHECKED	PMP/PRL

November 16 2005
 EXAMINED *Thomas J. Damagala*
 ENGINEER OF BRIDGE DESIGN
 PASSED *Ralph E. Curkum*
 ENGINEER OF BRIDGES AND STRUCTURES

**GENERAL DATA &
STAGE CONSTRUCTION DETAILS
F.A.P. RT. 855 SECTION IIB-1
WHITE COUNTY
STATION 283+14.49
STRUCTURE NO. 097-2013**