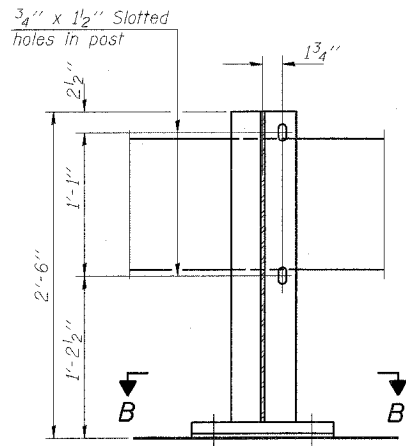
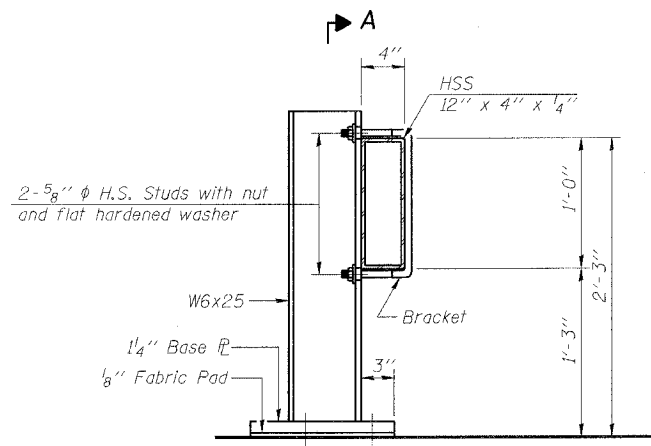


F.A.P. RTE.	SECTION	COUNTY	TOTAL SHEETS	SHEET NO.
855	118-1	WHITE	25	25
STA.		TO STA.		
FED. ROAD DIST. NO.		ILLINOIS FED. AID PROJECT		

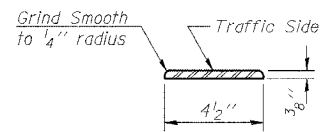
TBR



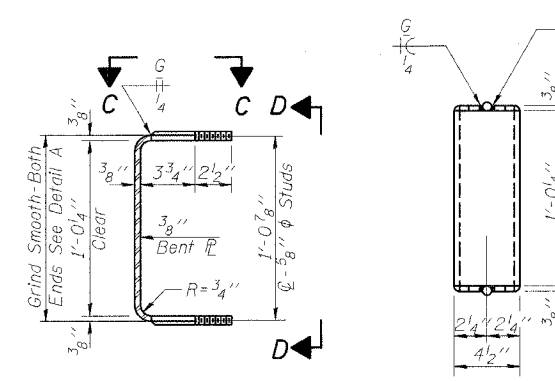
SECTION A-A



SECTION AT RAIL POST

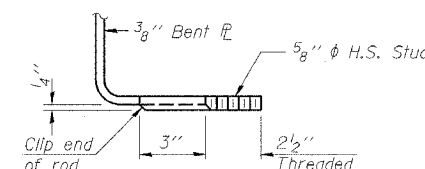


DETAIL A

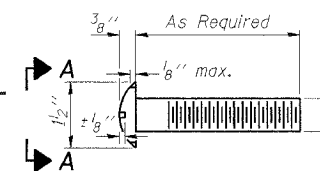


SECTION THRU BRACKET

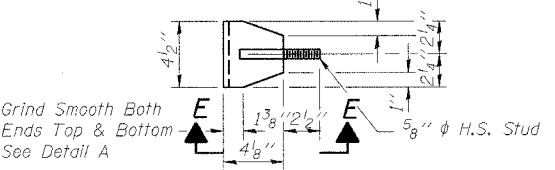
VIEW D-D



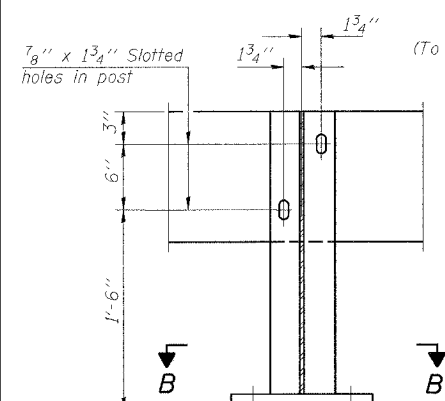
VIEW E-E



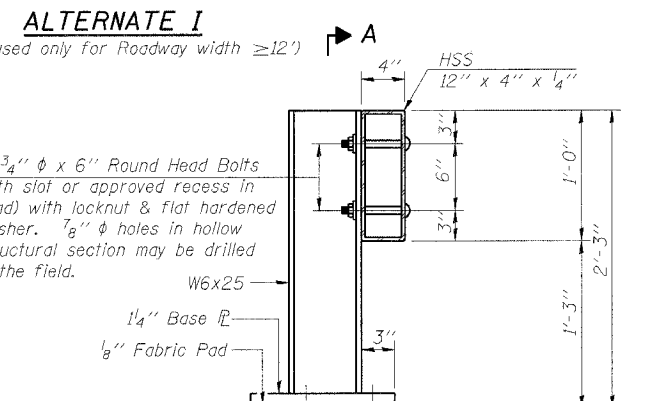
VIEW A-A ROUND HEAD BOLT



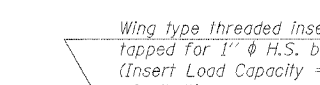
VIEW C-C



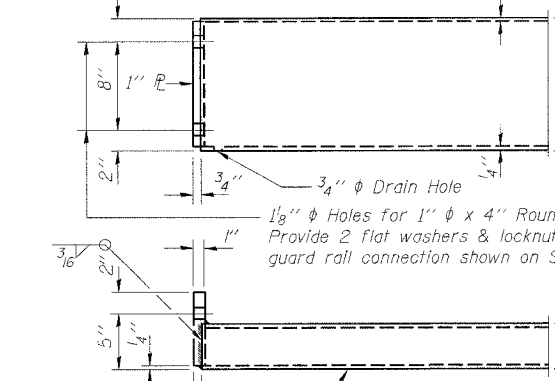
SECTION A-A



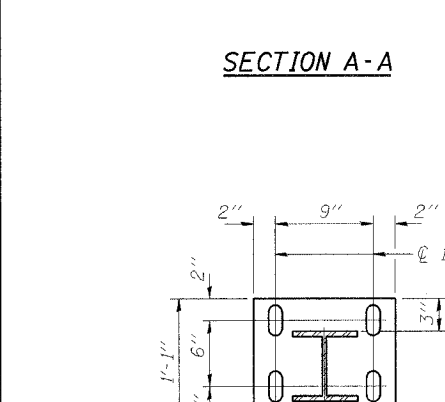
SECTION AT RAIL POST



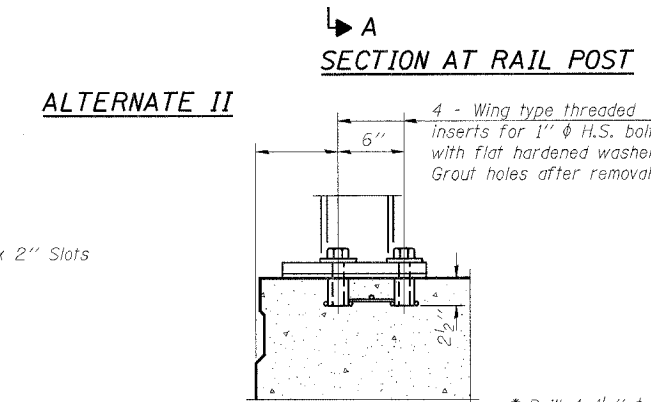
INSERT DETAIL



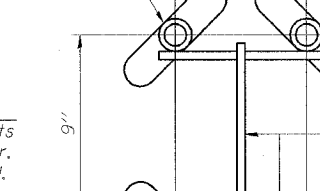
END OF RAIL DETAILS



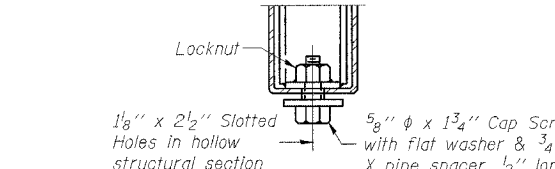
SECTION B-B



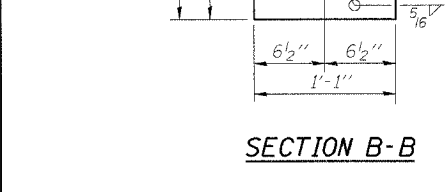
SECTION AT RAIL POST



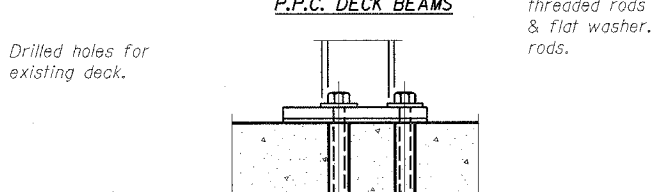
INSERT DETAIL



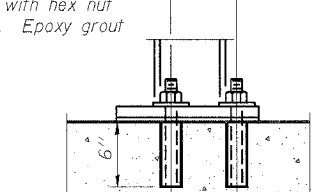
RAIL SPLICE CONNECTION AT EXPANSION JT.



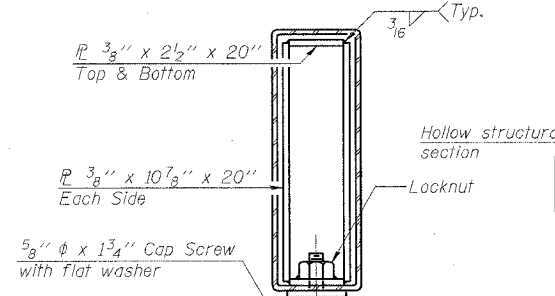
SECTION B-B



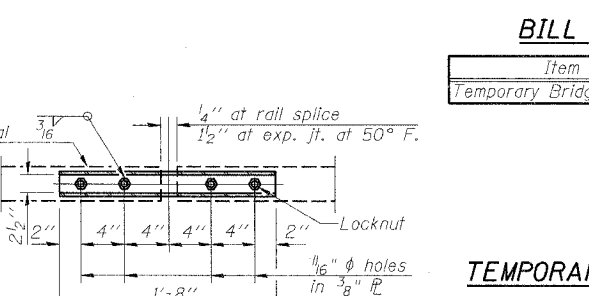
P.P.C. DECK BEAMS



NEW & EXISTING DECKS ANCHORAGE DETAILS



SECTION AT RAIL SPLICE



PLAN-BOTT. SPLICE R TYPICAL

NOTES

Hollow structural sections shall conform to the requirements of ASTM designation A 500 Grade B Structural Steel Tubing.
 All other steel shapes and plates shall conform to the requirements of AASHTO M 270 Grade 36 except posts and brackets shall conform to AASHTO M 270, Grade 50.
 Bolts, cap screws, and nuts shall conform to the requirements of ASTM designation A 307 except for high strength bolts, threaded rods, studs, nuts and washers noted which shall conform to AASHTO M 164.
 The bridge rail shall receive one shop coat of a steel prime point.
 The 1" high strength bolts or threaded rods used to connect the railposts shall be tightened according to Article 505.04(f)(2) of the Standard Specifications.
 Temporary Bridge Rail shall be according to Section 514 of the Standard Specifications, except as noted, and will be paid for at the contract unit price per foot for Temporary Bridge Rail.
 See sheet of for Rail Post spacing.
 The contact surfaces between post flange, rail and inside face of bracket for Alternate I shall be free of all lubricants.
 The nut for 5/8" high strength studs used in Alternate I to connect bracket to post shall be tightened to a snug fit and given an additional one half turn.

BILL OF MATERIAL

Item	Unit	Quantity
Temporary Bridge Rail	Foot	

TEMPORARY BRIDGE RAIL

PLOT DATE: 10/26/2005
 FILE NAME: #FILEL
 PLOT SCALE: #SCALE
 USER NAME: #district