

ROUTE	SECTION	COUNTY	TOTAL SHEETS	SHEET NO.
TR 179	85-09110-01-BR	CLAY	9	1
FED. ROAD DIST. NO. 7 ILLINOIS		FEDERAL AID PROJECT		
CONTRACT NO. 95450				

STATE OF ILLINOIS
DEPARTMENT OF TRANSPORTATION

PLANS FOR PROPOSED FEDERAL - AID BRIDGE REPLACEMENT AND REHABILITATION PROGRAM

TR 179 (QUARTZ LANE)
SECTION 85-09110-01-BR
PROJECT NO. BROS-025(51)
CLAY COUNTY
OVER WET WEATHER CREEK
C-97-004-05

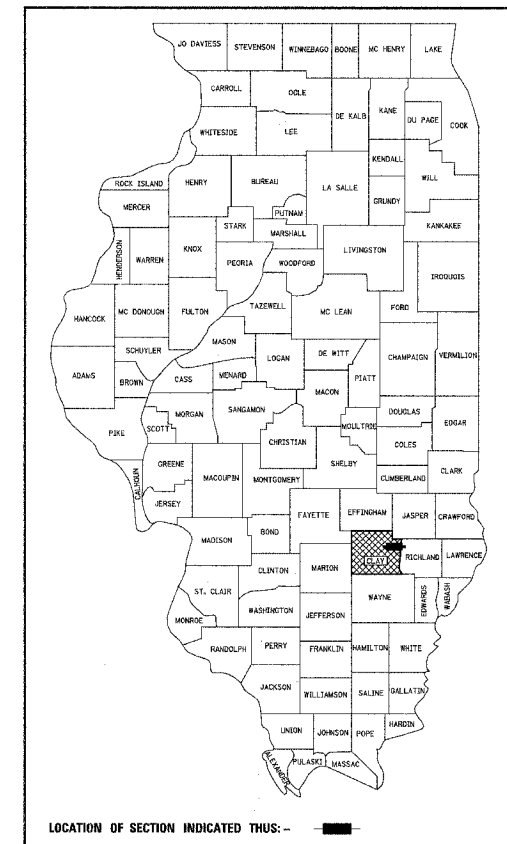
INDEX OF SHEETS

1. COVER SHEET
2. SUMMARY OF QUANTITIES AND TYPICAL SECTIONS
3. PLAN AND PROFILE OF ROADWAY
- 4.-5. CROSS SECTIONS OF ROADWAY
6. GENERAL PLAN AND ELEVATION
7. PRECAST PRESTRESSED CONCRETE DECK BEAM DETAILS
8. STEEL RAILING, TYPE S1 DETAILS
9. ABUTMENT DETAILS

STANDARDS ARE INCLUDED IN PLANS AFTER SHEET NO. 9

000001-04	STANDARD SYMBOLS, ABBREVIATIONS AND PATTERNS
280001-02	TEMPORARY EROSION CONTROL SYSTEMS
515001-02	NAME PLATE FOR BRIDGES
635006-02	REFLECTOR AND TERMINAL MARKER PLACEMENT
702001-05	TRAFFIC CONTROL DEVICES
BLR 21-6	TYPICAL APPLICATION OF TRAFFIC CONTROL DEVICES FOR CONSTRUCTION ON RURAL LOCAL HIGHWAYS

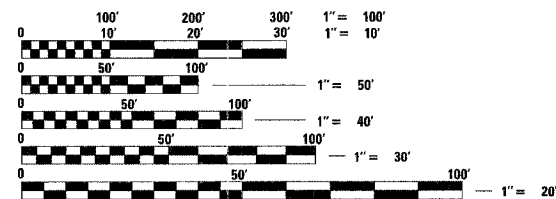
SOIL BORINGS (SEE SPECIFICATIONS)



LOCATION OF SECTION INDICATED THUS: —

DESIGN CLASSIFICATION: LOCAL ROAD (RURAL)

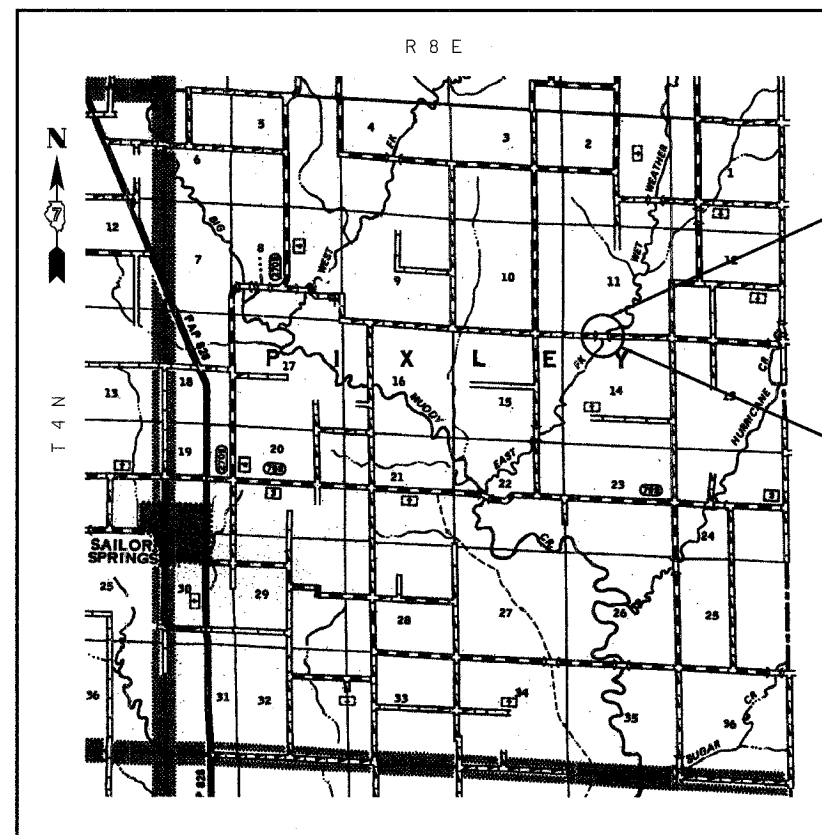
ADT₂₀₀₄ : 100
ADT₂₀₂₄ : 125
DESIGN SPEED - 30 MPH



FULL SIZE PLANS HAVE BEEN PREPARED USING STANDARD ENGINEERING SCALES, REDUCED SIZED PLANS WILL NOT CONFORM TO STANDARD SCALES, IN MAKING MEASUREMENTS ON REDUCED PLANS, THE ABOVE SCALES MAY BE USED.

J.U.L.I.E.
JOINT UTILITY LOCATING INFORMATION FOR EXCAVATORS
1-800-892-0123 Website: <http://www.illinois1call.com>

CONTRACT NUMBER: 95450



SECTION BEGINS
STA. 48+57.96

SECTION 85-09110-01-BR

INCLUDES THE CONSTRUCTION OF A SINGLE SPAN PRECAST PRESTRESSED CONCRETE DECK BEAM BRIDGE CARRYING TR 179 OVER WET WEATHER CREEK, 82'-6" BK. TO BK. ABUTMENTS. NO SKEW. EXISTING STRUCTURE NO. 013-3083 PROPOSED STRUCTURE NO. 013-3194

SECTION ENDS
STA. 52+16.92

LOCATION: NEAR THE NE CORNER, NW 1/4, SECTION 14, T4N, R8E, 3RD P.M.
NET LENGTH OF PROJECT: 358.96 FT = 0.068 MI

APPROVED 10-20, 2005
E.T. Y.
COUNTY ENGINEER

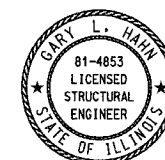
PASSED 11-7, 2005
Maureen Kasel
DISTRICT SEVEN ENGINEER OF LOCAL ROADS & STREETS

RELEASING FOR BID BASED ON LIMITED REVIEW 11/7, 2005
Christine M. Redmond
DEPUTY DIRECTOR OF HIGHWAYS, REGION FOUR ENGINEER

STATE OF ILLINOIS
DEPARTMENT OF TRANSPORTATION



Gary L. Hahn 10-18-05
GARY L. HAHN
CENTRALIA, ILLINOIS
ILLINOIS LICENSED PROFESSIONAL ENGINEER NO. 62-42606
EXPIRES NOV. 30, 2005



Gary L. Hahn 10-18-05
GARY L. HAHN
CENTRALIA, ILLINOIS
ILLINOIS LICENSED STRUCTURAL ENGINEER NO. 81-4853
EXPIRES NOV. 30, 2006