

F.A. RTE.	SECTION	COUNTY	TOTAL SHEETS	SHEET NO.
99-00013-00-HP	JERSEY	15	1	
FED. ROAD DIST. NO. ILLINOIS FED. AID PROJECT				
CONTRACT NO. 97262				

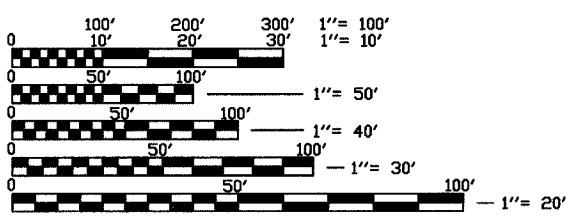
STATE OF ILLINOIS
DEPARTMENT OF TRANSPORTATION
DIVISION OF HIGHWAYS
PLANS FOR PROPOSED
PUBLIC RESTROOM
CITY OF GRAFTON
SCENIC BYWAY PROGRAM
SECTION NO. 99-00013-00-HP
PROJECT NO. SB-IL-99-9805(002)
JERSEY COUNTY
C-98-118-99

INDEX OF SHEETS

1. COVER SHEET
2. G1.0 QUANTITY SHEET
3. A0.0 GENERAL BUILDING SPECIFICATIONS
4. A1.0 COMPOSITE SITE/BUILDING PLAN WITH DOCKS
5. A1.1 ARCHITECTURAL SITE PLAN
6. A1.2 SITE DETAILS
7. A2.0 FLOOR PLAN
8. A2.1 ENLARGED PLAN OF RESTROOM/SHOWER BUILDING AND SCHEDULES
9. A4.0 EXTERIOR ELEVATIONS
10. A4.1 BUILDING SECTION ELEVATION PLAN & DETAILS
11. A5.0 ROOF FRAMING PLAN
12. E1.0 LIGHTING PLAN
13. E1.1 POWER PLAN
14. M1.0 MECHANICAL PLAN
15. P1.0 PLUMBING PLAN

STANDARDS

424001-04
702001-05



FULL SIZE PLANS HAVE BEEN PREPARED USING STANDARD ARCHITECTURAL SCALES, REDUCED SIZED PLANS WILL NOT CONFORM TO STANDARD SCALES, IN MAKING MEASUREMENTS ON REDUCED PLANS, THE ABOVE SCALES MAY BE USED.

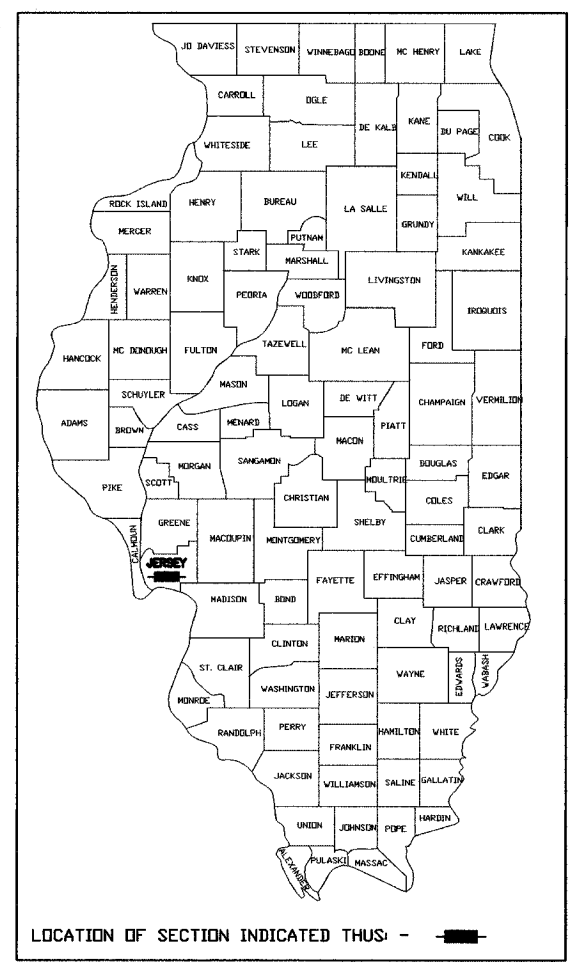
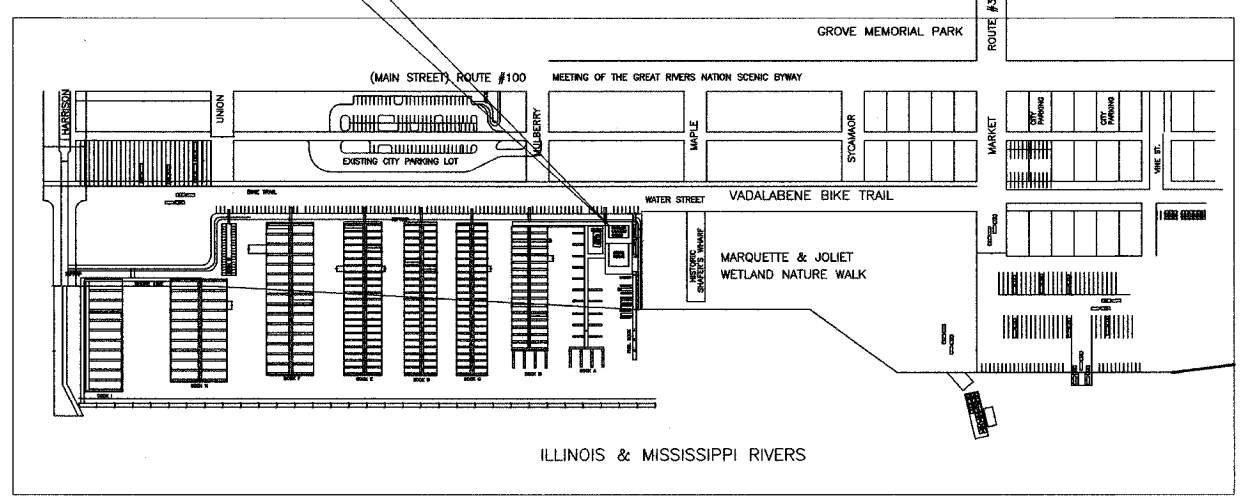
J.U.L.I.E.
JOINT UTILITY LOCATION INFORMATION FOR EXCAVATION
1-800-892-0123

DESIGN DESIGNATION
N/A

CONTRACT NO. 97262

PROJECT LOCATION

SCALES
PLAN 1"=20'
PROFILE HORIZ. 1"=20'
PROFILE VERT. 1"=5'
CROSS SECTIONS 1"=10' HORIZ.
1"=5' VERT.

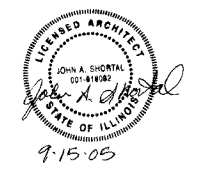


STATE OF ILLINOIS
DEPARTMENT OF TRANSPORTATION
DIVISION OF HIGHWAYS

APPROVED SEPT. 20 2005
John R. Mosby
LOCAL AGENCY OFFICIAL

PASSED Sept 26 2005
Denise Oberthur
LOCAL ROADS AND STREETS ENGINEER

APPROVED 9-26 2005
Mary C. Lamie
MARY C. LAMIE, P.E.
DEPUTY DIRECTOR OF HIGHWAYS
REGION FIVE ENGINEER



LOCATION MAP
SCALE: 1" = 750'
GROSS LENGTH OF PROJECT: N/A
NET LENGTH OF PROJECT: N/A