

**JOHN A. SHORTAL,
ARCHITECT, LTD.**
608 POPULAR STREET
JERSEYVILLE, ILLINOIS 62052
(618) 779-2740

**CITY OF
GRAFTON**
GRAFTON, IL 62037

**GRAFTON HARBOR
MARINA PROJECT
RESTROOM BUILDING**
215 W. WATER STREET
GRAFTON, IL 62037

DATE: 9/1/05
REVISED: 00/00/00
ISSUED: FOR BID
PROJ. NO.: 40001
DRAWN BY: JoS

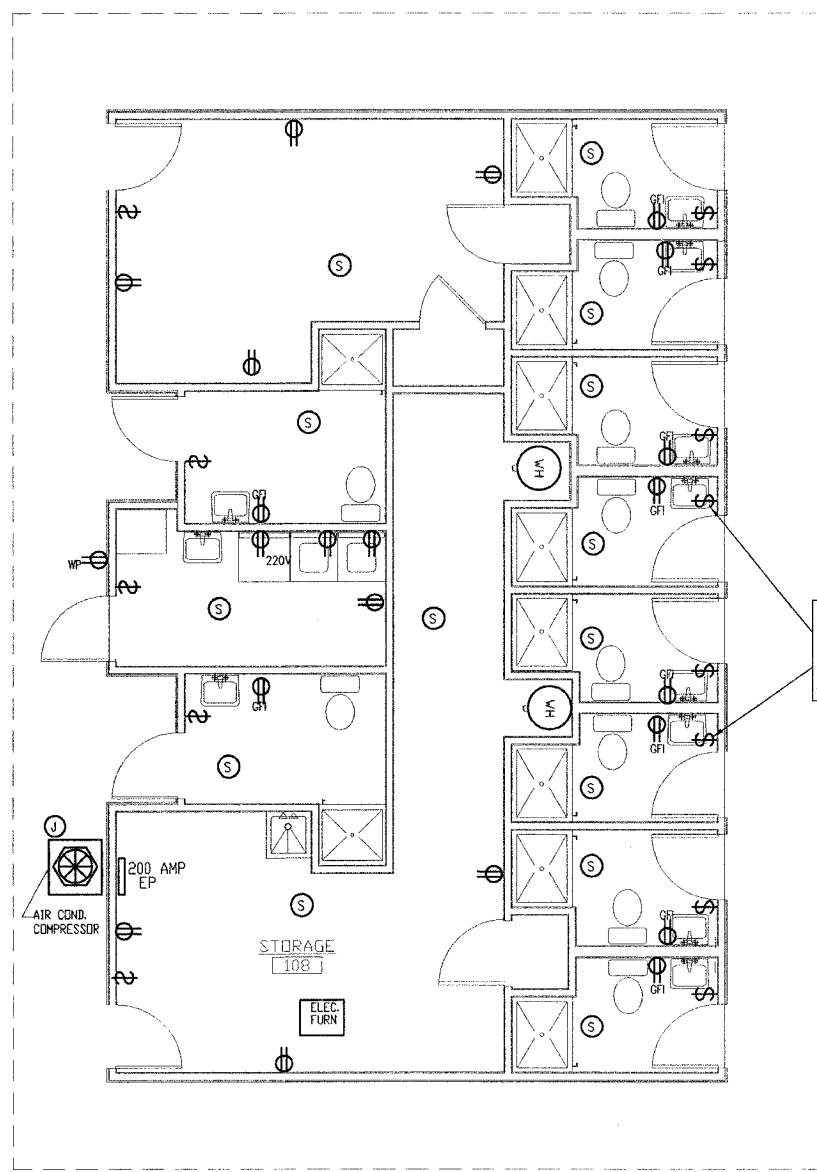
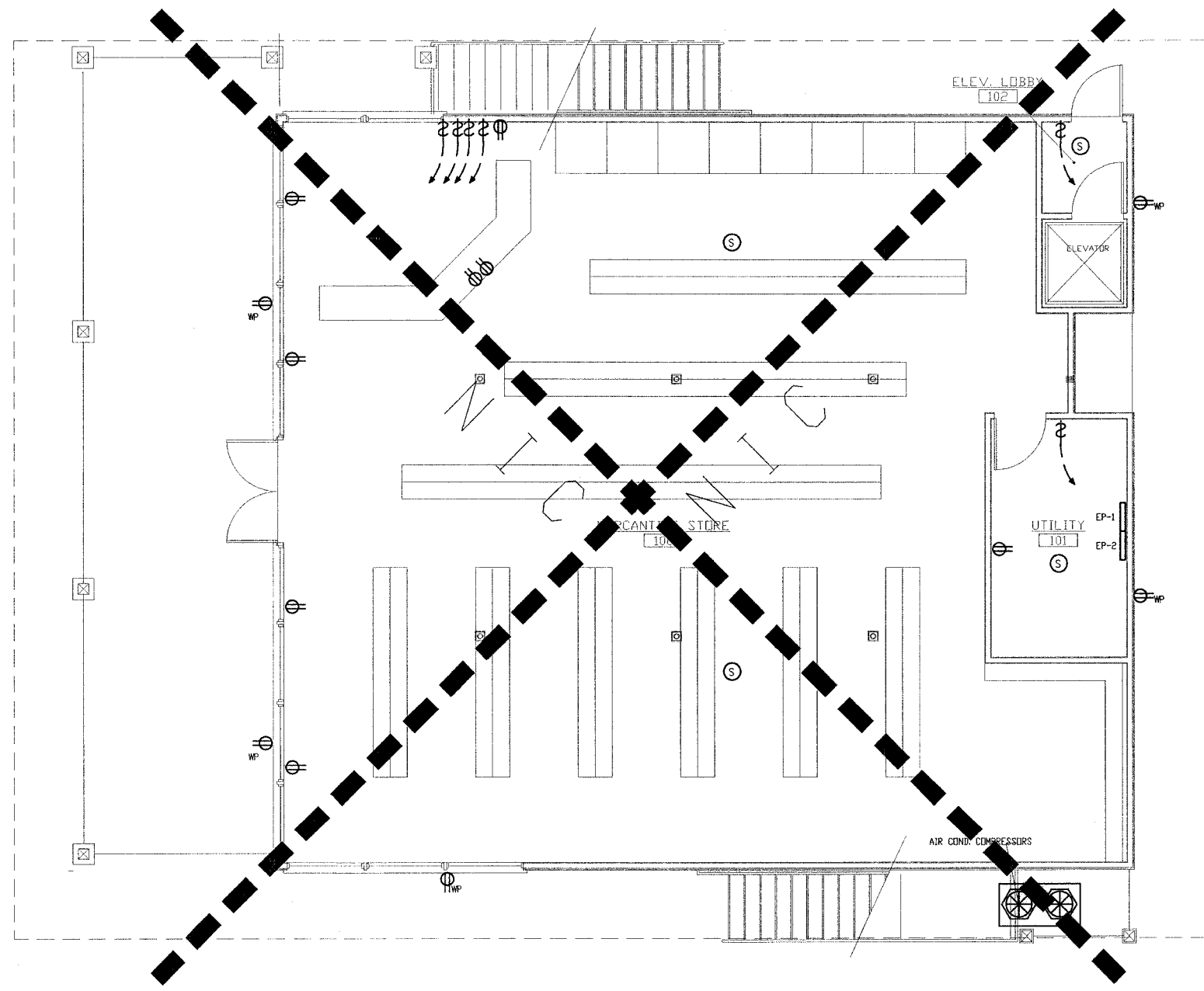
SHEET TITLE
POWER PLAN
(13)

E1.1

LEGEND FOR SYMBOLS

- \$ LIGHT SWITCH
- 3-WAY LIGHT SWITCH
- ⊕ ELECTRIC OUTLET
- 220V 220V RECEPTACLE
- ⊕ DEDICATED 20 AMP CIRCUIT FOR COMPUTER
- GFI GROUND FAULT INTERRUPTER OUTLET
- WP WATER PROOF EXTERIOR GFI
- ⊕ RECESSED FLOOR MTD. DUPLEX RECEPTACLE
- ⊕ QUADRAPLEX ELECTRIC OUTLET
- ▽ 2-LINE TELEPHONE & DATA OUTLET
- ⊙ SMOKE DETECTOR - 110V AC
- ⊙ H HEAT DETECTOR
- ⊙ JUNCTION BOX

ELECTRIC WATER HEATER
2) BRADFORD WHITE VR-250 - OR EQUAL.



① **POWER PLAN**
1/4" = 1'-0"
PLAN NORTH