

F.A. RTE.	SECTION	COUNTY	TOTAL SHEETS	SHEET NO.
99-00013-00-HP	JERSEY	15	1	
FED. ROAD DIST. NO. ILLINOIS FED. AID PROJECT				
CONTRACT NO. 97262				

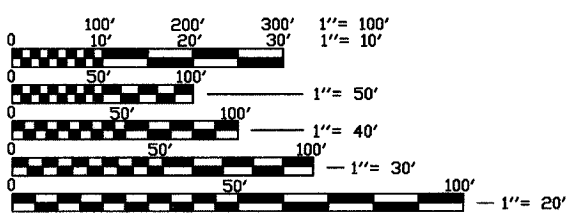
STATE OF ILLINOIS
DEPARTMENT OF TRANSPORTATION
DIVISION OF HIGHWAYS
PLANS FOR PROPOSED
PUBLIC RESTROOM
CITY OF GRAFTON
SCENIC BYWAY PROGRAM
SECTION NO. 99-00013-00-HP
PROJECT NO. SB-IL-99-9805(002)
JERSEY COUNTY
C-98-118-99

INDEX OF SHEETS

1. COVER SHEET
2. G1.0 QUANTITY SHEET
3. A0.0 GENERAL BUILDING SPECIFICATIONS
4. A1.0 COMPOSITE SITE/BUILDING PLAN WITH DOCKS
5. A1.1 ARCHITECTURAL SITE PLAN
6. A1.2 SITE DETAILS
7. A2.0 FLOOR PLAN
8. A2.1 ENLARGED PLAN OF RESTROOM/SHOWER BUILDING AND SCHEDULES
9. A4.0 EXTERIOR ELEVATIONS
10. A4.1 BUILDING SECTION ELEVATION PLAN & DETAILS
11. A5.0 ROOF FRAMING PLAN
12. E1.0 LIGHTING PLAN
13. E1.1 POWER PLAN
14. M1.0 MECHANICAL PLAN
15. P1.0 PLUMBING PLAN

STANDARDS

424001-04
702001-05



FULL SIZE PLANS HAVE BEEN PREPARED USING STANDARD ARCHITECTURAL SCALES, REDUCED SIZED PLANS WILL NOT CONFORM TO STANDARD SCALES, IN MAKING MEASUREMENTS ON REDUCED PLANS, THE ABOVE SCALES MAY BE USED.

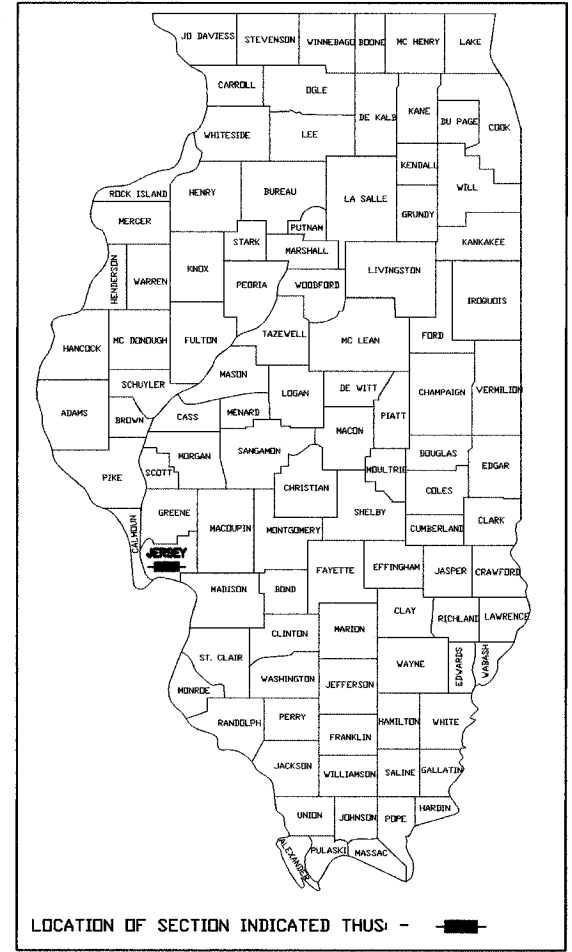
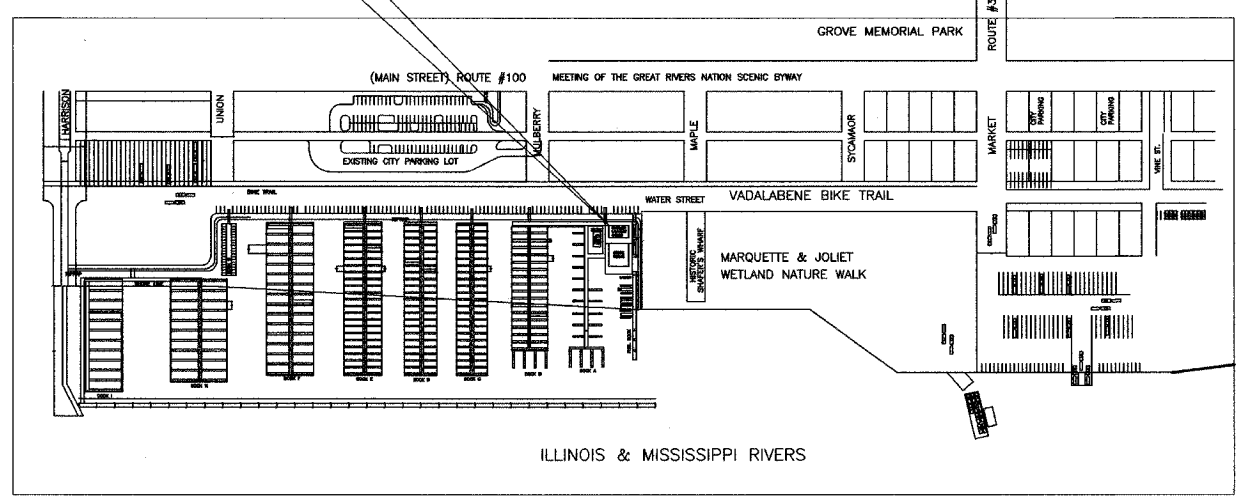
J.U.L.I.E.
JOINT UTILITY LOCATION INFORMATION FOR EXCAVATION
1-800-892-0123

DESIGN DESIGNATION
N/A

CONTRACT NO. 97262

PROJECT LOCATION

SCALES
PLAN 1"=20'
PROFILE HORIZ. 1"=20'
PROFILE VERT. 1"=5'
CROSS SECTIONS 1"=10' HORIZ.
1"=5' VERT.

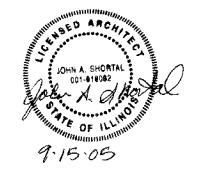


STATE OF ILLINOIS
DEPARTMENT OF TRANSPORTATION
DIVISION OF HIGHWAYS

APPROVED SEPT. 20 2005
John R. Mosby
LOCAL AGENCY OFFICIAL

PASSED Sept 26 2005
Denise Oberthur
LOCAL ROADS AND STREETS ENGINEER

APPROVED 9-26 2005
Mary C. Lamie
MARY C. LAMIE, P.E.
DEPUTY DIRECTOR OF HIGHWAYS
REGION FIVE ENGINEER



LOCATION MAP
SCALE: 1" = 750'
GROSS LENGTH OF PROJECT: N/A
NET LENGTH OF PROJECT: N/A

JOHN A. SHORTAL,
ARCHITECT, LTD.
608 POPLAR STREET
JERSEYVILLE, ILLINOIS 62052
(618) 779-2740

**CITY OF
GRAFTON**
GRAFTON, IL 62037

GRAFTON HARBOR
MARINA PROJECT
RESTROOM BUILDING
215 W. WATER STREET
GRAFTON, IL 62037

DATE: 9/1/05

REVISED: 00/00/00

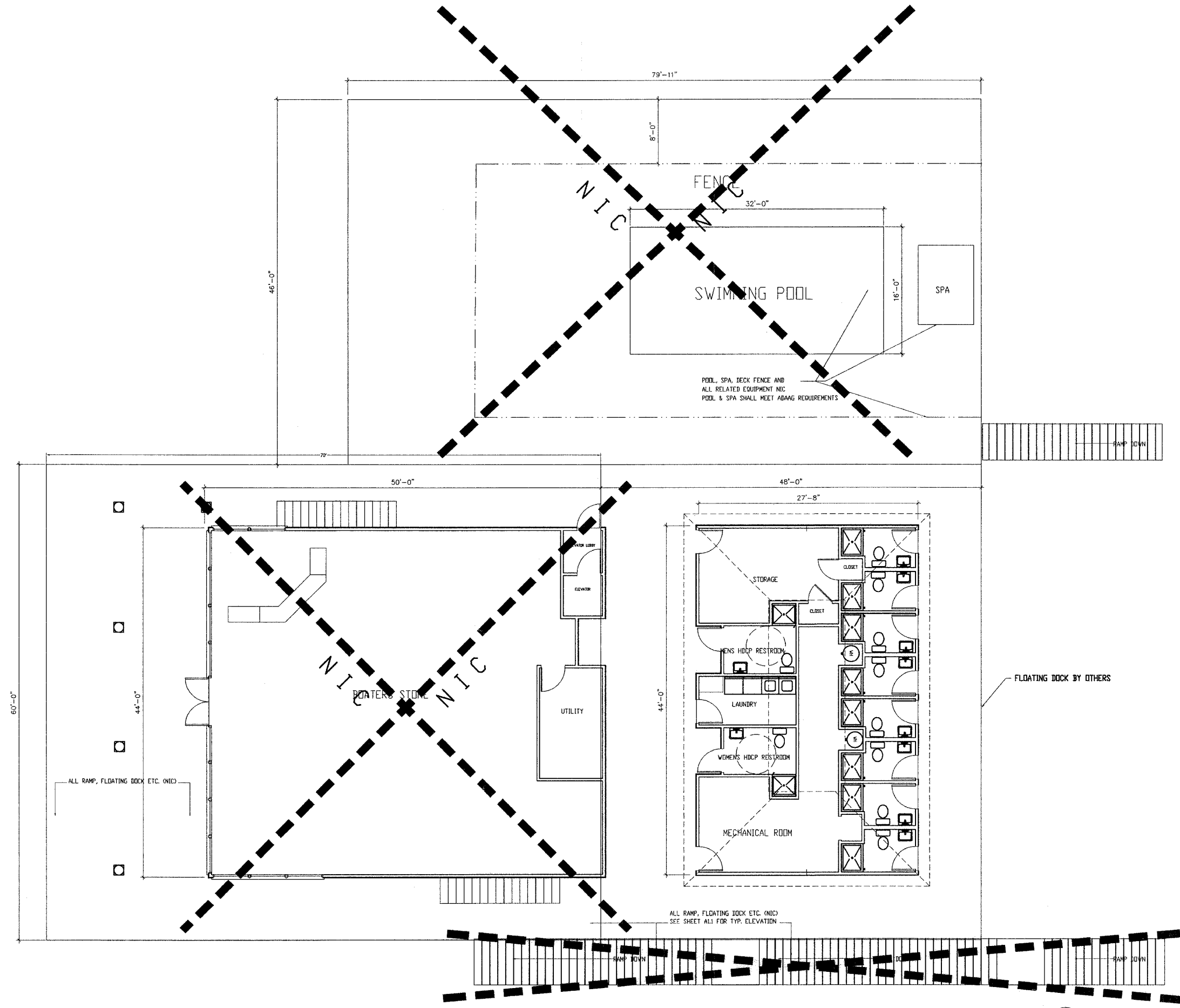
ISSUED: FOR BID

PROJ. NO.: 40001

DRAWN BY: JaS

SHEET TITLE
COMPOSITE SITE
/BUIDING PLAN
WITH DOCKS
(4)

A1.0



① COMPOSITE PLAN
3/16" = 1'-0"
PLAN NORTH

GANGWAY, FLOATING PIER AND DEDICATED BOAT SLIPS PER ADAAG 4.8 MUST BE ADA COMPLIANT AND MUST BE ON AN ACCESSIBLE ROUTE. DESIGN OF GANGWAY BY OTHERS: ENSURE THAT THE SLOPE DOES NOT EXCEED 1:12. RAMP SLOPES BETWEEN 1:16 AND 1:20 ARE PREFERRED. TRANSITION BETWEEN PARKING LOT AND GANGWAY SHALL BE COMPLIANT.

Accessible boat slips are not "reserved" for persons with disabilities in the same manner as accessible vehicle parking spaces. Rather, accessible boat slip use is comparable to accessible hotel rooms. The Department of Justice is responsible for addressing operational issues relating to the use of accessible facilities and elements. The Department of Justice currently advises that hotels should hold accessible rooms for persons with disabilities until all other rooms are filled. At that point, accessible rooms can be open for general use on a first come, first serve basis. It is advised that these boat slips be operated and managed in this same manner.

Under ADAAG, an accessible route must serve the last float because it would function as the boarding pier at the lowest water level. Under exception 3 in 15.2.4, each float is not required to comply with ADAAG 4.8, (handrails) but must meet all other requirements in ADAAG 4.3, (accessible route) unless exempted by exception 1 in 15.2.4, (boarding piers). In this example, because the entire chain also functions as a boarding pier, the entire chain must comply with the requirements of 15.2.5 (accessible boat slips), including the 60-inch minimum clear pier width provision.

Accessible boat slips are served by clear pier space 60 inches wide minimum and at least as long as the accessible boat slips. Every 10 feet maximum of linear pier edge serving the accessible boat slips contains at least one continuous clear opening 60 inches minimum wide.

The boat slips are required to be accessible and are provided at a floating pier. The vertical distance an accessible route must travel to the pier when the water is at its lowest level is six feet, although the water level only fluctuates three feet.

F.A. RITE	SECTION	COUNTY	TOTAL SHEETS	SHEET NO.
99-00013-00-HP	JERSEY	ILLINOIS	15	5
FED. ROAD DIST. NO. ILLINOIS FED. AID PROJECT				
CONTRACT NO. 97262				

JOHN A. SHORTAL,
ARCHITECT, LTD.
608 POPULAR STREET
JERSEYVILLE, ILLINOIS 62052
(618) 779-2740

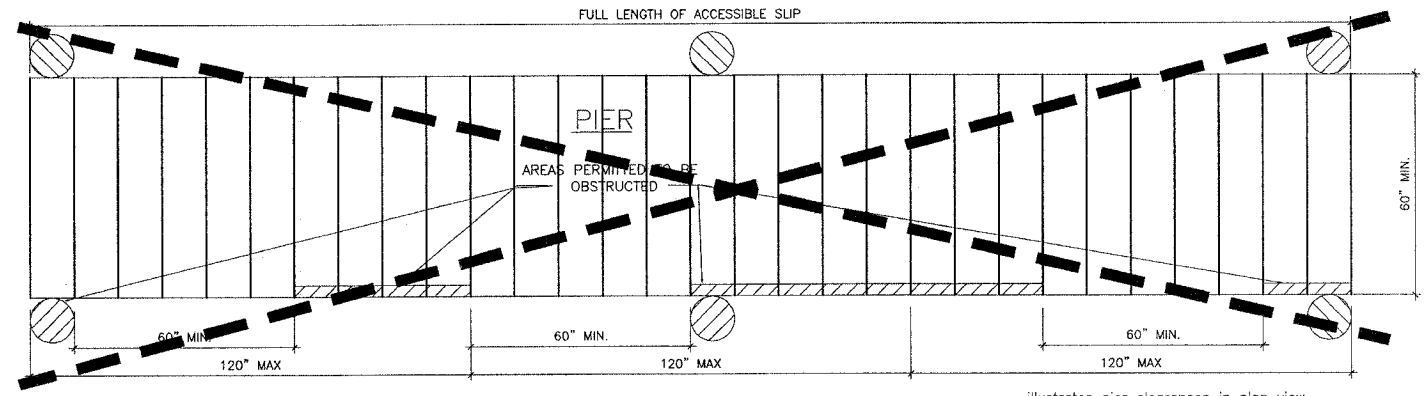
CITY OF
GRAFTON
GRAFTON, IL 62037

GRAFTON HARBOR
MARINA PROJECT
RESTROOM BUILDING
215 W. WATER STREET
GRAFTON, IL 62037

DATE:	9/1/05
REVISED:	00/00/00
ISSUED:	FOR BID
PROJ. NO.:	40001
DRAWN BY:	JaS

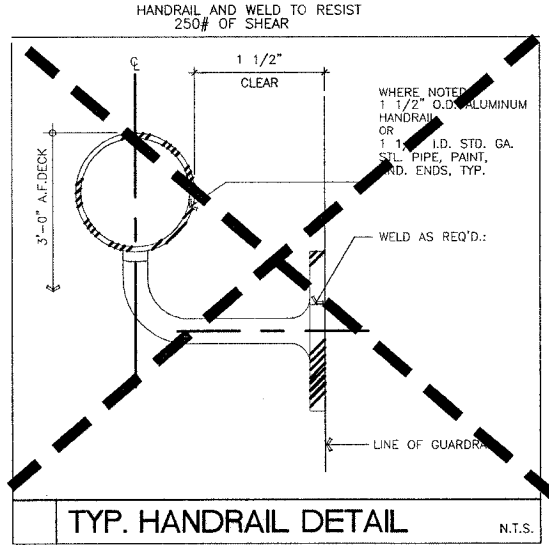
SHEET TITLE
ARCHITECTURAL
SITE PLAN
(5)

A1.1

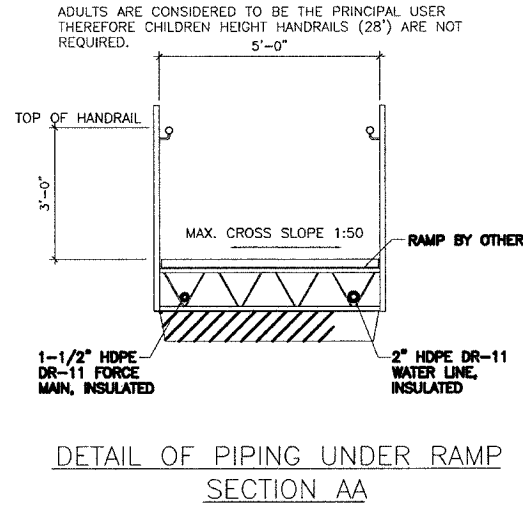


PIER CLEARANCES IN PLAN VIEW

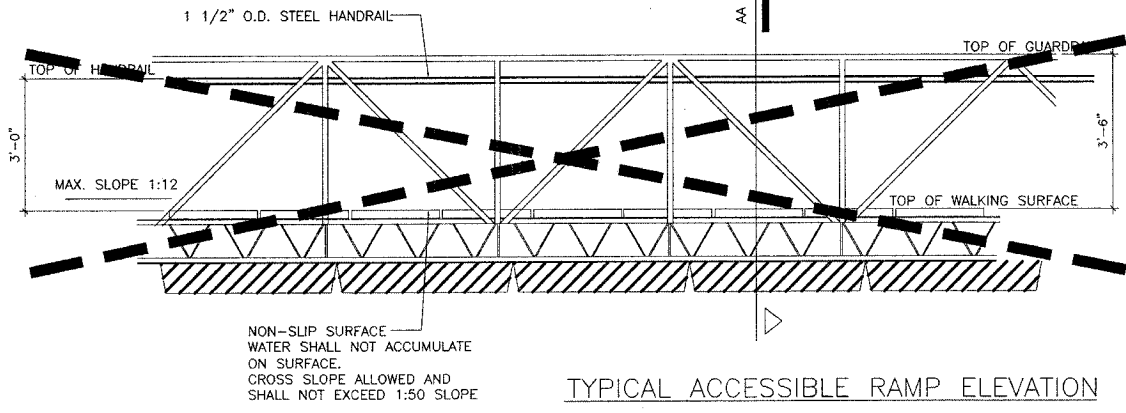
illustrates pier clearances in plan view. Accessible boat slips are served by clear pier space 60 inches wide minimum and at least as long as the accessible boat slips. Every 10 feet maximum of linear pier edge serving the accessible boat slips contains at least one continuous clear opening 60 inches minimum wide.



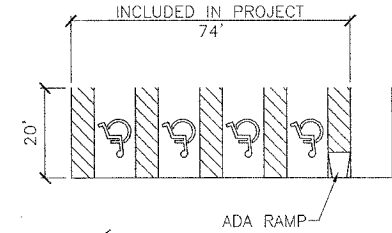
TYP. HANDRAIL DETAIL



DETAIL OF PIPING UNDER RAMP SECTION AA



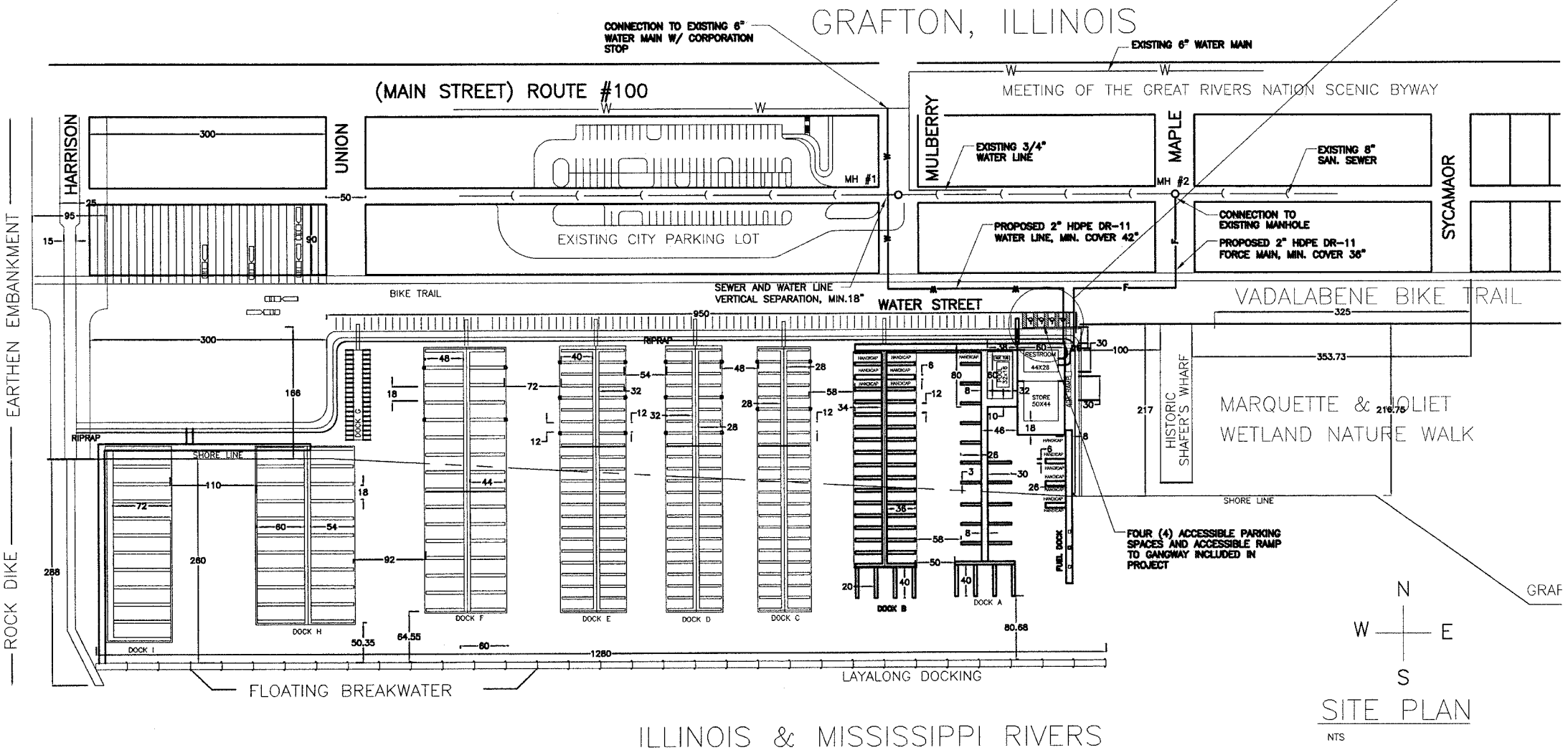
TYPICAL ACCESSIBLE RAMP ELEVATION



ADA RAMP

DOCK 'A'	18 - 35'	UNCOVERED
DOCK 'B'	32 - 35'	UNCOVERED
DOCK 'C'	24 - 26'	UNCOVERED
DOCK 'D'	14 - 24'	COVERED
DOCK 'E'	14 - 28'	COVERED
DOCK 'F'	13 - 32'	COVERED
DOCK 'G'	13 - 40'	COVERED
DOCK 'H'	24 - 48'	COVERED
DOCK 'I'	18 - 60'	COVERED
DOCK 'J'	9 - 72'	COVERED

177
14 ADA COMPLIANT SLIP SPACES



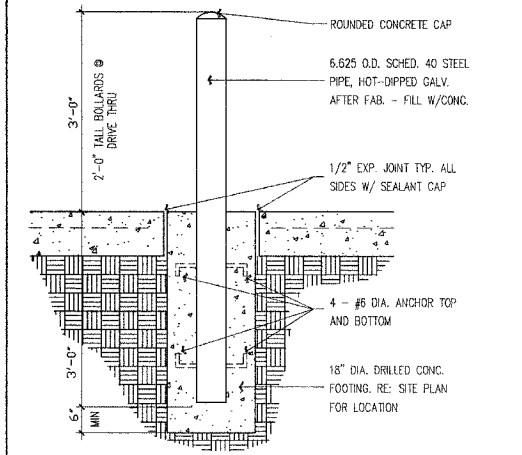
SITE PLAN

ILLINOIS & MISSISSIPPI RIVERS

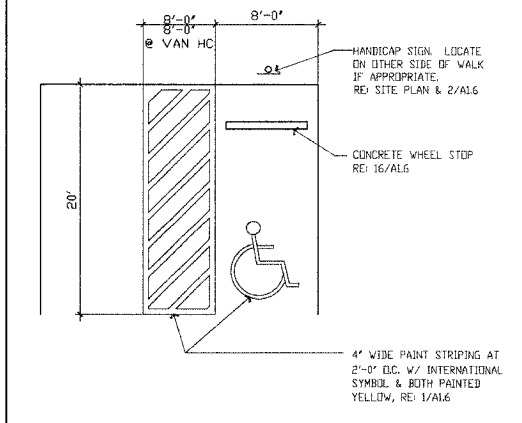
JOHN A. SHORTAL,
ARCHITECT, LTD.
608 POPLAR STREET
JERSEYVILLE, ILLINOIS 62052
(618) 779-2740

CITY OF GRAFTON
GRAFTON, IL 62037

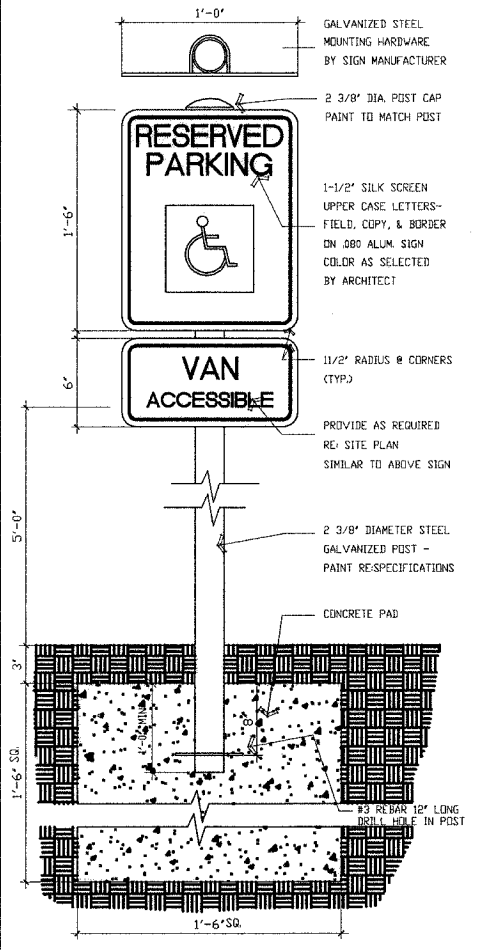
GRAFTON HARBOR
MARINA PROJECT
RESTROOM BUILDING
215 W. WATER STREET
GRAFTON, IL 62037



11 BOLLARD N.T.S.



7 HANDICAP PARKING N.T.S.

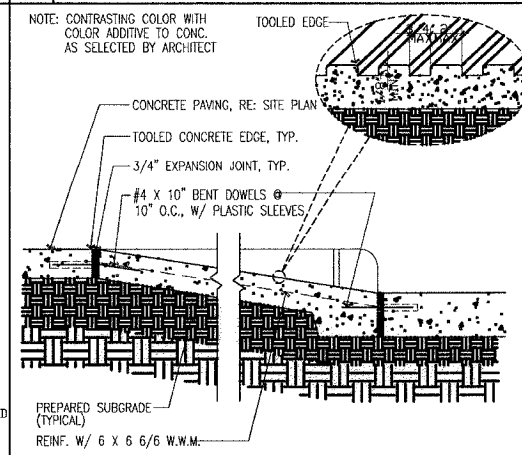


2 HANDICAP SIGN N.T.S.

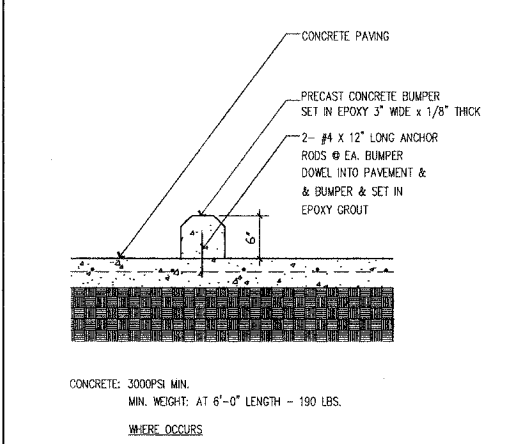
AREA	CONCRETE THICKNESS	COMMENTS
SIDEWALKS AND ENTRY WALKS	4"	6 X 6 #6 W.W.M. FLAT (NOT ROLLED)
PARKING AREA	6" SURFACE	8" AGGREGATE BASE

NOTE: SAND FILL WILL NOT BE ALLOWED AS A SUBGRADE MATERIAL BELOW VEHICULAR (AUTO, PARKING,) PAVING.

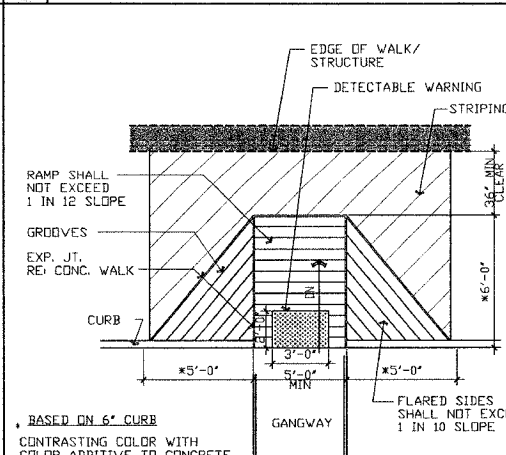
8 PAVING + WALK SCHEDULE



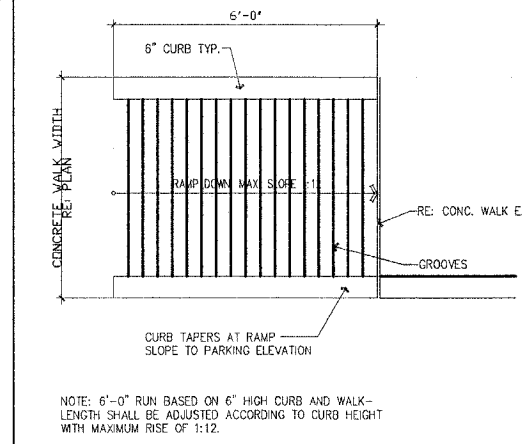
3 ACCESSIBLE RAMP 1" = 1'-0"



9 CONC. WHEEL STOP 1" = 1'-0"



4 ACCESSIBLE RAMP 1/4" = 1'-0"



10 ACCESSIBLE RAMP PLAN 1/2" = 1'-0"

1 HANDICAP STRIPING 1" = 1'-0"

DATE: 9/1/05
REVISED: 00/00/00
ISSUED: FOR BID
PROJ. NO.: 40001
DRAWN BY: JoS

SHEET TITLE
SITE DETAILS
(6)

A1.2

JOHN A. SHORTAL,
ARCHITECT, LTD.
608 POPLAR STREET
JERSEYVILLE, ILLINOIS 62052
(618) 779-2740

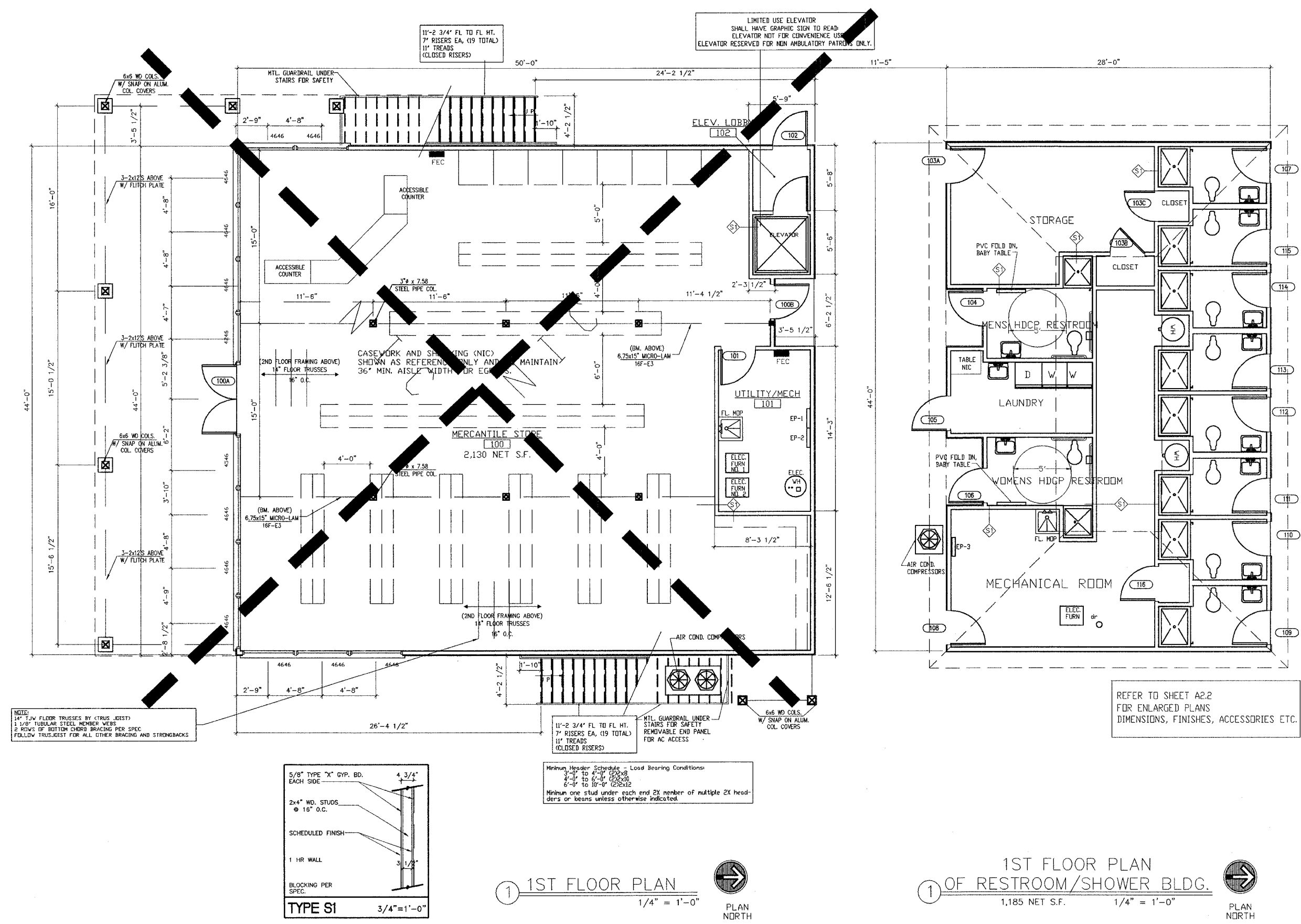
CITY OF GRAFTON
GRAFTON, IL 62037

GRAFTON HARBOR
MARINA PROJECT
RESTROOM BUILDING
215 W. WATER STREET
GRAFTON, IL 62037

DATE: 9/1/05
REVISED: 00/00/00
ISSUED: FOR BID
PROJ. NO.: 40001
DRAWN BY: JaS

SHEET TITLE
FLOOR PLAN
(7)

A2.0



JOHN A. SHORTAL,
 ARCHITECT, LTD.
 608 POPLAR STREET
 JERSEYVILLE, ILLINOIS 62052
 (618) 779-2740

CITY OF
GRAFTON
 GRAFTON, IL 62037

GRAFTON HARBOR
 MARINA PROJECT
 RESTROOM BUILDING
 215 W. WATER STREET
 GRAFTON, IL 62037

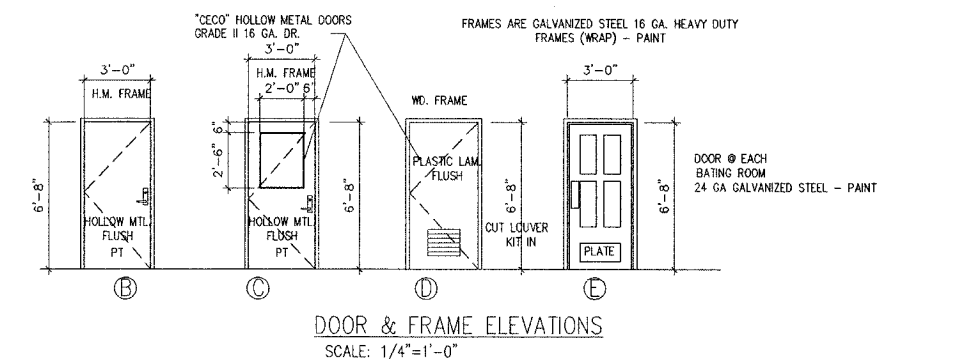
DATE: 9/1/05
 REVISED: 00/00/00
 ISSUED: FOR BID
 PROJ. NO.: 40001
 DRAWN BY: JoS

SHEET TITLE
 ENLARGED PLAN
 OF RESTROOM/SHOWER
 BUILDING AND SCHEDULES
 (8)

A2.1

ROOM FINISH SCHEDULE														REMARKS
ROOM NO.	FLOOR	BASE				WALLS				CEILING		HEIGHT	MAT.	
		NORTH	SOUTH	EAST	WEST	NORTH	SOUTH	EAST	WEST	PT	PT			
103A	VCT	VB	VB	VB	VB	G.B.	PT	G.B.	PT	G.B.	PT	9'-0"	G.B.	
103B	VCT	VB	VB	VB	VB	G.B.	PT	G.B.	PT	G.B.	PT	9'-0"	G.B.	
103C	VCT	VB	VB	VB	VB	G.B.	PT	G.B.	PT	G.B.	PT	9'-0"	G.B.	
104	VCT	VB	VB	VB	VB	FRP	FRP	FRP	FRP	FRP	FRP	9'-0"	G.B.	
105	VCT	VB	VB	VB	VB	G.B.	PT	G.B.	PT	G.B.	PT	9'-0"	G.B.	
106	VCT	VB	VB	VB	VB	FRP	FRP	FRP	FRP	FRP	FRP	9'-0"	G.B.	
107	VCT	VB	VB	VB	VB	FRP	FRP	FRP	FRP	FRP	FRP	9'-0"	G.B.	
108A	VCT	VB	VB	VB	VB	G.B.	PT	G.B.	PT	G.B.	PT	9'-0"	G.B.	
108B	VCT	VB	VB	VB	VB	G.B.	PT	G.B.	PT	G.B.	PT	9'-0"	G.B.	
109	VCT	VB	VB	VB	VB	FRP	FRP	FRP	FRP	FRP	FRP	9'-0"	G.B.	
110	VCT	VB	VB	VB	VB	FRP	FRP	FRP	FRP	FRP	FRP	9'-0"	G.B.	
111	VCT	VB	VB	VB	VB	FRP	FRP	FRP	FRP	FRP	FRP	9'-0"	G.B.	
112	VCT	VB	VB	VB	VB	FRP	FRP	FRP	FRP	FRP	FRP	9'-0"	G.B.	
113	VCT	VB	VB	VB	VB	FRP	FRP	FRP	FRP	FRP	FRP	9'-0"	G.B.	
114	VCT	VB	VB	VB	VB	FRP	FRP	FRP	FRP	FRP	FRP	9'-0"	G.B.	
115	VCT	VB	VB	VB	VB	FRP	FRP	FRP	FRP	FRP	FRP	9'-0"	G.B.	

LEGEND:
 VB = 4" VINYL BASE
 G.B. = GYPSUM BO. 5/8"
 FRP = "MARLITE" FIBERGLASS REINFORCED PANELS
 VCT = VINYL COMPOSITION TILE (1/8")
 S/V = STAINED AND VARNISH
 PT = PAINT
 PT/VCT = PAINT AND VINYL WALL COVERING
 PLY/MD = 5/8" CDX PLYWOOD FOR MOUNTING



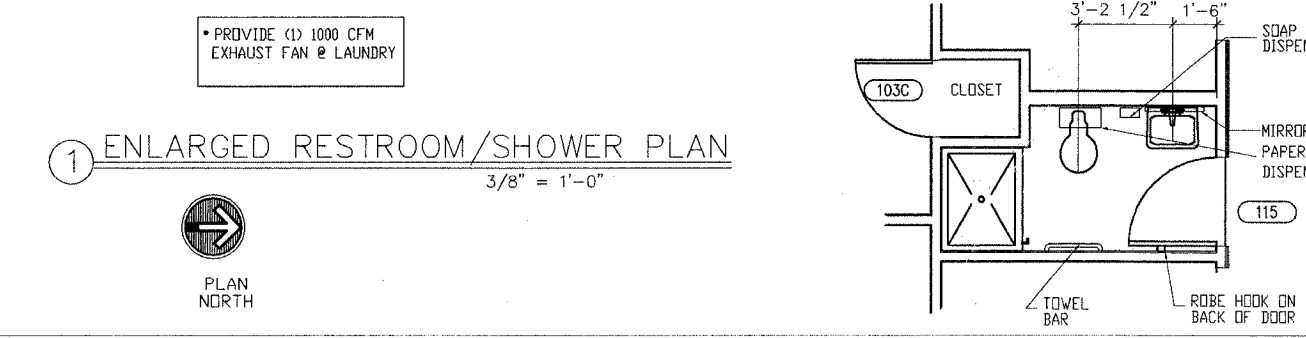
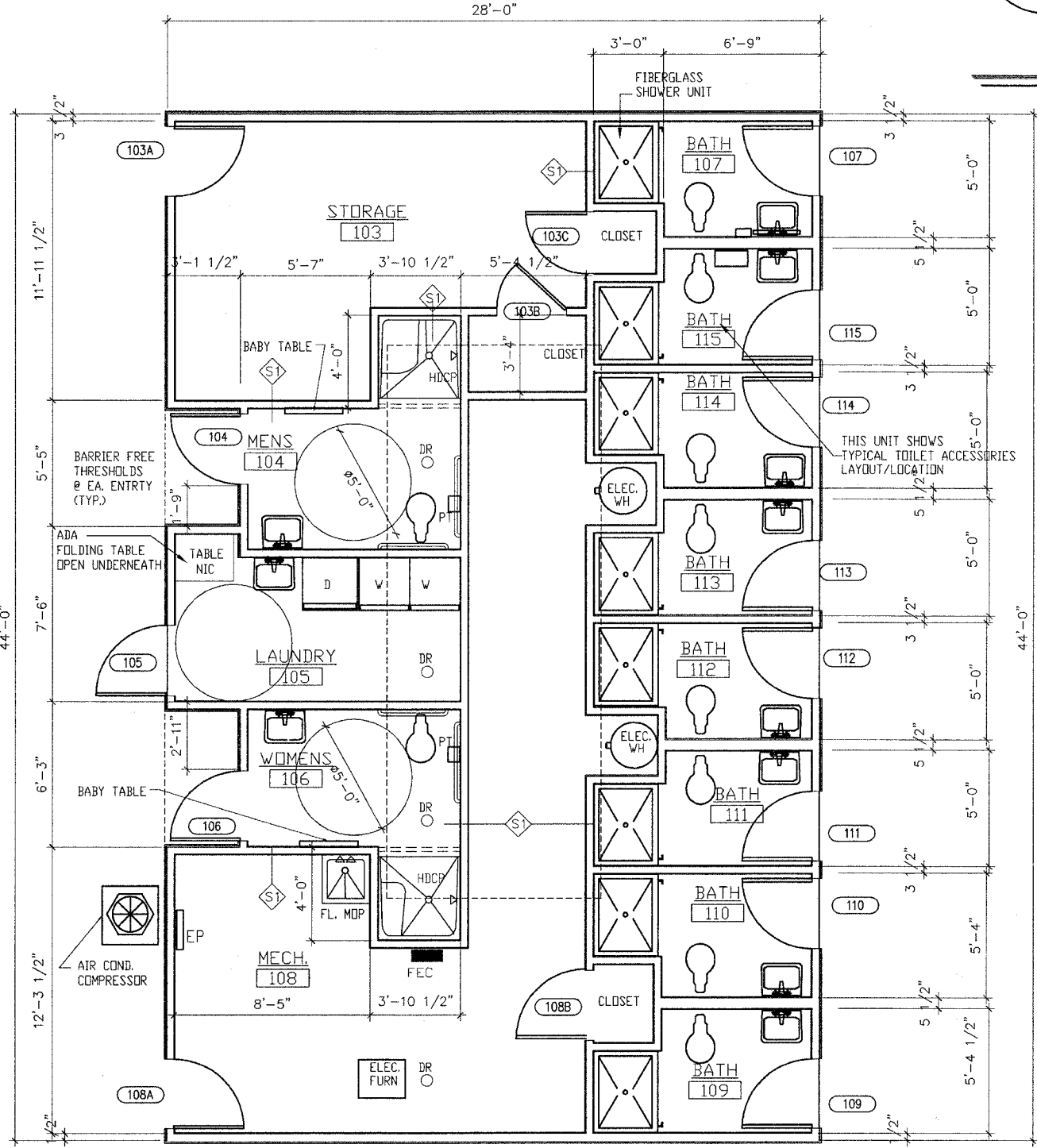
DOOR SCHEDULE										
DOOR OR ROOM NO.	SIZE	DR. MAT.	DR. FINISH	FRAME MAT.	FRAME FINISH	TYPE	LABEL	REMARKS		
		DOORS #100, 101, 102, ARE PART OF THE BOATHOUSE PROJECT.								
103A	3'-0" x 7'-0"	1 3/4"	HM	PT	HM	PT	B	NO CLOSURE		
103B	3'-0" x 7'-0"	1 3/4"	HPL	-	WD	ST	D	NO CLOSURE		
103C	3'-0" x 7'-0"	1 3/4"	HPL	-	WD	ST	D	NO CLOSURE		
104	3'-0" x 6'-8"	1 3/4"	S	PT	HM	PT	E			
105	3'-0" x 7'-0"	1 3/4"	HM	PT	HM	PT	C			
106	3'-0" x 6'-8"	1 3/4"	S	PT	HM	PT	E			
107	3'-0" x 6'-8"	1 3/4"	S	PT	HM	PT	E			
108A	3'-0" x 7'-0"	1 3/4"	HM	PT	HM	PT	B	NO CLOSURE		
108B	3'-0" x 7'-0"	1 3/4"	HPL	-	WD	ST	D	NO CLOSURE		
109	3'-0" x 6'-8"	1 3/4"	S	PT	HM	PT	E			
110	3'-0" x 6'-8"	1 3/4"	S	PT	HM	PT	E			
111	3'-0" x 6'-8"	1 3/4"	S	PT	HM	PT	E			
112	3'-0" x 6'-8"	1 3/4"	S	PT	HM	PT	E			
113	3'-0" x 6'-8"	1 3/4"	S	PT	HM	PT	E			
114	3'-0" x 6'-8"	1 3/4"	S	PT	HM	PT	E			
115	3'-0" x 6'-8"	1 3/4"	S	PT	HM	PT	E			

NOTE: 1. PROVIDE BARRIER-FREE THRESHOLD @ ALL ENTRY & EXIT DOORS.
 2. ALL DOORS TO HAVE LEVER TYPE HARDWARE.
 3. ALL DOORS SHALL HAVE CLOSURES UNLESS NOTED OTHERWISE.
 4. ALL DOORS TO BATH HOUSE TO HAVE STAINLESS STEEL HINGES.

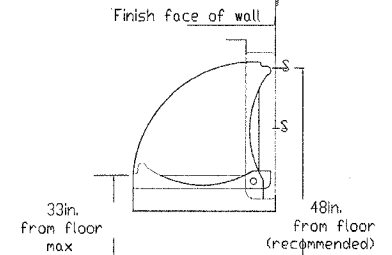
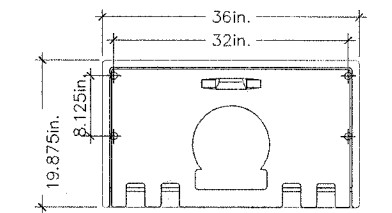
LEGEND: S = STEEL
 AL = ALUMINUM
 C/A = CLEAR ANODIZED
 HPL = HIGH PRESSURE LAMINATES
 WOOD GRAIN
 A/L = ALUMINUM & GLASS
 W/F = WOODEN FRAME
 HM = HOLLOW METAL
 PT = PAINT
 ST = STAIN

- PROVIDE HARDWARE FOR TYPICAL OFFICE ENTRY:
 3 EA. HINGE 4 1/2" x 4 1/2" BUTTS BB1279 "HAGER"
 1 EA. PRIVACY LOCK T301 Q "FALCON"
 1 EA. FLOOR STOP WS401CCV "IVES"
 1 EA. DOOR SILENCER SRG4 - GRAY "IVES"
- PROVIDE HARDWARE FOR TYP. STORAGE/MECHANICAL ROOM:
 3 EA. HINGE 4 1/2" x 4 1/2" BUTTS BB1279 "HAGER"
 1 EA. STOREROOM LOCK T581 Q X C607 F2 "FALCON"
 1 EA. SURFACE CLOSURE 4010 SERIES LCN "IVES"
 1 EA. KICK PLATE B400 12 X 1 1/2 LDW "IVES"
 1 EA. FLOOR STOP WS401CCV "IVES"
 1 EA. SMOKE GASKET S88B17 "PEMKO"
- PROVIDE HARDWARE FOR TYP. BATHING /SHOWER ROOM:
 3 EA. HINGE 4 1/2" x 4 1/2" BUTTS BB1279 "HAGER"
 1 EA. PRIVACY LOCK (THUMB TURN OR PUSH BUTTON) AND KEVED ENT
 1 EA. PULL HANDLE FOR EXIT.
 1 EA. PUSH PLATE FOR ENTRY
 1 EA. SURFACE CLOSURE 4010 SERIES LCN (NON HOLD OPEN)
 1 EA. KICK PLATE B400 12 X 1 1/2 LDW "IVES"
 1 EA. FLOOR STOP WS401CCV "IVES"
- PROVIDE HARDWARE FOR LAUNDRY
 3 EA. HINGE 4 1/2" x 4 1/2" BUTTS BB1279 "HAGER"
 1 EA. STOREROOM LOCK T581 Q X C607 F2 "FALCON"
 1 EA. PULL HANDLE FOR EXIT.
 1 EA. PUSH PLATE FOR ENTRY.

- REFER TO SPEC FOR TOILET ACCESSORIES
 ALL ROOMS HAVE VCT FLOOR TILE
 AND 6" VINYL BASE
- "MARLITE" FRP WALL PANELS AT ALL WALLS
 ALL WALLS OF EACH SHOWER ROOM TO HAVE M.R. GYP. BD.
 SOUND BATTS @ ALL DEMISING PARTITIONS
- BABY CHANGING STATION IN EACH HANDICAP RESTROOM (2)
 PROVIDE (2) "KDALA" HORIZONTAL STATIONS
 MODEL# KB 100-00 CREAM
- REFER TO SPEC PLO FOR FIXTURE SCHEDULE ACCESSORIES.
 REFER TO SPEC (SECTION 10800) FOR TOILET ACCESSORIES
- PROVIDE (1) EXHAUST FAN AT EACH SHOWER ROOM
 REFER TO SHEET PLO FOR TYPE.
- ALL SEPARATION WALLS BETWEEN SHOWER ROOMS TO HAVE R-11 SOUND BATT INSULATION.



TYP. HDCP RESTROOM
 3/8" = 1'-0"



BABY CHANGING TABLE (ADA)

TYPICAL RESTROOM
 3/8" = 1'-0"
 RE: SHEE A4.1 FOR INTERIOR ELEVATION

FA-RTS	SECTION	COUNTY	TOTAL SHEETS	SHEET NO.
99-00013-00-HP	JERSEY	ILLINOIS	15	9
FED. ROAD DIST. NO. ILLINOIS FED. AID PROJECT				

CONTRACT NO. 97262

JOHN A. SHORTAL,
ARCHITECT, LTD.
608 POPLAR STREET
JERSEYVILLE, ILLINOIS 62052
(618) 779-2740

CITY OF
GRAFTON
GRAFTON, IL 62037

GRAFTON HARBOR
MARINA PROJECT
RESTROOM BUILDING
215 W. WATER STREET
GRAFTON, IL 62037

DATE: 9/1/05

REVISED: 00/00/00

ISSUED: FOR BID

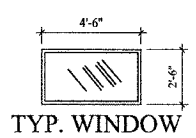
PROJ. NO.: 40001

DRAWN BY: JJS

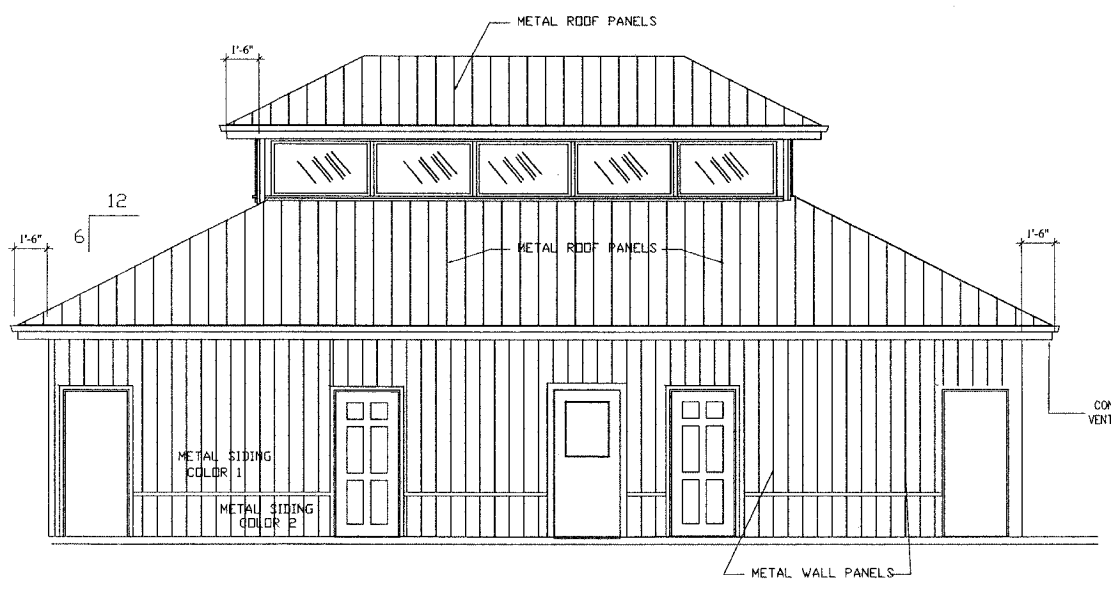
SHEET TITLE
EXTERIOR
ELEVATIONS

(9)

A4.0

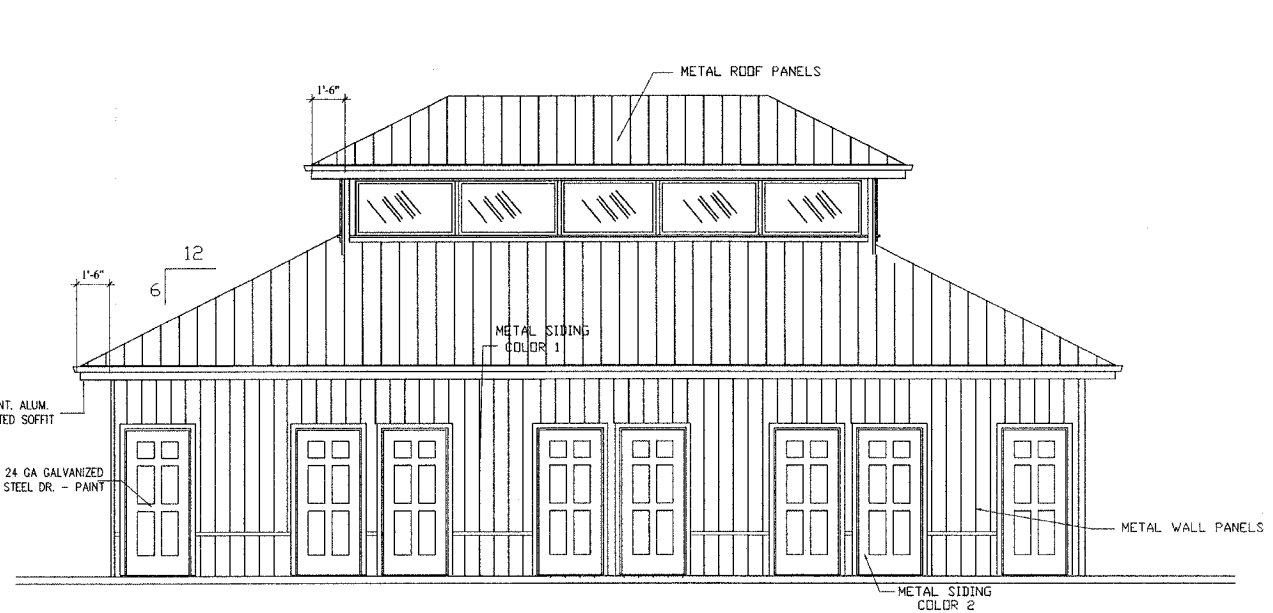


ALL WINDOWS BY WEATHERSHIELD, CARADCO OR ANDERSON MFG.
(ALUMINUM CLAD WINDOWS - COLOR TO BE SELECTED BY OWNERS.)
WINDOW GLAZING SHALL BE A HARD COAT LOW-E WITH LOW SHGC
WINDOW GLAZING SHALL DBL. GLAZED AND TEMPERED (1/2" GLAZING)
2 LAYERS OF 1/8" INSULATED, TEMPERD GLASS
OPTIMUM SHGC FACTOR SHALL BE = .35
CONTRACTOR HAS OPTION TO GLAZE IN THESE WINDOW FRAMES
WITH SAME GLAZING DESCRIBED ABOVE.



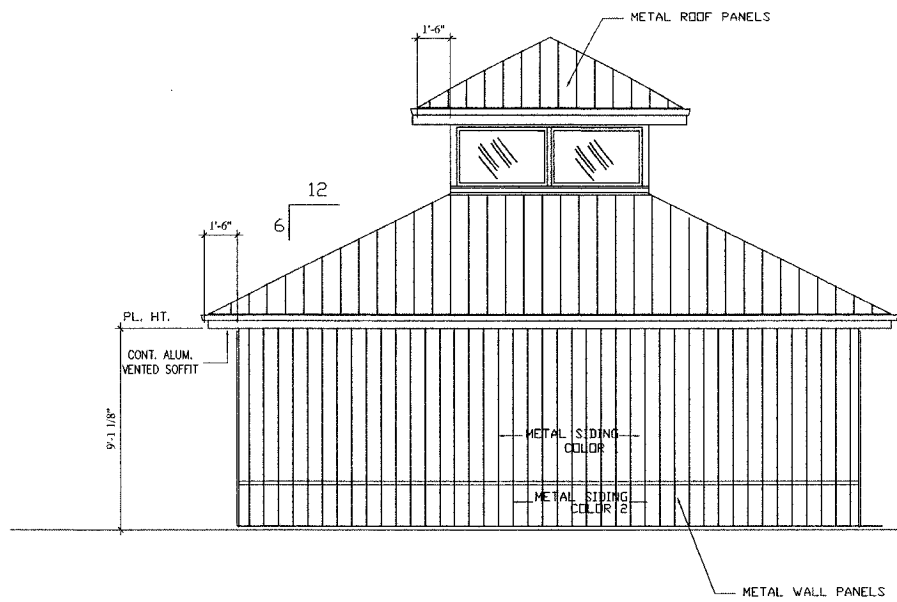
FRONT OF RESTROOM/SHOWER BUILDING
RIVER SIDE

④ ELEVATIONS
1/4" = 1'-0"



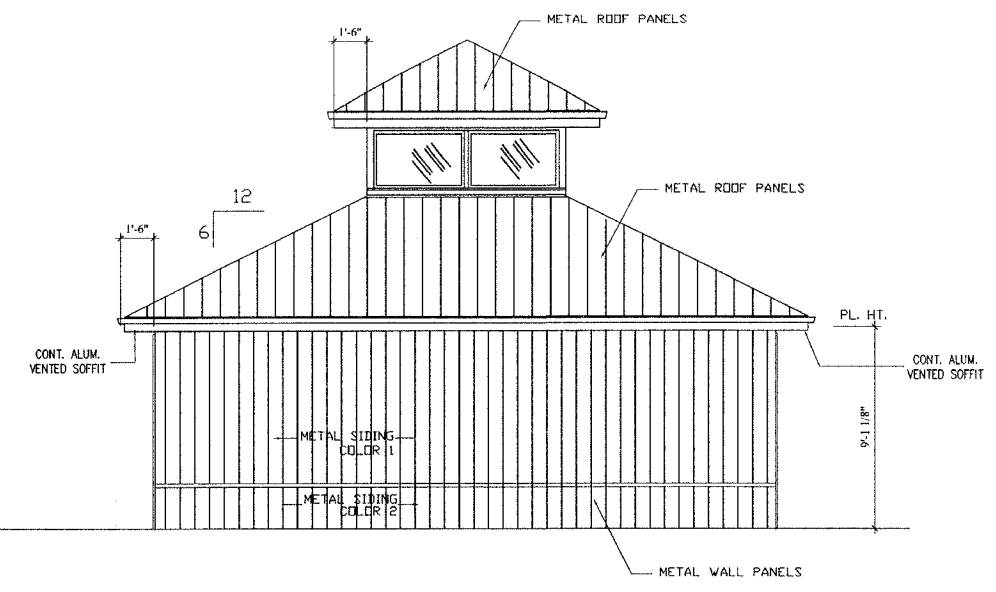
REAR OF RESTROOM/SHOWER BUILDING
HIGHWAY SIDE

③ ELEVATIONS
1/4" = 1'-0"



RESTROOM/SHOWER BUILDING

② ELEVATIONS
1/4" = 1'-0"



RESTROOM/SHOWER BUILDING

① ELEVATIONS
1/4" = 1'-0"

JOHN A. SHORTAL,
ARCHITECT, LTD.
608 POPLAR STREET
JERSEYVILLE, ILLINOIS 62052
(618) 779-2740

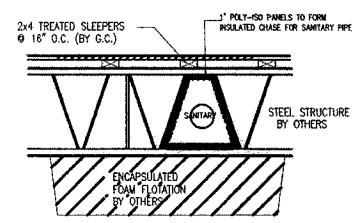
**CITY OF
GRAFTON**
GRAFTON, IL 62037

GRAFTON HARBOR
MARINA PROJECT
RESTROOM BUILDING
215 W. WATER STREET
GRAFTON, IL 62037

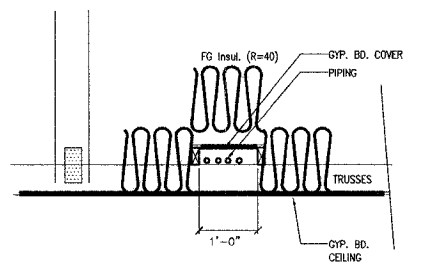
DATE: 9/1/05
REVISED: 00/00/00
ISSUED: FOR BID
PROJ. NO.: 40001
DRAWN BY: JAS

SHEET TITLE
BLDG. SECTION
ELEV. PLAN
& DETAILS
(10)

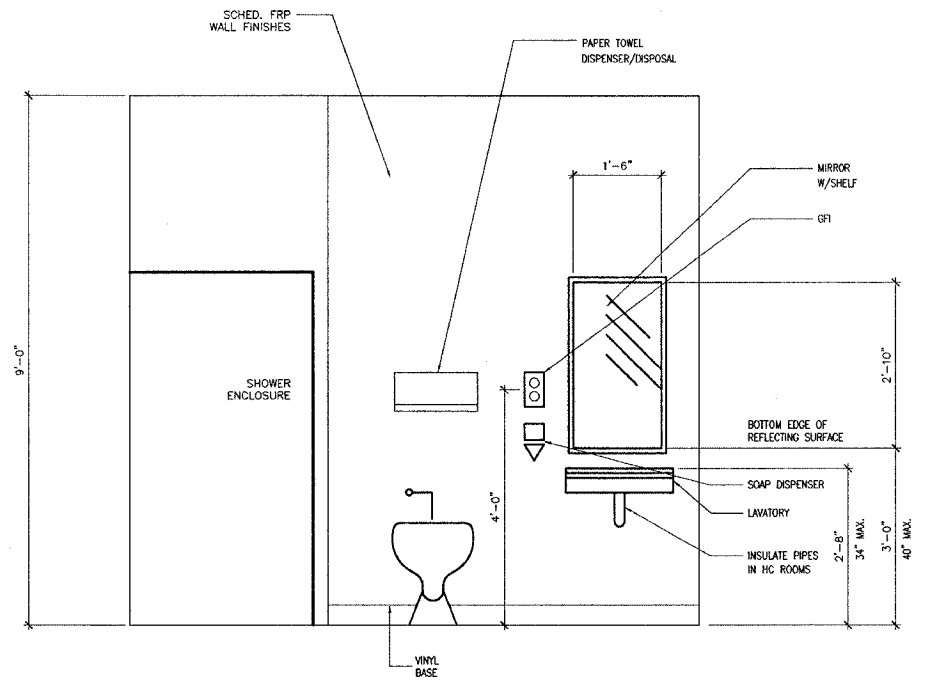
A4.1



3
A4.1 **SANITARY CHASE BELOW THE DECKING**
SCALE: 1" = 1'-0"

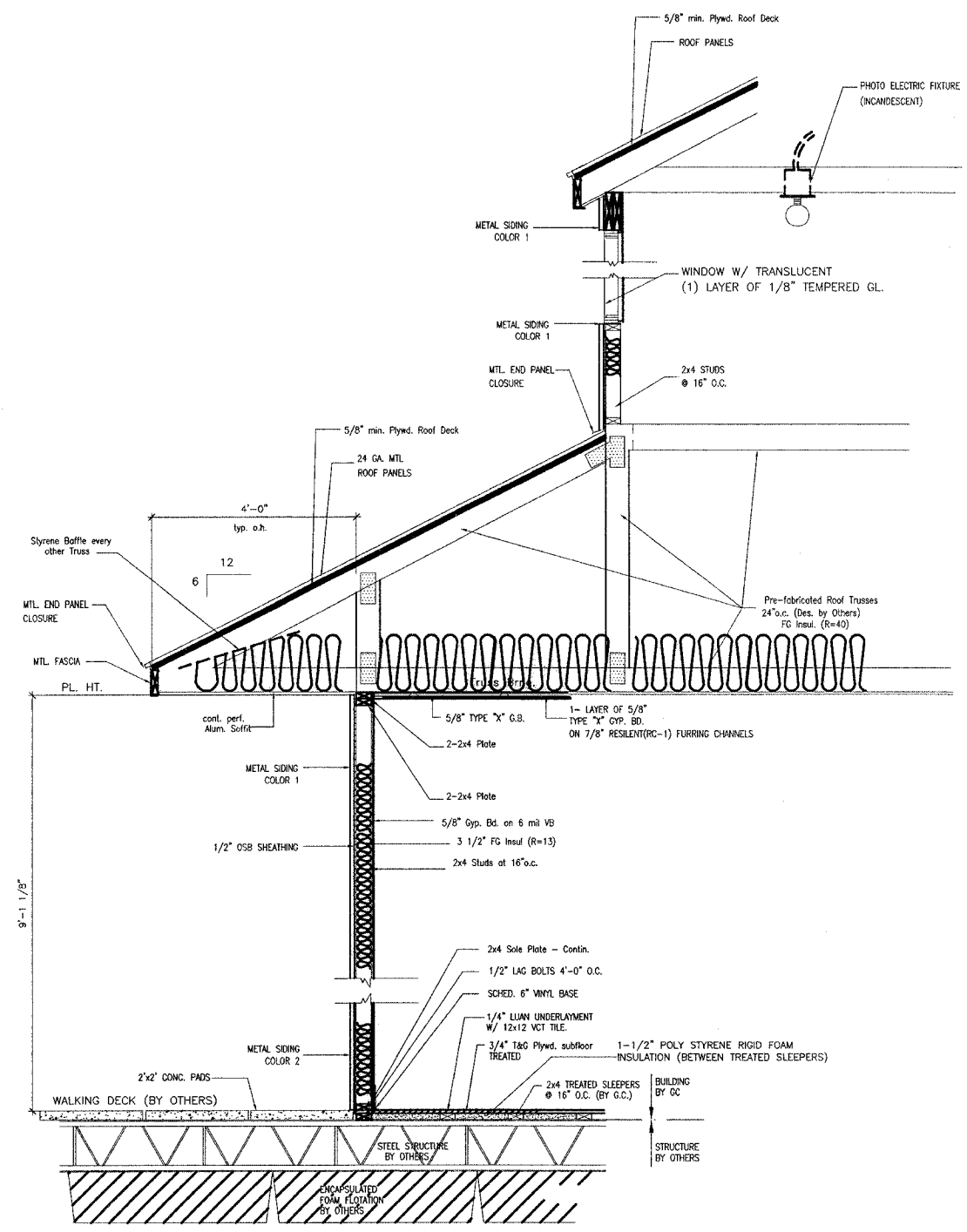


2
A4.1 **PIPING INSUL. IN ATTIC**
SCALE: 1" = 1'-0"



TYPICAL SHOWER ROOM 3/4" = 1'-0"

REFER TO SHEET "I" FOR FIXTURE MOUNTING HTS.



1 **BUILDING SECTION**
3/4" = 1'-0"

JOHN A. SHORTAL,
ARCHITECT, LTD.
608 POPLAR STREET
JERSEYVILLE, ILLINOIS 62052
(618) 779-2740

CITY OF GRAFTON
GRAFTON, IL 62037

GRAFTON HARBOR
MARINA PROJECT
RESTROOM BUILDING
215 W. WATER STREET
GRAFTON, IL 62037

DATE: 9/1/05

REVISED: 00/00/00

ISSUED: FOR BID

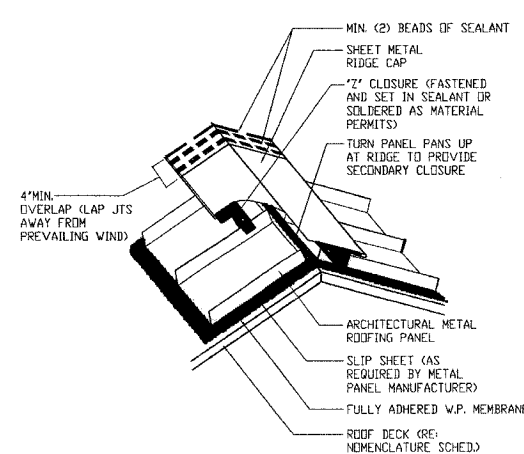
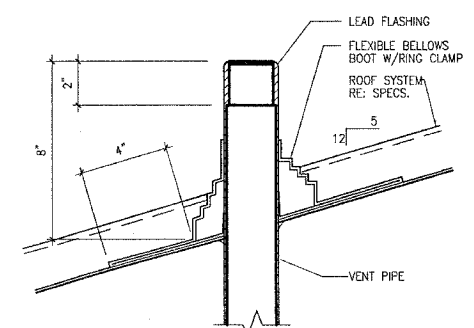
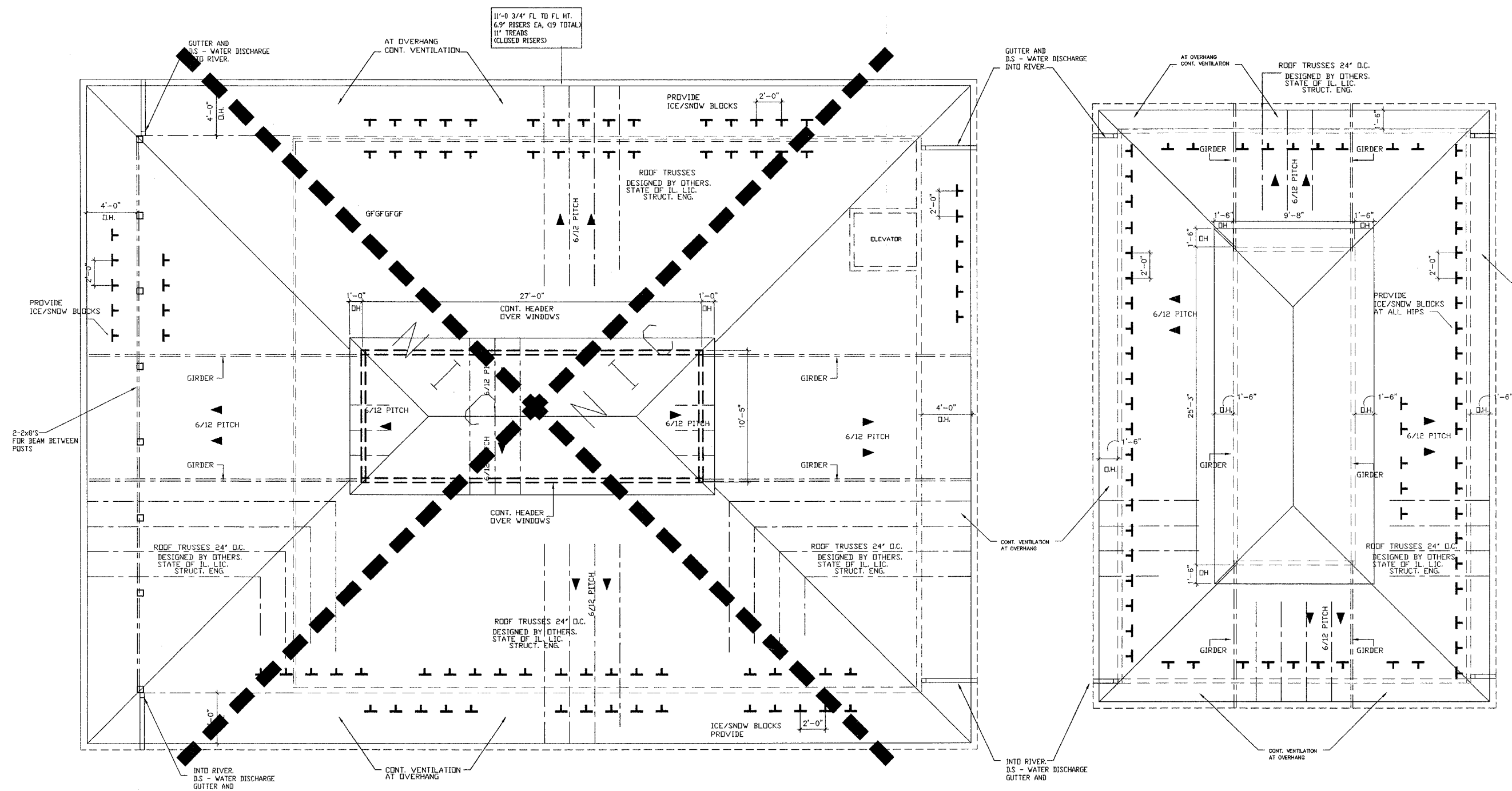
PROJ. NO.: 40001

DRAWN BY: JAS

SHEET TITLE
ROOF FRAMING PLAN

(11)

A5.0



- MISCELLANEOUS NOTES:**
- 1.) ALL ROOF AREAS SHALL DRAIN INTO GUTTERS AND DOWNSPOUTS PER PLANS.
 - 2.) DOWNSPOUTS SHALL BE PLACED IN APPROXIMATE LOCATION SHOWN ON ROOF PLANS.
 - 3.) ALL ROOF AREAS SHALL BE VENTED PER SECTION OF THE UNIFORM BUILDING CODE (UBC) 1999, AS AMENDED BY THE CITY OF BEECHER, ILLINOIS.
 - 4.) ROOF VENTS SHALL BE PLACED IN THE APPROXIMATE LOCATION AS SHOWN ON THE ROOF PLANS. NET FREE AREA OF VENTILATION IN THE UPPER 1/3 AND LOWER ROOF AREAS SHALL MEET SIZE SHOWN.
 - 5.) ALL ROOF SLOPES ARE 6/12 U.A.O.
 - 6.) ALL DOWNSPOUTS DISCHARGE DIRECTLY INTO STORM SYSTEM AND INTO THE RIVER.
 - 7.) PROVIDE CONCEALED WALL FLASHING AT ALL AREAS WHERE ROOF MEETS VERTICAL WALL & MINIMUM 9 INCH VERTICAL LEAD.
 - 8.) PROVIDE VALLEY FLASHING AND METAL DRIPS AS PER SPECIFICATIONS AND MANUFACTURER'S DIRECTIONS.
 - 9.) DRAFTSTOPPING SHALL BE CYP. RD. 5/8" TYPE X ON ONE SIDE ONLY, AND SHALL DIVIDE THE ATTIC INTO 2 SPACES OF LESS THAN 3,000 SF. EACH. ATTIC DOOR SHALL BE MIN. 22"x48" WITH SPRING LOADED HINGE & LATCH.
 - 10.) ALL ROOF SHEATHING SHALL BE 5/8" CDX

- NOTES**
1. TRUSS DESIGNER TO COORDINATE BOTTOM CHORDS OF TRUSSES FOR ELEVATOR SHAFT WALLS.
 2. PROVIDE 150 SQ. FT. OF ATTIC VENTILATION PER 2003 IBC CODE
 3. ALL OVERHANGS ARE FROM FACE OF STUD WALL, UNLESS NOTED OTHERWISE.
 4. CONTINUOUS ALUM VENTED SOFFIT.
 5. ICE AND SNOW CLEATS ARE FOR GRAPHIC REPRESENTATION ONLY. MUST HAVE 2 RDWS CONTINUOUSLY AROUND ALL FOUR ELEVATIONS OF BOTH BUILDINGS. STAGGER CLEATS (TYP)

1 ROOF FRAMING PLAN
1/4" = 1'-0"
PLAN NORTH

GENERAL NOTES

1. PROVIDE CONNECTION FOR ONE POWER OUTLET, ONE COMPUTER POWER OUTLET, ONE VOICE LINE AND ONE DATA LINE PER OWNER LOCATION (STORAGE 103)
2. REFER TO OTHER SHEET A60 FOR ADDITIONAL SPECIFICATIONS.
3. COORDINATE ALL VOICE, POWER, DATA, AND LIGHTING REQUIREMENTS WITH OWNER'S FURNITURE AND EQUIPMENT.
4. LOCATE BUILDING TRANSFORMER. COORDINATE FINAL LOCATION WITH POWER COMPANY (AMEREN UE) AND GENERAL CONTRACTOR (RE: A10)

LEGEND

HUBBELL 8" 26 WATT "D42" COMPACT FLUORESCENT DOWNLIGHT - OR EQUAL. LAMP: 26HPF TRIM FINISH 44985F (EXTERIOR SOFFIT W/ 13 FC @ 10'-0")

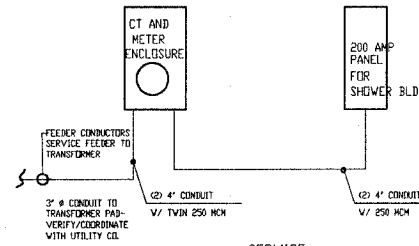
2 LAMP 48" FLUORESCENT FIXTURE (TB)

BATTERY BACKUP EMERGENCY LIGHTING. *PRESCOLITE* EMAX SERIES - WEDGE SHAPE. W/ 6W HALOGEN T 2 1/4 LAMPS. - OR EQUAL.

PRESCOLITE GC SERIES LED. - WHITE W/ 6" LETTERS SINGLE FACED VERSION. CLG. MTD. EXIT SIGN. - OR EQUAL.

WILLIAMS 1'x4' SURFACE MTD. FIXTURE IL-4-232-RA12125-CBR82-120 - OR EQUAL.

NOTE:
GROUND W/ #3/0 CU GROUNDING ELECTRODE
GROUND ROD AND COLD WATER LINE IN STRICT ACCORDANCE WITH THE NEC.
(GROUNDED BACK TO SHORE) WIRE SIZED BY ELECTRICAL CONTRACTOR)



SERVICE:
200 AMP, 4 WIRE 120/208 V - 1 PHASE
ELECTRIC PANEL RISER

SERVICE : 200 AMP
(1) 200 AMP

LIGHTING LOAD: BATH HOUSE
PROVIDE 20 AMP SPACES
3.5 VA PER SF. OF FLOOR SPACE
3.5 VA x 1,232 S.F. ± = (4,312 VA / 240) = 18 AMPERES

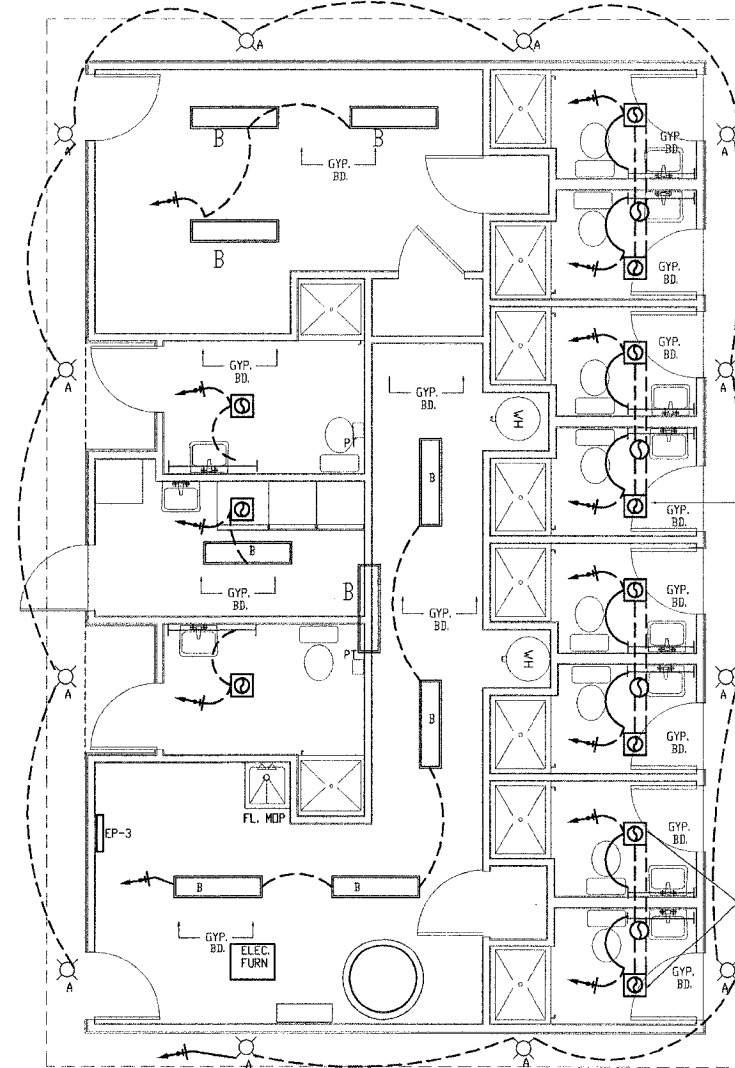
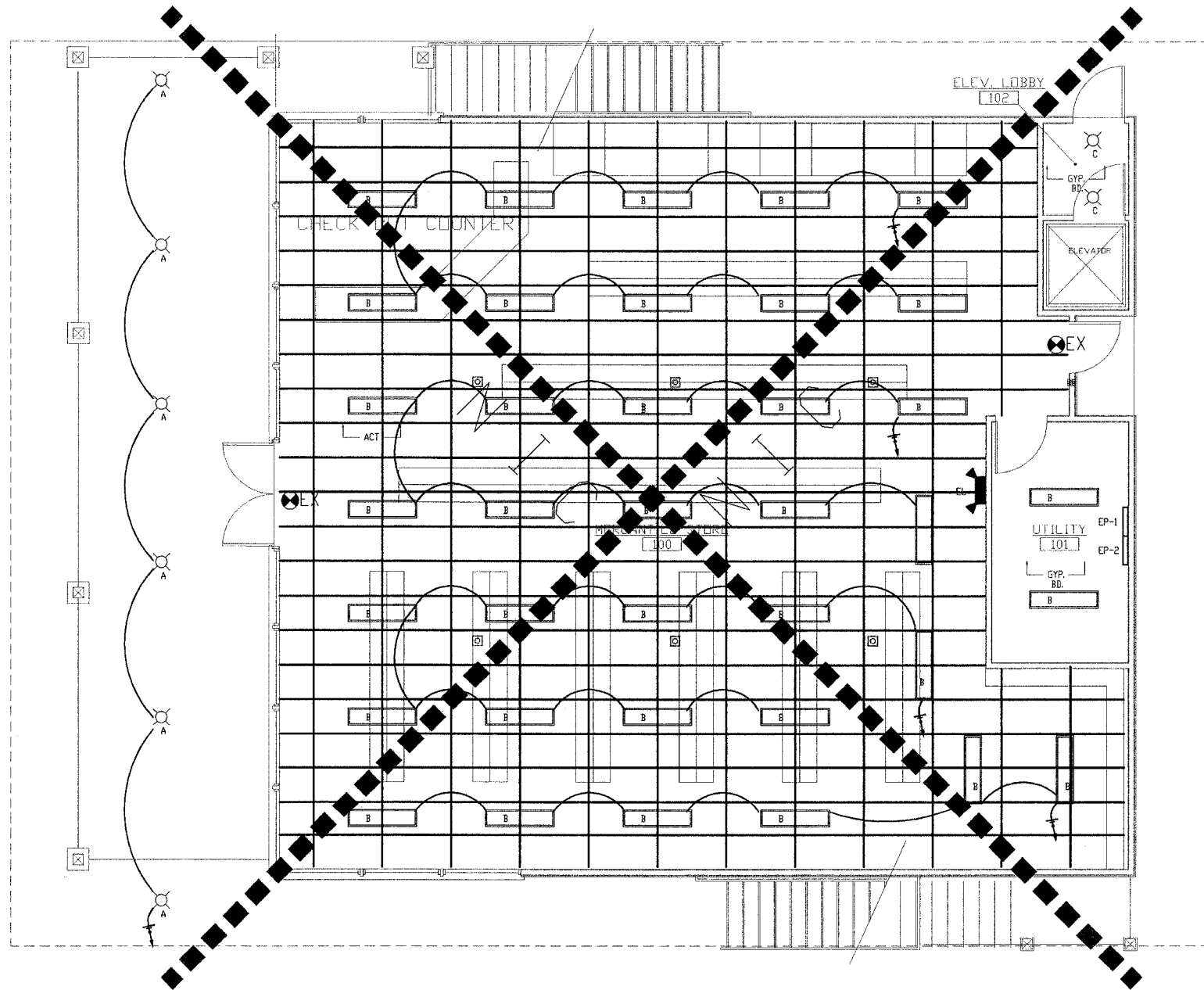
COMMON RECEPTACLE LOAD:
PROVIDE 15 AMP SPACES
1.5 VA PER SF. OF FLOOR SPACE
MAXIMUM 10 OUTLETS PER 15 AMP BREAKER
1.5 VA x 3970 SF. (INCLUDES BATHHOUSE) = (5,955 VA / 240) = 24 AMPERES

DEDICATED LOAD (EXHAUST FANS - 9 TOTAL)
15 AMP BREAKERS EACH
LOAD: 22 AMPS TOTAL

DEDICATED LOAD (DRYERS)
40 AMP BREAKERS EACH
LOAD: 24 AMPS x (2) = 48 AMPS

DEDICATED LOAD (AIR CONDITIONER):
60 AMP BREAKERS EACH
LOAD: 24 AMPS x (2) = 48 AMPS

TOTAL DEMAND LOAD:
160 AMPERES



PROVIDE (2) PHOTO ELECTRIC FIXTURE (INCANDESCENT) IN CLESTORY 150 WATT EACH

Restroom Exhaust Fans
"Broan" single port 6" duct Model #SP140

150 CFM ELEC. FAN
CONNECT EACH FAN TO EXHAUST UP THRU ROOF

EXTERIOR RECESSED FIXTURES ARE CONTROLLED BY PHOTOELECTRIC SWITCH

1 LIGHTING PLAN
1/4" = 1'-0"



PLAN NORTH

JOHN A. SHORTAL,
ARCHITECT, LTD.
608 POPLAR STREET
JERSEYVILLE, ILLINOIS 62052
(618) 779-2740

CITY OF
GRAFTON

GRAFTON, IL 62037

GRAFTON HARBOR
MARINA PROJECT
RESTROOM BUILDING
215 W. WATER STREET
GRAFTON, IL 62037

DATE: 9/1/05

REVISED: 00/00/00

ISSUED: FOR BID

PROJ. NO.: 40001

DRAWN BY: JcS

SHEET TITLE
LIGHTING PLAN

(12)

E1.0

JOHN A. SHORTAL,
ARCHITECT, LTD.
608 POPULAR STREET
JERSEYVILLE, ILLINOIS 62052
(618) 779-2740

**CITY OF
GRAFTON**
GRAFTON, IL 62037

GRAFTON HARBOR
MARINA PROJECT
RESTROOM BUILDING
215 W. WATER STREET
GRAFTON, IL 62037

DATE: 9/1/05
REVISED: 00/00/00
ISSUED: FOR BID
PROJ. NO.: 40001
DRAWN BY: JoS

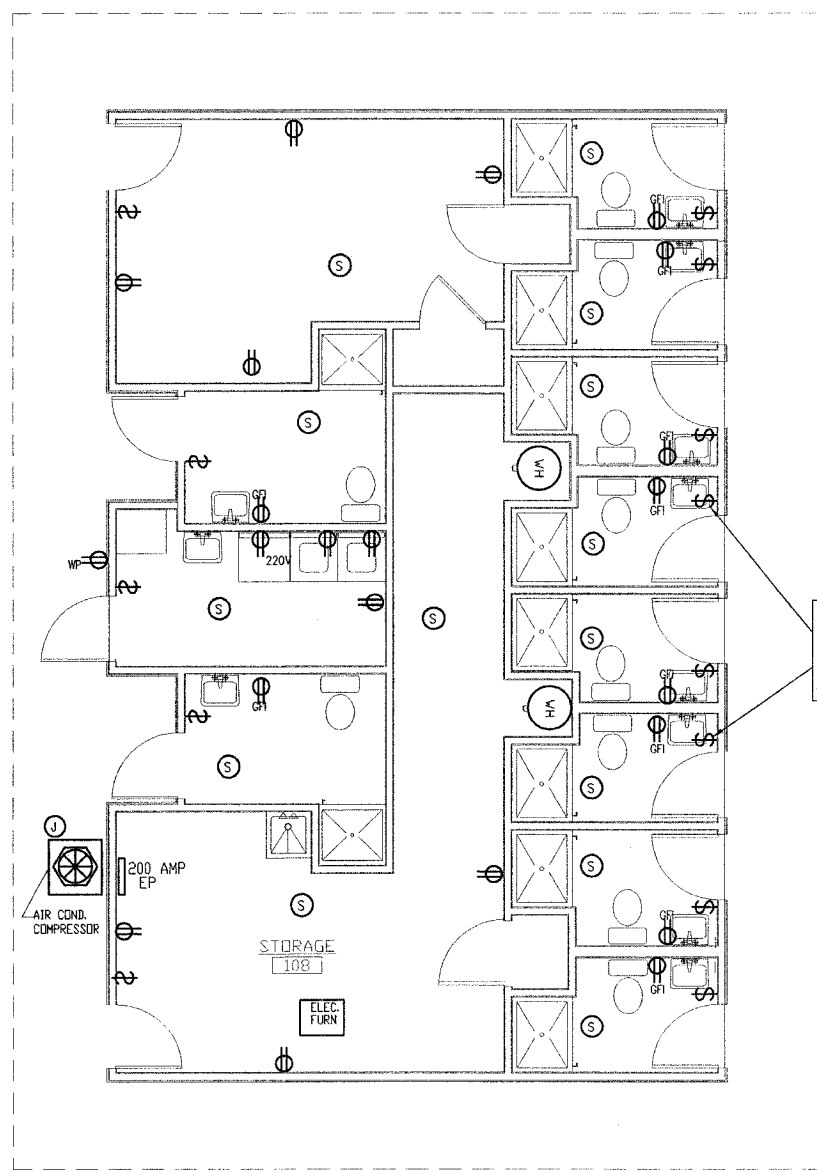
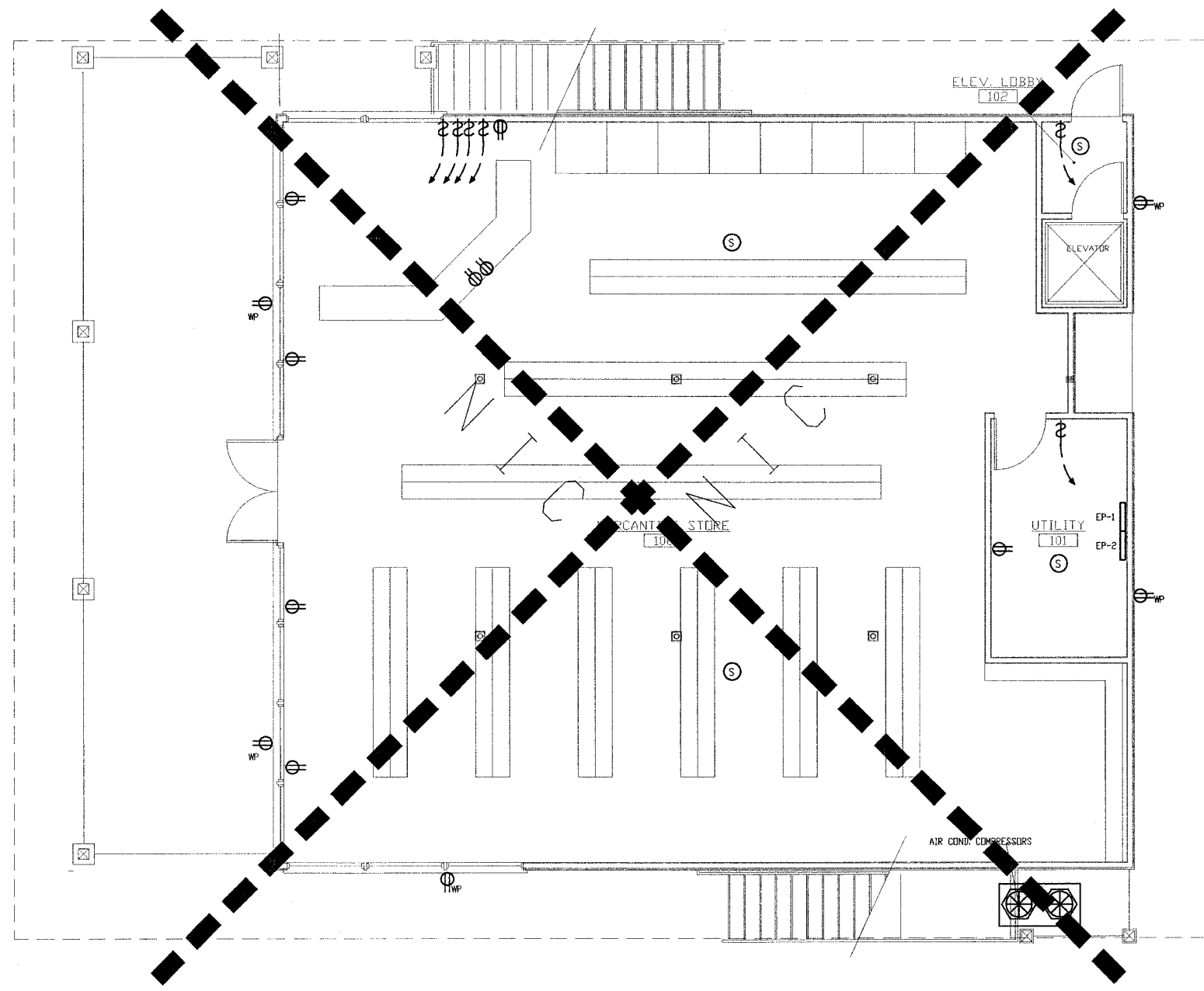
SHEET TITLE
POWER PLAN
(13)

E1.1

LEGEND FOR SYMBOLS

- \$ LIGHT SWITCH
- 3-WAY LIGHT SWITCH
- ⊕ ELECTRIC OUTLET
- 220V 220V RECEPTACLE
- ⊕ DEDICATED 20 AMP CIRCUIT FOR COMPUTER
- ⊕ GFI GROUND FAULT INTERRUPTER OUTLET
- ⊕ WP WATER PROOF EXTERIOR GFI
- ⊕ RECESSED FLOOR MTD. DUPLEX RECEPTACLE
- ⊕ QUADRAPLEX ELECTRIC OUTLET
- ▽ 2-LINE TELEPHONE & DATA OUTLET
- ⊙ S SMOKE DETECTOR - 110V AC
- ⊙ H HEAT DETECTOR
- ⊙ J JUNCTION BOX

ELECTRIC WATER HEATER
2) BRADFORD WHITE VR-250 - OR EQUAL.



1 POWER PLAN
1/4" = 1'-0"
PLAN NORTH

JOHN A. SHORTAL,
 ARCHITECT, LTD.
 608 POPLAR STREET
 JERSEYVILLE, ILLINOIS 62052
 (618) 779-2740

**CITY OF
 GRAFTON**
 GRAFTON, IL 62037

GRAFTON HARBOR
 MARINA PROJECT
 RESTROOM BUILDING
 215 W. WATER STREET
 GRAFTON, IL 62037

DATE: 9/1/05

REVISED: 00/00/00

ISSUED: FOR BID

PROJ. NO.: 40001

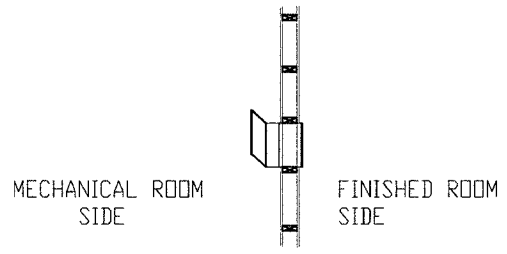
DRAWN BY: JcS

SHEET TITLE
 MECHANICAL
 PLAN
 (14)

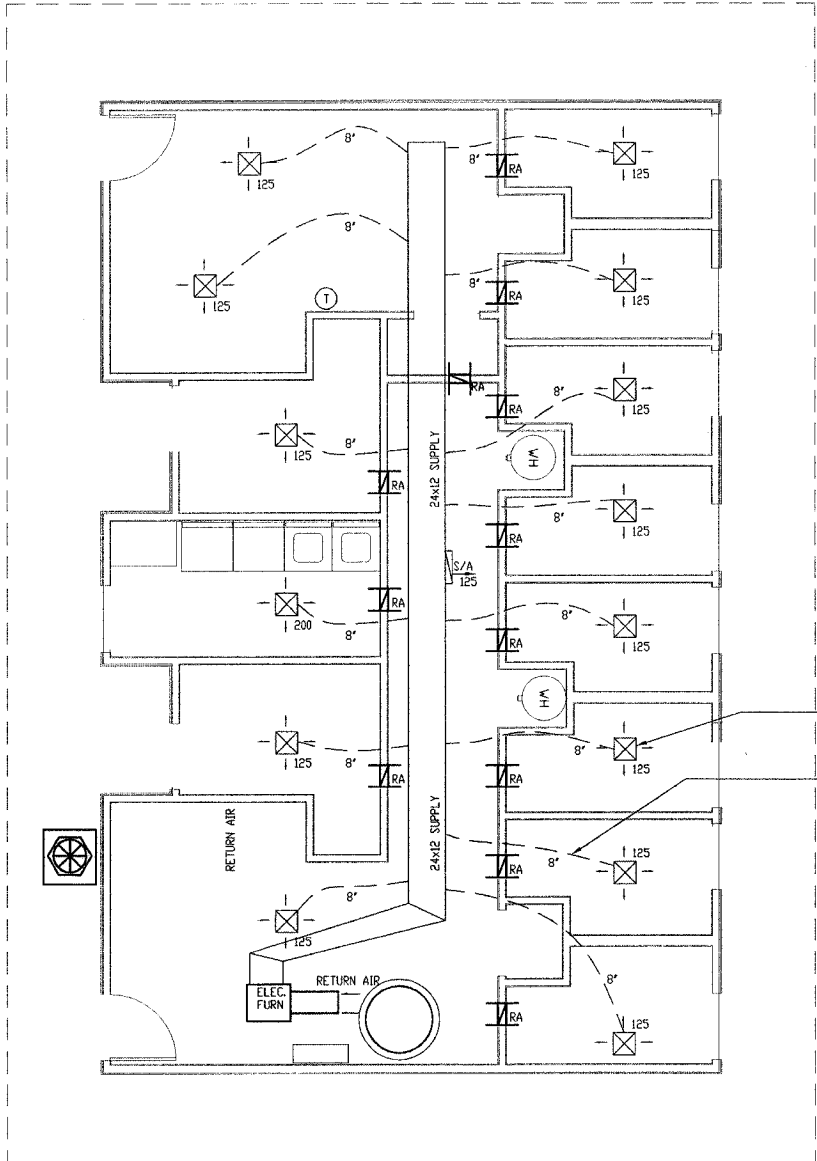
M1.0

ELECTRIC WATER HEATER
 2) BRADFORD WHITE VR-250 - OR EQUAL.

QTY.	HVAC SCHEDULE
1)	'GOODMAN' MODEL #GMNT 120-5 GAS FURNACES OR EQUAL 110,000 BTUH GAS OUTPUT - 92.6 DDE/AFUE
(1)	'JANITROL' MODEL #U62 INDOOR A-COIL & INSULATED COIL BOXES.
(1)	'JANITROL' MODEL #CKJ60-1 OUTDOOR CENTRAL AIRS - OR EQUAL
(1)	COPPER TUBING LINE SET - 3/8" AND 7/8" LIQUID AND SUCTION CONNECTIONS.
(1)	HEAT/COOL DIGITAL THERMOSTAT W/ PROGRAMMABLE ECONOMIZER CYCLES AND LOCKBOX.



RETURN AIR GRILLES ARE:
 TRANSFER 'Z' GRILLE @ 8'-4" CEILING HT.



ALL SUPPLY DIFFUSERS ARE
 12"x12"

ALL FLEX RUNS ARE
 WITH INSULATED 8"

① MECHANICAL PLAN
 1/4" = 1'-0"
 PLAN NORTH

**JOHN A. SHORTAL,
ARCHITECT, LTD.**
608 POPLAR STREET
JERSEYVILLE, ILLINOIS 62052
(618) 779-2740

**CITY OF
GRAFTON**
GRAFTON, IL 62037

**GRAFTON HARBOR
MARINA PROJECT
RESTROOM BUILDING**
215 W. WATER STREET
GRAFTON, IL 62037

DATE: 9/1/05
REVISED: 00/00/00
ISSUED: FOR BID
PROJ. NO.: 40001
DRAWN BY: JGS

SHEET TITLE
PLUMBING PLAN
(15)

P1.0

FIXTURE SCHEDULE

Water heater:
"Energy Kinetics" 80 gal. electric.

LAVATORY SINK: (F1)
"BRADLEY" - TERRON IMPERIAL (ADA) single station, solid surface, MOD #L-18 21"x18" ADA compliant 4" faucet centers

LAVATORY (FAUCET): (F1)
BRADLEY 900 BR Model # SS3-284 (ADA)
S83-005 (24 VOLT TRANSFORMER)
SS3-056 (TMA Vernotherm thermostatic mixing valve)
289-1231 Drain assembly.

Water Closet: ADA (F2)
"MANSFIELD" ADRATIC 17" elongated model #1317, with 1 1/2" top spud
Sloan flush valve "Royal model #110 or Flushometer gem 2110

Water Closet: (F4)
"MANSFIELD" ULF COMMERCIAL" elongated model #1310, 1 1/2" top spud
Sloan flush valve "Royal model #110 or Flushometer gem 2110

SEAT
MANSFIELD #295C

SHOWER (ADA)
"BRADLEY" HN 250 Barrier-Free Shower Title 24 Compliant
All standard equipment. (SEE PLANS FOR VALVE/SEAT CONFIGURATION)
WITH (HN250-EF) EQUA-FLO HD PRESSURE BALANCING MIXING VALVE.
COLOR - BONE

SHOWER (TYPICAL)
FIBERGLASS SURROUND
"BRADLEY" MODEL WS-1WCA
INDIVIDUAL COVERALL WALL SHOWER FIXTURE
PROVIDE 32x42 SHOWER PANS. ACRYLIC MODIFIED POLYESTER RESIN.
COLOR - BONE

Restroom Exhaust Fan:
"Broan" single port 6" duct - Model #SP140

Map Sink: molded stone (F3)

FAT PRODUCTS: Model # MSB-3624 - faucet 830AA - hose/dip 832AA
map hanger 889AA - vinyl bumperguard E77-AA - wall guard MSG 2424

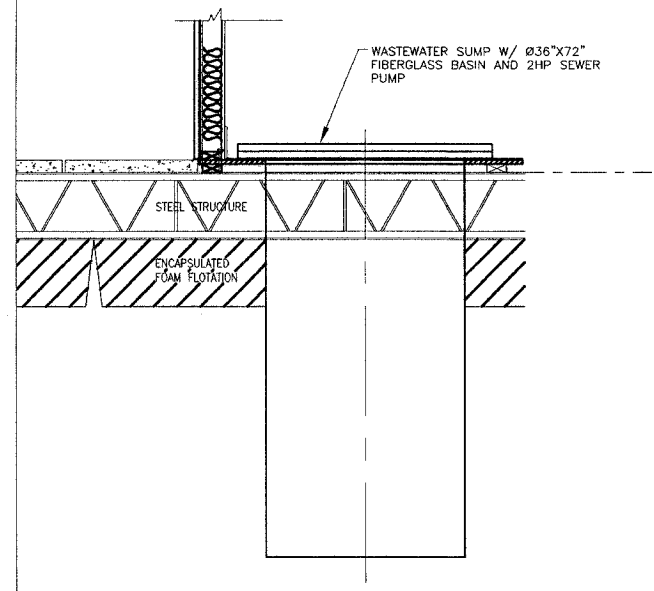
Backflow preventer: ARMITROL (Therm-x-tral ST-12)

SEE SPECIFICATIONS FOR ADDITIONAL FIXTURE & FITTINGS. (DRAINS, CLEANOUTS, TRAPS, PIPING ETC)

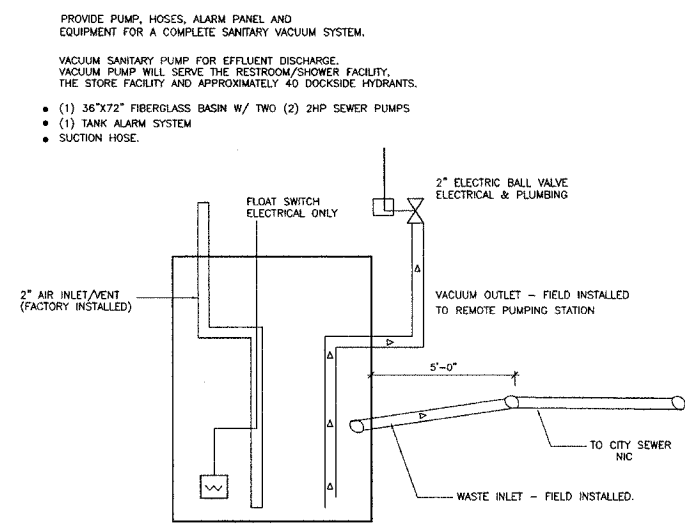
SANITARY WASTE HOLDING TANK DESIGNED BY CONTRACTOR/VENDOR SHALL MEET THE ILL. DEPT OF PUBLIC HEALTH & ILL PLUMBING CODE.

- 1" HOT & COLD WATER SUPPLY THROUGHOUT THE BUILDING REDUCE DOWN TO 1/2" AT EACH FIXTURE.
- 1/2" HOT & COLD WATER SUPPLY @ LAV. (TYP.)
- 1/2" COLD SUPPLY @ SHOWER AND WATER CLOSET. (TYP.)
- 3" VENT @ W.C. (TYP.)
- 1 1/2" VENT @ LAV & SHOWER. (TYP.)

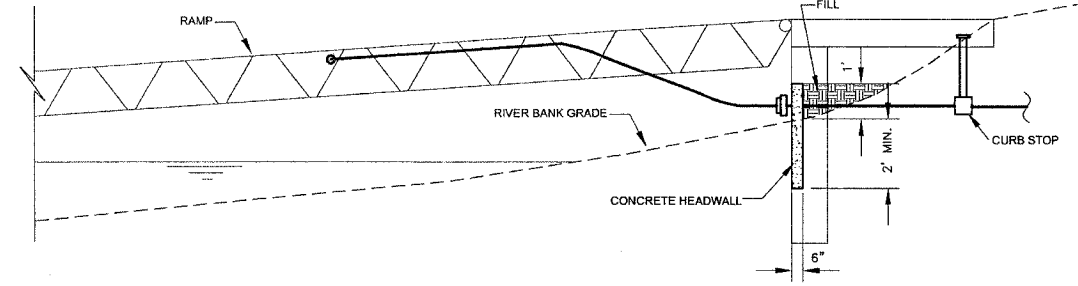
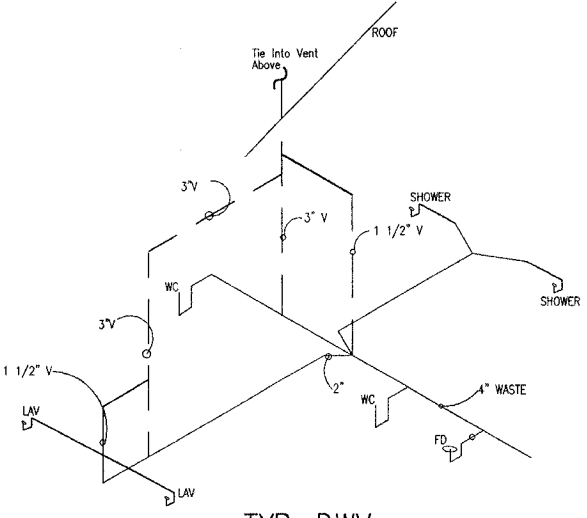
ALL SUPPLY PLUMBING IN ATTIC ABOVE ALL PIPING TO BE INSULATED.



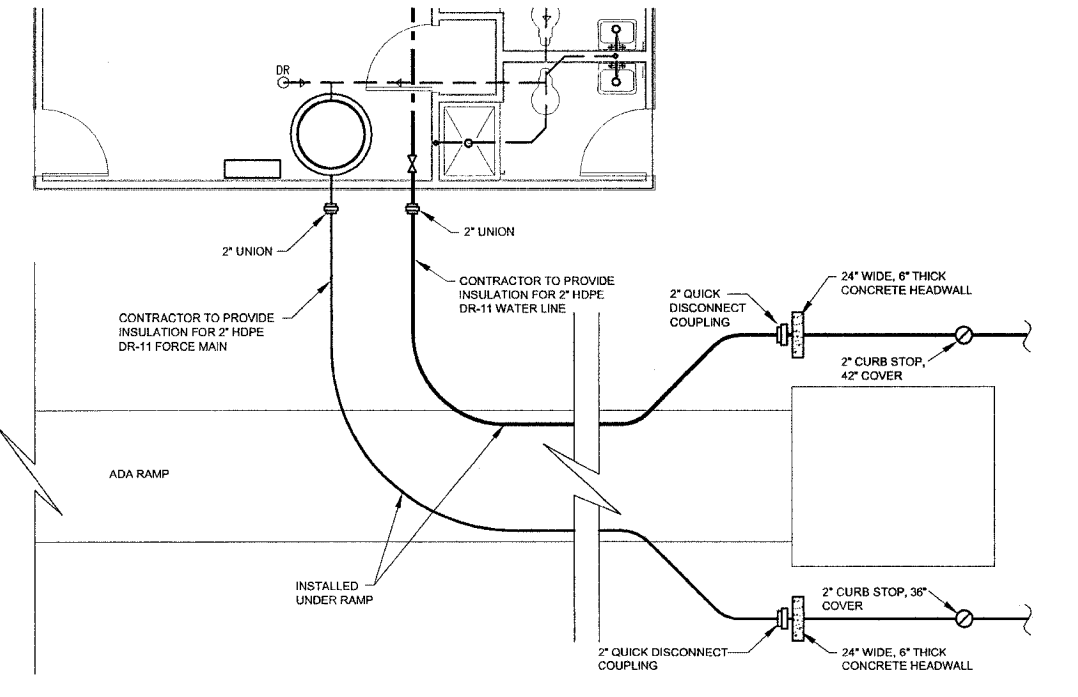
6 SEPTIC BASIN
NTS



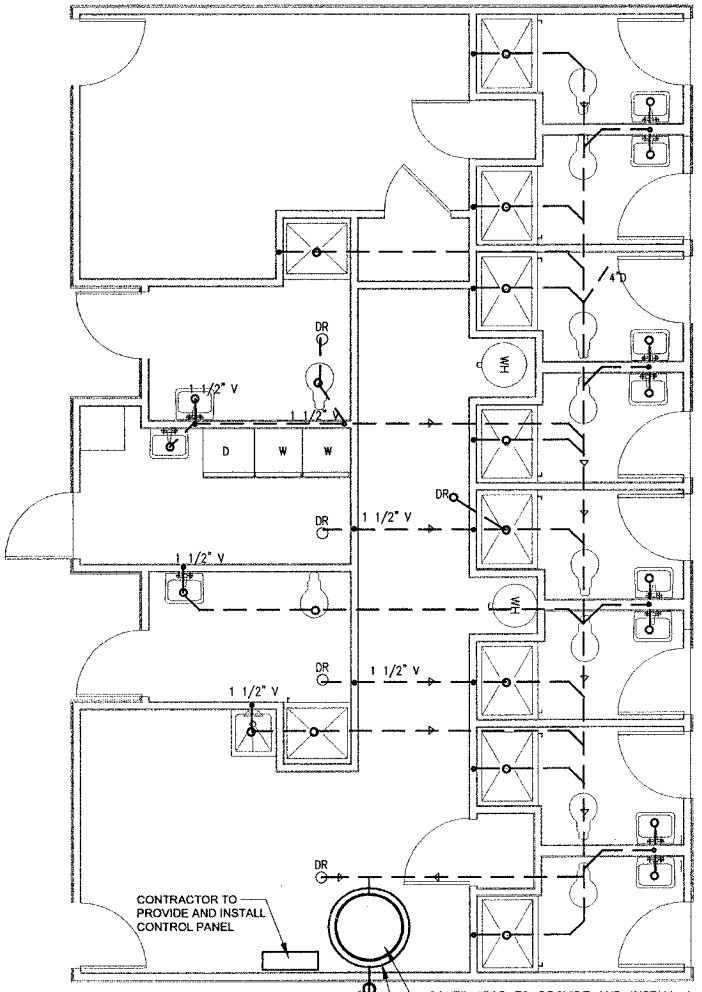
3 SEPTIC BASIN SCHEMATIC
NTS



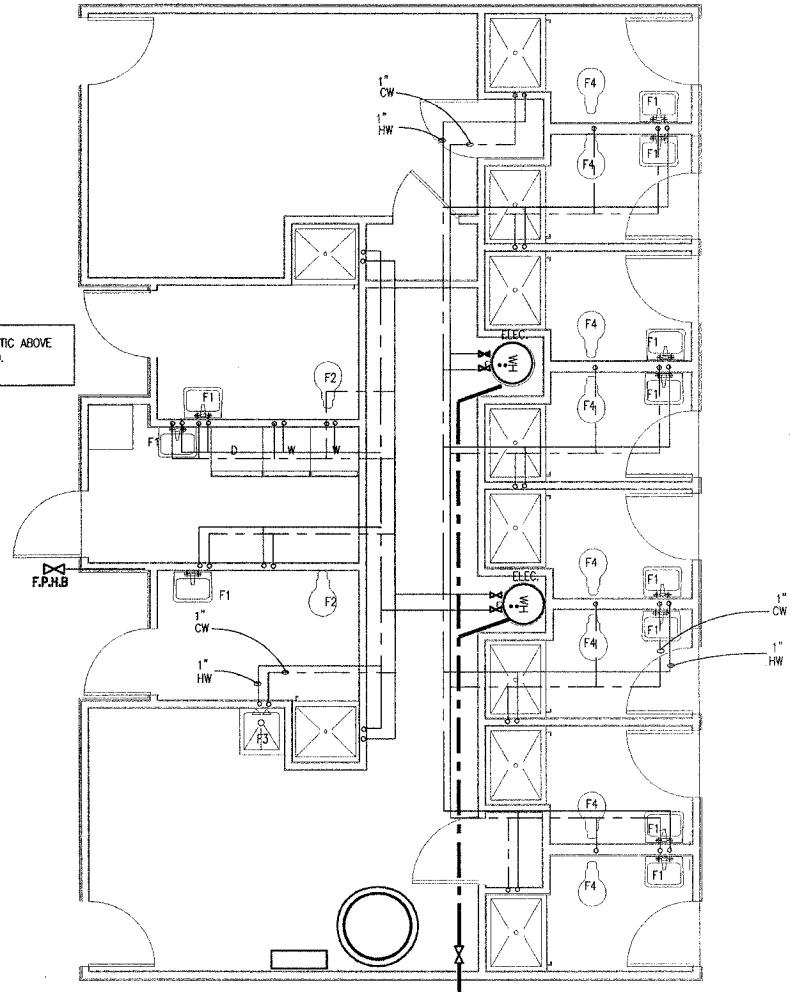
5 PIPE CONNECTIONS - SECTION VIEW
NTS



4 PIPE CONNECTIONS - PLAN VIEW
NTS



1 PLUMBING PLAN (SANITARY)
1/4" = 1'-0"



1 PLUMBING PLAN (SUPPLY)
1/4" = 1'-0"