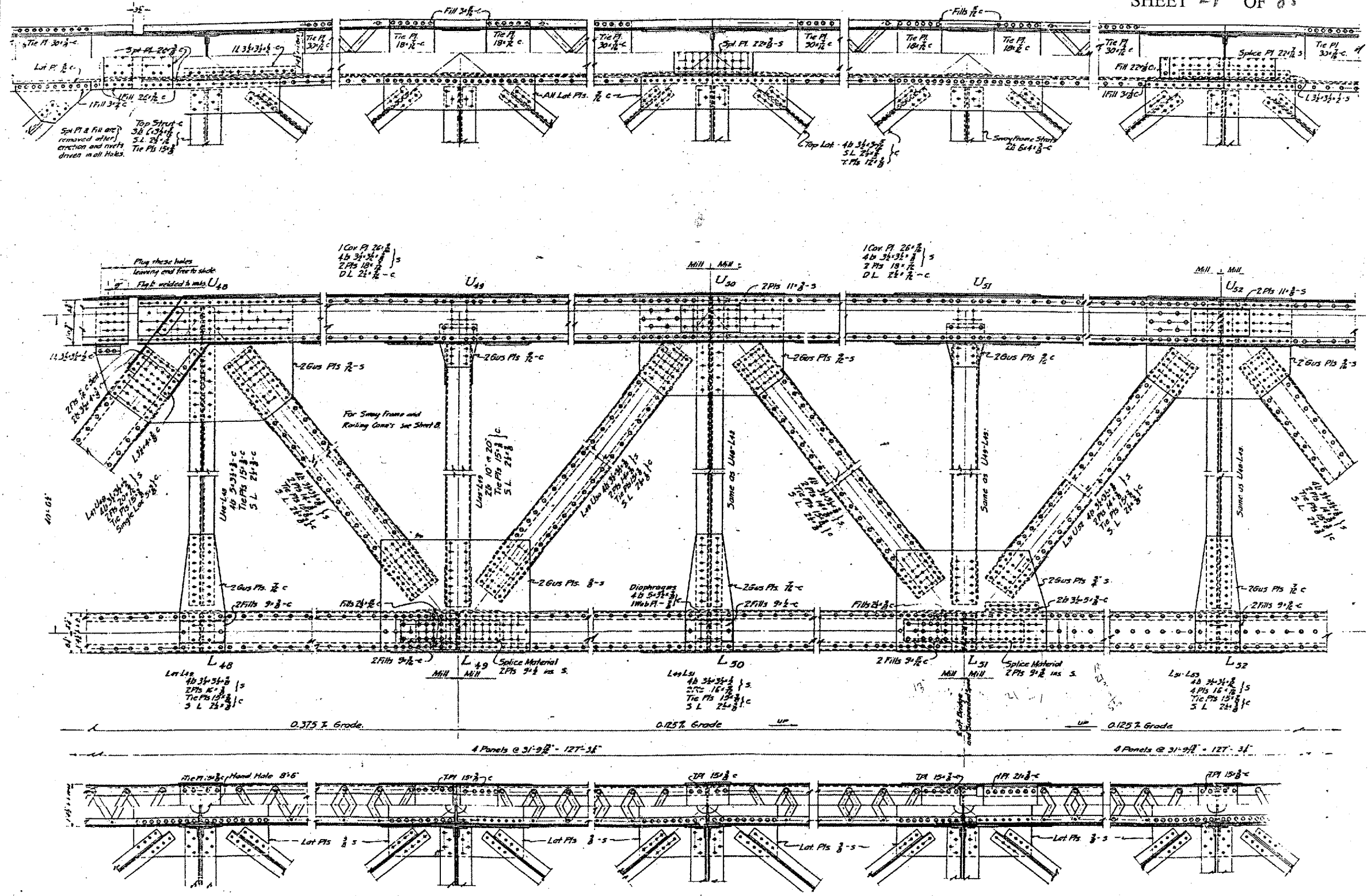


CONTRACT 98939
 U.S. RTE. 60 & U.S. RTE. 62
 (138D-BR) P-1
 ALEXANDER COUNTY
 SHEET 21 OF 85



All Bottom Lot's 2x 5/4 3/4
 3/4" Vertical

BRIDGE NO. 1
 STRUCTURE 002-0005
 FOR INFORMATION ONLY

THE CAIRO BRIDGE AND TERMINAL COMPANY
 MISSISSIPPI RIVER BRIDGE AT CAIRO, ILLINOIS
 254 FT 6 1/2 IN SUSPENDED SPAN
 SCALE 3/4" = 1'-0"
 WADDELL AND HARDESTY
 NEW YORK CITY
 CONSULTING ENGINEERS
 AUGUST 16, 1927