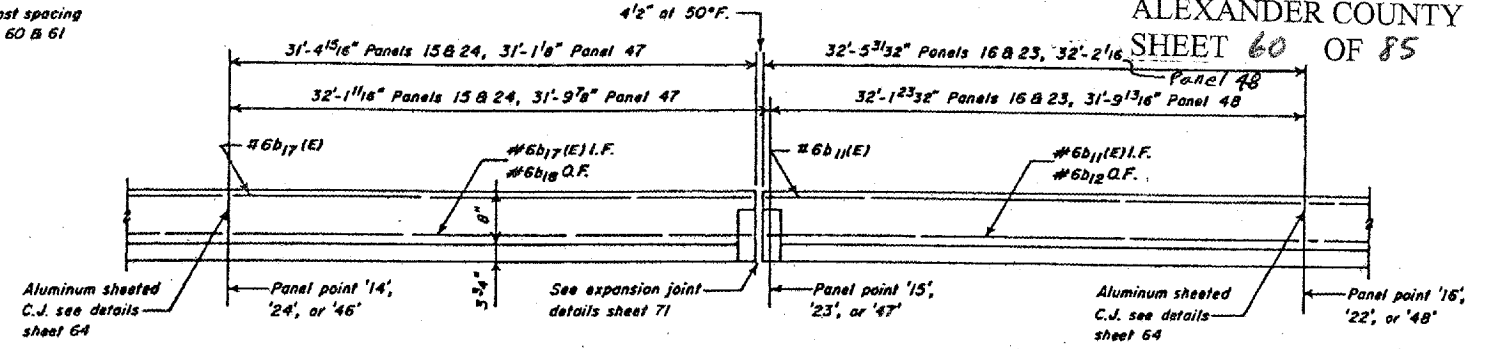


AT TYPICAL PIER PANEL
(TYPE I PANEL)

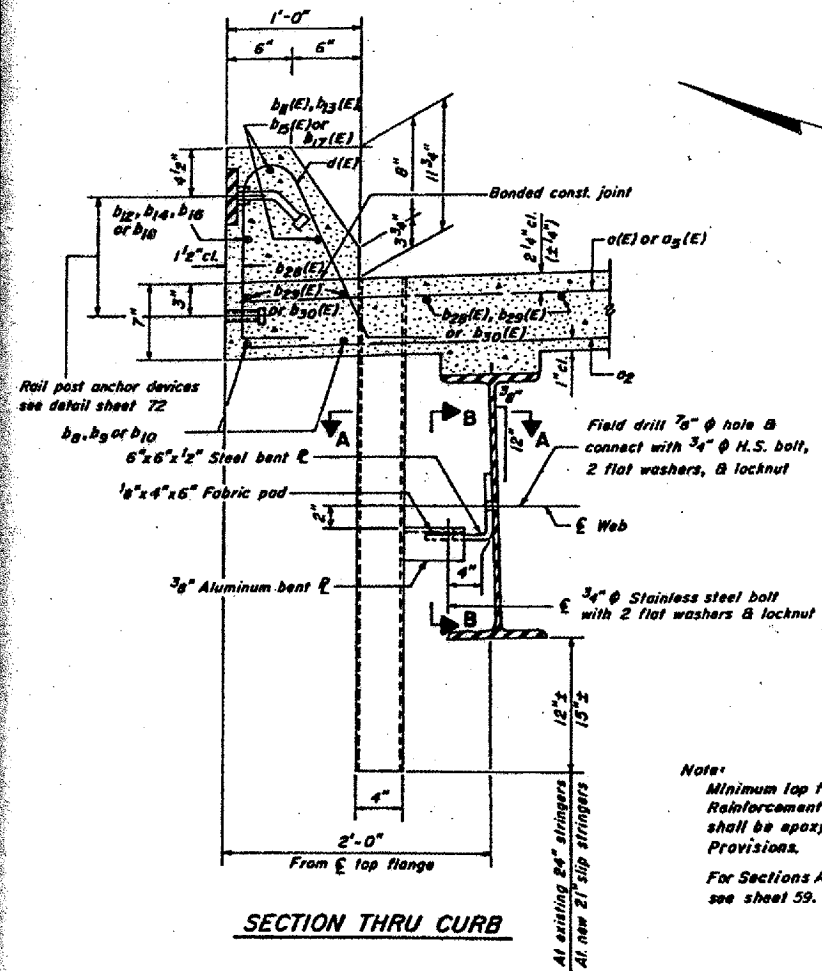
AT TYPICAL INTERIOR PANEL
(TYPE III & IV PANELS)



AT TYPICAL SLIP STRINGER PANEL
(TYPE I & II PANELS)

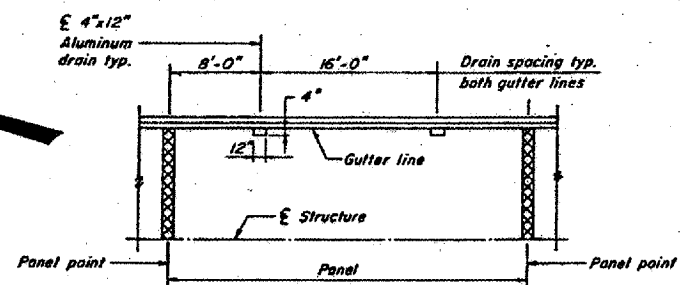
PARTIAL INSIDE ELEVATION OF CURB
(Curb elevation is symmetrical about panel point '51')

BILL OF MATERIAL

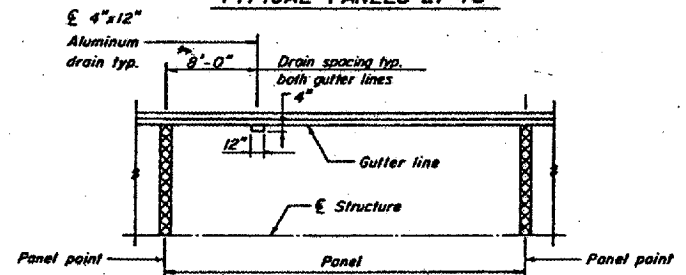


SECTION THRU CURB

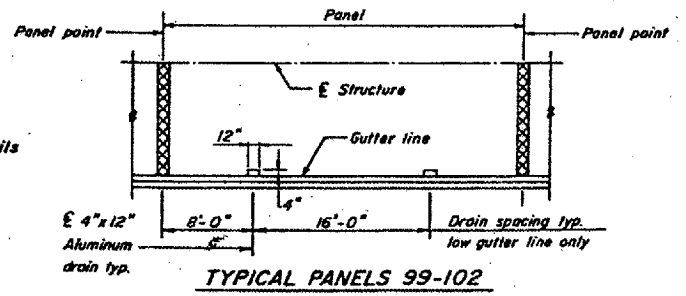
Note:
Minimum lap for #6 Bars = 2'-8"
Reinforcement bars designated (E)
shall be epoxy coated. See Special
Provisions.
For Sections A-A, B-B & Drain details
see sheet 59.



TYPICAL PANELS 27-75



TYPICAL PANELS 1-26 & 76-98

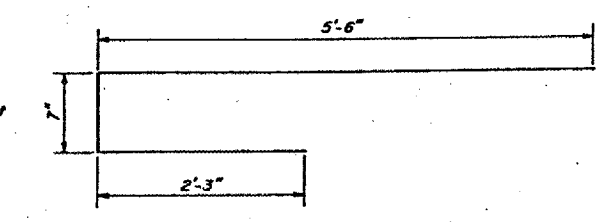


TYPICAL PANELS 99-102

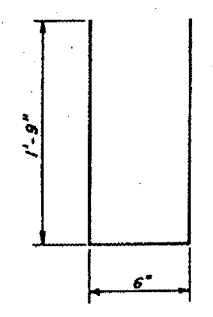
KEY PLAN-DRAIN SPACING
(Total number of drains required = 302)

- Type I Panels**
Panels 1, 6, 23, 48, 55, 80, 87 & 102
Total 8 Panels
- Type II Panels**
Panels 15, 24, 47, 56, 79 & 88
Total 6 Panels
- Type III Panels**
Panels 41-46, 49-54 & 57-62
Total 18 Panels
- Type IV Panels**
Panels 2-14, 17-22, 25-40, 63-78,
81-86 & 89-101
Total 70 Panels

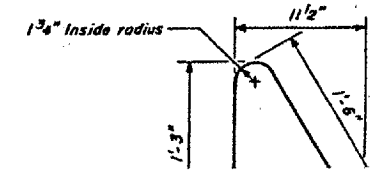
BAR	NUMBER				TOTAL	SIZE	LENGTH	SHAPE
	TYPE I PANELS	TYPE II PANELS	TYPE III PANELS	TYPE IV PANELS				
a(E)	448	360	1026	3990	5824	#5	21'-8"	—
a ₂	288	234	648	2520	3690	#5	21'-8"	—
a ₃ (E)	80	42	180	700	1002	#7	21'-8"	—
a ₆	80	30	180	700	990	#6	18'-5"	—
b ₂	160		342		502	#5	30'-4"	—
b ₃				1362	1362	#5	30'-8"	—
b ₄		114			114	#5	29'-4"	—
b ₁₁ (E)	32				32	#6	32'-0"	—
b ₁₂	16				16	#6	32'-0"	—
b ₁₃ (E)				280	280	#6	31'-10"	—
b ₁₄				140	140	#6	31'-10"	—
b ₁₅ (E)			72		72	#6	31'-7"	—
b ₁₆			36		36	#6	31'-7"	—
b ₁₇ (E)		24			24	#6	30'-11"	—
b ₁₈		12			12	#6	30'-11"	—
b ₂₂ (E)	192		432		624	#5	30'-4"	—
b ₂₃ (E)				1680	1680	#5	30'-8"	—
b ₃₀ (E)			144		144	#5	29'-4"	—
d(E)	512	372	1152	4480	6516	#4	3'-10"	—
s ₁	168			672	840	#3	4'-0"	—
x(E)	480	180	1080	4200	5940	#6	8'-4"	—
x ₁ (E)		204			204	#6	6'-2"	—
Reinforcement Bars							Pound	184,700
Reinforcement Bars (Epoxy Coated)							Pound	366,250
Class X Concrete							Cu.Yd.	1,938.0
Shear Connectors #4							Each	34,016
Furnishing & Erecting Structural Steel							Pound	146,440
Floor Drains							Each	302



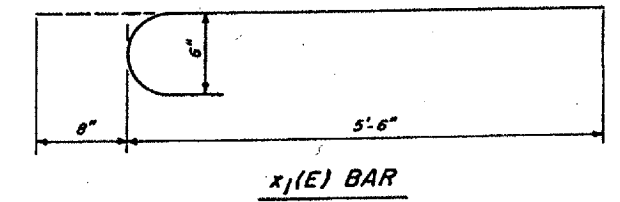
x(E) BAR



s₁ BAR



BRIDGE NO. 1
STRUCTURE 002-0005
FOR INFORMATION ONLY



x₁(E) BAR

TRUSS SPANS DECK DETAILS
CONCRETE FLOOR ALTERNATE
F.A.U.S. Rte. 9811 (U.S. 60 & 62)
S.B.I. 150 SECTION 138D-BR
ALEXANDER CO., IL. MISSISSIPPI CO., MO.
STATION 28 + 13.08

DESIGNED	SP
CHECKED	R.F.C.
DRAWN	brh
CHECKED	R.F.C.-E.S.