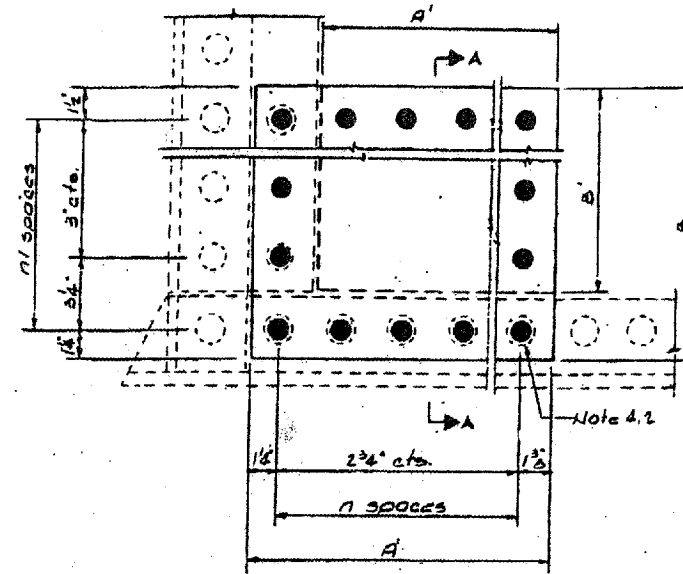
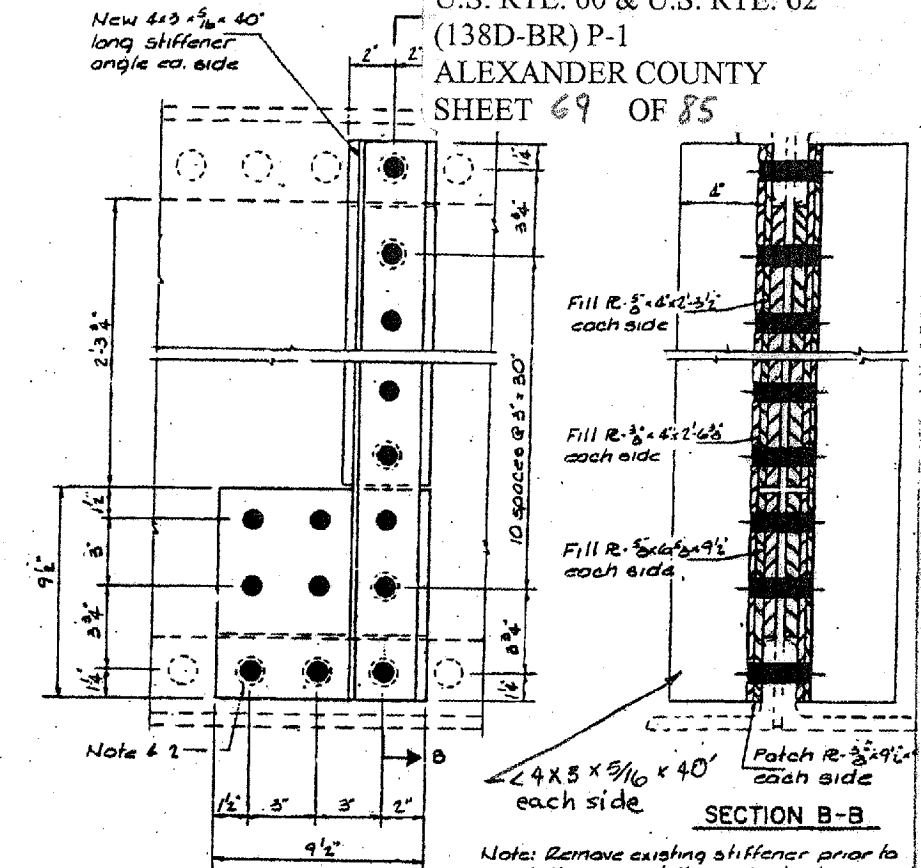


REPAIR DETAIL - TYPE I

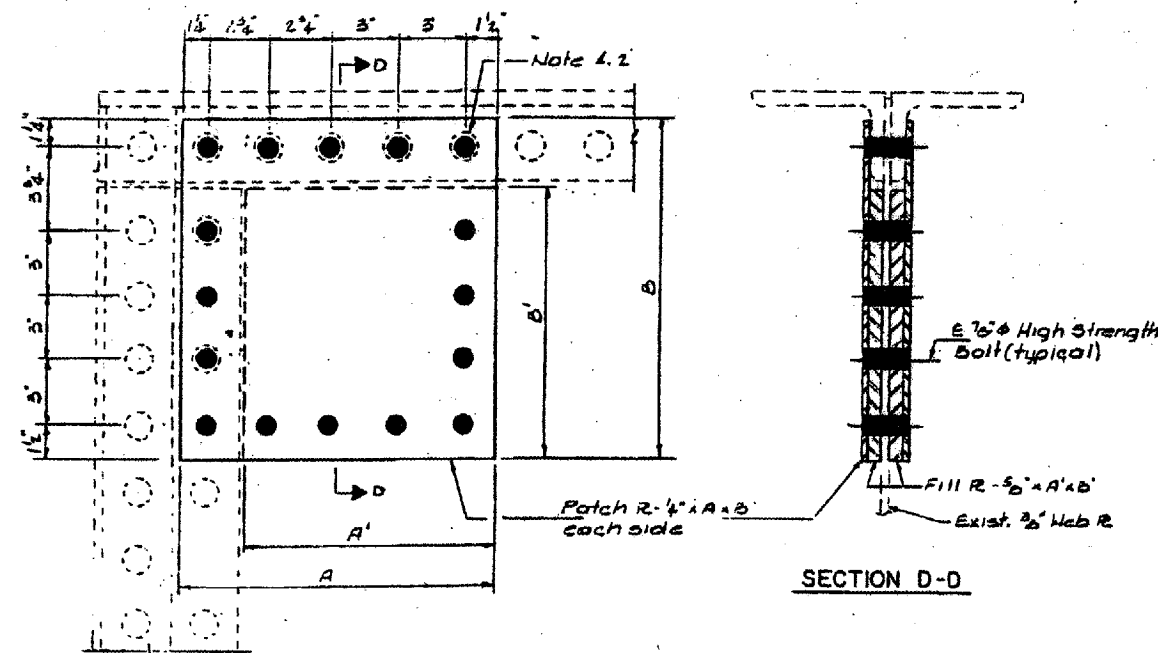


REPAIR DETAIL - TYPE 1A

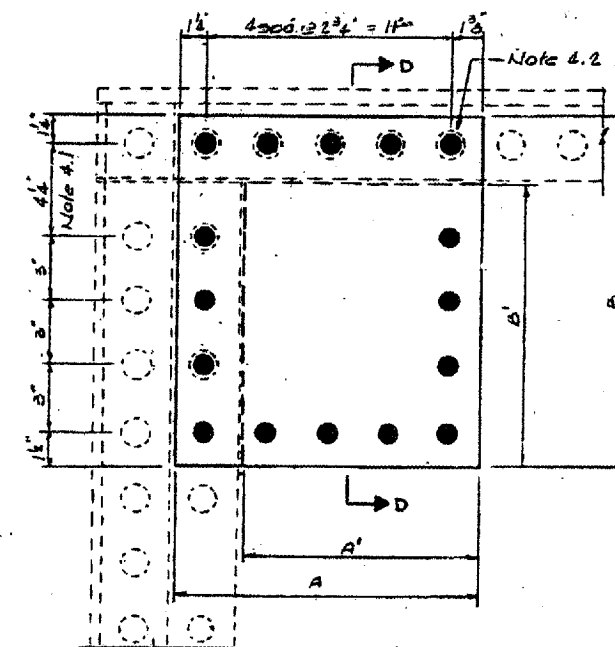


REPAIR DETAIL - TYPE 3

Note: Remove existing stiffener prior to installing new stiffener. Cost of removal shall be incidental to Furnishing & Erecting Structural Steel.



REPAIR DETAIL - TYPE 2



REPAIR DETAIL - TYPE 2A

NOTES:

- 4.1 Contractor to field verify this dimension prior to fabrication.
- 4.2 Remove existing 3/8\"/>

May 7 19 94
 EXAMINED *J. E. Adams*
 ENGINEER OF STRUCTURAL DIVISION
 PASSED

BRIDGE NO. 1
 STRUCTURE 002-0005
 FOR INFORMATION ONLY

ILLINOIS DEPARTMENT OF TRANSPORTATION
 APPROACH GIRDER REPAIRS
 THE OLD CAIRO BRIDGE
 OVER MISSISSIPPI RIVER
 BRIDGE REPAIRS
 F.A.U.S. RTE. 9811 (U.S. 60 & 62)
 S.B.I. 150 SECTION 1380-BR
 ALEXANDER CO. IL. MISSISSIPPI CO. MO.
 STATION 28+13.08
 STRUCTURE NO. 002-0005