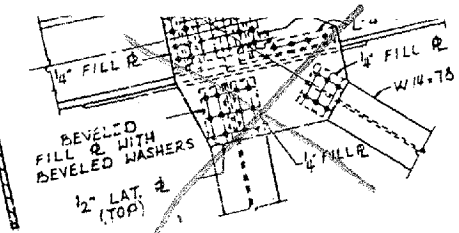
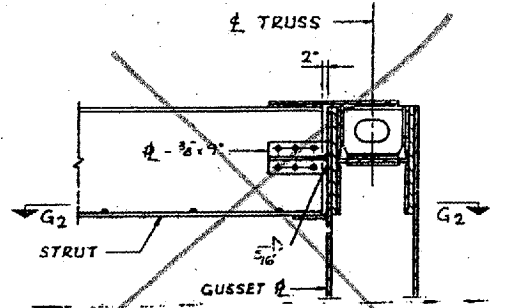


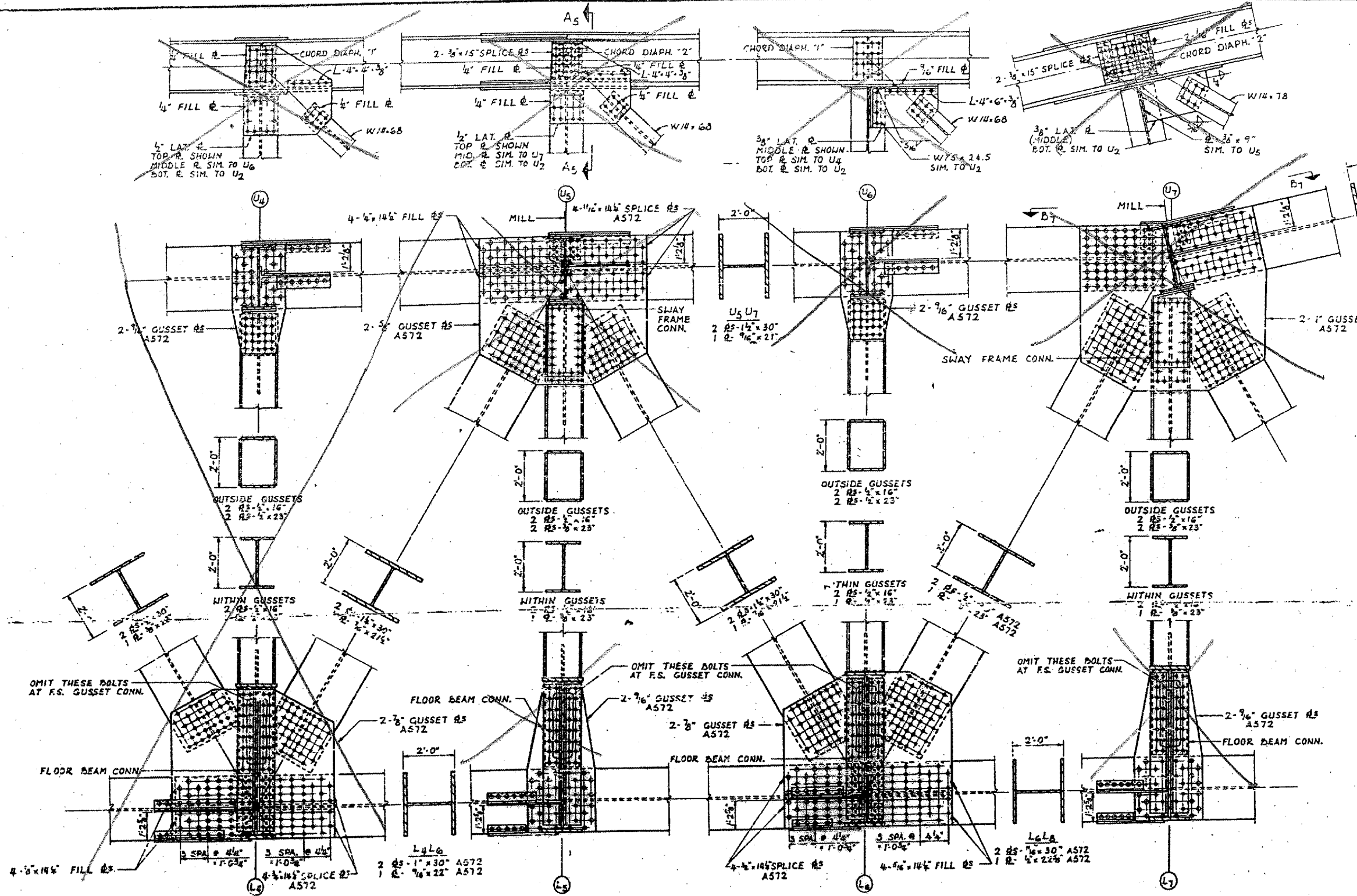
CONTRACT NO. 98940  
 ROUTE FAI-57  
 (02-1B-1) P1  
 ALEXANDER COUNTY  
 SHEET 7 OF 67



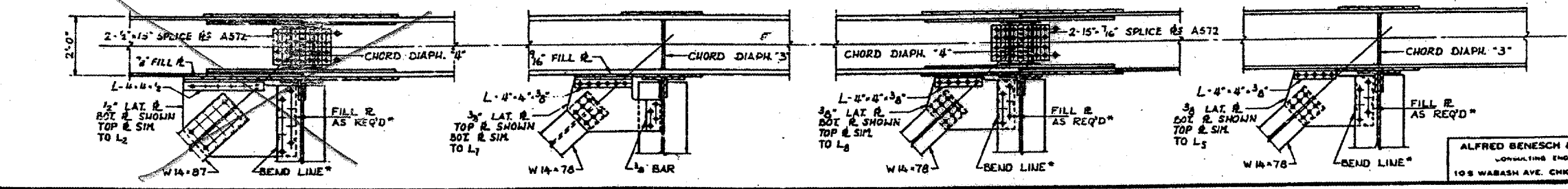
SECTION B7-B7



SECTION A5-A5  
 SWAY FRAME CONNECTION VERTICAL  
 AND DIAGONAL TRUSS MEMBERS NOT SHOWN



BRIDGE NO. 1  
 STRUCTURE NO. 002-0022  
 FOR INFORMATION ONLY



TRUSS DETAILS - L4 TO L7 & U4 TO U7  
 F.A.I. RTE. 57 OVER THE MISSISSIPPI RIVER  
 PROJECT 1-57-9(1) 0  
 SECTION (02-1B-0) F&E  
 ALEXANDER COUNTY, ILLINOIS  
 MISSISSIPPI COUNTY, MISSOURI  
 STA. 1141 + 64.75 TO STA. 1182 + 75.25

ALFRED BENESCH & COMPANY  
 CONSULTING ENGINEERS  
 108 WABASH AVE. CHICAGO, ILLINOIS