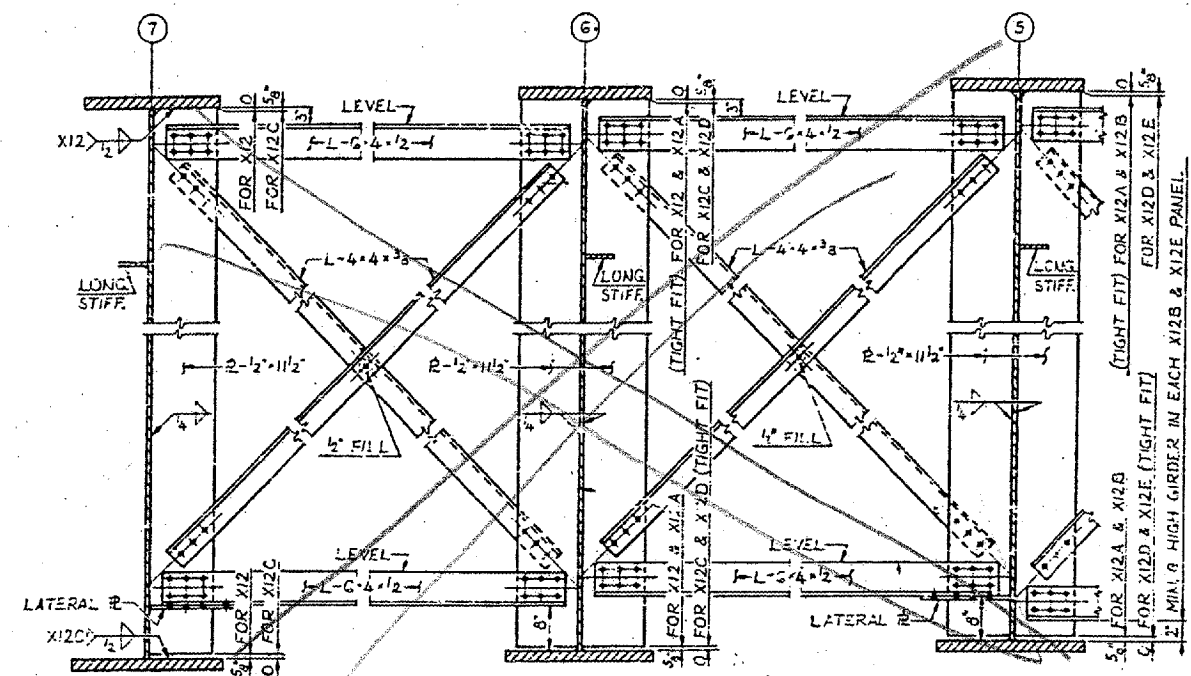
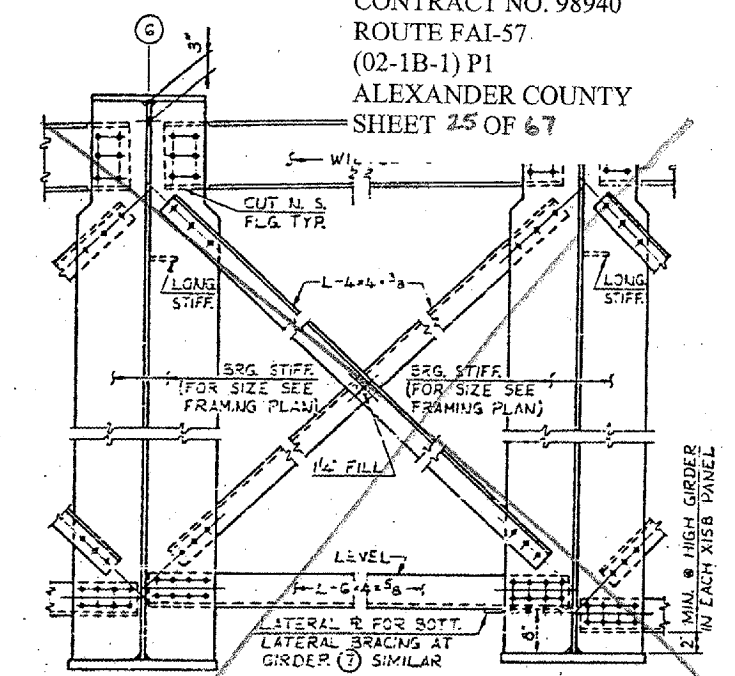


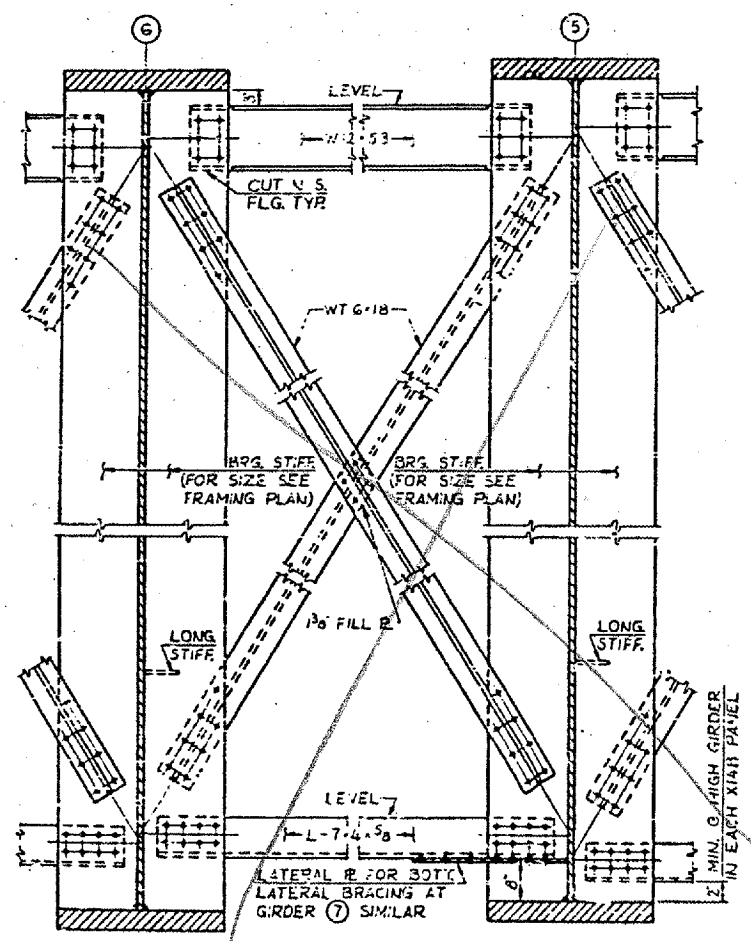
XII XIII XIII B
CROSSFRAME XII, XIII & XIII B
 DETAILS OF XII & XIII B NOT SHOWN OR NOTED, SIMILAR TO XIII



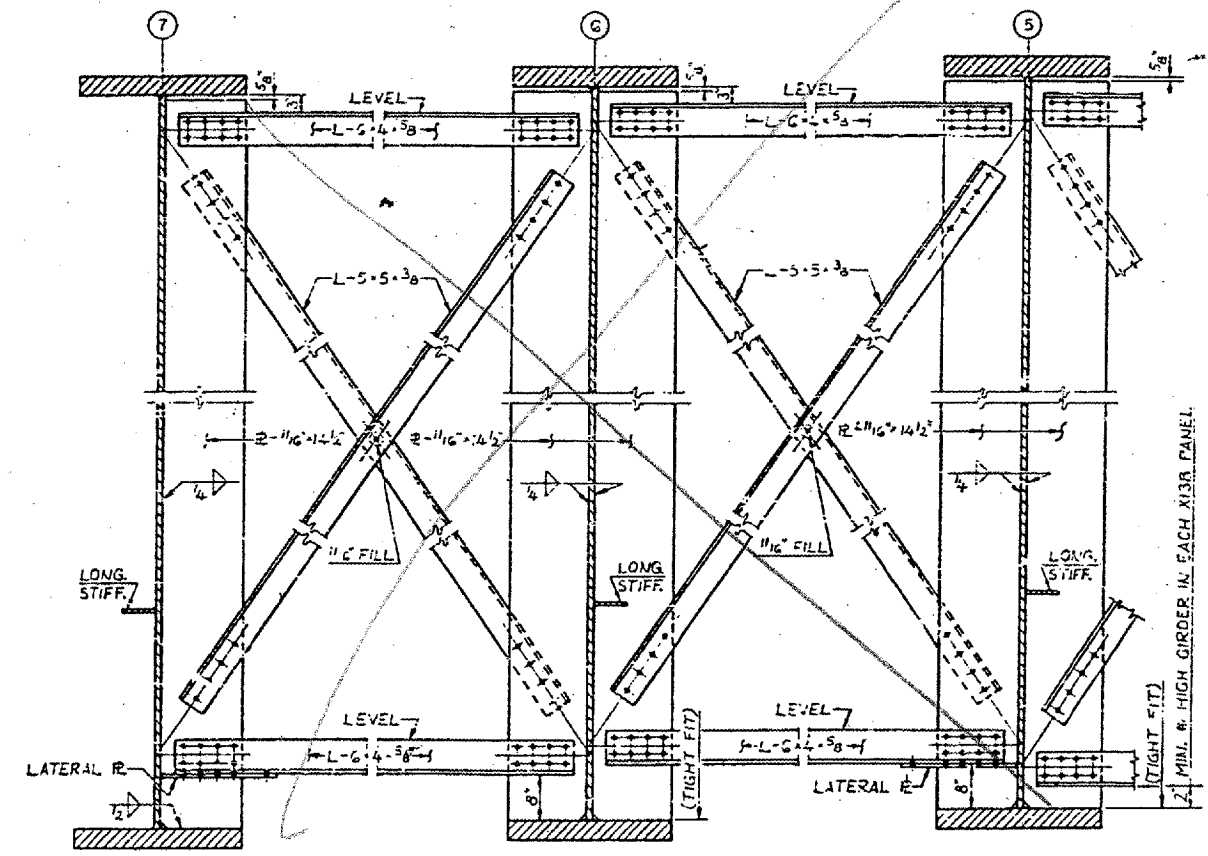
XII & XII C XII A & XII D XII B & XII E
INTERMEDIATE CROSSFRAME XII, XII A, XII B, XII C, XII D & XII E
 DETAILS OF XII C & XII E NOT SHOWN OR NOTED, SIMILAR TO XII A & XII D



XIV XIV A XIV B
CROSSFRAME XIV, XIV A & XIV B
 DETAILS OF XIV & XIV B NOT SHOWN OR NOTED, SIMILAR TO XIV A



XV XV A XV B
CROSSFRAME XV, XV A & XV B
 DETAILS OF XV & XV B NOT SHOWN OR NOTED, SIMILAR TO XV A



XVI XVI A XVI B
INTERMEDIATE CROSSFRAME XVI, XVI A & XVI B
 DETAILS OF XVI B NOT SHOWN OR NOTED, SIMILAR TO XVI A

NOTES:
 ALL MATERIAL ASTM A36 UNLESS NOTED.
 ALL FASTENERS SHALL BE 7/8" ASTM A325 HIGH STRENGTH BOLTS UNLESS NOTED.

BRIDGE NO. 1
 STRUCTURE NO. 002-0022
 FOR INFORMATION ONLY

STEEL DETAILS - SPANS 8A AND 9A
 F. A. I. RTE. 57 OVER THE MISSISSIPPI RIVER
 PROJECT 1-57-9(5)0
 SECTION (02-1B-1)D
 ALEXANDER COUNTY, ILLINOIS
 MISSISSIPPI COUNTY, MISSOURI
 STA. 1141 + 84.75 TO STA. 1182 + 75.25