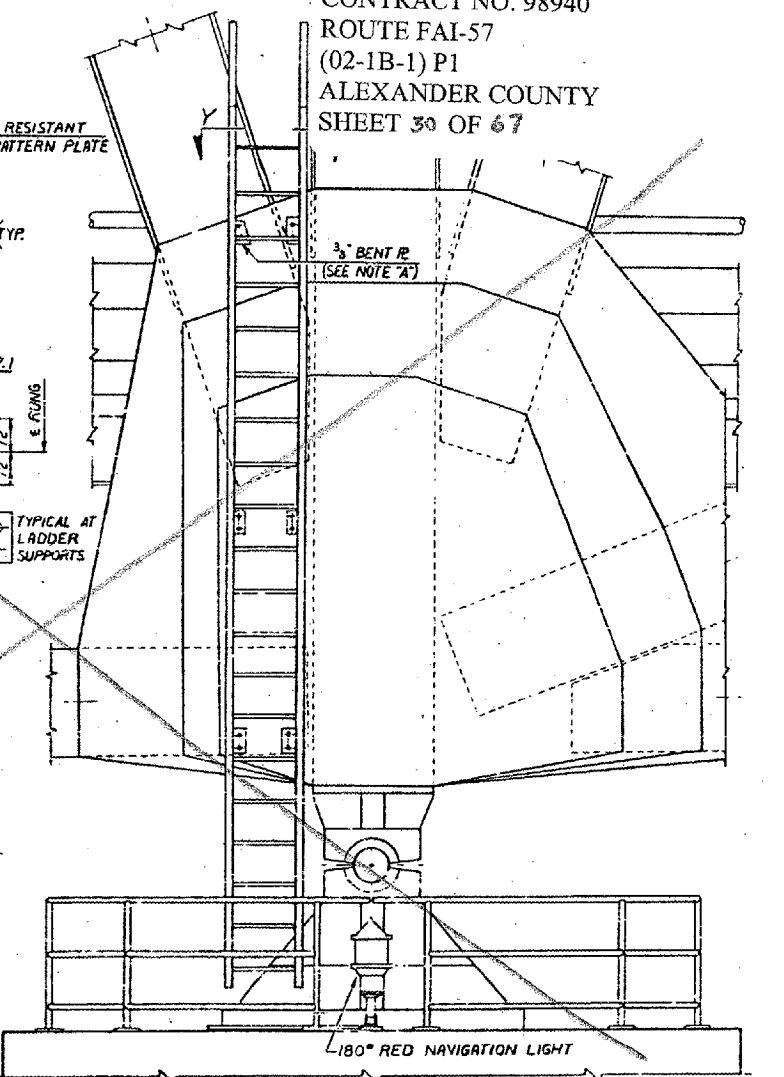
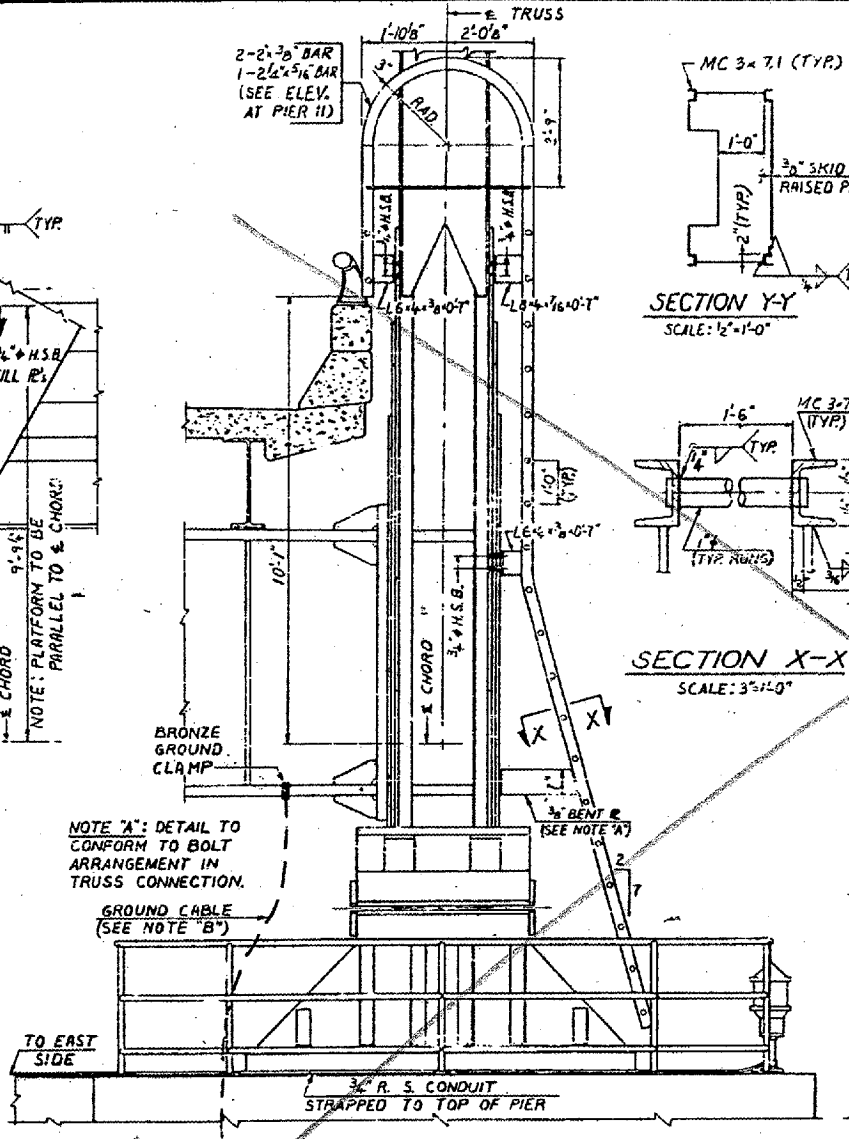
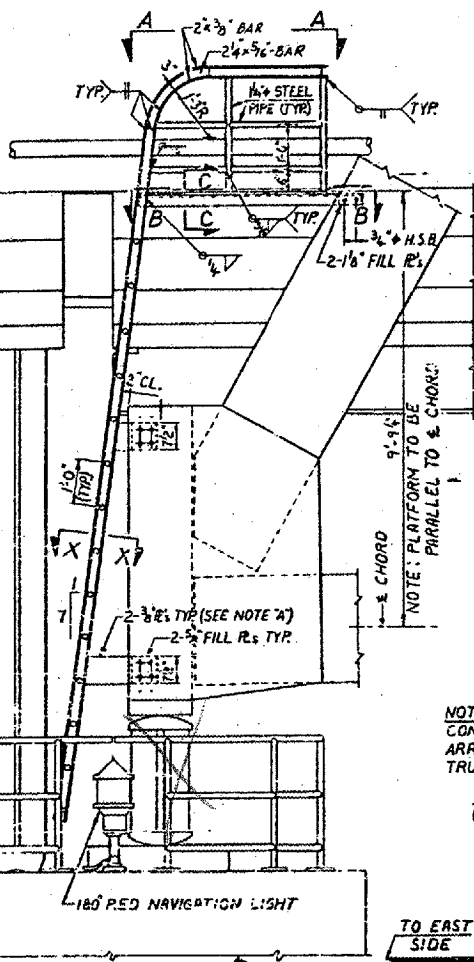
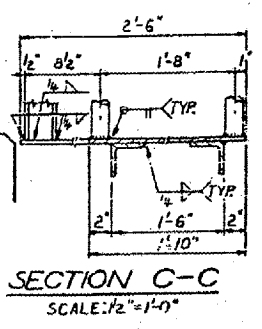
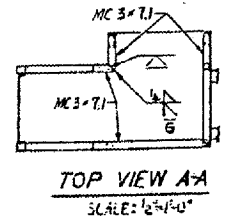
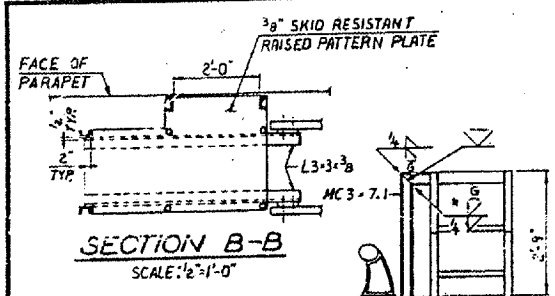
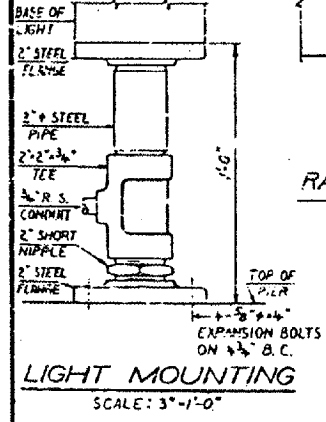
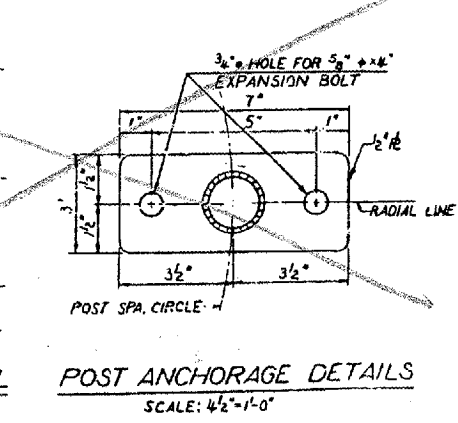
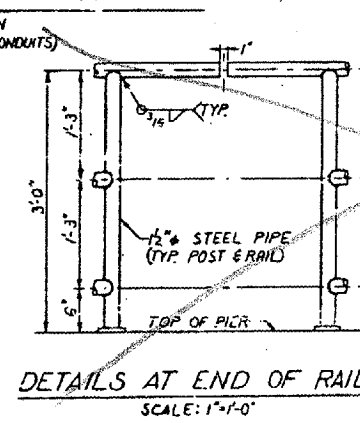
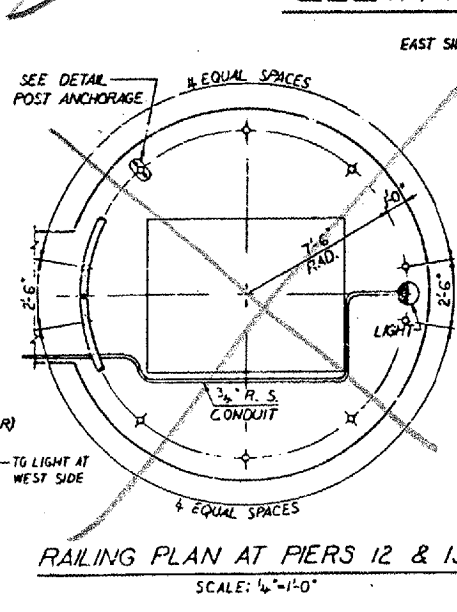
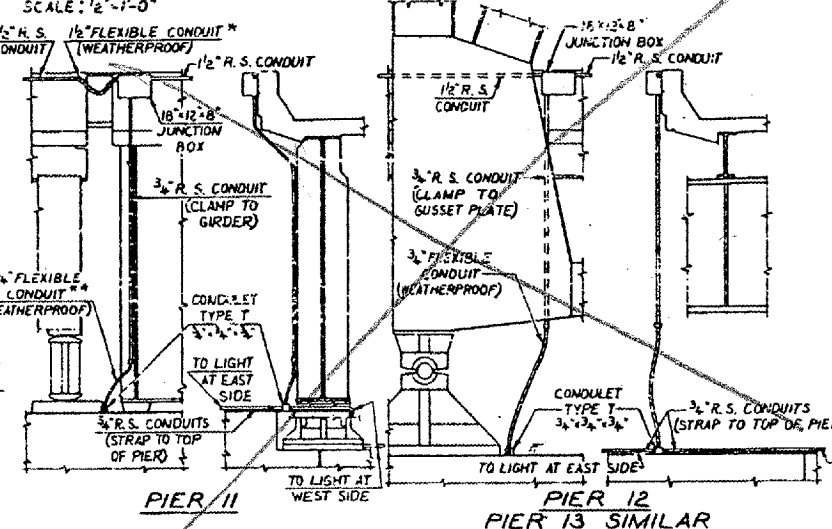
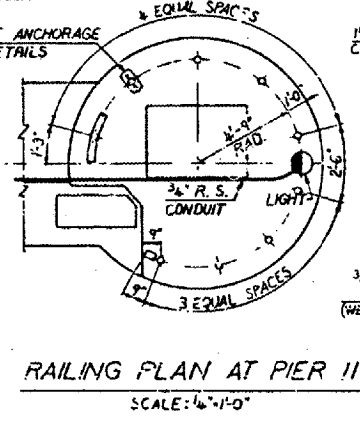


CONTRACT NO. 98940
 ROUTE FAI-57
 (02-1B-1) P1
 ALEXANDER COUNTY
 SHEET 30 OF 67



NOTE "B": CONTRACTOR FOR SECTION (02-1B-1)B WILL FURNISH & INSTALL GROUND CABLES AT PIERS 11, 12, 13 & 14 AS SHOWN ON SHTS. 68, 69, 70 & 71. CONTRACTOR FOR SECTION (02-1B-1)D SHALL CONNECT GROUND CABLES TO FLOOR BEAMS.



BRIDGE NO. 1
 STRUCTURE NO. 002-0022
 FOR INFORMATION ONLY

* MAX. HORIZONTAL MOVEMENT BETWEEN ENDS = 1'-10"
 ** MAX. HORIZONTAL MOVEMENT BETWEEN ENDS = 7"

NOTE: AT PIER 14 PROVIDE LADDERS & RAILINGS

PIER LIGHT, LADDER & RAILING DETAILS
 F. A. I. RTE. 57 OVER THE MISSISSIPPI RIVER
 PROJECT 1-57-9(10)
 SECTION (02-1B-1)F&E
 ALEXANDER COUNTY, ILLINOIS
 MISSISSIPPI COUNTY, MISSOURI
 STA. 1141 + 84.75 TO STA. 1182 + 75.25