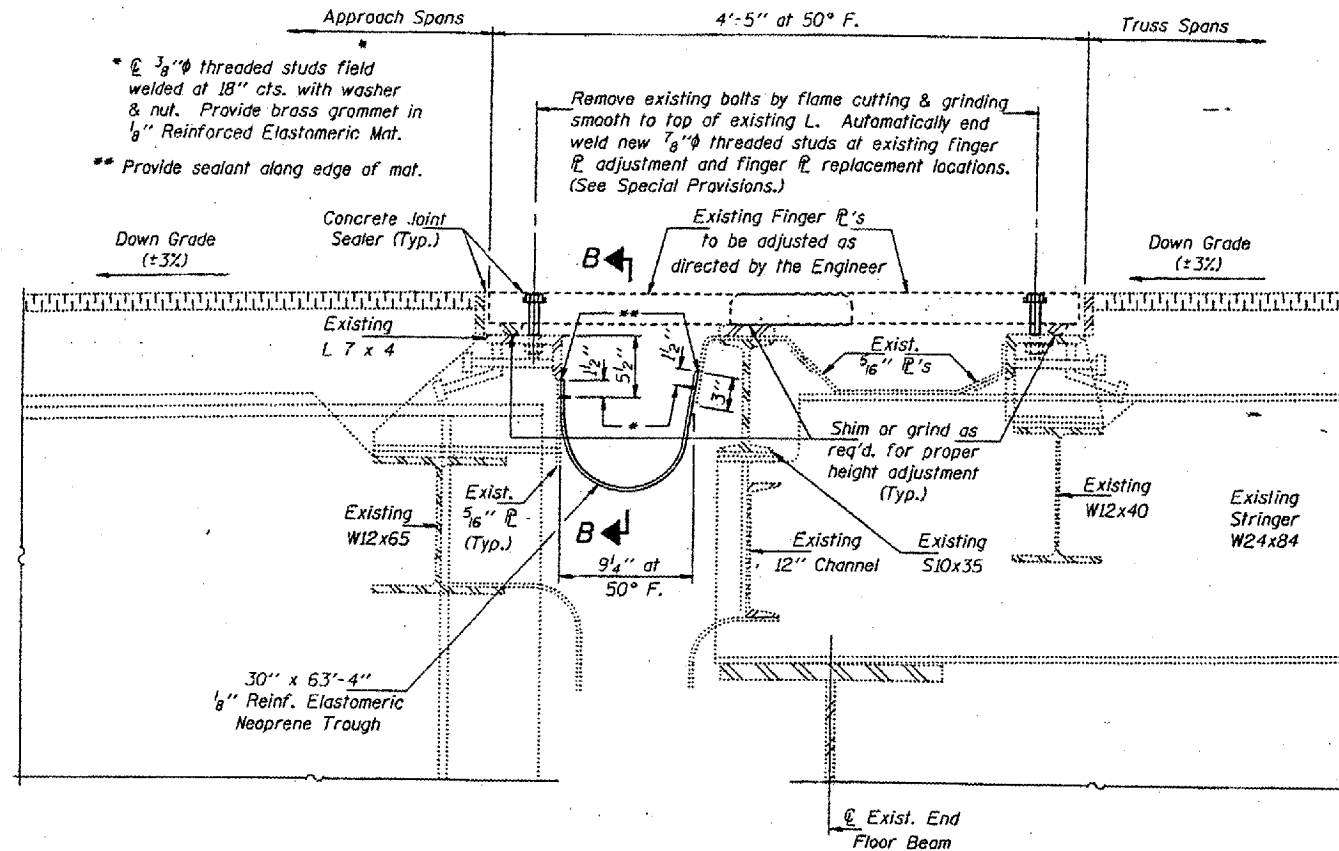


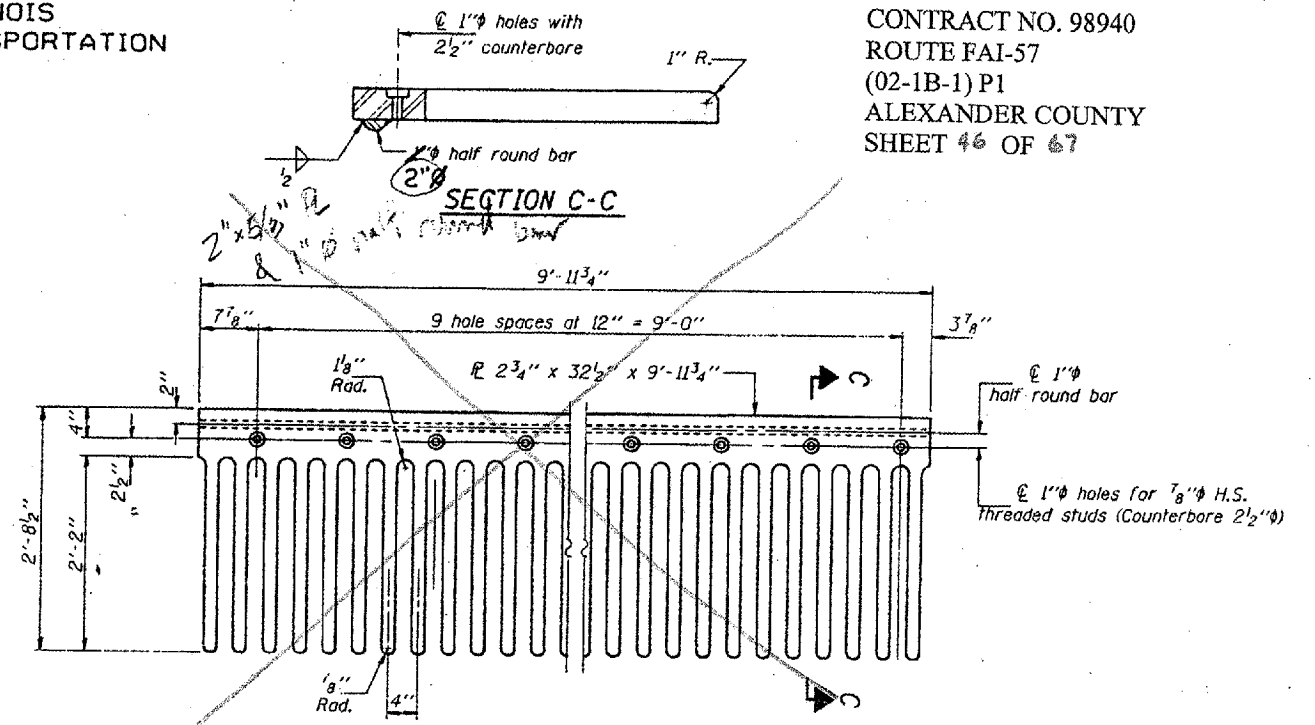
STATE OF ILLINOIS
DEPARTMENT OF TRANSPORTATION

CONTRACT NO. 98940
ROUTE FAI-57
(02-1B-1) P1
ALEXANDER COUNTY
SHEET 46 OF 67



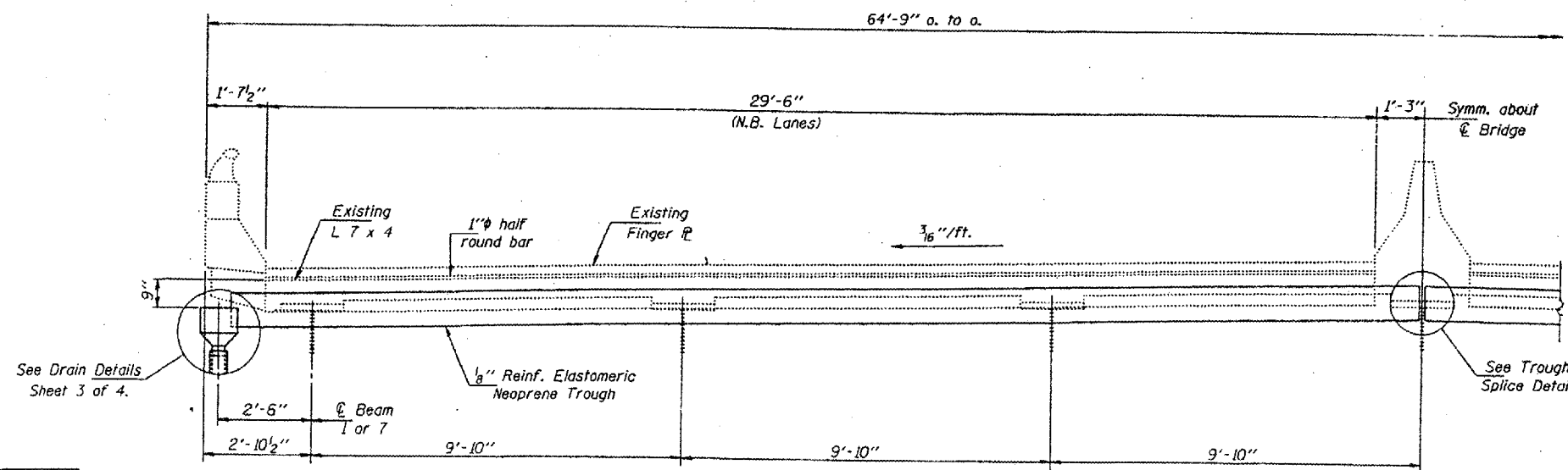
SECTION A-A

Pier II shown; Pier 14 similar

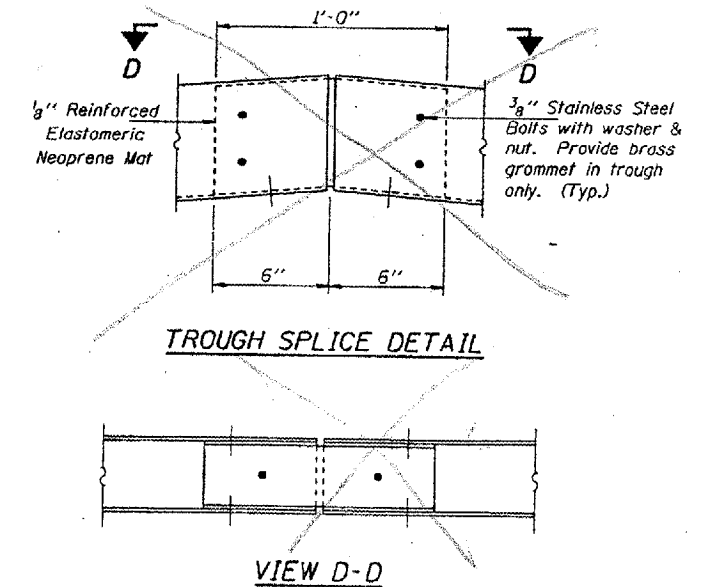


FINGERPLATE REPLACEMENT DETAIL

Req'd.: One (1) at Pier II, center section of N.B. Lane
Note: Field measure to verify dimensions before fabricating.



SECTION B-B



TROUGH SPLICE DETAIL

VIEW D-D

DESIGNED	KPS	AUGUST 21	1996
CHECKED	NJS	EXAMINED	<i>Joseph E. Adams</i>
DRAWN	D-Herbert	PASSED	ENGINEER OF STRUCTURAL SERVICES
CHECKED	NJS KPS		ENGINEER OF BRIDGES AND STRUCTURES

BRIDGE NO. 1
STRUCTURE NO. 002-0022
FOR INFORMATION ONLY

BRIDGE REPAIRS
F.A.I. 57 OVER MISSISSIPPI RIVER
SEC. 02-1B-1
ALEXANDER COUNTY
S.N. 002-0022