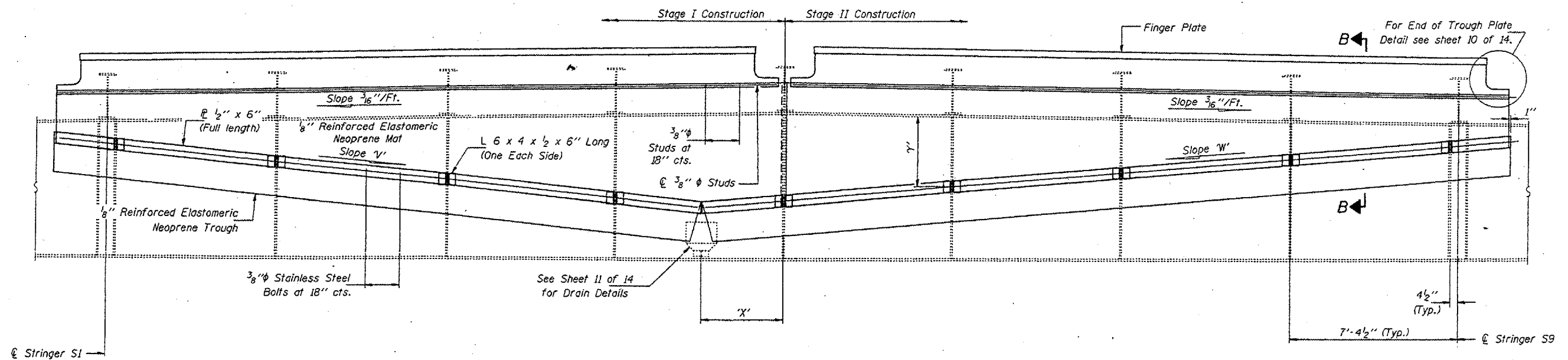


**ELEVATION - APPROACH SPAN**  
(Looking North)



**ELEVATION - TRUSS SPAN**  
(Looking South)

DESIGNED	P.S.J.	FEBRUARY 4, 2002
CHECKED	A.T.H.	EXAMINED <i>John A. Morris</i>
DRAWN	John F. Schneller Jr.	PASSED
CHECKED	P.S.J. A.T.H.	ENGINEER OF BRIDGES AND STRUCTURES

Notes:  
Showing Pier 11; Pier 14 similar.  
For Section B-B see sheet 6 of 14.  
For slopes 'V' & 'W' and dimensions 'X' & 'Y', see Sheet 10 of 14.  
Dimension 'Y' is measured from the underside of the top flange of the girders (Approach Spans) or Floor Beam (Truss Spans) to the center of the connection for the  $\frac{1}{2}$ " x 6" PL.

BRIDGE NO. 1  
STRUCTURE NO. 002-0022  
FOR INFORMATION ONLY

**TROUGH DETAILS - PIER 11 & 14**  
**F.A.I. 57 OVER MISSISSIPPI RIVER**  
**ALEXANDER COUNTY**  
**S.N. 002-0022**