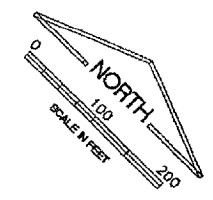


IMAGE FILES

UN044 K:\Champaign\0505903\Draw\Sheets\FILE: 04_SITEPLAN.dwg
 LAYOUT: Layout1
 UPDATE BY: jfrank
 SURVEY BOOK #
 DATE: Thu 11/17/05 8:27am
 XREF DWG: CAALLY.dwg
 C:\info.dwg
 tb.dwg
 EP_Base.DWG
 EP-Topo.dwg



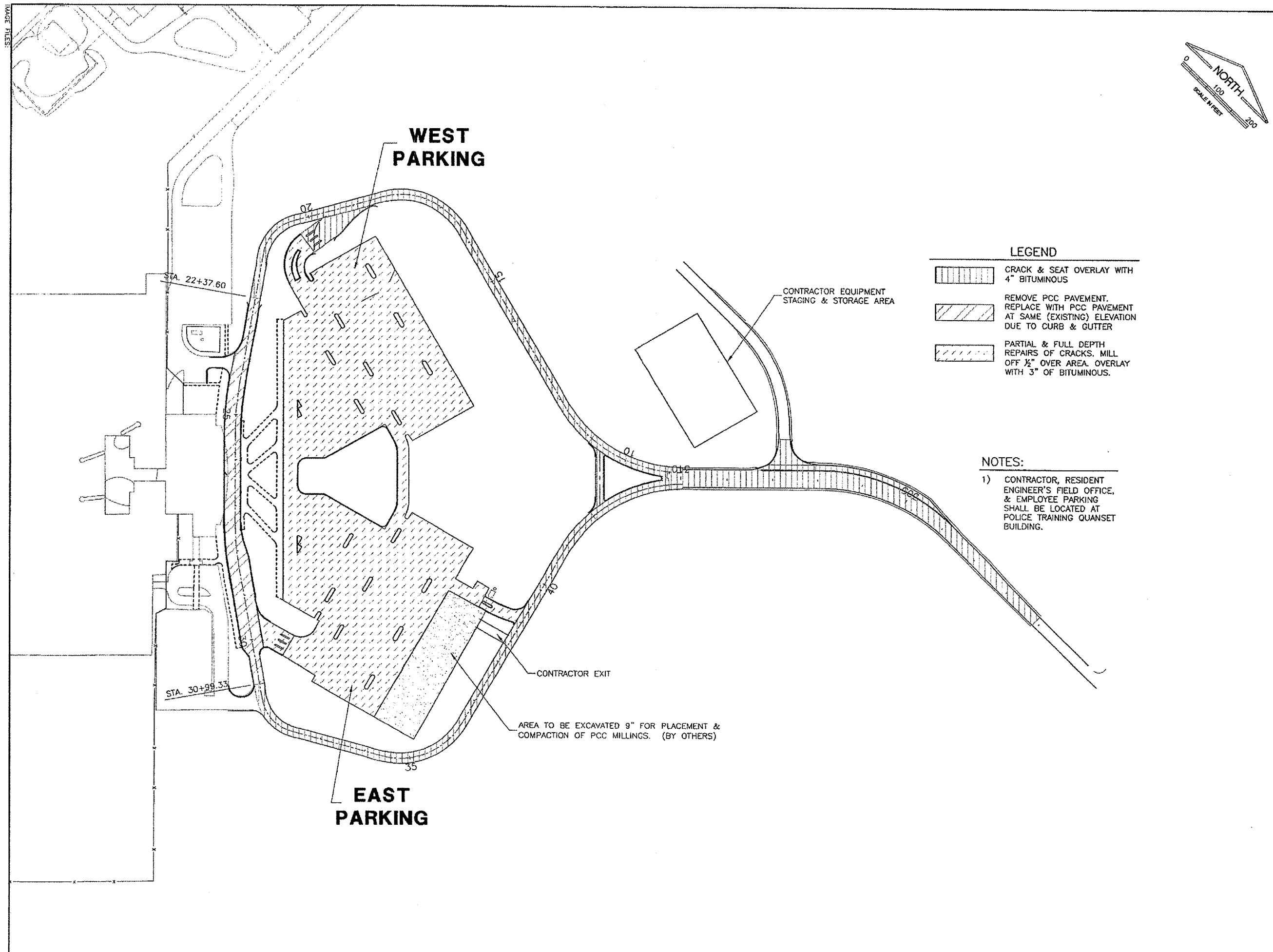
REVISIONS		
NUMBER	BY	DATE

0 1 2
 THIS BAR IS EQUAL TO 2'
 AT FULL SCALE (34X22).

**UNIVERSITY OF ILLINOIS
 WILLARD AIRPORT
 REHABILITATE TERMINAL PARKING AREA
 PROJECT SITE PLAN**

© Copyright CMT, Inc.
CMT
 CRAWFORD, MURPHY & TILLY, INC.
 CONSULTING ENGINEERS
 License No. 984-00613

DESIGN BY:	CMT
DRAWN BY:	CMT
CHECKED BY:	JEF
APPROVED BY:	SMH
DATE:	11/11/05
JOB No:	0505903
IL PROJECT:	CM-3473
SHEET 04 OF 45 SHEETS	



LEGEND

- CRACK & SEAT OVERLAY WITH 4" BITUMINOUS
- REMOVE PCC PAVEMENT. REPLACE WITH PCC PAVEMENT AT SAME (EXISTING) ELEVATION DUE TO CURB & GUTTER
- PARTIAL & FULL DEPTH REPAIRS OF CRACKS. MILL OFF 1/2" OVER AREA. OVERLAY WITH 3" OF BITUMINOUS.

NOTES:

- 1) CONTRACTOR, RESIDENT ENGINEER'S FIELD OFFICE, & EMPLOYEE PARKING SHALL BE LOCATED AT POLICE TRAINING QUANSET BUILDING.