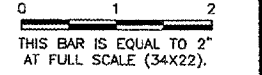
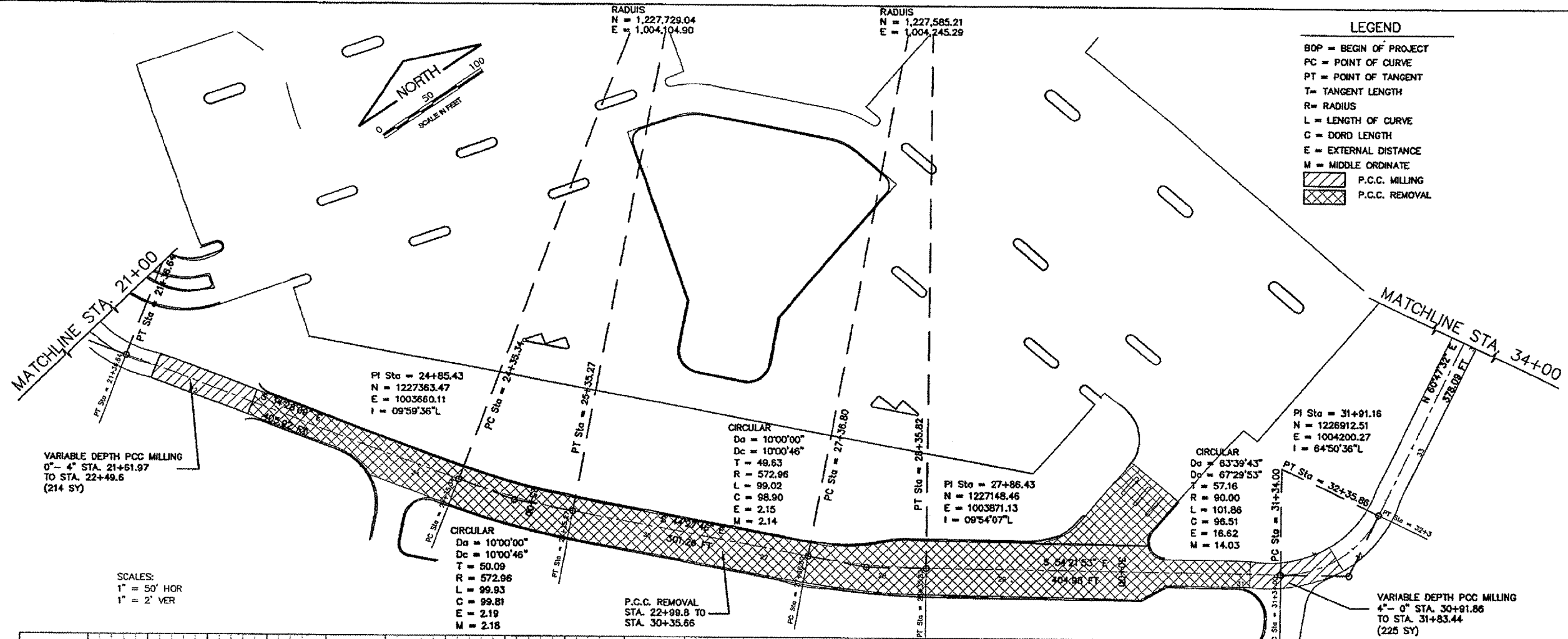


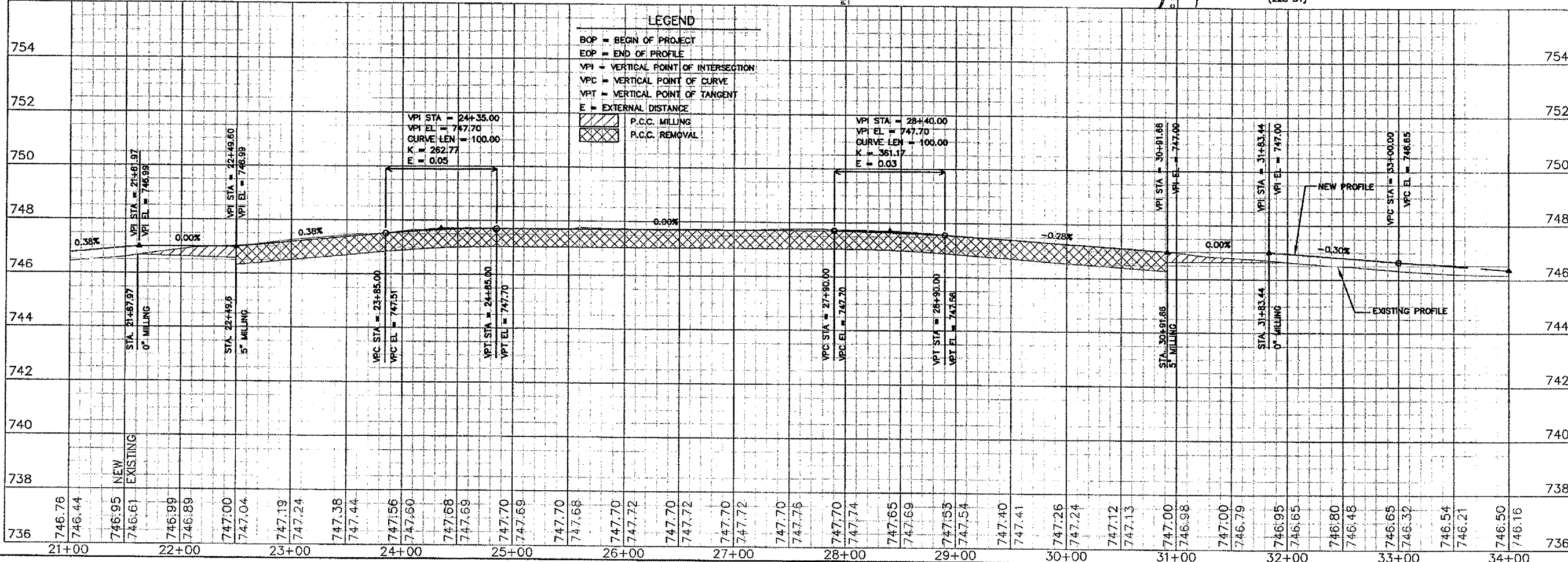
REVISIONS		
NUMBER	BY	DATE



- LEGEND**
- BOP = BEGIN OF PROJECT
  - PC = POINT OF CURVE
  - PT = POINT OF TANGENT
  - T = TANGENT LENGTH
  - R = RADIUS
  - L = LENGTH OF CURVE
  - C = DORD LENGTH
  - E = EXTERNAL DISTANCE
  - M = MIDDLE ORDINATE
  - P.C.C. MILLING
  - P.C.C. REMOVAL



SCALES:  
 1" = 50' HOR  
 1" = 2' VER



- LEGEND**
- BOP = BEGIN OF PROJECT
  - EOP = END OF PROFILE
  - VPI = VERTICAL POINT OF INTERSECTION
  - VPC = VERTICAL POINT OF CURVE
  - VPT = VERTICAL POINT OF TANGENT
  - E = EXTERNAL DISTANCE
  - P.C.C. MILLING
  - P.C.C. REMOVAL

**UNIVERSITY OF ILLINOIS  
 WILLARD AIRPORT**

**REHABILITATE TERMINAL PARKING AREA**

**RING ROAD PLAN & PROFILE  
 STA. 21+00 TO STA. 34+00**

**CMT**  
 CRAWFORD, MURPHY & TILLY, INC.  
 CONSULTING ENGINEERS  
 License No. 194-000618

DESIGN BY:	CBG
DRAWN BY:	CMT
CHECKED BY:	JEF
APPROVED BY:	SMH
DATE:	11/11/05
JOB No:	0505903
IL PROJECT:	CM-3473