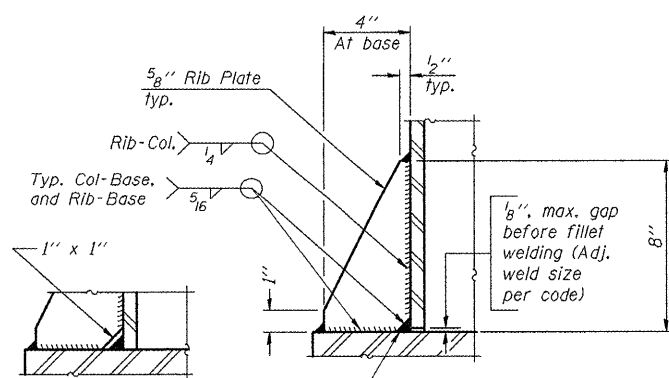
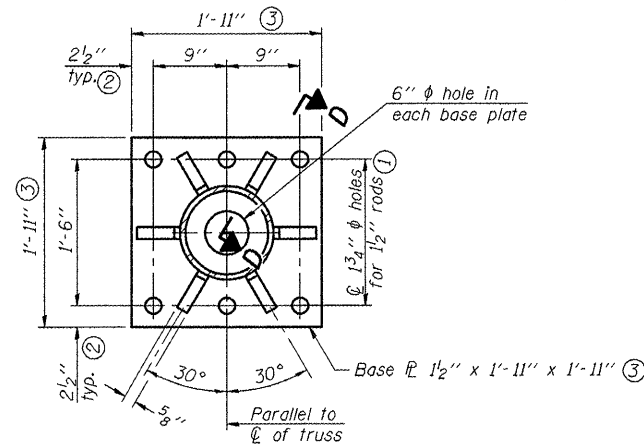
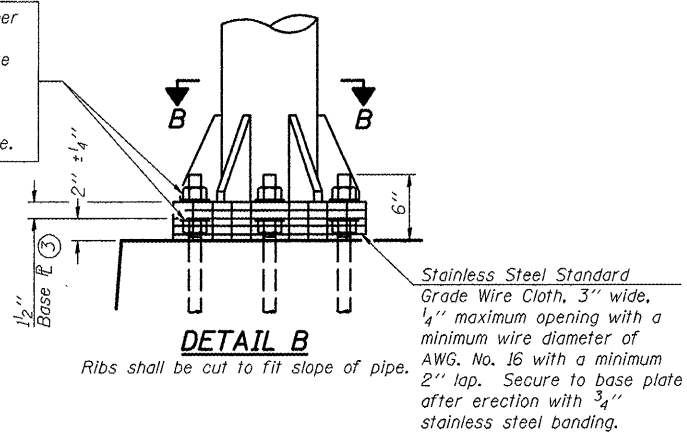
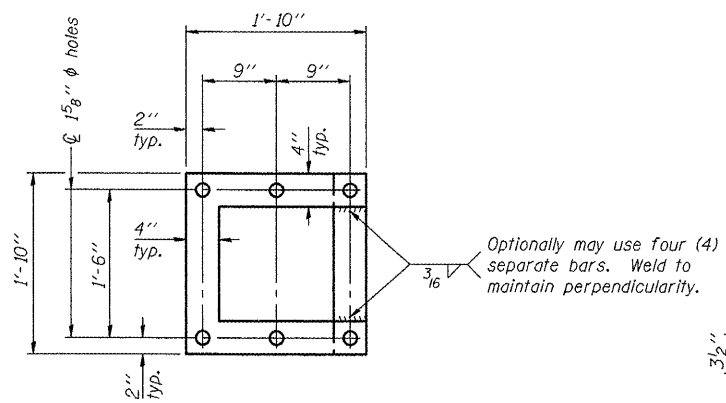


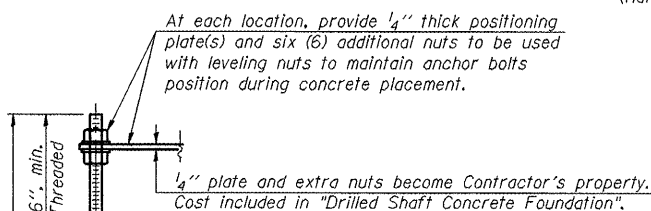
Hexagon locknut and washer (top), leveling nut and washer (bottom). Galvanize per AASHTO M232. Nuts shall each be tightened against base plate with 200 lb.-ft. minimum torque.



** Alternate detail if welding col. to base plate first, then snip inside corner of ribs. Terminate weld on rib 1/4" from snip.



POSITIONING PLATE(S)



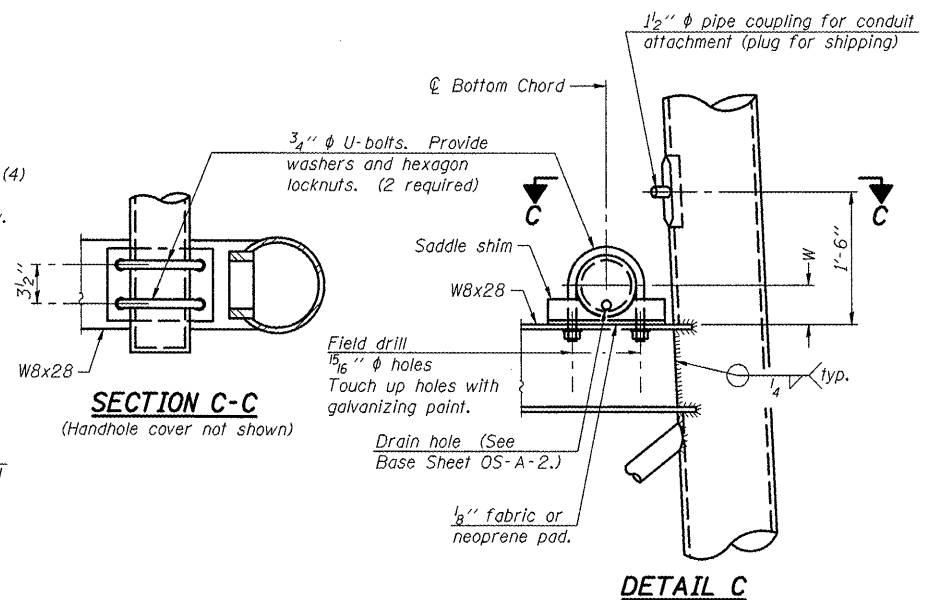
ANCHOR ROD DETAIL

Anchor rods shall conform to ASTM F1554 Grade 105 Galvanize upper 12" minimum per AASHTO M232. No welding shall be permitted on rods.

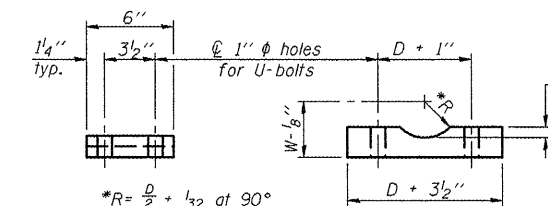
**TYPE III-A TRUSS
12" ϕ PIPE SUPPORT FRAME DETAILS**

Notes:
For Type III-A Truss spans greater than 150 ft. and up to 160 ft.:

- ① 1 3/4" ϕ rod, 2" ϕ holes
- ② 2 3/4" edge distance
- ③ Base ϕ 1 5/8" x 1'-11 1/2" x 1'-11 1/2"



SECTION C-C
(Handhole cover not shown)



Truss Chord Nominal Dia.	a
7"	1"
8 1/2"	1 1/4"
9"	1 3/8"

SADDLE SHIM DETAIL
ASTM B26 Alloy 356-F
or
ASTM B209 Alloy 6061-T651
(4 required per sign truss)

OS4-A-8aA 1-20-11

FILE NAME =	USER NAME = ceer-lockjd	DESIGNED - JAL	REVISED -
et:\pwwork\pwwdot\ceer-lockjd\0266557-046179-sht-detai1.dgn		DRAWN -	REVISED -
PLOT SCALE = 40.0000' / 1"		CHECKED -	REVISED -
PLOT DATE = 10/7/2011		DATE - 04/26/11	REVISED -

STATE OF ILLINOIS
DEPARTMENT OF TRANSPORTATION

OVERHEAD SIGN STRUCTURES SUPPORT FRAME FOR TYPE III-A ALUMINUM TRUSS	
SCALE:	SHEET NO. 10 OF 24 SHEETS STA. TO STA.

*VARIOUS COUNTIES **D-5 OVD SIN STR REPL 2012-06				
F.A. RTE.	SECTION	COUNTY	TOTAL SHEETS	SHEET NO.
*	**	Various	178	77
CONTRACT NO. 46179				
ILLINOIS FED. AID PROJECT				