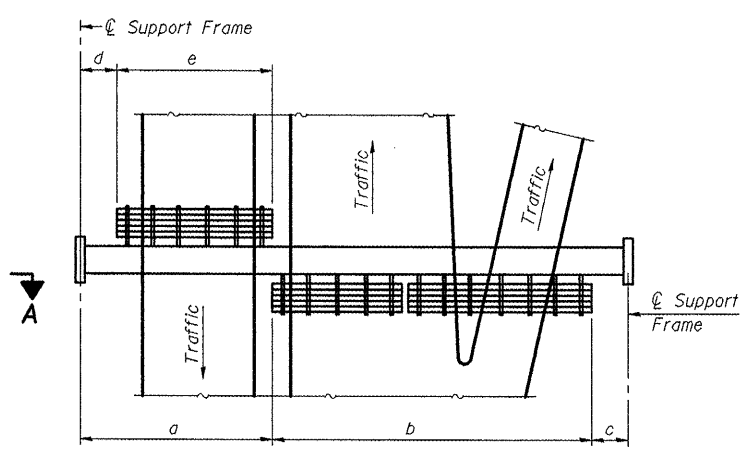


**TYPICAL FRONT ELEVATION**  
 With lights and handrail omitted for clarity.  
 For Section B-B, see Base Sheet OS-A-10.



**PLAN WALKWAY AND HANDRAIL SKETCH**  
 (Road plan beneath truss varies)

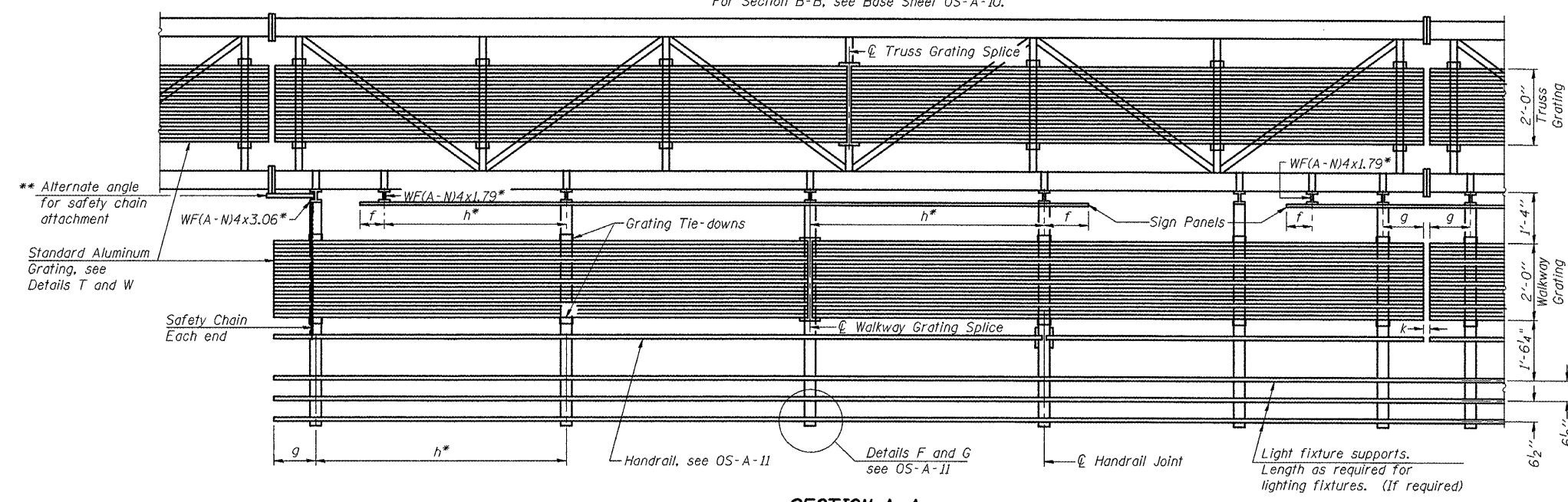
**BRACKET TABLE**

WF(A-N)4x1.79 or WF(A-N)4x3.06 ASTM B308, Alloy 6061-T6		
Sign Width		Number Brackets Required
Greater Than	Less Than or Equal To	
	8'-0"	2
8'-0"	14'-0"	3
14'-0"	20'-0"	4
20'-0"	26'-0"	5
26'-0"	32'-0"	6

- Notes:
- Space walkway brackets WF(A-N)4x3.06 and sign brackets WF(A-N)4x1.79 for efficiency and within limits shown:
  - f = 12" maximum, 4" minimum (End of sign to center of nearest bracket)
  - g = 12" maximum, 4" minimum (End of walkway grating to center of nearest support bracket)
  - h = 6'-0" maximum (center to center of sign and/or walkway support brackets, WF(A-N)4x1.79 or WF(A-N)4x3.06)
  - k = 2" maximum gap between adjacent walkway grating sections and handrail ends

\*\* If walkway bracket at safety chain location is behind sign, add angle to bracket, see Alternate Safety Chain Attachment on Base Sheet OS-A-11.

For Details T and W, Section B-B and Grating Splice Details see Base Sheet OS-A-10.  
 For Handrail Details see Base Sheet OS-A-11.



**SECTION A-A**

Handrail and walkway shall span a minimum of three brackets between splices and/or gap joints. Place all sign and walkway brackets as close to panel points as practical. Handrail joints, grating, and light support splices placed as needed.

Structure Number	Station	a	b	c	d	e	Walkway Grating and Handrail Lengths
5 S 057 1074 L134.10	647+84	9'-0"	65'-0"	12'-0"	—	—	65'-0"
5 S 057 1055 R156.20	645+76	28'-0"	71'-0"	23'-0"	—	—	71'-0"
5 S 057 U055 R000.20	71+67	8'-0"	58'-0"	4'-0"	—	—	58'-0"
See also "Sign Truss Mounting Details" Sheets 66 - 68							

Truss grating to facilitate inspection shall run full length (center to center of support frames) ±12" on overhead trusses. Cost of truss grating is included in "Overhead Sign Structure".

Walkway and Truss Grating width dimensions are nominal and may vary ±1/2" based on available standard widths.

OS-A-9

1-20-11

•VARIOUS COUNTIES  
 ••D-5 OVD SIN STR REPL 2012-06