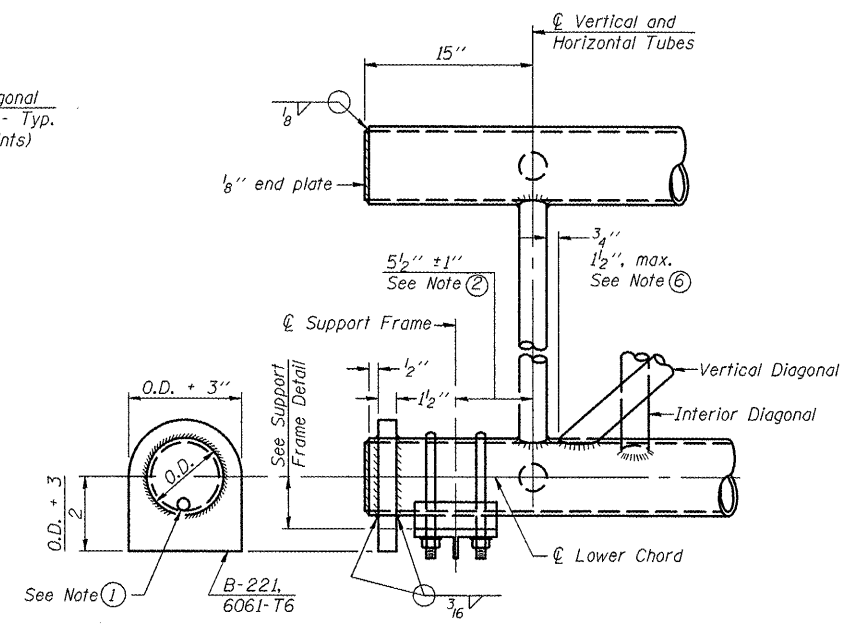
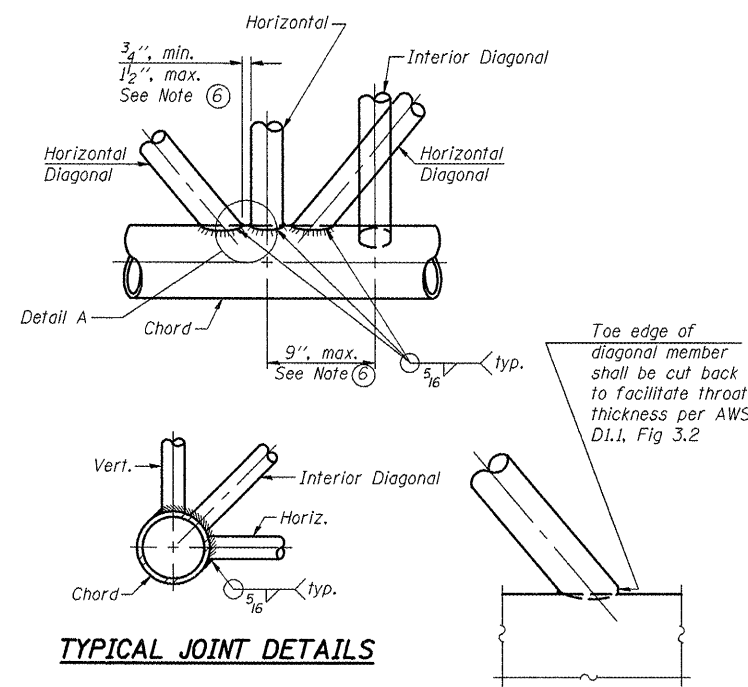


**ELEVATION  
TYPICAL INTERIOR UNIT**  
Even number of panels/interior unit required.

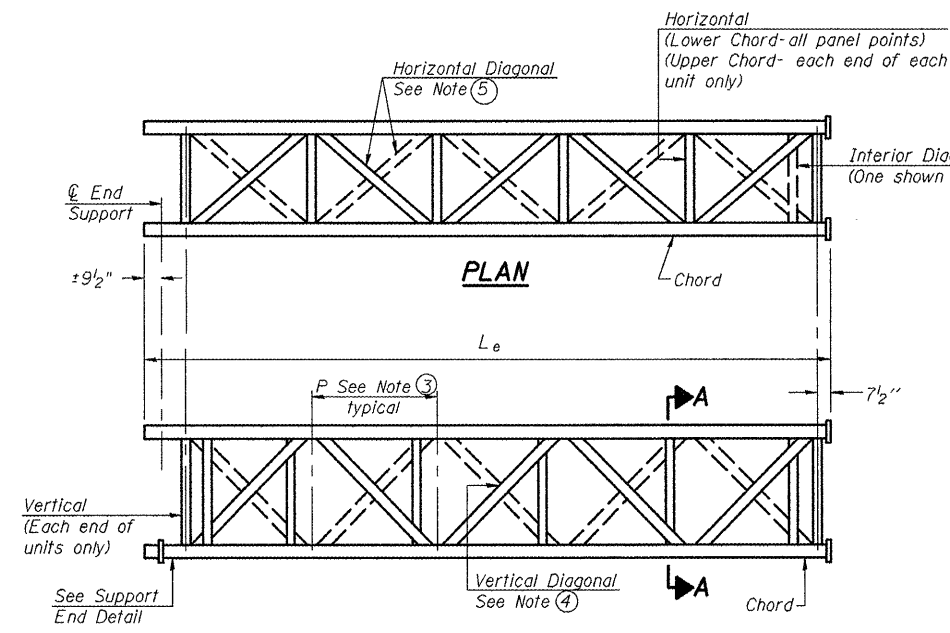


**SUPPORT END DETAIL FOR EXTERIOR UNIT**

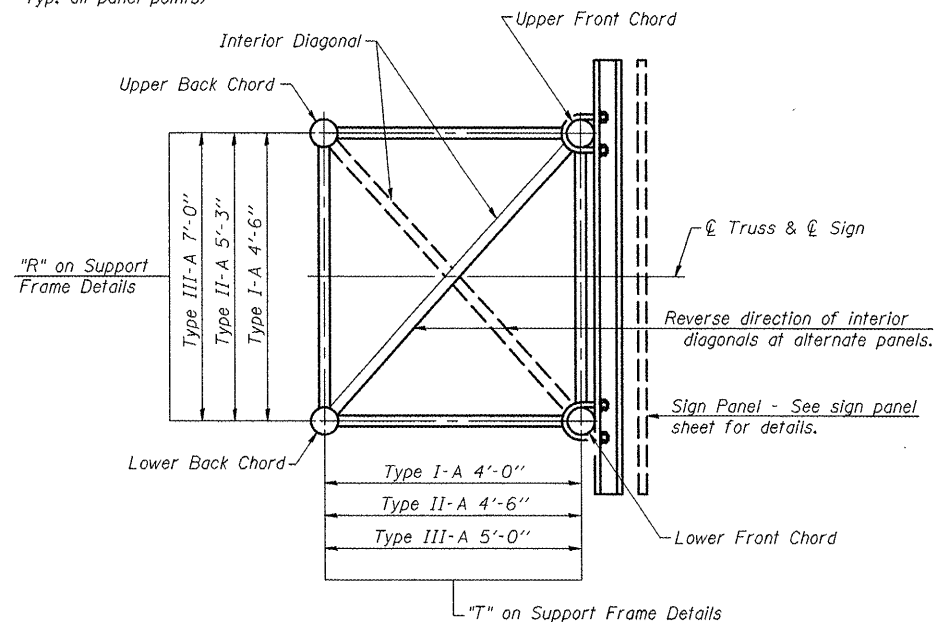


**TYPICAL JOINT DETAILS**

**DETAIL A**



**ELEVATION  
TYPICAL EXTERIOR UNIT**  
Even or odd number of panels/exterior units allowed.



**SECTION A-A**

- ① Contractor may alternatively use standard aluminum drive-fit cap to close end. 1/2"  $\phi$  drain hole in end plate/drive-fit cap. (Typ. at ends of all chords)
- ② 5 1/2" end dimension may vary by  $\pm 1"$  to provide uniform panel spacing (P).
- ③ Panel spacing (P) shall be uniform for entire truss and between 4'-0" and 5'-0" for Type I-A or 4'-0" and 5'-6" for Types II-A and III-A.
- ④ Vertical Diagonals in front and back face shall alternate.
- ⑤ Hidden lines show wind bracing alternates direction between planes of top and bottom chords.
- ⑥ All diagonals shall be detailed for minimum offset from the panel point based on the following. Offset shall be such as to provide a 3/4" minimum to 1 1/2" maximum clearance between any diagonal and any horizontal or vertical member, and to provide clearance for U-bolt connections of signs or walkway brackets.

OS-A-2

1-20-11

FILE NAME =	USER NAME = ceer-lock_jd	DESIGNED - JAL	REVISED -	<b>STATE OF ILLINOIS DEPARTMENT OF TRANSPORTATION</b>	<b>OVERHEAD SIGN STRUCTURES - ALUMINUM TRUSS DETAILS FOR TRUSS TYPES I-A, II-A AND III-A</b>	F.A. RTE.	SECTION	COUNTY	TOTAL SHEETS	SHEET NO.	
ca:\pw\work\pvidot\ceer-lock_jd\0266557-0546179-shr-details.dgn	PLOT SCALE = 40.0000' / 1"	DRAWN -	REVISED -			•	••	Various	178	111	
PLOT DATE = 10/7/2011	DATE = 04/26/11	CHECKED -	REVISED -			CONTRACT NO. 46179					
		REVISOR -	REVISED -			ILLINOIS FED. AID PROJECT					
						SCALE:	SHEET NO. 6 OF 24 SHEETS	STA.	TO STA.		

•VARIOUS COUNTIES  
•D-5 OVD SIN STR REPL 2012-06