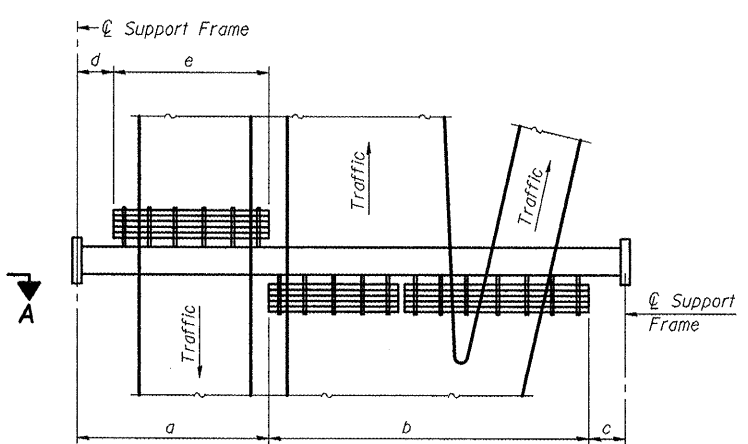


**TYPICAL FRONT ELEVATION**  
With lights and handrail omitted for clarity.  
For Section B-B, see Base Sheet OS-A-10.

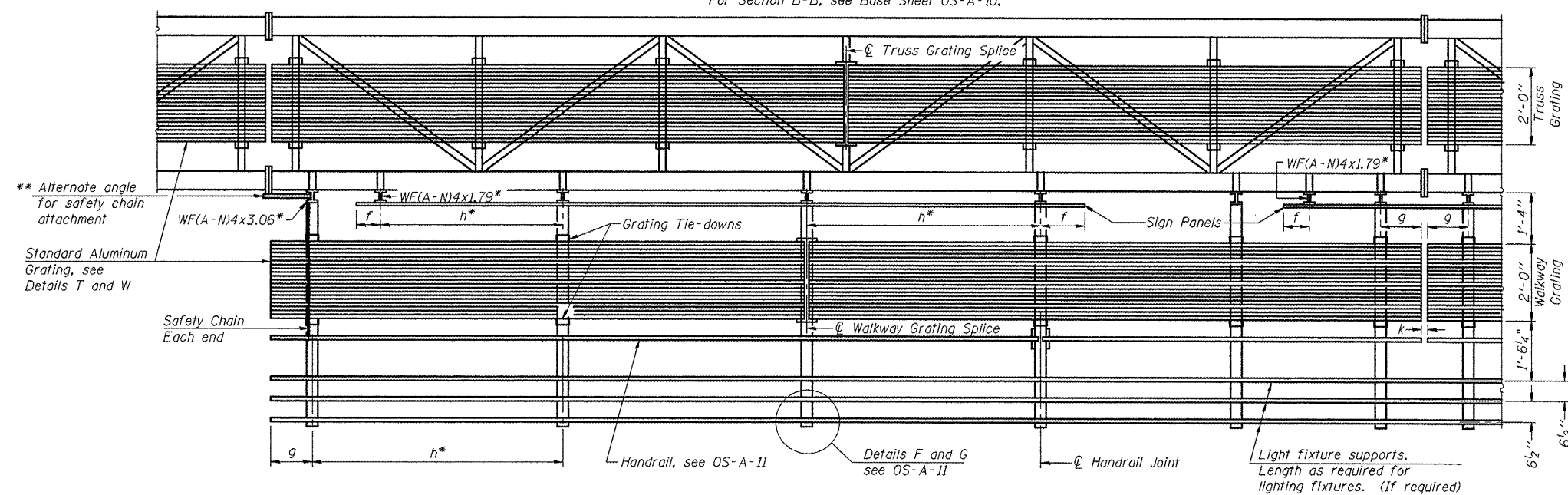


**PLAN WALKWAY AND HANDRAIL SKETCH**  
(Road plan beneath truss varies)

**BRACKET TABLE**

WF(A-N)4x1.79 or WF(A-N)4x3.06 ASTM B308, Alloy 6061-T6		
Sign Width		Number Brackets Required
Greater Than	Less Than or Equal To	
	8'-0"	2
8'-0"	14'-0"	3
14'-0"	20'-0"	4
20'-0"	26'-0"	5
26'-0"	32'-0"	6

- Notes:
- \* Space walkway brackets WF(A-N)4x3.06 and sign brackets WF(A-N)4x1.79 for efficiency and within limits shown:
    - f = 12" maximum, 4" minimum (End of sign to center of nearest bracket)
    - g = 12" maximum, 4" minimum (End of walkway grating to center of nearest support bracket)
    - h = 6'-0" maximum (center to center of sign and/or walkway support brackets, WF(A-N)4x1.79 or WF(A-N)4x3.06)
    - k = 2" maximum gap between adjacent walkway grating sections and handrail ends
  - \*\* If walkway bracket at safety chain location is behind sign, add angle to bracket, see Alternate Safety Chain Attachment on Base Sheet OS-A-11.



**SECTION A-A**

Handrail and walkway shall span a minimum of three brackets between splices and/or gap joints. Place all sign and walkway brackets as close to panel points as practical. Handrail joints, grating, and light support splices placed as needed.

Structure Number	Station	a	b	c	d	e	Walkway Grating and Handrail Lengths
5 S 057 1039 R000.50	126+18	11'-6"	52'-0"	10'-6"	—	—	52'-0"
5 S 057 1039 R001.00	154+83.5	12'-3"	48'-0"	10'-9"	—	—	48'-0"
See also "Sign Truss Mounting Details" Sheets 105 & 106							

Truss grating to facilitate inspection shall run full length (center to center of support frames) ±12" on overhead trusses. Cost of truss grating is included in "Overhead Sign Structure".

Walkway and Truss Grating width dimensions are nominal and may vary ±1/2" based on available standard widths.

OS-A-9 1-20-11