

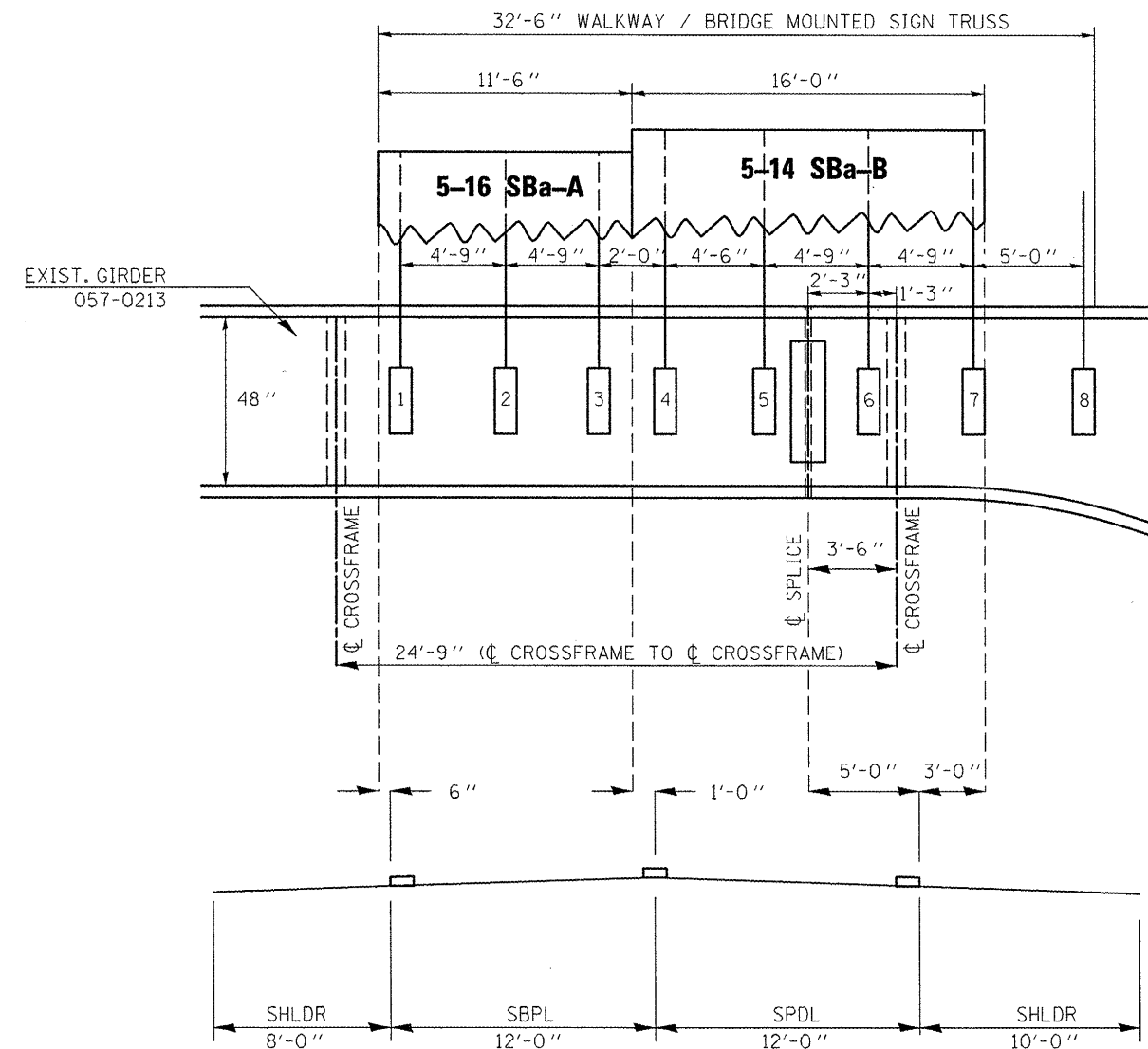
SIGN TRUSS MOUNTING DETAIL

5 B 057 I039 R001.90

NEW TRUSS BRIDGE MOUNTED TO STRUCTURE 057-0213

NOTE

For mounting accuracy, Contractor shall start by laying out the location for Bracket #6 between the splice plate and the cross-frame diaphragm. Bracket #6 shall be 2'-3" (27") from the centerline of the splice and 1'-3" (15") from the centerline of the cross-framing. All other brackets are to be laid out from Bracket #6 using the dimensions shown in the Sign Truss Mounting Detail for 5 B 057 I039 R001.90.



FILE NAME =	USER NAME = ceerlockjd	DESIGNED - JAL	REVISED -
c:\pwork\pwork\ceerlockjd\0266557\0266557.dgn	46179-sht-details.dgn	DRAWN -	REVISED -
PLOT SCALE = 40.0000' / in.	CHECKED -	REVISED -	REVISED -
PLOT DATE = 10/7/2011	DATE = 04/26/11	REVISED -	REVISED -

STATE OF ILLINOIS
DEPARTMENT OF TRANSPORTATION

SIGN TRUSS MOUNTING DETAILS
I-39

SCALE: SHEET NO. 4 OF 24 SHEETS STA. TO STA.

•VARIOUS COUNTIES		••D-5 OVD SIN STR REPL 2012-06	
F.A. RTE.	SECTION	COUNTY	TOTAL SHEETS
•	••	Various	178
			SHEET NO. 121
CONTRACT NO. 46179			
ILLINOIS FED. AID PROJECT			