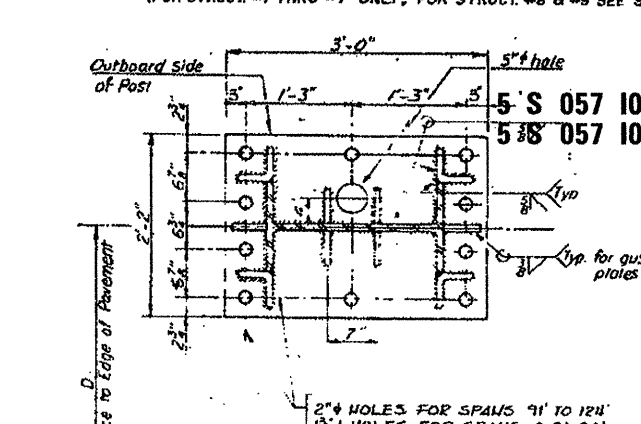
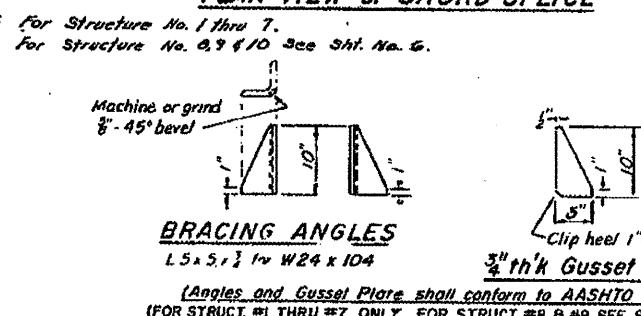
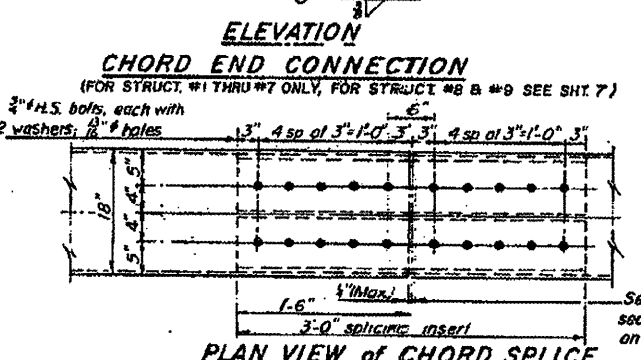
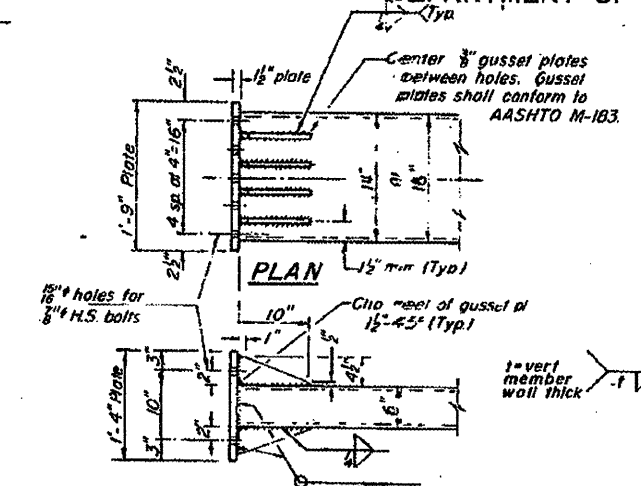
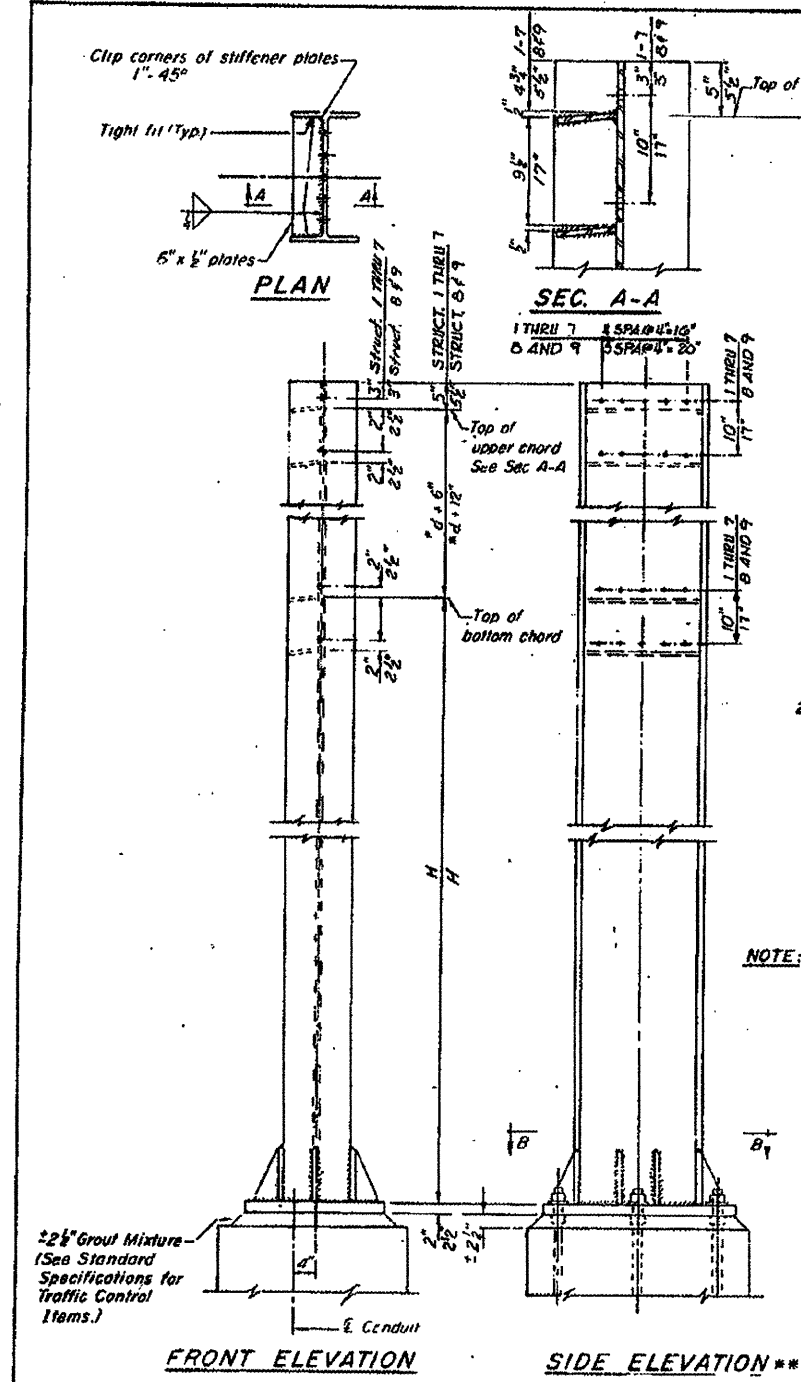


EXISTING INFORMATION ONLY

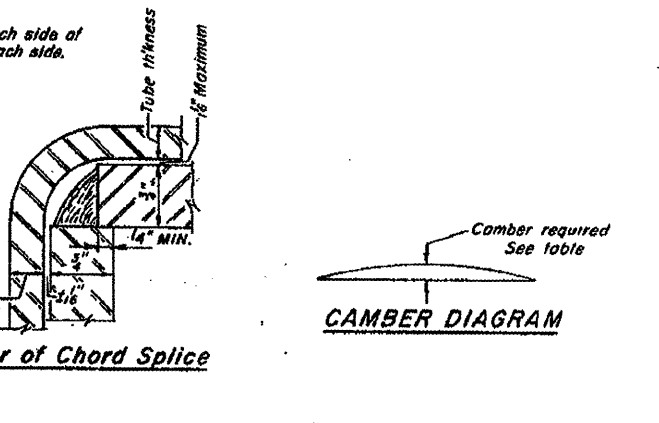
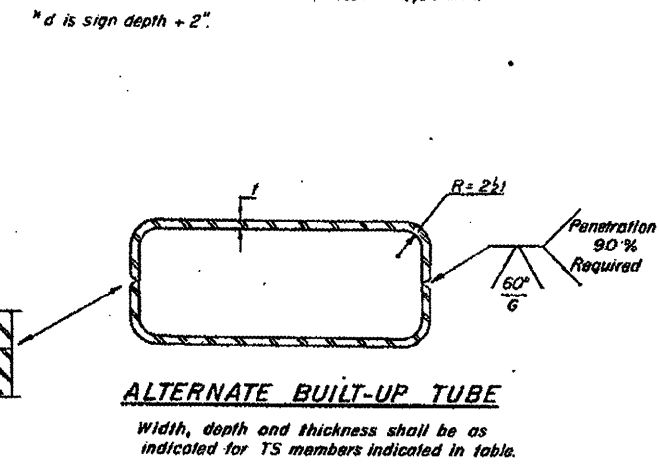
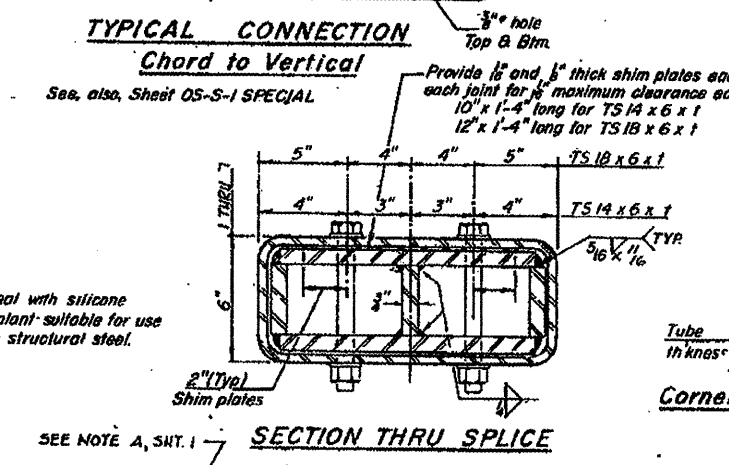
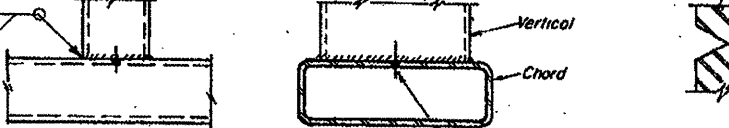
STATE OF ILLINOIS
DEPARTMENT OF TRANSPORTATION

DESIGN NO.	DATE	BY	CHECKED	SCALE
OS-S-2	10/7/2011	JAL	JAL	AS-BUILT

SHEET NO 2
SHEETS 10



Design Span	Comber of Centerline	Chord	Vertical	Post	C-C Chords
0 to 70'	4"	TS14x6x3/8	TS10x6x3/8	W24x104	*d+6"
71 to 80'	4"	TS14x6x3/8	TS10x6x3/8	W24x104	*d+6"
81 to 90'	6"	TS18x6x3/8	TS14x6x3/8	W24x104	*d+6"
91 to 100'	6"	TS18x6x3/8	TS14x6x3/8	W24x104	*d+6"
101 to 110'	6"	TS18x6x3/8	TS14x6x3/8	W24x104	*d+6"
111 to 124'	6"	TS18x6x3/8	TS14x6x3/8	W24x104	*d+6"
138'	8"	TS20x12x1/2	TS16x8x3/8	W27x178	*d+12"
148'	8"	TS20x12x1/2	TS16x8x3/8	W27x178	*d+12"



Structure No	Station	Span	*d	Comber at E	Exterior Unit Lgth (L)	Interior Unit Lgth (L)	No. of Panels (N)	Panel Lgth (P)	Chord Size	Vertical Size	Post Size	L.H. Post Dim H	R.H. Post Dim H
1	261+81.25 (FAI-55)	110'-1"	14'-8"	6"	36'-3 1/2"	37'-6"	19	5'-7"	TS18x6x3/8	TS14x6x3/8	W24x104	20'-1"	20'-1"
2	262+00.0 (FAI-55)	110'-1"	12'-8"	6"	36'-3 1/2"	37'-6"	19	5'-7"	TS18x6x3/8	TS14x6x3/8	W24x104	20'-1"	15'-4"
3	282+00.0 (FAI-55)	85'-3"	12'-2"	6"	28'-1 1/2"	29'-0"	13	6'-3"	TS18x6x3/8	TS14x6x3/8	W24x104	20'-1"	20'-1"
4	312+00.0 (FAI-55)	98'-0"	12'-8"	6"	32'-3 3/4"	33'-4 1/2"	16	5'-10 1/2"	TS18x6x3/8	TS14x6x3/8	W24x104	19'-3"	19'-3"
5	338+40.0 (FAI-55)	98'-0"	12'-8"	6"	32'-3 3/4"	33'-4 1/2"	16	5'-10 1/2"	TS18x6x3/8	TS14x6x3/8	W24x104	20'-2"	21'-0"
6	364+80.0 (FAI-55)	98'-0"	12'-8"	6"	32'-3 3/4"	33'-4 1/2"	16	5'-10 1/2"	TS18x6x3/8	TS14x6x3/8	W24x104	20'-4"	20'-4"
7	237+20.0 (FAI-55)	112'-0"	12'-8"	6"	37'-9"	36'-6"	20	5'-4 1/2"	TS18x6x3/8	TS14x6x3/8	W24x104	18'-0"	18'-0"
8	152+89.0 (EAP-412)	138'-0"	12'-8"	8"	(SEE ELEVATION SHEET 1)	(SEE ELEVATION SHEET 1)	24	5'-7"	TS20x12x1/2	TS16x8x3/8	W27x178	19'-5"	19'-5"
9	194+20.0 (EAP-412)	148'-0"	14'-8"	8"	(SEE ELEVATION SHEET 1)	(SEE ELEVATION SHEET 1)	24	6'-0"	TS20x12x1/2	TS16x8x3/8	W27x178	20'-2"	20'-2"

POST
W24 x 104
OR
W27 x 178 (STRUCTURE # 8 & # 9)

** DETAILS FOR STRUCTURES 1 THRU 7 SHOWN; 8 AND 9 ARE SIMILAR EXCEPT AS NOTED.

DESIGNED	EXAMINED	19
CHECKED	PASSED	ENGINEER OF BRIDGE DESIGN
DRAWN	APPROVED	ENGINEER OF BRIDGE AND TRAFFIC CONTROL
CHECKED	APPROVED	DIRECTOR OF HIGHWAYS

OS-S-2 SPECIAL

OVERHEAD SIGN STRUCTURES
POST and CHORD DETAILS

F.A.P. ROUTE 412 / F.A.I. ROUTE 55

McLEAN COUNTY

*VARIOUS COUNTIES
**D-5 OVD SIN STR REPL 2012-06