

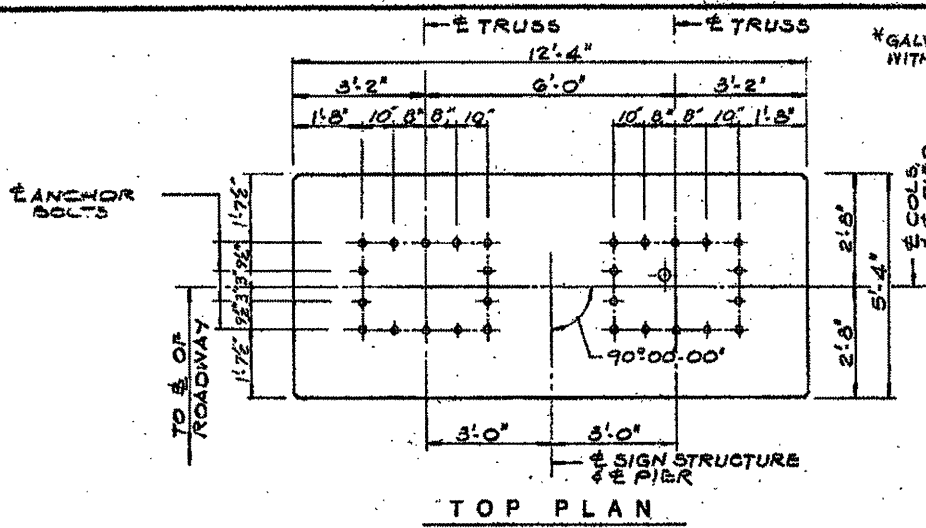
EXISTING INFORMATION ONLY

ROUTE NO.	SECTION	COUNTY	TOTAL SHEETS	SHEET NO.
57-254	1039	McLEAN	33	33
STA. TO STA.		PROJECT		
126+43.51		* 57-254-57-352		

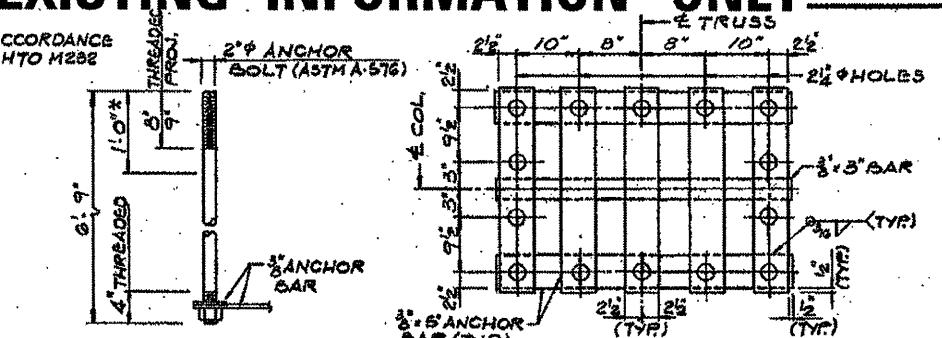
BILL OF MATERIAL (TOTAL)

MARK	NO.	SIZE	LENGTH	SHAPE
S1	32	8	4'0"	—
W1	136	9	11'-1"	C
S1	40	6	25'-4"	□
S2	48	6	6'-0"	—
S3	48	6	6'-9"	—
E1	100	9	11'-1"	C
W1	90	9	16'-3"	C
TOTALS FOR TWO FOOTINGS				
ITEM	UNIT	AMT.		
REINFORCING BARS	LSB.	15,570		
CLASS 'X' CONCRETE	CU. YDS.	834		
CONCRETE PILES	LIN. FT.	420		
TEST PILE CONCRETE	EA.	2		
STRUCTURE EXCAV.	CU. YDS.	125		

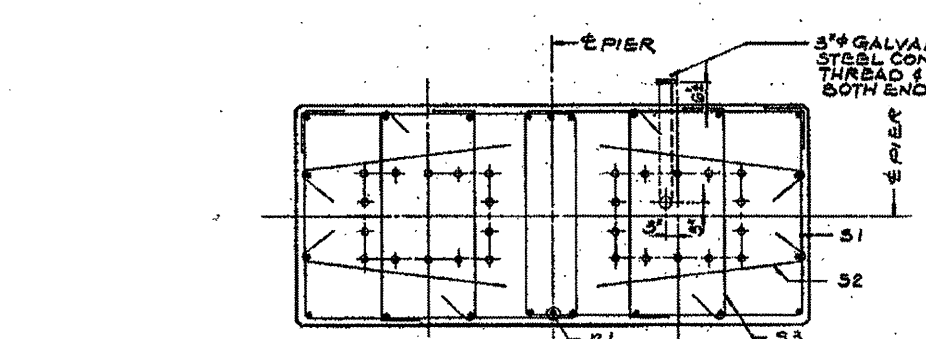
NOTES:
 ALL BAR DIMENSIONS ARE OUT TO OUT.
 ALL CHAMBERS TO BE 3/4"
 ← INDICATES DIRECTION OF PILE BATTER.



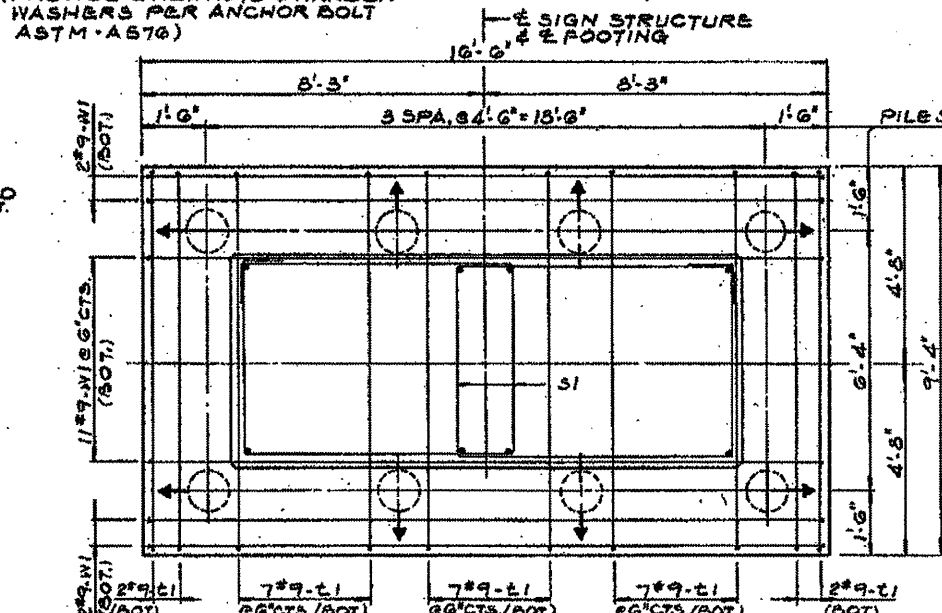
TOP PLAN



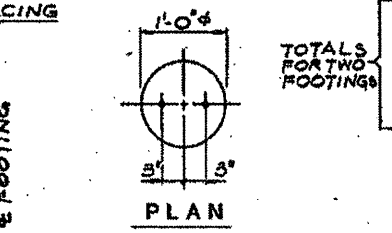
ANCHOR BOLT DETAIL (PROVIDE 2 HEX NUTS & HARDEN WASHERS PER ANCHOR BOLT ASTM A576)
 ANCHOR BAR DETAIL



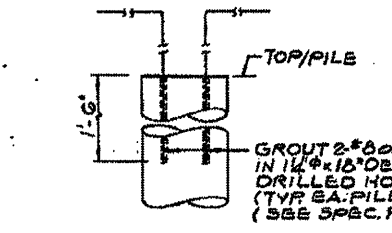
SECTION A-A



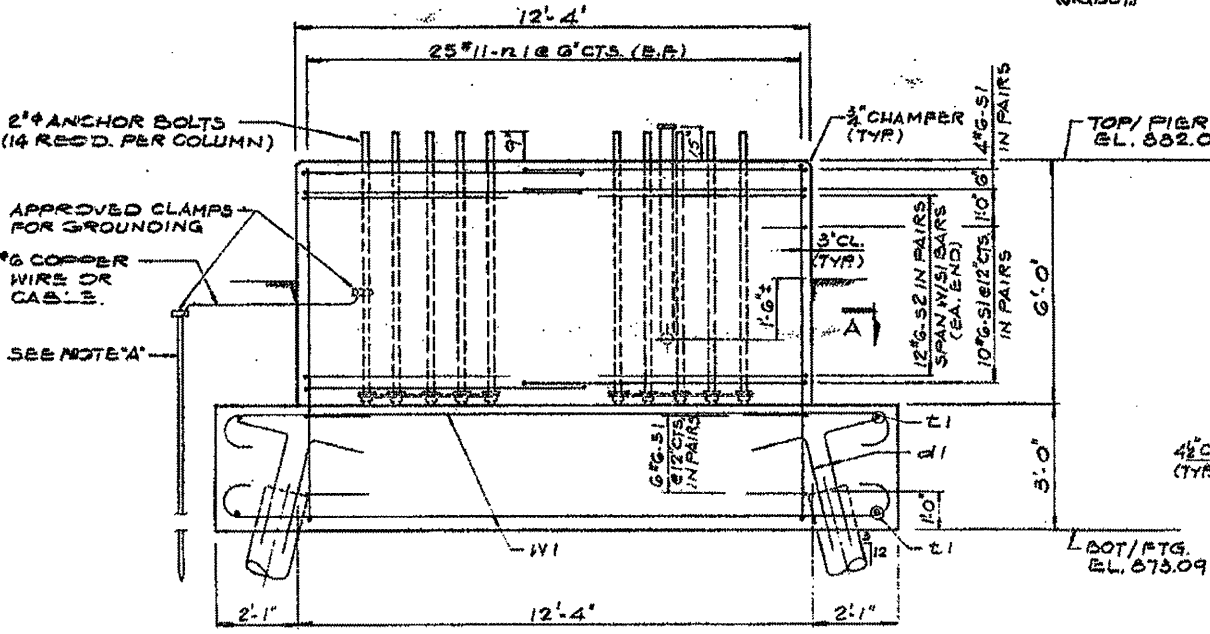
FOOTING PLAN



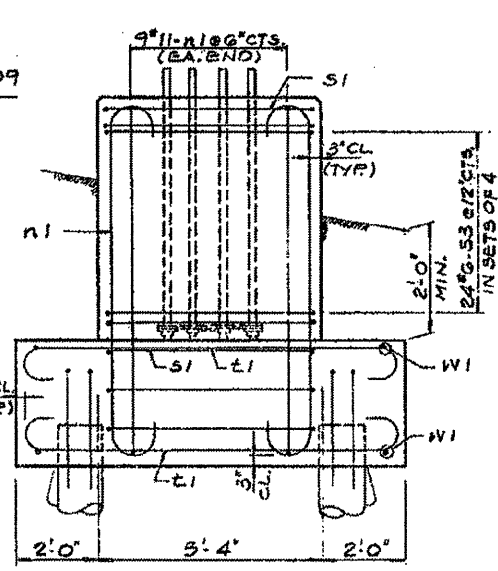
PLAN



ELEVATION PILE DETAILS



ELEVATION

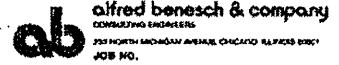


END VIEW

NOTE:
 3/4" x 8'0" COPPER WELD GROUND ROD DRIVEN INTO GROUND. COST OF ROD, CABLE & CLAMPS SHALL BE INCIDENTAL TO COST OF CLASS 'X' CONCRETE.

DESIGN NOTES:
 fc = 3500 PSI
 fy = 60,000 KSI
 STRUCT. STL. M185

PILE DATA: (2 THIS)
 TYPE — CONCRETE
 CAPACITY — 35 TON
 EST. LENGTH — 30 FT
 NO. REQ'D — 10 **
 (** INCLUDES 2 TEST PILES ONE PER FOOTING)



5 S 057 1039 R000.50
SIGN STRUCTURE # 10
FOOTING DETAILS
 F.A.P. ROUTE 412-SEC. 57-2SG
 McLEAN COUNTY 57-3SG
 STATION 126+43.51
 STRUCTURE NUMBER # 10

FILE NAME =	USER NAME = cse-lockjd	DESIGNED - JAL	REVISED -
al:\pwork\pwork\cse-lockjd\266557\1039\sh-detai\ndgn		DRAWN -	REVISED -
PLOT SCALE = 48.5882 1/1 in.		CHECKED -	REVISED -
PLOT DATE = 10/7/2011		DATE - 04/26/11	REVISED -

STATE OF ILLINOIS
 DEPARTMENT OF TRANSPORTATION

AS-BUILTS FOR INFORMATION ONLY			
SCALE	SHEET NO.	OF SHEETS	STA. TO STA.

F.A. RTE.	SECTION	COUNTY	TOTAL SHEETS	SHEET NO.
		Various	178	138
CONTRACT NO. 46179				

ILLINOIS FED. AID PROJECT