

EXISTING INFORMATION ONLY

STATE OF ILLINOIS
DEPARTMENT OF TRANSPORTATION

* FAP 412, F.A.I.-55, FAP 44 (M.S. RTE. 51)
* * 57-4 OMR-4, VBR, 1V, 62R, 1, 5C & TS

ROUTE NO.	SECTION	COUNTY	TOTAL SHEETS	SHEET NO.
#	**	McLEAN	319	128
SHEETS				

GENERAL NOTES

SPECIFICATIONS:

DESIGN: AASHTO Standard Specifications for Structural Supports for Highway Signs, Luminaires and Traffic Signals - dated January, 1975.

CONSTRUCTION: Standard Specifications for Road and Bridge Construction, State of Illinois, (dated October 1, 1983); Supplemental Specifications for Road and Bridge Construction; Standard Specifications for Traffic Control Items (dated Feb. 1, 1984) and Special Provisions.

MINIMUM CLEARANCE: Vertical Roadway Clearance = 17'-3" (All Obstructions)

LOADING: 80 MPH WIND VELOCITY PLUS 30% GUST FACTOR
WIND LOADING: 35 psf normal to Sign Panel Area as shown below in Wind Loading Diagram plus 48 psf normal to exposed frame members.

WALKWAY LOADING: Dead Load plus 500# concentrated Live Load.

MATERIALS:

REINFORCEMENT BARS shall conform to the requirements of AASHTO M31 or M53, Grade 60.

CLASS X CONCRETE shall be used throughout.
STRUCTURAL STEEL. All material for structural chords, verticals, or chord splices shall conform to either ASTM A500, Grade C, AASHTO M222 or AASHTO M223, Grade 50 and shall meet the longitudinal CVN requirements of 15 ft. lbs. at 40° F.

All material for the posts shall conform to AASHTO M222 or M223, Grade 50 and shall meet the longitudinal CVN requirements of 15 ft. lbs. at 40° F.

HIGH STRENGTH BOLTS shall conform to the requirements of AASHTO M164.
STRUCTURAL SHAPES and PLATES shall conform to the requirements of AASHTO M223, Grade 50, or M222, unless otherwise specified.

PAINTING: The zinc-silicate and vinyl paint system shall be used for shop and field painting of all structural steel. Exterior surfaces of all structural steel that are painted with the high-build vinyl paint shall receive one coat of vinyl enamel. Paint system, including field coat, for the walkway gratings may be done in the shop or just prior to erection. Chords, verticals and posts will require painting on exterior surfaces only.

WELDING: All welding shall be in accordance with Article 507.04(s) of the Standard Specifications for Road and Bridge Construction.

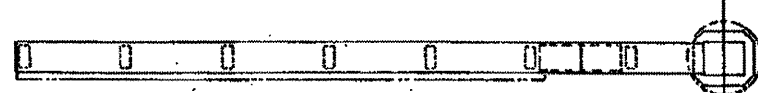
THE SIGNAL HEADS TO BE MOUNTED ON THE CANTILEVER SIGN STRUCTURE SHALL BE INSTALLED IN ACCORDANCE WITH STANDARD 2071-1, WITH A VERTICAL TUBE OF SUFFICIENT LENGTH FOR CONNECTION TO BOTH THE TOP AND BOTTOM CHORDS OF THE SIGN SUPPORT.

TOTAL BILL OF MATERIAL

OVERHEAD SIGN STRUCTURE - CANTILEVER (SPECIAL)	Lin. Ft.	143.00
OVERHEAD SIGN STRUCTURE WALKWAY - TYPE S	Lin. Ft.	115.00
DRILLED SHAFT CONCRETE FOUNDATIONS	Cu. Yds.	37.2

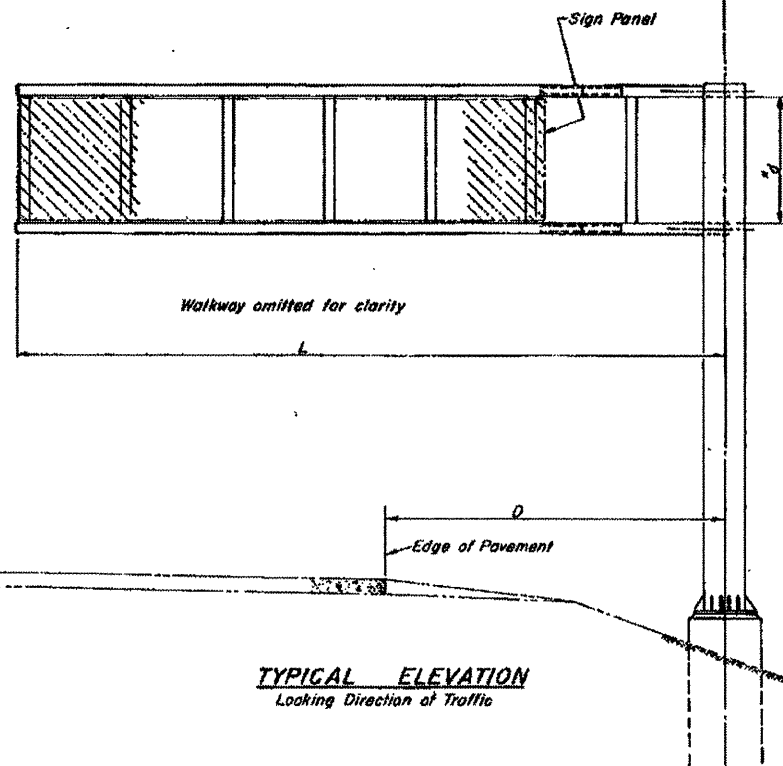
OVERHEAD SIGN STRUCTURES - CANTILEVER GENERAL PLAN & ELEVATION

F.A.I.-55 AND U.S. RT.51
F.A.P.412
McLEAN COUNTY



TYPICAL PLAN

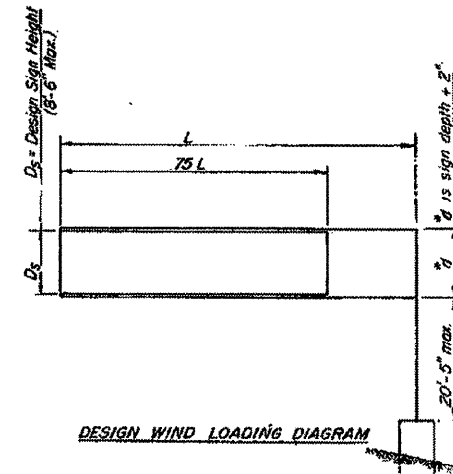
5 C 057 U051 L006.90
5 C 057 U051 L007.30



TYPICAL ELEVATION
Looking Direction of Traffic

Structure No.	Station	Elev. A	Dim. D	D ₂	D ₃
C1	195+50.0 (F.A.I.-55)	875.54	17'10"	8'6"	11'-2"
C2	45+50.0 (U.S. 51)	844.50	15'-6"	8'6"	8'-6"
C3	57+00.0 (U.S. 51)	865.02	15'-0"	7'6"	8'-6"

Elev. A = Elevation of Highest Point of Roadway under Sign.



DESIGN WIND LOADING DIAGRAM

Structure No.	Station	L	% d	Camber	No. of Panels (N)	Panel Lgth (P)	Chord Size	Vertical Size
C1	195+50.0 (F.A.I.-55)	33'-11"	11'-2"	4"	7	4'-5"	T8 18x6x1/2	T8 14x6x1/2
C2	45+50.0 (U.S. 51)	33'-7"	8'-6"	10'-2"	11	4'-5"	T8 18x6x1/2	T8 14x6x1/2
C3	57+00.0 (U.S. 51)	33'-7"	8'-6"	10'-2"	11	4'-5"	T8 18x6x1/2	T8 14x6x1/2

5 C 057 U051 L006.90
5 C 057 U051 L007.30

DESIGNED	EXAMINED
CHECKED	PASSED
DRAWN	APPROVED
CHECKED	

OSC-S-1-SPECIAL

FILE NAME =	USER NAME = ceer-lockjd	DESIGNED - JAL	REVISED -
at:\pwork\pedit\ceer-lockjd\0266557.D	45179-shr-deta1.dgn	DRAWN -	REVISED -
	PLOT SCALE = 40.0000' / 1"	CHECKED -	REVISED -
	PLOT DATE = 9/21/2011	DATE - 04/26/11	REVISED -

STATE OF ILLINOIS
DEPARTMENT OF TRANSPORTATION

AS-BUILTS
FOR INFORMATION ONLY

SCALE: SHEET NO. OF SHEETS STA. TO STA.

F.A. RTE.	SECTION	COUNTY	TOTAL SHEETS	SHEET NO.
*	**	Various	178	159
CONTRACT NO. 46179				
ILLINOIS FED. AID PROJECT				

*VARIOUS COUNTIES
**D-5 OVD SIN STR REPL 2012-06