

EXISTING INFORMATION ONLY

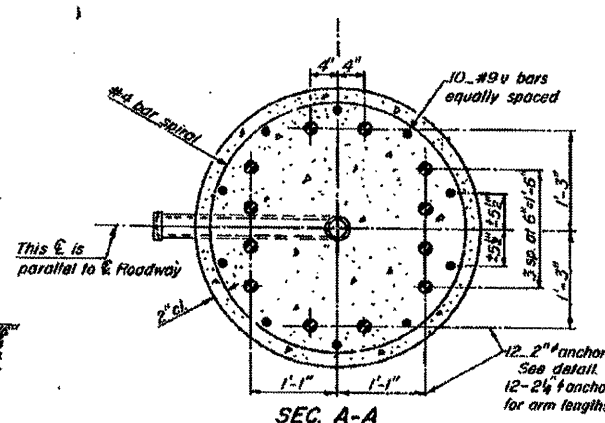
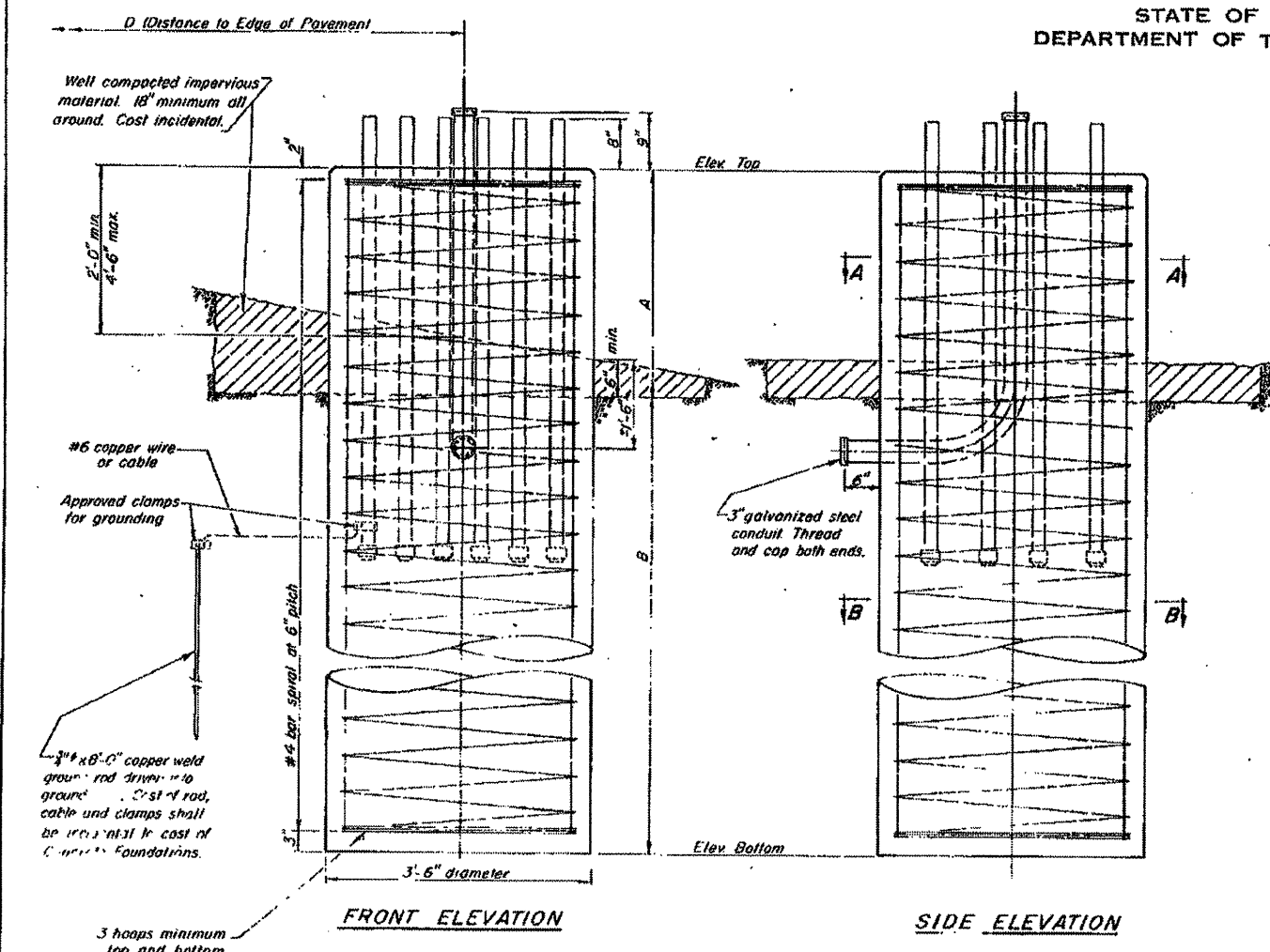
STATE OF ILLINOIS
DEPARTMENT OF TRANSPORTATION

DATE	BY	ENGINEER	CHECKED	SCALE	SHEET NO.
*	**	McLEAN	319	132	

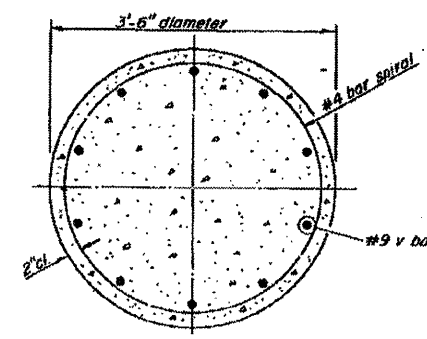
* PAP 412, FAI-55, FAP 46 (U.S. RTE. 51)
* * 57-0 (HBR-4, VBR, 1W, 62R, L, SG & TS)

NOTES:

The foundation details shown are for Average Cohesive Soil Conditions (stiff clays, sandy clays) and with a minimum $Q_u = 10$ Tons/Sq. Ft. " Q_u " being the average value of hand penetrometer readings at various depths of the shaft as determined by the Engineer at time of drilling operations or previous soil investigation.



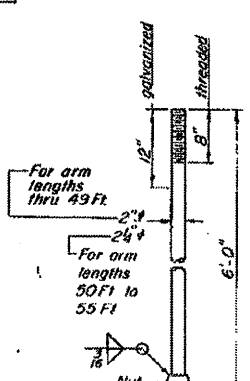
SEC. A-A
NOTE: The anchor bolts and reinforcing cage must be in place before pouring concrete, and shall be adjusted for proper placement of anchor bolts as shown.



SEC. B-B

L	B (Min)
35'	17"
40'	20"
45'	25"

L: DESIGN ARM LENGTH



ANCHOR BOLT DETAILS
(ASTM A-576 - $F_y = 55,000$ psi)
Galvanize upper 12" in accordance with AASHTO M-232
Provide 3 nuts and 1 washer for each anchor bolt

BAR LIST - EACH FOUNDATION

Bar	No	Size	Lgth	Shape
v	10	#9	A+B-5"	-

#4 bar spiral - see Front Elevation

DESIGNED	EXAMINED	19
CHECKED	PAKUPP	ENGINEER OF BRIDGE DESIGN
DRAWN	APPROVED	INCHARGE OF BRIDGES AND STRUCTURES
CHECKED		SUPERVISOR OF BRIDGES

OSC-S-5-SPECIAL

**OVERHEAD SIGN STRUCTURES - CANTILEVER
DRILLED SHAFT CONCRETE FOUNDATION**

F.A.I.-55 AND U.S. RT.51
F.A.P.412
McLEAN COUNTY

FILE NAME =	USER NAME = ceerlockjd	DESIGNED - JAL	REVISED -	STATE OF ILLINOIS DEPARTMENT OF TRANSPORTATION	AS-BUILTS FOR INFORMATION ONLY	F.A. RTE.	SECTION	COUNTY	TOTAL SHEETS	SHEET NO.
et\pwwork\pwwork\ceerlockjd\02665570	46179-shv-de-toladgn	DRAWN -	REVISED -			*	**	Various	178	163
	PLOT SCALE = 48,0000' / in.	CHECKED -	REVISED -		SCALE:					
	PLOT DATE = 9/21/2011	DATE - 04/26/11	REVISED -		SHEET NO. OF SHEETS	STA.	TO STA.	163	CONTRACT NO. 46179	
ILLINOIS FED. AID PROJECT										