

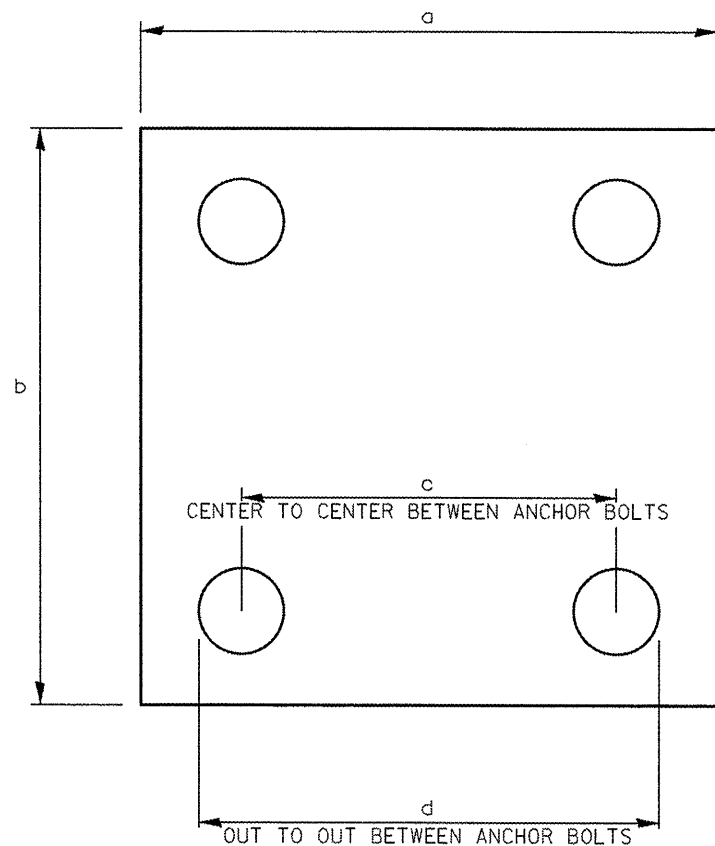
## EXISTING MONOTUBE BASE PLATE AND ANCHOR BOLT CIRCLE DIMENSIONS

Location No.	Monotube No.	Existing Anchor Bolt Size* inches	Existing Nut Size inches	a inches	b inches	c* center-to-center variable between bolts inches	d* out-to-out variable between bolts inches	Existing End Support Dia. inches	Existing Base Plate Thickness inches
5-21	227	1 1/2"	2 3/8"	14"	14"	9 3/8" - 9 5/8"	10 7/8" - 11 1/8"	10"	1 1/2"
5-22	228	1 1/2"	2 3/8"	15.5"	15.5"	10 3/8" - 10 5/8"	11 7/8" - 12 1/8"	10"	1 13/16"
5-23	230	1 3/4"	2 3/4"	17"	17"	11 1/8" - 11 3/4"	12 7/8" - 13 1/2"	12"	2"
5-24	231	1 1/2"	2 3/8"	15.5"	15.5"	10 3/8" - 10 5/8"	11 7/8" - 12 1/8"	10"	1 13/16"
5-25	232	1 1/2"	2 3/8"	15.5"	15.5"	10 3/8" - 10 5/8"	11 7/8" - 12 1/8"	10"	1 13/16"

\* See Note #2

\* See Note #2

\* See Note #2



### NOTES:

1. New End Supports to be installed on existing concrete foundations with existing anchor bolts.
2. The Contractor shall field measure the existing bolt circle patterns for each end support at each monotube location. Variations exist in the as-built center to center measurements from anchor bolt to anchor bolt. The Contractor shall provide accurate field measured bolt circle dimensions to the fabricator prior to the fabrication of the new end supports.
3. The fabricator, when sizing end column diameters, shall ensure sufficient space between the outside wall of the end column and sides of the anchor bolts to allow for the washer and locknut to sit flush against the base plate without touching the welded connection between the end column and the base plate.
4. Removing all grout between the base plate and the foundation, cleaning and painting the exposed anchor bolts, and installing a stainless steel screen will be paid for under "Overhead Sign Support Grout Repair".
5. The Contractor shall furnish and install new anchor rod locknuts, leveling nuts, and washers. Anchor rod nuts and washers shall be galvanized per Article 1094.02, Article 1006.09, and AASHTO M232.

•VARIOUS COUNTIES  
••D-5 OVD SIN STR REPL 2012-06

FILE NAME =	USER NAME = ceerlockjd	DESIGNED - JAL	REVISED -	<b>STATE OF ILLINOIS DEPARTMENT OF TRANSPORTATION</b>	<b>MONOTUBE SIGN STRUCTURE EXISTING BASEPLATE AND ANCHOR BOLT CIRCLE DETAILS</b>	F.A. RTE.	SECTION	COUNTY	TOTAL SHEETS	SHEET NO.
01\pwwork\pwwork\ceerlockjd\0266557\0	046179-shr-deta1.dgn	DRAWN -	REVISED -			*	**	Various	178	176
PLOT SCALE = 48.0000' / in.	CHECKED -	REVISED -	REVISED -			CONTRACT NO. 46179				
PLOT DATE = 9/21/2011	DATE - 04/26/11	REVISED -	REVISED -			ILLINOIS FED. AID PROJECT				
				SCALE:	SHEET NO. OF SHEETS	STA.	TO STA.			