

SHEET NO. TITLE

1	TITLE SHEET
2	GENERAL NOTES, STATE STANDARDS AND INDEX OF SHEETS
3-4	SUMMARY OF QUANTITIES
5-7	TYPICAL SECTIONS
8-9	PLAT OF HIGHWAYS
10-11	ALIGNMENT, TIES & BENCHMARKS
12	DEMOLITION AND UTILITY PLAN
13	PLAN AND PROFILE
14-15	DETOUR PLAN
16	PAVEMENT MARKING PLAN
17	EROSION CONTROL PLAN
18	STANDARD CONCRETE POLE FOUNDATION DETAILS
19-29	STRUCTURAL PLANS
30	IL 171 CROSS SECTIONS
31	MILNE CREEK CROSS SECTIONS
32	DRIVEWAY DETAILS - DISTANCE BETWEEN R.O.W. AND FACE OF CURB IS LESS THAN 15" (4.5 m) (BD-02)
33	STORM SEWER CONNECTION TO EXISTING SEWER (BD-07)
34	FRAMES AND LIDS ADJUSTMENT WITH MILLING; AND FRAMES AND LIDS ADJUSTMENT WITHOUT MILLING (BD-08)
35	PAVEMENT PATCHING FOR HMA SURFACED PAVEMENT (BD-22)
36	BUTT JOINT AND HMA TAPER DETAILS (BD-32)
37	TEMPORARY LIGHT POLE DETAIL (BE-800)
38	TRAFFIC CONTROL AND PROTECTION FOR SIDE ROADS, INTERSECTIONS AND DRIVEWAYS (TC-10)
39	RAISED REFLECTIVE PAVEMENT MARKERS (SNOW-PLOW RESISTANT) (TC-11)
40	DISTRICT ONE TYPICAL PAVEMENT MARKINGS (TC-13)
41	DETOUR SIGNING FOR CLOSING STATE HIGHWAYS (TC-21)
42	ARTERIAL ROAD INFORMATION SIGN (TC-22)
43	DRIVEWAY ENTRANCE SIGNING (TC-26)

STATE STANDARDS

<u>SHEET NO.</u>	<u>TITLE</u>
000001-06	STANDARD SYMBOLS, ABBREVIATIONS AND PATTERNS
001001-02	AREAS OF REINFORCEMENT REBARS
001006	DECIMAL OF AN INCH AND OF A FOOT
280001-06	TEMPORARY EROSION CONTROL SYSTEMS
424001-06	CURB RAMPS FOR SIDEWALK
442201-03	CLASS C AND CLASS D PATCHES
515001-03	NAME PLATE FOR BRIDGE
602001-02	CATCH BASIN, TYPE A
602301-03	INLET, TYPE A
602401-03	MANHOLE TYPE A
602501-02	VALVE VAULT, TYPE A
604001-03	FRAME AND LIDS TYPE 1
604091-02	FRAME AND GRATE TYPE 24
606001-04	CONCRETE CURB TYPE B AND COMBINATION CONCRETE CURB AND GUTTER
635011-02	REFLECTOR MARKER AND MOUNTING DETAILS
667101-02	PERMANENT SURVEY MARKERS
701101-02	OFF-RD OPERATIONS, MULTILANE, 15' (4.5 m) TO 24' (600 mm) FROM PAVEMENT EDGE
701106-02	OFF-RD OPERATIONS, MULTILANE, MORE THAN 15' (4.5 m) AWAY
701301-04	LANE CLOSURE 2L, 2W SHORT TIME OPERATIONS
701427	LANE CLOSURE, MULTILANE, INTERMITTENT OR MOVING OPER., FOR SPEEDS < 40 MPH
701901-02	TRAFFIC CONTROL DEVICES
720001-01	SIGN PANEL MOUNTING DETAILS
720006-03	SIGN PANEL ERECTION DETAILS
720011-01	METAL POSTS FOR SIGNS, MARKERS AND DELINEATORS
729001-01	APPLICATION OF TYPES A & B METAL POSTS (FOR SIGN & MARKERS)
780001-03	TYPICAL PAVEMENT MARKINGS
814001-02	HANDHOLES
836001-01	LIGHT POLE FOUNDATION

GENERAL NOTES

ALL ELEVATIONS ARE BASED ON UNITED STATES COAST AND GEODETIC SURVEY DATUM.

DIMENSIONS ARE IN ENGLISH UNITS UNLESS OTHERWISE NOTED.

BEFORE STARTING ANY EXCAVATION, THE CONTRACTOR SHALL CALL "JULIE" AT 800-892-0123 FOR FIELD LOCATIONS OF BURIED ELECTRIC, TELEPHONE, AND GAS FACILITIES (48 HOURS NOTIFICATION IS REQUIRED).

THE CONTRACTOR WILL NOT BE ALLOWED TO SET UP A YARD OR FIELD OFFICE ON STATE PROPERTY WITHOUT WRITTEN PERMISSION FROM THE DEPARTMENT.

IT SHALL BE THE CONTRACTOR'S RESPONSIBILITY TO VERIFY ALL DIMENSIONS AND CONDITIONS EXISTING IN THE FIELD PRIOR TO CONSTRUCTION AND ORDERING MATERIALS.

ANY REFERENCE TO STANDARDS IN THE PLANS OR SPECIAL PROVISIONS SHALL BE INTERPRETED TO BE THE LATEST STANDARDS.

WHEN ARTIFICIAL LIGHTING IS UTILIZED IN NIGHT OPERATIONS, THE CONTRACTOR SHALL EXERCISE THE UTMOST PRECAUTIONS IN PREVENTING ADVERSE VISIBILITY TO THE MOTORING PUBLIC AND ADJOINING PROPERTIES.

THE RESIDENT ENGINEER SHALL CONTACT MR. LAWERENCE HILL, AREA TRAFFIC ENGINEER, AT (815) 485-6475 AT A MINIMUM OF 2 WEEKS PRIOR TO THE PLACEMENT OF PERMANENT PAVEMENT MARKINGS.

THE CONTRACTOR SHALL CONTACT THE TRAFFIC CONTROL SUPERVISOR AT (847) 705-4470 A MINIMUM OF 72 HOURS PRIOR TO BEGINNING WORK.

BEFORE BEGINNING ANY WORK, THE CONTRACTOR SHALL RETAIN AND RECORD FOR FUTURE REFERENCE, ALL EXISTING PAVEMENT MARKING LINES (AND RAISED REFLECTIVE MARKERS) IN ORDER THAT THESE LOCATIONS CAN BE RE-ESTABLISHED FOR STRIPING. EXACT LOCATIONS OF ALL PAVEMENT MARKINGS SHALL BE DIRECTED BY THE ENGINEER.

THIS PROJECT REQUIRES AN US ARMY CORPS OF ENGINEERS 404 PERMIT. THE PERMIT ISSUED TO THE DEPARTMENT DOES NOT COVER THE IN STREAM WORK BY THE CONTRACTOR. THEREFORE AFTER AWARD, THE CONTRACTOR WILL NEED TO SUBMIT THE WORK PLAN TO THE CORPS. THE CORPS WILL NOT BE PROVIDING AN APPROVAL UNLESS STATED OTHERWISE IN THE PERMIT AND IN STREAM WORK CAN COMMENCE AT THE CONTRACTOR'S DISCRETION. GUIDELINES ON ACCEPTABLE IN STREAM WORK TECHNIQUES CAN BE FOUND ON THE CORPS WEBSITE: [HTTP://WWW.LRC.USACE.ARMY.MIL/](http://www.lrc.usace.army.mil/)

CONSTRUCTION ACTIVITIES ON THE RAILROAD'S ROW SHALL BE PERFORMED IN ACCORDANCE WITH THE DEPARTMENT'S POLICIES AND PROCEDURES FOR CONSTRUCTION PROJECTS INVOLVING RAILROADS. THE TEMPORARY EASEMENT ACQUIRED FROM THE CN SHALL BE USED FOR ACCESS ONLY AND ARTICLE 107.32 OF IDOT'S 2012 STANDARDS SPECIFICATIONS FOR ROAD AND BRIDGE CONSTRUCTION SHALL APPLY.

THE WORK TO INSTALL THE PROPOSED STEEL LINER AT BOTH THE UPSTREAM AND DOWNSTREAM LOCATIONS MUST BE COMPLETED PRIOR TO ANY REMOVAL OPERATION, INCLUDING EXCAVATION, AND THE REMOVAL OF THE EXISTING STONE ARCH CULVERT BETWEEN THE STEEL LINED SECTIONS. THE STEEL LINER WORK MAY BEGIN ONCE THE CONTRACTOR HAS BEEN GIVEN THE NOTICE TO PROCEED. THIS WORK IS LIMITED TO INSIDE THE EXISTING BOX CULVERT. NO OTHER WORK MAY BEGIN WITH REGARD TO THE BOX CULVERT REPLACEMENT SEGMENT ADJACENT TO IL ROUTE 171 UNTIL AFTER JULY 5, 2012. SEE THE STRUCTURAL SHEETS, SHEET 19, FOR THE RECOMMENDED CONSTRUCTION SEQUENCE.

ACCESS TO THE CULVERT TO INSTALL THE LINER WILL BE LIMITED FROM THE WEST SIDE OF IL ROUTE 171. THE CONTRACTOR SHALL HAVE ACCESS TO THE PROJECT LOCATION FROM COMMERCE STREET THROUGH THE RR TEMPORARY EASEMENTS, AND THEN THROUGH THE CREEK AREA WHERE ACCESS TO BOTH SIDES OF THE CULVERT BECOMES AVAILABLE TO IMPLEMENT THE WORK.

ALL MANPOWER, EQUIPMENT, TOOLS, AND CONSTRUCTION MATERIALS MUST BE BROUGHT THROUGH THE EXISTING CULVERT TO INSTALL THE LINER FROM THE RR ACCESS ROAD AND THEN UP THROUGH THE CREEK AREA WHERE TEMPORARY EASEMENTS ARE IN PLACE.

CONTRACTOR IS TO MAINTAIN ACCESS TO THE CAT CLINIC ON THE WEST SIDE, AND THE HOT DOG STAND ON THE EAST SIDE AT ALL TIMES DURING CONSTRUCTION.

ALL WORK IS TO BE COMPLETED BY THE COMPLETION DATE. THE COMPLETION DATE FOR THIS CONTRACT IS OCTOBER 1, 2012.

THE GENERAL CONTRACTOR IS REQUIRED TO HIRE AN ENVIRONMENTAL FIRM WITH AT LEAST FIVE (5) DOCUMENTED LEAKING UNDERGROUND STORAGE TANK CLEANUPS OR THAT IS PRE-QUALIFIED IN HAZARDOUS WASTE BY THE DEPARTMENT TO REMEDIATE THE SOIL CONTAMINATION AND MONITOR FOR WORKER PROTECTION.

GENERAL NOTES (CONT'D)

THERE EXISTS A 15 TON MAXIMUM ALLOWABLE WEIGHT LIMIT ON SN 099-6502, COMMERCE STREET OVER MILNE CREEK. EXISTING SIGNING AS SHOWN IN THE FIELD IS INCORRECT. THE CONTRACTOR SHALL NOTIFY THE ENGINEER PRIOR TO MOVING ANY HEAVY EQUIPMENT OR MATERIALS ACROSS THE BRIDGE. STORAGE OF EQUIPMENT AND MATERIALS ON THE BRIDGE WILL NOT BE ALLOWED.

CONTRACTOR TO ONLY USE SMALL TOOLS, SUCH AS JACKHAMMERS, TO BREAK UP THE CONCRETE CURB AND GUTTER. CONTRACTOR MUST KEEP SMALL BULLDOZERS, JACKHAMMERS AND ALL OTHER SMALL CONSTRUCTION EQUIPMENT AT LEAST 15 FEET AWAY FROM THE BUILDING ON THE WEST SIDE. CONTRACTOR MUST KEEP FULLY LOADED TRUCKS AND LARGE BULLDOZERS/CONSTRUCTION EQUIPMENT AT LEAST 20 FEET AWAY FROM THE BUILDING ON THE WEST SIDE.

LONCO, INC.
CONSULTING ENGINEERS
1560 WALL ST, SUITE 222
NAPERVILLE, ILLINOIS 60563 PH: 630/577-9100

DESIGNED - SLV	REVISED -
DRAWN - SLV	REVISED -
CHECKED - MJY, ST	REVISED -
DATE - 10/14/2011	REVISED -

**STATE OF ILLINOIS
DEPARTMENT OF TRANSPORTATION**

**GENERAL NOTES, STATE STANDARDS AND INDEX OF SHEETS
IL ROUTE 171 OVER MILNE CREEK**

SCALE: NONE	SHEET NO. 1 OF 1 SHEET	STA. 60+40 TO STA. 63+68	RTE. 577	SECTION D-T	COUNTY WILL	TOTAL SHEETS 44	SHEET NO. 2
			D-91-265-06		CONTRACT NO. 60B10		
			FED. ROAD DIST. NO. ILLINOIS FED. AID PROJECT				

Rev. 1-11-12

SUMMARY OF QUANTITIES				80% FEDERAL, 20% STATE		
CODE NO.	ITEM	UNIT	TOTAL	ROADWAY 0004	BRIDGE 0011	LANDSCAPING 0031
60248900	VALVE VAULTS, TYPE A, 5'-DIAMETER, TYPE 1 FRAME, CLOSED LID	EACH	1	1		
60266600	VALVE BOXES TO BE ADJUSTED	EACH	2	2		
60500040	REMOVING MANHOLES	EACH	5	5		
60500050	REMOVING CATCH BASINS	EACH	1	1		
60500060	REMOVING INLETS	EACH	4	4		
60605000	COMBINATION CONCRETE CURB AND GUTTER, TYPE B-6.24	FOOT	216	216		
66700205	PERMANENT SURVEY MARKERS, TYPE 1	EACH	2	2		
67000400	ENGINEER'S FIELD OFFICE, TYPE A	CAL MO	8	8		
67100100	MOBILIZATION	L SUM	1	1		
70103815	TRAFFIC CONTROL SURVEILLANCE	CAL DA	30	30		
70106800	CHANGEABLE MESSAGE SIGN	CAL MO	10	10		
* 78000200	THERMOPLASTIC PAVEMENT MARKING-LINE 4"	FOOT	816	816		
* 78100100	RAISED REFLECTIVE PAVEMENT MARKER	EACH	32	32		
78300200	RAISED REFLECTIVE PAVEMENT MARKER REMOVAL	EACH	32	32		
81012700	CONDUIT IN TRENCH, 2 1/2" DIA., PVC	FOOT	37	37		
81021340	CONDUIT PUSHED, 2 1/2" DIA., PVC	FOOT	102	102		
81028360	UNDERGROUND CONDUIT, PVC, 2 1/2" DIA.	FOOT	139	139		
* 81400100	HANDHOLE	EACH	1	1		
* 84200804	REMOVAL OF POLE FOUNDATION	EACH	1	1		
* 85000200	MAINTENANCE OF EXISTING TRAFFIC SIGNAL INSTALLATION	EACH	10	10		
* 89502380	REMOVE EXISTING HANDHOLE	EACH	1	1		
* X0322918	PROPOSED MANHOLE/CATCH BASIN CONNECTION OVER EXISTING STORM SEWER	EACH	6	6		
* X0325003	REMOVE EXISTING VALVE AND VAULT	EACH	1	1		
* X0502600	TEMPORARY LIGHTING	L SUM	1	1		
* X4022000	TEMPORARY ACCESS (COMMERCIAL ENTRANCE)	EACH	2	2		

* SPECIALTY ITEMS

SUMMARY OF QUANTITIES				80% FEDERAL, 20% STATE		
CODE NO.	ITEM	UNIT	TOTAL	ROADWAY 0004	BRIDGE 0011	LANDSCAPING 0031
△ X5539700	STORM SEWERS TO BE CLEANED	FOOT	216	216		
X6022830	MANHOLES, SANITARY, 6' DIAMETER, TYPE 1 FRAME, CLOSED LID	EACH	1	1		
X6026054	SANITARY MANHOLES TO BE REMOVED	EACH	1	1		
X7010216	TRAFFIC CONTROL AND PROTECTION, (SPECIAL)	L SUM	1	1		
* X8163090	UNIT DUCT, 600V, 3-1C NO.4, 1/C NO.6 GROUND, (XLP-TYPE USE), 1 1/2" DIA. POLYETHYLENE	FOOT	419	419		
* X8190205	TRENCH AND BACKFILL FOR ELECTRICAL WORK	FOOT	278	278		
* X8360310	LIGHT POLE FOUNDATION, 30" DIAMETER, SPECIAL	FOOT	8	8		
* X8440120	REMOVE AND RE-ERECT EXISTING LIGHTING UNIT	EACH	1	1		
Z0001050	AGGREGATE SUBGRADE, 12"	SQ YD	353	353		
Z0013798	CONSTRUCTION LAYOUT	L SUM	1	1		
△ Z0018500	DRAINAGE STRUCTURES TO BE CLEANED	EACH	9	9		
Z0030850	TEMPORARY INFORMATION SIGNING	SO FT	200	200		
* Z0033024	MAINTAIN EXISTING LIGHTING SYSTEM	L SUM	1	1		
Z0048665	RAILROAD PROTECTIVE LIABILITY INSURANCE	L SUM	1	1		
Z0073002	TEMPORARY SOIL RETENTION SYSTEM	SQ FT	67		67	
* Z0073510	TEMPORARY TRAFFIC SIGNAL TIMING	EACH	10	10		
X2090210	POROUS GRANULAR BACKFILL (SPECIAL)	CU YD	1680	1680		
Z0038135	THREE-SIDED PRECAST CONCRETE STRUCTURES, 20' X 10'	FOOT	48		48	
X5430110	CORRUGATED STEEL ARCH LINER	FOOT	48		48	
X0327365	RIVETED CORRUGATED STEEL PIPE	L SUM	1		1	
X0327357	CONSTRUCTION VIBRATION MONITORING	L SUM	1		1	
* 66900200	NON-SPECIAL WASTE DISPOSAL	CU YD	1,140	1,140		
* 66900450	SPECIAL WASTE PLANS AND REPORTS	L SUM	1	1		
* 66900530	SOIL DISPOSAL ANALYSIS	EACH	1	1		

△NON-PARTICIPATING (100% STATE)

△ Rev. 1-10-12

LOCO, INC.
CONSULTING ENGINEERS
1560 WALL ST., SUITE 222
NAPERVILLE, ILLINOIS 60563 PH: (630) 577-9100

DESIGNED - SLV	REVISED -
DRAWN - SLV	REVISED -
CHECKED - MJY, ST	REVISED -
DATE - 10/14/2011	REVISED -

**STATE OF ILLINOIS
DEPARTMENT OF TRANSPORTATION**

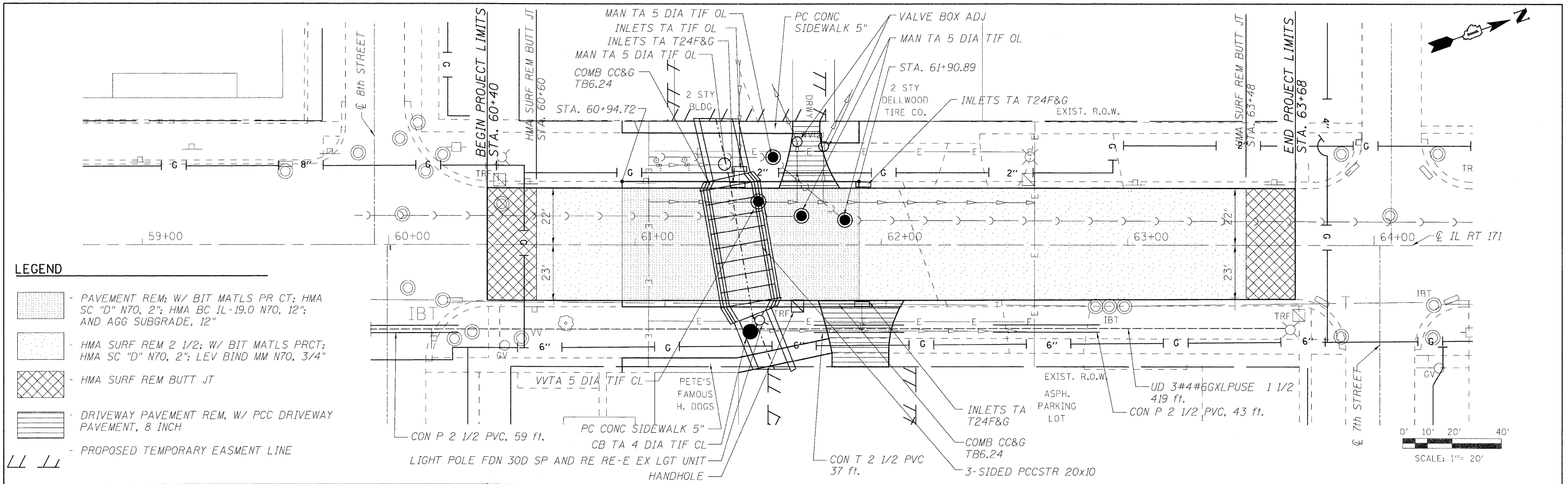
**SUMMARY OF QUANTITIES
IL ROUTE 171 OVER MILNE CREEK**

SCALE: NONE SHEET NO. 2 OF 2 SHEETS STA. 60+40 TO STA. 63+68

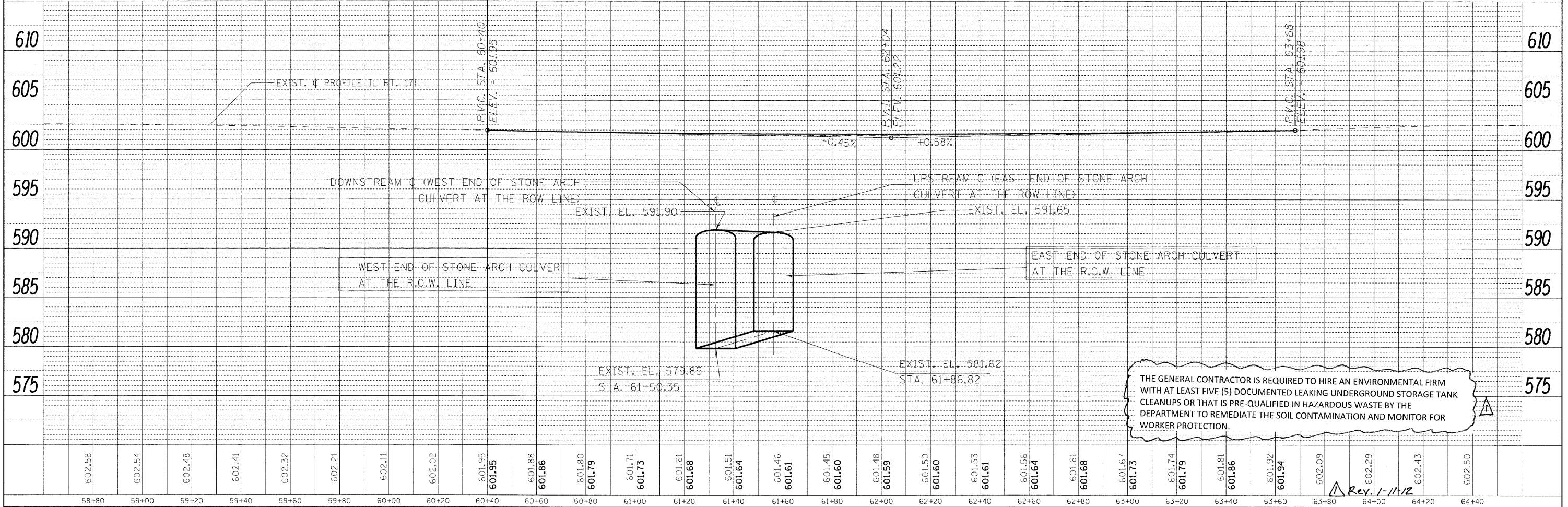
F.A.P. RTE.	SECTION	COUNTY	TOTAL SHEETS	SHEET NO.
577	D-T	WILL	44	4
D-91-265-06			CONTRACT NO. 60B10	
FED. ROAD DIST. NO. ILLINOIS FED. AID PROJECT				

DATE	
PLAN	
SURVEYED	
ALIGNED	
CHECKED	
BY	
NO. OF WAY CHECKED	
NO. OF FILE NAME	

DATE	
PROFILE	
SURVEYED	
CHECKED	
BY	
NO. OF WAY CHECKED	
NO. OF FILE NAME	



- LEGEND**
- PAVEMENT REM; W/ BIT MATLS PR CT; HMA SC "D" N70, 2"; HMA BC IL-19.0 N70, 12"; AND AGG SUBGRADE, 12"
 - HMA SURF REM 2 1/2; W/ BIT MATLS PRCT; HMA SC "D" N70, 2"; LEV BIND MM N70, 3/4"
 - HMA SURF REM BUTT JT
 - DRIVEWAY PAVEMENT REM, W/ PCC DRIVEWAY PAVEMENT, 8 INCH
 - PROPOSED TEMPORARY EASEMENT LINE



THE GENERAL CONTRACTOR IS REQUIRED TO HIRE AN ENVIRONMENTAL FIRM WITH AT LEAST FIVE (5) DOCUMENTED LEAKING UNDERGROUND STORAGE TANK CLEANUPS OR THAT IS PRE-QUALIFIED IN HAZARDOUS WASTE BY THE DEPARTMENT TO REMEDIATE THE SOIL CONTAMINATION AND MONITOR FOR WORKER PROTECTION.