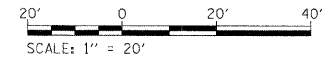
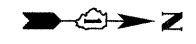
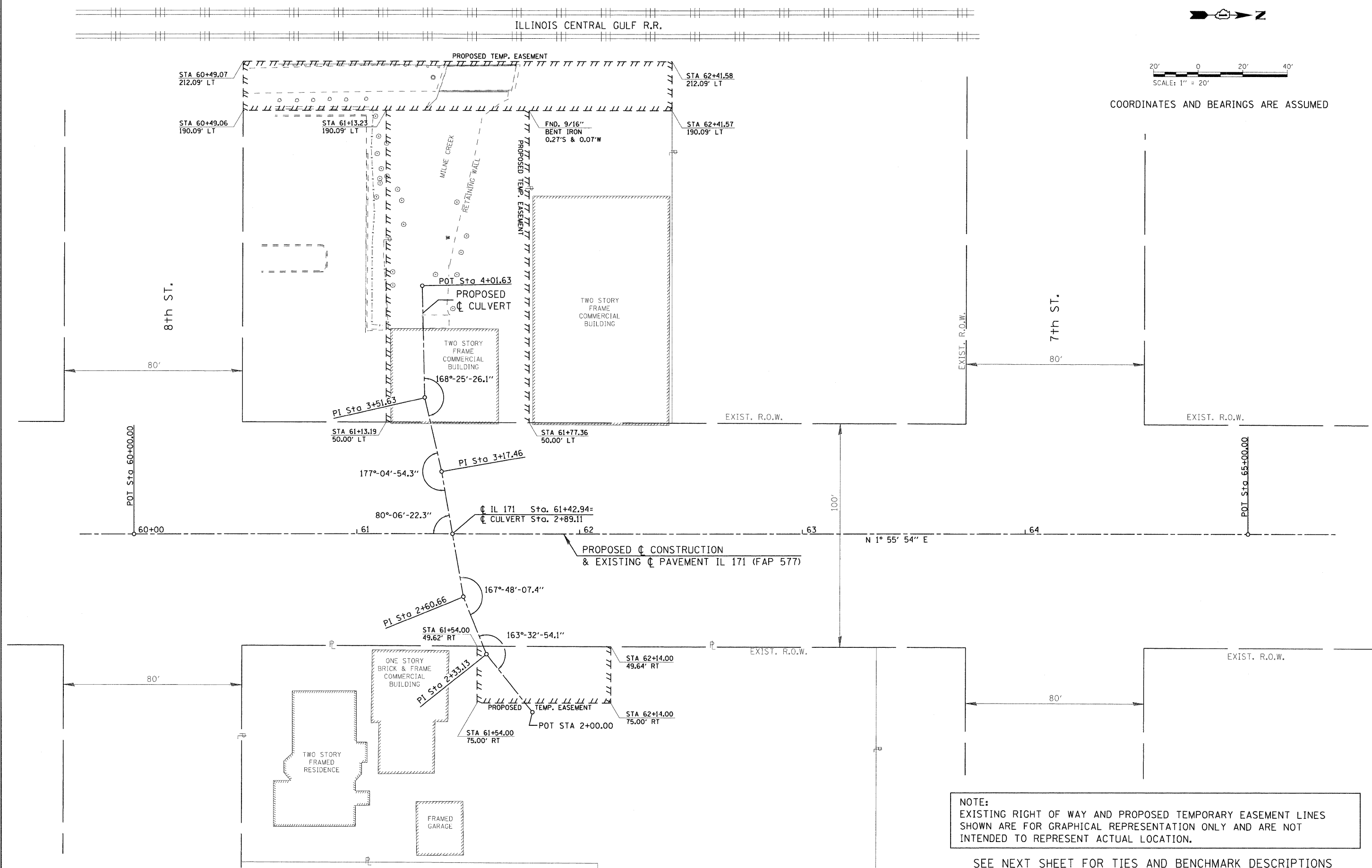


ILLINOIS CENTRAL GULF R.R.



COORDINATES AND BEARINGS ARE ASSUMED



NOTE:
EXISTING RIGHT OF WAY AND PROPOSED TEMPORARY EASEMENT LINES
SHOWN ARE FOR GRAPHICAL REPRESENTATION ONLY AND ARE NOT
INTENDED TO REPRESENT ACTUAL LOCATION.

SEE NEXT SHEET FOR TIES AND BENCHMARK DESCRIPTIONS

FILE NAME #FILEL#	USER NAME = #USER#	DESIGNED - GLW	REVISED -	STATE OF ILLINOIS DEPARTMENT OF TRANSPORTATION	ALIGNMENT, TIES & BENCHMARKS IL ROUTE 171 OVER MILNE CREEK	F.A.P. RTE. 577	SECTION D-T	COUNTY WILL	TOTAL SHEETS 44	SHEET NO. 10	
PLOT SCALE = #SCALE#	CHECKED - MJY	DATE - 10/14/2011	REVISED -			SCALE: 1" = 20'	SHEET NO. 1 OF 2 SHEETS	D-91-265-06		CONTRACT NO. 60B10	
PLOT DATE = #DATE#						STA. 60+00.00 TO STA. 65+00.00		FED. ROAD DIST. NO. ILLINOIS FED. AID PROJECT			