



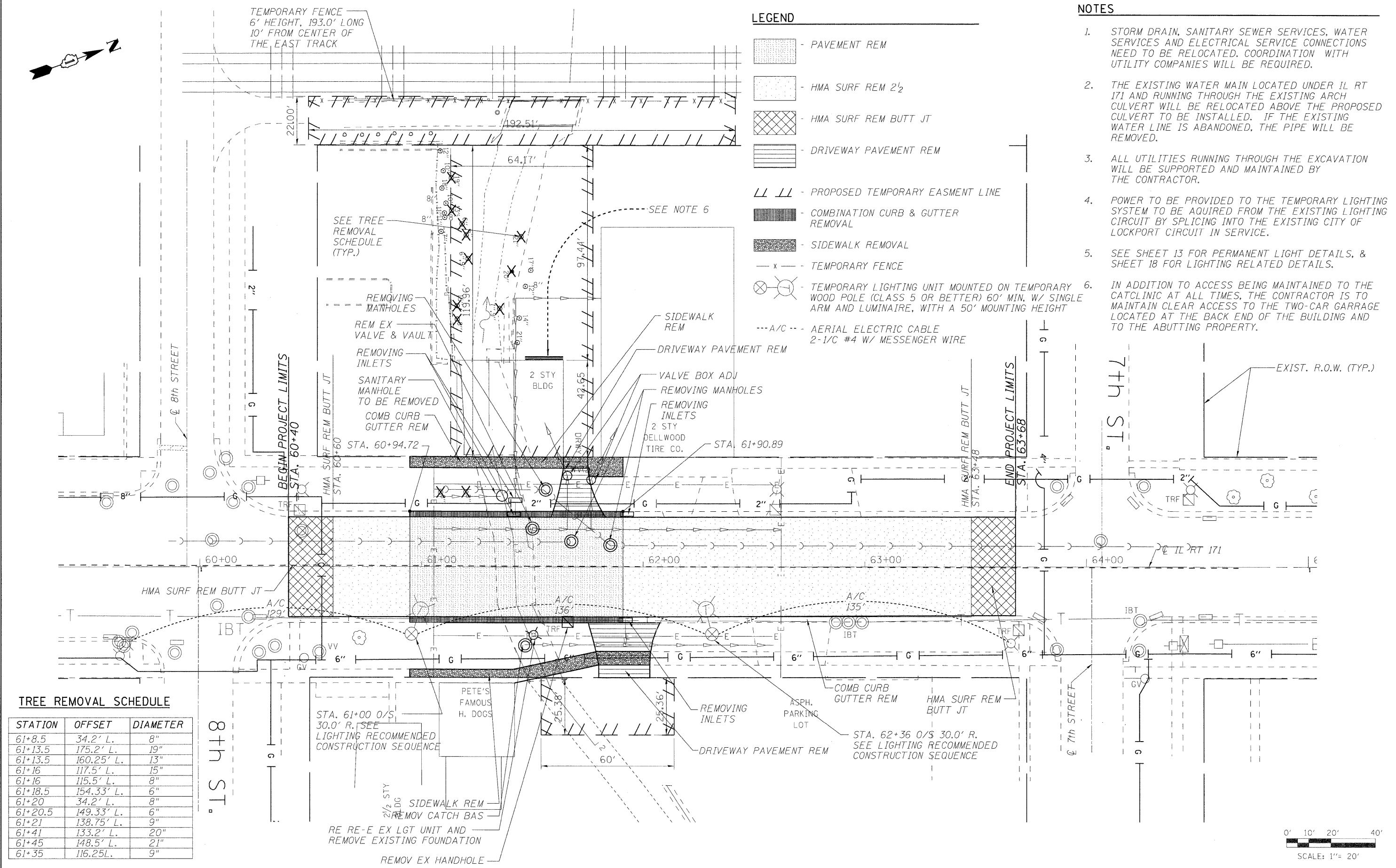
TEMPORARY FENCE
6' HEIGHT, 193.0' LONG
10' FROM CENTER OF
THE EAST TRACK

LEGEND

- PAVEMENT REM
- HMA SURF REM 2 1/2
- HMA SURF REM BUTT JT
- DRIVEWAY PAVEMENT REM
- PROPOSED TEMPORARY EASEMENT LINE
- COMBINATION CURB & GUTTER REMOVAL
- SIDEWALK REMOVAL
- TEMPORARY FENCE
- TEMPORARY LIGHTING UNIT MOUNTED ON TEMPORARY WOOD POLE (CLASS 5 OR BETTER) 60' MIN. W/ SINGLE ARM AND LUMINAIRE, WITH A 50' MOUNTING HEIGHT
- A/C - AERIAL ELECTRIC CABLE 2-1/C #4 W/ MESSENGER WIRE

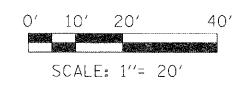
NOTES

1. STORM DRAIN, SANITARY SEWER SERVICES, WATER SERVICES AND ELECTRICAL SERVICE CONNECTIONS NEED TO BE RELOCATED. COORDINATION WITH UTILITY COMPANIES WILL BE REQUIRED.
2. THE EXISTING WATER MAIN LOCATED UNDER IL RT 171 AND RUNNING THROUGH THE EXISTING ARCH CULVERT WILL BE RELOCATED ABOVE THE PROPOSED CULVERT TO BE INSTALLED. IF THE EXISTING WATER LINE IS ABANDONED, THE PIPE WILL BE REMOVED.
3. ALL UTILITIES RUNNING THROUGH THE EXCAVATION WILL BE SUPPORTED AND MAINTAINED BY THE CONTRACTOR.
4. POWER TO BE PROVIDED TO THE TEMPORARY LIGHTING SYSTEM TO BE ACQUIRED FROM THE EXISTING LIGHTING CIRCUIT BY SPLICING INTO THE EXISTING CITY OF LOCKPORT CIRCUIT IN SERVICE.
5. SEE SHEET 13 FOR PERMANENT LIGHT DETAILS, & SHEET 18 FOR LIGHTING RELATED DETAILS.
6. IN ADDITION TO ACCESS BEING MAINTAINED TO THE CATCLINIC AT ALL TIMES, THE CONTRACTOR IS TO MAINTAIN CLEAR ACCESS TO THE TWO-CAR GARAGE LOCATED AT THE BACK END OF THE BUILDING AND TO THE ABUTTING PROPERTY.



TREE REMOVAL SCHEDULE

STATION	OFFSET	DIAMETER
61+8.5	34.2' L.	8"
61+13.5	175.2' L.	19"
61+13.5	160.25' L.	13"
61+16	117.5' L.	15"
61+16	115.5' L.	8"
61+18.5	154.33' L.	6"
61+20	34.2' L.	8"
61+20.5	149.33' L.	6"
61+21	138.75' L.	9"
61+41	133.2' L.	20"
61+45	148.5' L.	21"
61+35	116.25' L.	9"



LONCO, INC.
CONSULTING ENGINEERS
1560 WALL ST., SUITE 222
NAPERVILLE, ILLINOIS 60563 PH: (630) 571-9100

DESIGNED - SLV	REVISED -
DRAWN - SLV	REVISED -
CHECKED - MJY, ST	REVISED -
DATE - 10/14/2011	REVISED -

**STATE OF ILLINOIS
DEPARTMENT OF TRANSPORTATION**

**DEMOLITION AND UTILITY PLAN
IL ROUTE 171 OVER MILNE CREEK**

SCALE: NONE SHEET NO. 1 OF 1 SHEET STA. 60+40 TO STA. 63+68

F.A.P. RTE. 577	SECTION D-T	COUNTY WILL	TOTAL SHEETS 44	SHEET NO. 12
D-91-265-06		CONTRACT NO. 60B10		
FED. ROAD DIST. NO. ILLINOIS FED. AID PROJECT				