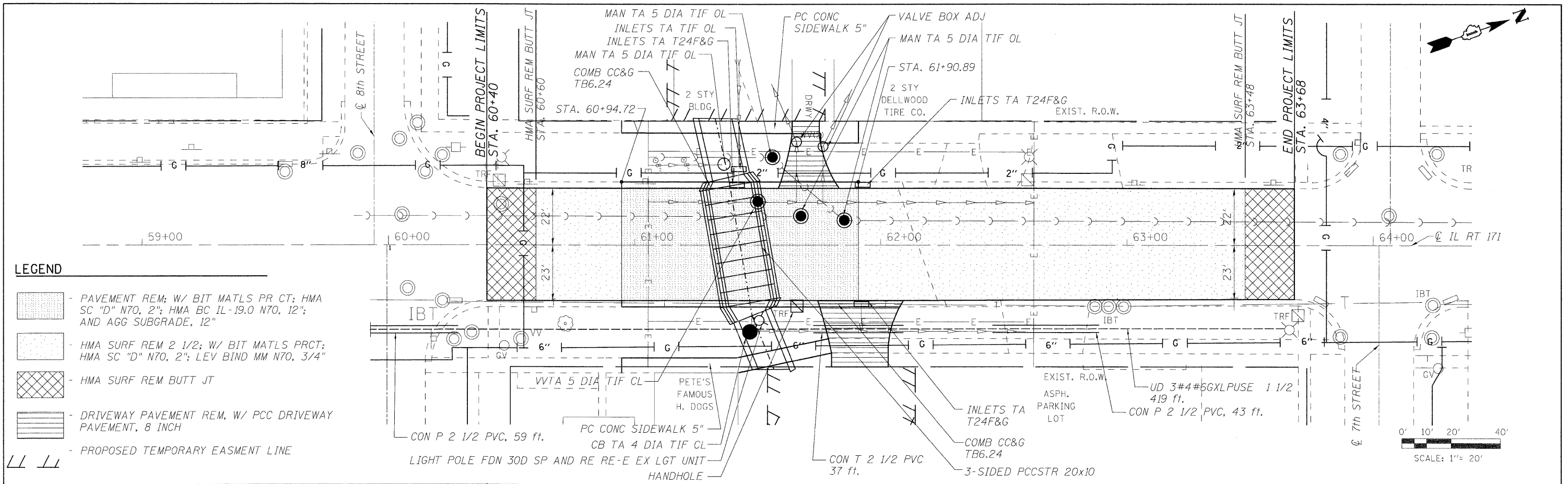
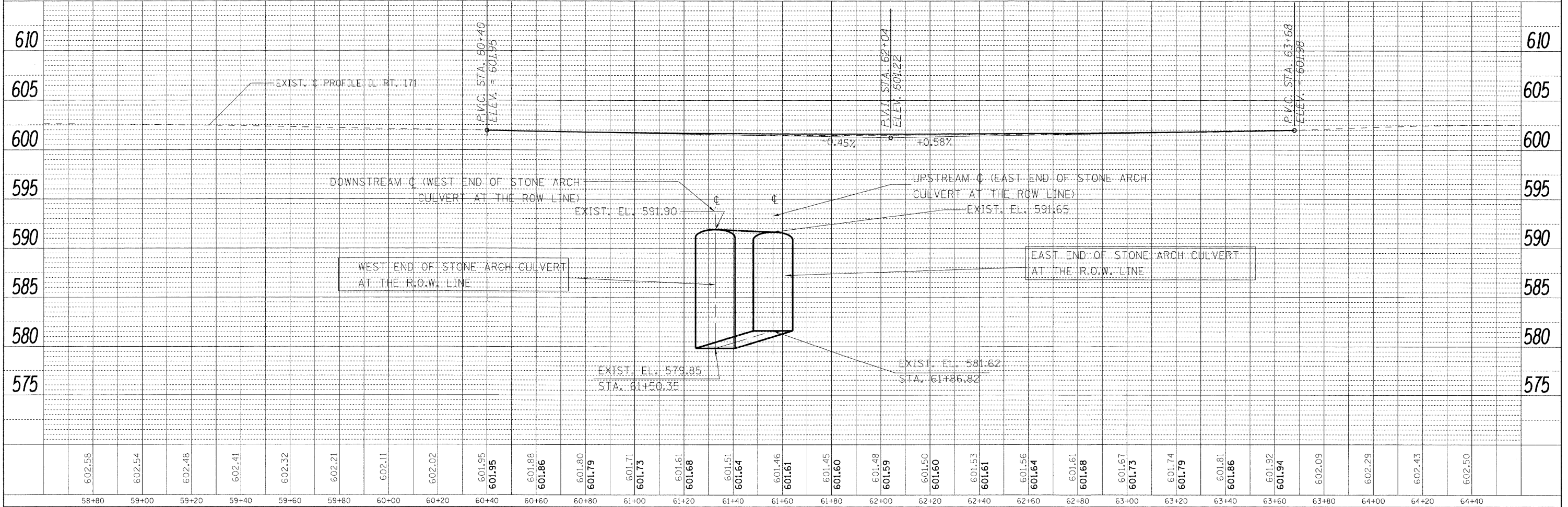


DATE	
PLAN	
SURVEYED	
ALIGNMENT CHECKED	
GRADES CHECKED	
STRUCTURE NOTATIONS CHECKED	
NOTE BOOK NO.	
BY	
DATE	
PROFILER	
SURVEYED	
GRADES CHECKED	
STRUCTURE NOTATIONS CHECKED	
NOTE BOOK NO.	
BY	
DATE	



- LEGEND**
- PAVEMENT REM; W/ BIT MATLS PR CT; HMA SC "D" N70, 2"; HMA BC IL -19.0 N70, 12"; AND AGG SUBGRADE, 12"
 - HMA SURF REM 2 1/2; W/ BIT MATLS PRCT; HMA SC "D" N70, 2"; LEV BIND MM N70, 3/4"
 - HMA SURF REM BUTT JT
 - DRIVEWAY PAVEMENT REM, W/ PCC DRIVEWAY PAVEMENT, 8 INCH
 - PROPOSED TEMPORARY EASEMENT LINE



LOWCO, INC.
 CONSULTING ENGINEERS
 1560 WALL ST, SUITE 222
 NAPERVILLE, ILLINOIS 60563 PH: 630/577-9100

DESIGNED - ST	REVISED -
DRAWN - ST	REVISED -
CHECKED - MJY, SLV	REVISED -
DATE - 10/14/2011	REVISED -

STATE OF ILLINOIS
DEPARTMENT OF TRANSPORTATION

PLAN AND PROFILE	
IL ROUTE 171 OVER MILNE CREEK	
SCALE: NONE	SHEET NO. 1 OF 1 SHEETS
STA. 60+40 TO 63+68	

F.A. RTE. 577	SECTION D-T	COUNTY WILL	TOTAL SHEETS 44	SHEET NO. 13
D-91-265-06			CONTRACT NO. 60B10	
ILLINOIS FED. AID PROJECT				