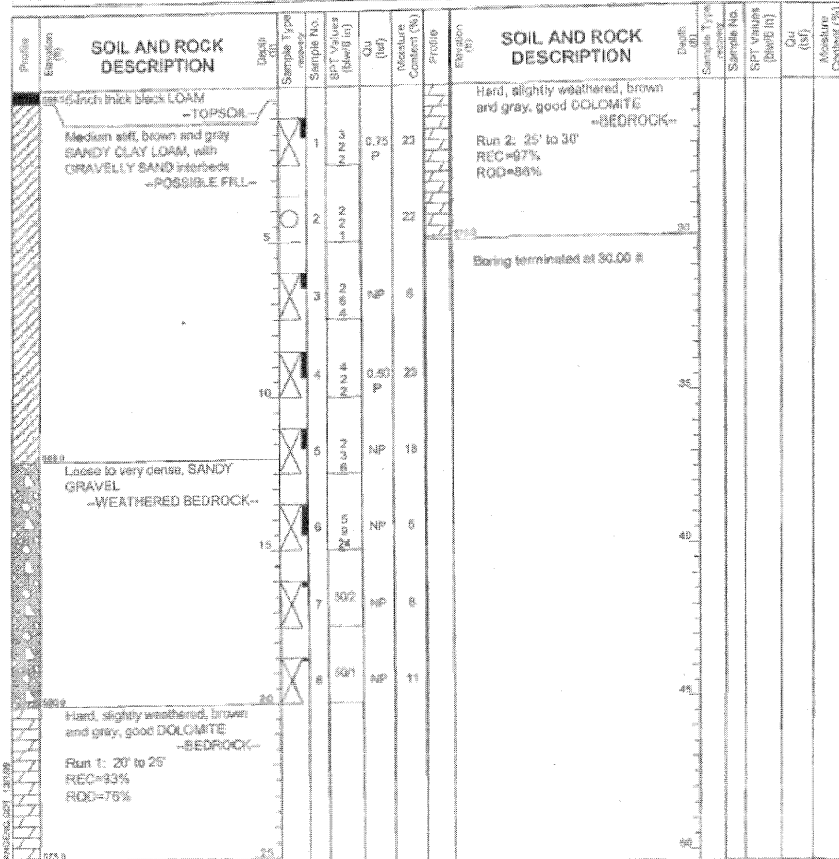


W Wang Engineering, Inc.
 Consulting Engineers and
 Geotechnical Engineers
 wangeng@wangeng.com
 1145 North Main Street
 Lombard, Illinois 60146
 Telephone: 630.953.9928
 Fax: 630.953.9936

BORING LOG RC-03
 WBI Job No.: 555-13-10

Date: NAD
 Elevation: 899.05 ft
 North: 1793331.00 ft
 East: 1099943.55 ft
 Station:
 Offset:

Client: Illinois Department of Transportation
 Project: IL RT 171 over Milne Creek
 Location: Lockport, Illinois



GENERAL NOTES

Begin Drilling: 11-18-2009 Complete Drilling: 11-18-2009
 Drilling Contractor: Wang Testing Service Drill Rig: Mobile B-57 TMR
 Diner: K&J Logger: F. Bozga Checked by: N. Davis
 Drilling Method: 3.25 IDA HSA, Mobile Automatic Hammer

WATER LEVEL DATA

While Drilling: DRY
 At Completion of Drilling: DRY
 Time After Drilling: NA
 Depth to Water: NA

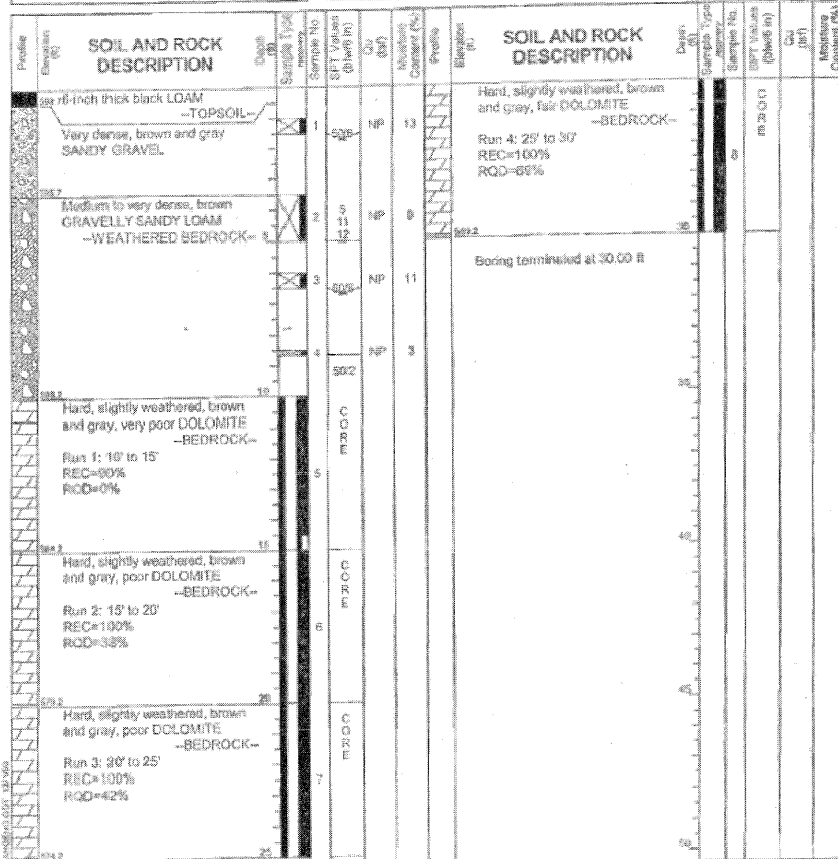
The stratigraphic lines represent the approximate boundary between soil types. The actual location may be different.

W Wang Engineering, Inc.
 Consulting Engineers and
 Geotechnical Engineers
 wangeng@wangeng.com
 1145 North Main Street
 Lombard, Illinois 60146
 Telephone: 630.953.9928
 Fax: 630.953.9936

BORING LOG RC-04
 WBI Job No.: 555-13-10

Date: NAD
 Elevation: 899.20 ft
 North: 1793338.84 ft
 East: 1099922.89 ft
 Station:
 Offset:

Client: Illinois Department of Transportation
 Project: IL RT 171 over Milne Creek
 Location: Lockport, Illinois



GENERAL NOTES

Begin Drilling: 11-18-2009 Complete Drilling: 11-19-2009
 Drilling Contractor: Wang Testing Service Drill Rig: Mobile B-57 TMR
 Diner: K&J Logger: F. Bozga Checked by: N. Davis
 Drilling Method: 3.25 IDA HSA, Mobile Automatic Hammer

WATER LEVEL DATA

While Drilling: DRY
 At Completion of Drilling: DRY
 Time After Drilling: NA
 Depth to Water: NA

The stratigraphic lines represent the approximate boundary between soil types. The actual location may be different.