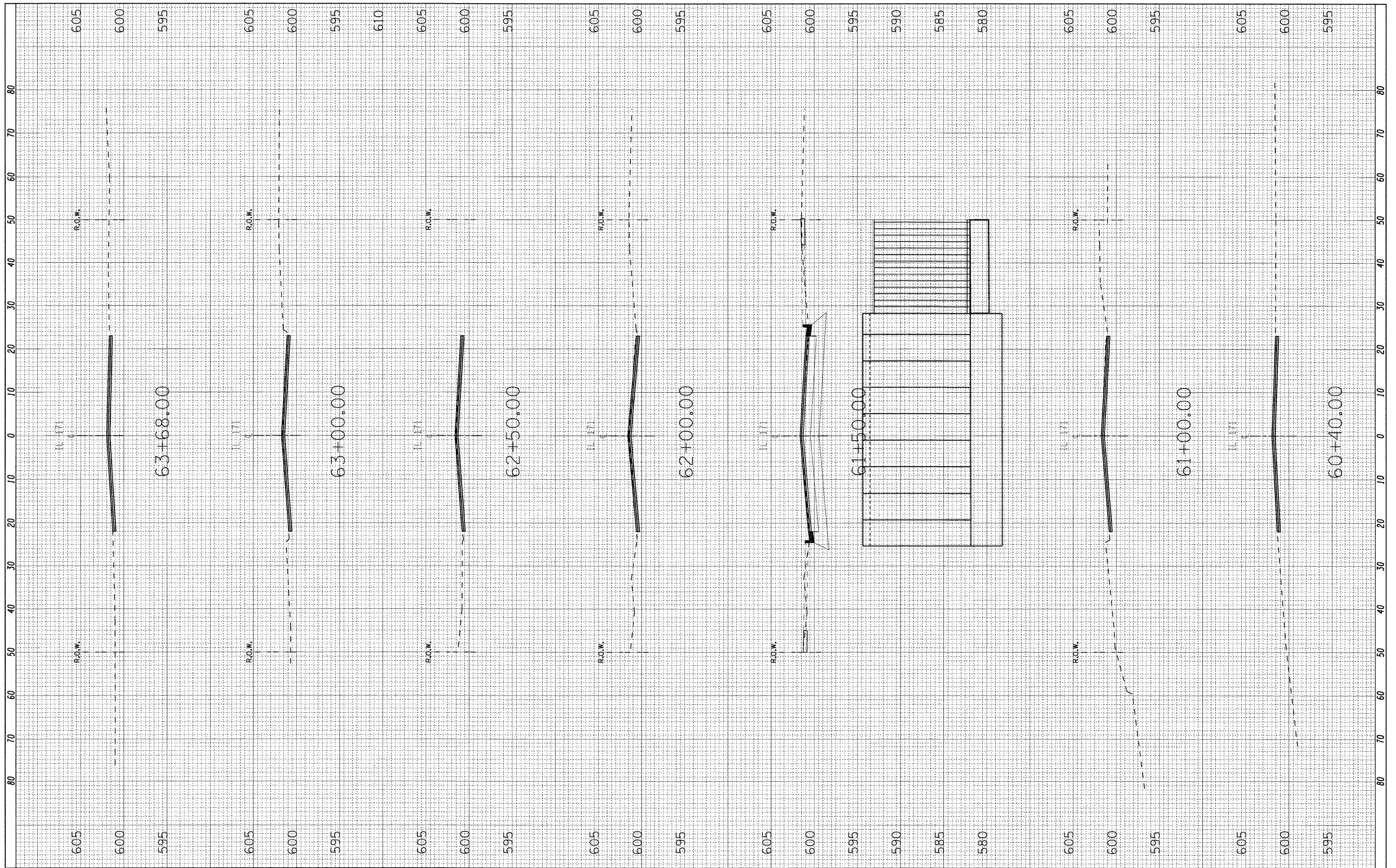


FINAL SURVEY NO.	BY	DATE
SURVEYED		
NOTE BOOK		
AREAS CHECKED		

ORIGINAL SURVEY NO.	BY	DATE
SURVEYED		
NOTE BOOK		
AREAS CHECKED		



**LOCO, INC.**  
 CONSULTING ENGINEERS  
 1560 WALL ST, SUITE 222  
 NAPERVILLE, ILLINOIS 60563 PH: (630) 577-9100

DESIGNED - ST  
 DRAWN - ST  
 CHECKED - MJY, SLV  
 DATE - 10/14/2011

REVISED -  
 REVISED -  
 REVISED -  
 REVISED -

**STATE OF ILLINOIS  
 DEPARTMENT OF TRANSPORTATION**

**IL 171 CROSS SECTIONS  
 IL ROUTE 171 OVER MILNE CREEK**  
 SCALE: 1" = 20' SHEET NO. 1 OF 1 SHEETS STA. 60+40 TO STA. 63+68

F.A.P. R.T.E. 577	SECTION D-T	COUNTY WILL	TOTAL SHEETS 44	SHEET NO. 31
D-91-438-08		CONTRACT NO. 60B10		

ILLINOIS FED. AID PROJECT