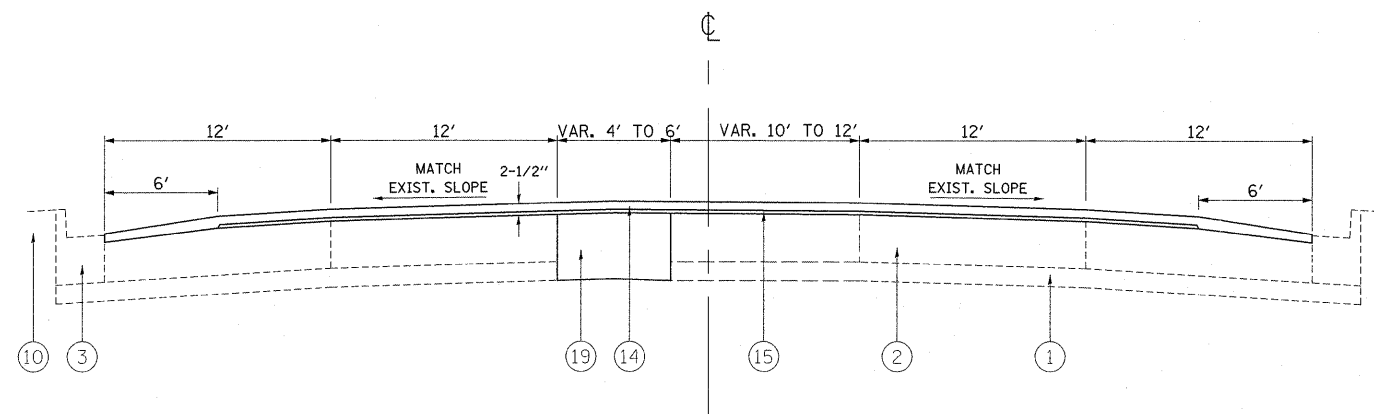


**IL 21 - MILWAUKEE AVE.
EXISTING TYPICAL SECTION**

STA. 34+40 TO STA. 35+23
 STA. 50+32 TO STA. 55+78
 STA. 70+90 TO STA. 72+39



**IL 21 - MILWAUKEE AVE.
PROPOSED TYPICAL SECTION**

STA. 34+40 TO STA. 35+23
 STA. 50+32 TO STA. 55+78
 STA. 70+90 TO STA. 72+39

NOTES:

- LOCATIONS FOR MEDIAN REMOVAL:
 STA 34+40 TO STA 35+23
 STA 50+32 TO STA 51+25
 STA 51+79 TO STA 55+25
 STA 70+90 TO STA 72+39

REMOVAL OF MEDIAN SURFACE, CURB AND GUTTER, SUB-BASE, AND SAND FILL IS INCLUDED IN THE COST OF MEDIAN REMOVAL

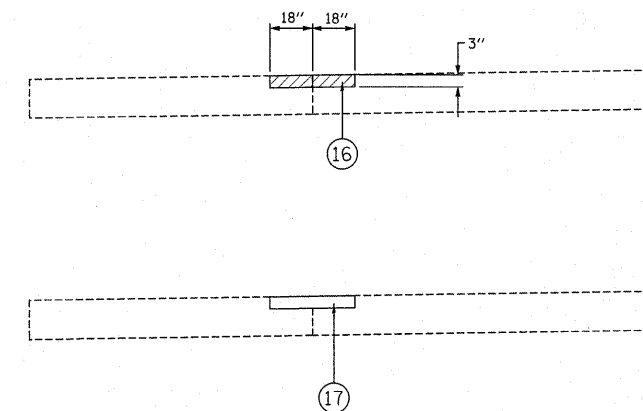
LEGEND

- ① EXISTING STABILIZED SUB-BASE, 4"
- ② EXISTING PCC PAVEMENT, 10"±
- ③ EXISTING COMBINATION CONCRETE CURB AND GUTTER
- ④ EXISTING SB MEDIAN
- ⑤ EXISTING SM MEDIAN
- ⑥ EXISTING STABILIZED MEDIAN SURFACE, 12"
- ⑦ EXISTING CORRUGATED MEDIAN
- ⑧ EXISTING CONCRETE MEDIAN SURFACE, 4"
- ⑨ EXISTING SAND FILL
- ⑩ EXISTING TOP SOIL AND SODDING
- ⑪ PROPOSED MEDIAN REMOVAL PARTIAL DEPTH
- ⑫ PROPOSED HMA SURFACE REMOVAL, 2-1/2"
- ⑬ PROPOSED PCC SURFACE REMOVAL, VARIABLE DEPTH
- ⑭ PROPOSED POLYMERIZED HOT-MIX ASPHALT SURFACE COURSE, MIX "F", N90, 1-3/4"
- ⑮ PROPOSED POLYMERIZED LEVELING BINDER (MACHINE METHOD), IL-4.75, N50, 3/4"
- ⑯ PROPOSED PARTIAL DEPTH REMOVAL, 3"
- ⑰ PROPOSED HMA BINDER COURSE, IL-19.0, N70, 3"
(NOTE: FOR LONGITUDINAL JOINT REPAIR, SEE DETAIL ON SHEET #6)
- ⑱ PROPOSED MEDIAN REMOVAL
- ⑲ PROPOSED CLASS D PATCHES, TYPE IV, 10 INCH

THE CONTRACTOR SHALL PATCH FIRST BEFORE MILLING

**DETAIL A
LONGITUDINAL JOINT REPAIR (TYP.)**

(LOCATIONS TO BE DETERMINED BY ENGINEER)



FILE NAME = c:\pvt_work\pvt\dot\tariqfm\0238476\0107	USER NAME = tariqfm 11-sht-plan.dgn	DESIGNED - DRAWN -	REVISED - REVISED -	STATE OF ILLINOIS DEPARTMENT OF TRANSPORTATION	IL 21 (EUCLID AVE. TO GLENVIEW RD.) EXISTING AND PROPOSED TYPICAL SECTIONS				F.A.P. RTE. 374	SECTION 211K-RS-1	COUNTY COOK	TOTAL SHEETS 27	SHEET NO. 6
PLOT SCALE = 5/8" = 1' - 0"					SCALE:	SHEET NO.	OF	SHEETS	STA.	TO STA.	CONTRACT NO. 60M07		
PLOT DATE = 10/18/2011					DATE	ILLINOIS FED. AID PROJECT							