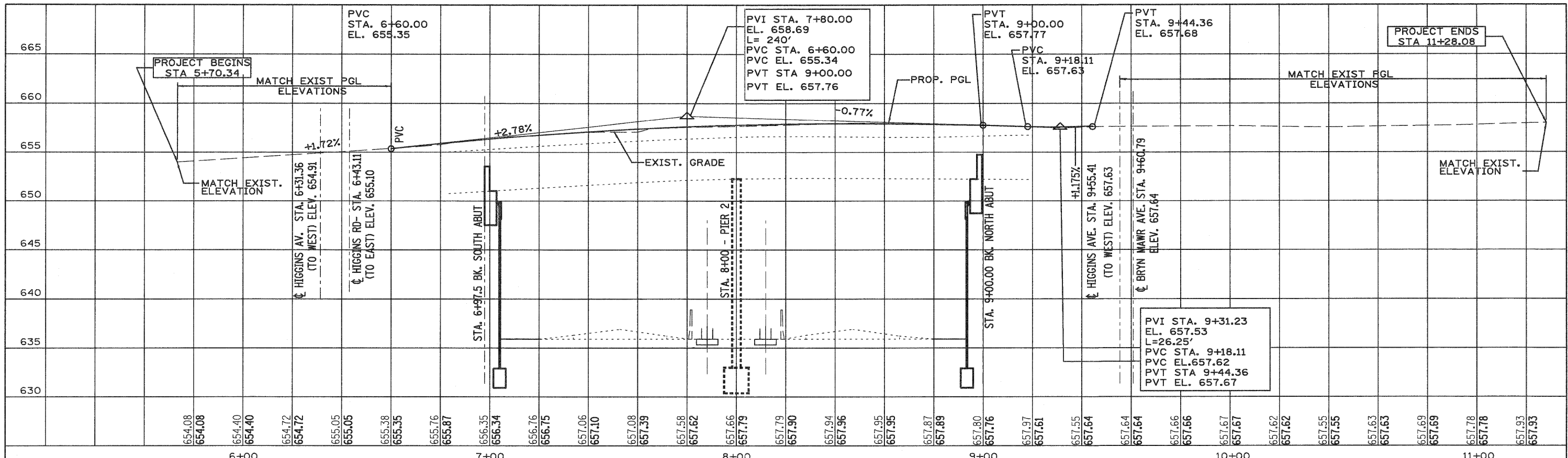


DATE	
BY	
SURVEYED	
PLOTTED	
GRADES CHECKED	
STRUCTURE	
NOTATIONS CHECKED	
NOTE BOOK NO.	
CADD FILE NAME	

DATE	
BY	
SURVEYED	
PLOTTED	
GRADES CHECKED	
STRUCTURE	
NOTATIONS CHECKED	
NOTE BOOK NO.	
CADD FILE NAME	



**NOTE:**  
 THE PROPOSED PGL ELEVATIONS AND GRADES BETWEEN STA. 5+70.54 AND STA. 6+60.00 AND BETWEEN STA. 9+55.41 AND STA. 11+28.08 SHALL MATCH EXISTING ELEVATIONS.

**ABNA**  
 DESIGN FIRM REG. 184.002117  
 9901 S. Western Ave.  
 Chicago, IL 60643  
 Ph. 773-881-4788  
 F: 773.239.3728

DESIGNED	RT	REVISED	-
CHECKED	TPP	REVISED	-
DRAWN	JJE	REVISED	-
CHECKED	TPP	REVISED	-

**STATE OF ILLINOIS  
 DEPARTMENT OF TRANSPORTATION**

**ORIOLE AVENUE AT I-90  
 STRUCTURE NO. 016-1101**  
 ROADWAY PROFILE  
 ORIOLE AVE. AT I-90  
 SCALE: 1" = 20' SHEET NO. X OF X SHEETS STA. 5+70.34 TO STA. 1+28.08

F.A.I. RTE.	SECTION	COUNTY	TOTAL SHEETS	SHEET NO.
90	1515.1-B	COOK	101	26
CONTRACT NO. 60M79				
ILLINOIS FED. AID PROJECT				