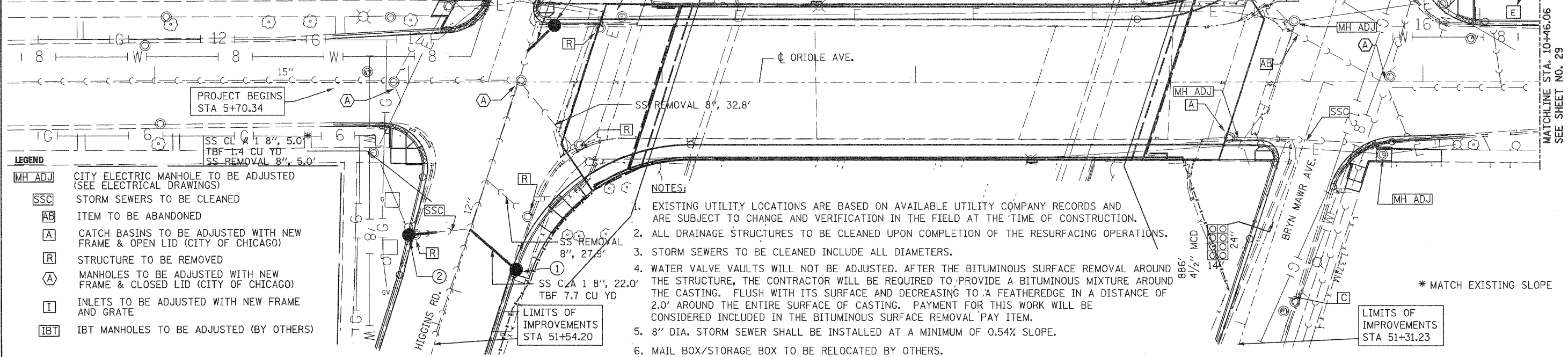


- ① STA. 50+70.19, 20.32' LT  
CB A 4' D T1 FOL CHG  
ELEV. 654.46  
INV. 650.52
- ② STA. 50+70.19, 21.02' RT  
CB A 4' D T1 FOL CHG  
ELEV. 654.40  
INV. 650.26
- ③ STA. 6+57.68, 22.94' LT  
CB A 4' D T1 FOL CHG  
ELEV. 654.96  
INV. 650.92
- ④ STA. 49+39.95, 21.26' RT  
CB A 4' D T1 FOL CHG  
ELEV. 657.11  
INV. 652.85

**NOTE:**  
OFFSETS & ELEVATIONS FOR PROPOSED DRAINAGE STRUCTURES ARE SHOWN TO EDGE OF PAVEMENT.

SS REMOVAL: 8", 5.0'  
\*SS CLA: 1 8", 5.0'  
TBF 1.4 CU YD

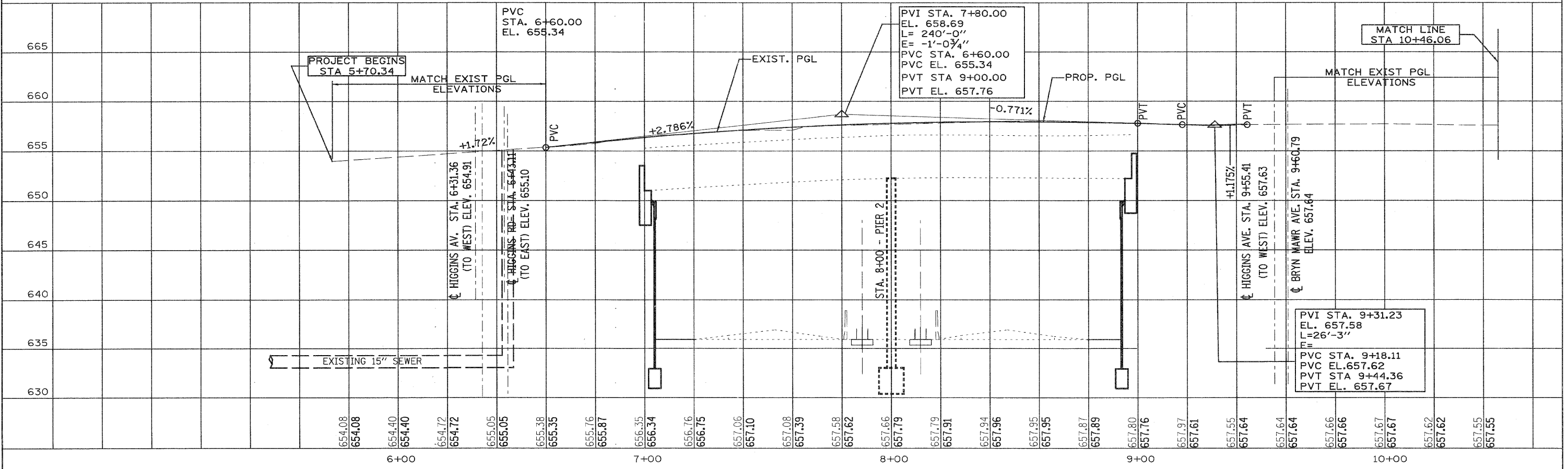


- LEGEND**
- MH ADJ CITY ELECTRIC MANHOLE TO BE ADJUSTED (SEE ELECTRICAL DRAWINGS)
  - SSC STORM SEWERS TO BE CLEANED
  - AB ITEM TO BE ABANDONED
  - A CATCH BASINS TO BE ADJUSTED WITH NEW FRAME & OPEN LID (CITY OF CHICAGO)
  - R STRUCTURE TO BE REMOVED
  - A MANHOLES TO BE ADJUSTED WITH NEW FRAME & CLOSED LID (CITY OF CHICAGO)
  - I INLETS TO BE ADJUSTED WITH NEW FRAME AND GRATE
  - IBT IBT MANHOLES TO BE ADJUSTED (BY OTHERS)

- NOTES:**
1. EXISTING UTILITY LOCATIONS ARE BASED ON AVAILABLE UTILITY COMPANY RECORDS AND ARE SUBJECT TO CHANGE AND VERIFICATION IN THE FIELD AT THE TIME OF CONSTRUCTION.
  2. ALL DRAINAGE STRUCTURES TO BE CLEANED UPON COMPLETION OF THE RESURFACING OPERATIONS.
  3. STORM SEWERS TO BE CLEANED INCLUDE ALL DIAMETERS.
  4. WATER VALVE VAULTS WILL NOT BE ADJUSTED. AFTER THE BITUMINOUS SURFACE REMOVAL AROUND THE STRUCTURE, THE CONTRACTOR WILL BE REQUIRED TO PROVIDE A BITUMINOUS MIXTURE AROUND THE CASTING. FLUSH WITH ITS SURFACE AND DECREASING TO A FEATHEREDGE IN A DISTANCE OF 2.0' AROUND THE ENTIRE SURFACE OF CASTING. PAYMENT FOR THIS WORK WILL BE CONSIDERED INCLUDED IN THE BITUMINOUS SURFACE REMOVAL PAY ITEM.
  5. 8" DIA. STORM SEWER SHALL BE INSTALLED AT A MINIMUM OF 0.54% SLOPE.
  6. MAIL BOX/STORAGE BOX TO BE RELOCATED BY OTHERS.

DATE	
BY	
REVISIONS	
NO.	
PLAN	
NO.	
DATE	
BY	
REVISIONS	
NO.	

DATE	
BY	
REVISIONS	
NO.	
PROFILE	
NO.	
DATE	
BY	
REVISIONS	
NO.	



9901 S. Western Ave.  
Chicago, IL 60643  
Ph. 773-881-4788  
F: 773.239.3728

DESIGNED	TS	REVISED	-
CHECKED	TPP	REVISED	-
DRAWN	JS	REVISED	-
CHECKED	TPP	REVISED	-

STATE OF ILLINOIS  
DEPARTMENT OF TRANSPORTATION

ORIOLE AVENUE AT I-90  
STRUCTURE NO. 016-1101

DRAINAGE AND UTILITY PLAN  
ORIOLE AVENUE AT I-90

F.A.I. RTE.	SECTION	COUNTY	TOTAL SHEETS	SHEET NO.
90	1515.1-B	COOK	101	28
SCALE: 1" = 20'				SHEET NO. X OF X SHEETS
STA. 0+930.00 TO STA. 1+075.000				CONTRACT NO. 60M79
ILLINOIS FED. AID PROJECT				