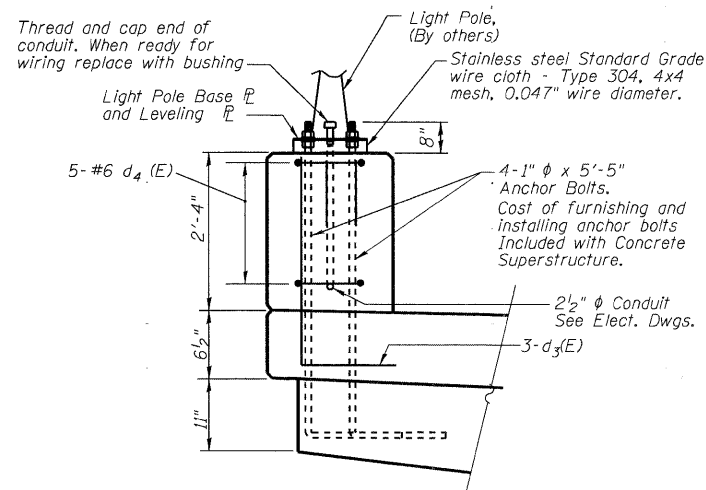
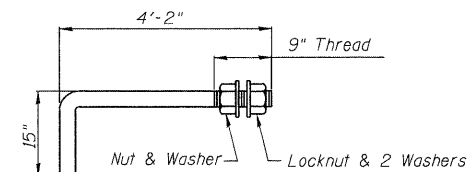


PLAN LIGHT POLE SUPPORT

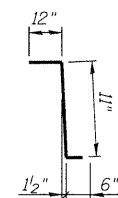
NOTE:
 Light Pole Anchor Bolt locations shown are for information only. Verify location with light pole base plate



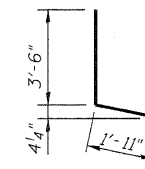
SECTION C-C



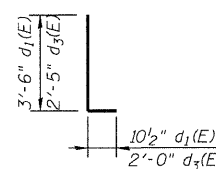
Provide 3 flat washers 1 nut and 1 locknut. All nuts and washers shall be galvanized.
1" ϕ ANCHOR BOLT
 (8 Required)



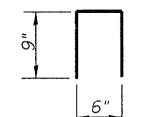
BAR c (E)



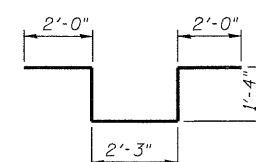
BAR d (E)



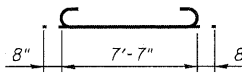
BAR d₁(E)
BAR d₃(E)



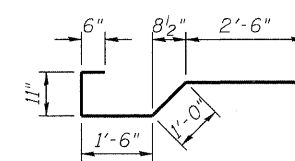
BAR d₂(E)



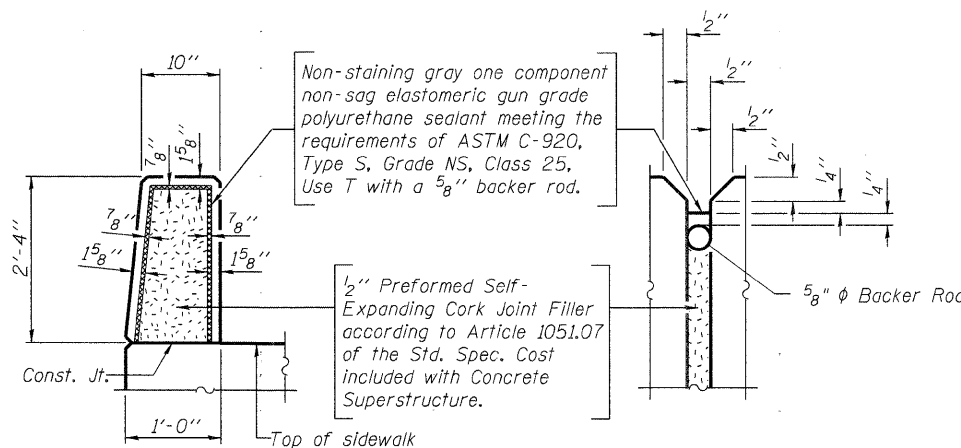
BAR d₄(E)



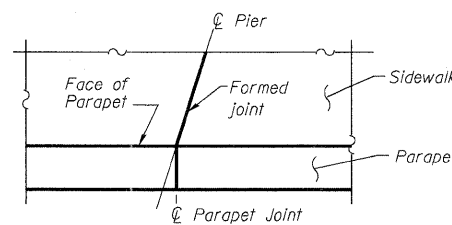
BAR a₃(E)



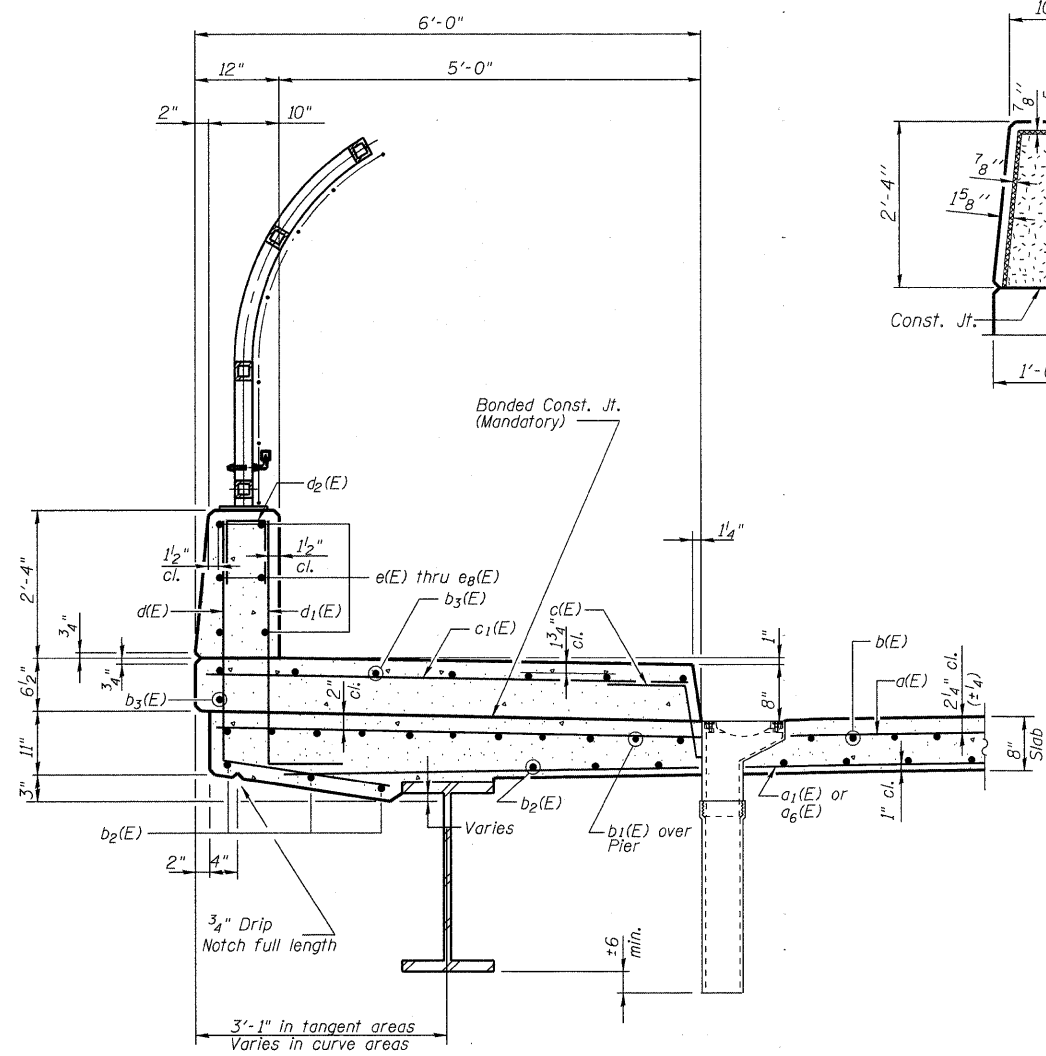
BAR x(E)



PARAPET JOINT DETAILS



TYP. DETAIL AT PIER



TYPICAL SIDEWALK SECTION

**SUPERSTRUCTURE
 BILL OF MATERIAL**

Bar	No.	Size	Length	Shape
a(E)	868	#5	31'-10"	—
a ₁ (E)	282	#5	34'-3"	—
a ₂ (E)	32	#5	1'-6"	—
a ₃ (E)	42	#6	8'-11"	U
a ₄ (E)	4	#6	35'-0"	—
a ₅ (E)	16	#6	35'-0"	—
a ₆ (E)	252	#5	29'-1"	—
b(E)	496	#5	27'-2"	—
b ₁ (E)	60	#6	40'-0"	—
b ₂ (E)	481	#5	24'-4"	—
b ₃ (E)	112	#5	30'-6"	—
c(E)	400	#5	2'-5"	—
c ₁ (E)	400	#5	5'-7"	—
d(E)	400	#4	5'-5"	—
d ₁ (E)	400	#6	4'-4 1/2"	—
d ₂ (E)	112	#5	2'-0"	—
d ₃ (E)	6	#6	4'-5"	—
d ₄ (E)	10	#6	8'-11"	—
e(E)	6	#4	6'-0"	—
e ₁ (E)	12	#4	19'-8"	—
e ₂ (E)	12	#4	9'-8"	—
e ₃ (E)	12	#4	13'-8"	—
e ₄ (E)	24	#4	15'-8"	—
e ₅ (E)	42	#4	14'-8"	—
e ₆ (E)	6	#4	7'-4"	—
e ₇ (E)	6	#4	6'-5"	—
e ₈ (E)	42	#4	16'-8"	—
x(E)	128	#5	6'-5"	—
Reinforcement bars, epoxy coated			Pounds	91,850
Concrete Superstructure			Cu. Yds.	432.6



9901 S. Western Ave.
 Chicago, IL 60643
 Ph. 773-881-4788
 F: 773.239.3728

DESIGNED - SEA
 CHECKED - RJL
 DRAWN - JJE / SCS
 CHECKED - SEA

REVISED -
 REVISED -
 REVISED -
 REVISED -

**STATE OF ILLINOIS
 DEPARTMENT OF TRANSPORTATION**

**SIDEWALK AND PARAPET DETAILS
 STRUCTURE NO. 016-1101**

SHEET NO. 11 OF 36 SHEETS

F.A.U. RTE.	SECTION	COUNTY	TOTAL SHEETS	SHEET NO.
90	1515.1-B	COOK	101	54
STA. TO STA.	CONTRACT NO. 60M79			
FED. ROAD DIST. NO.	ILLINOIS FED. AID PROJECT			