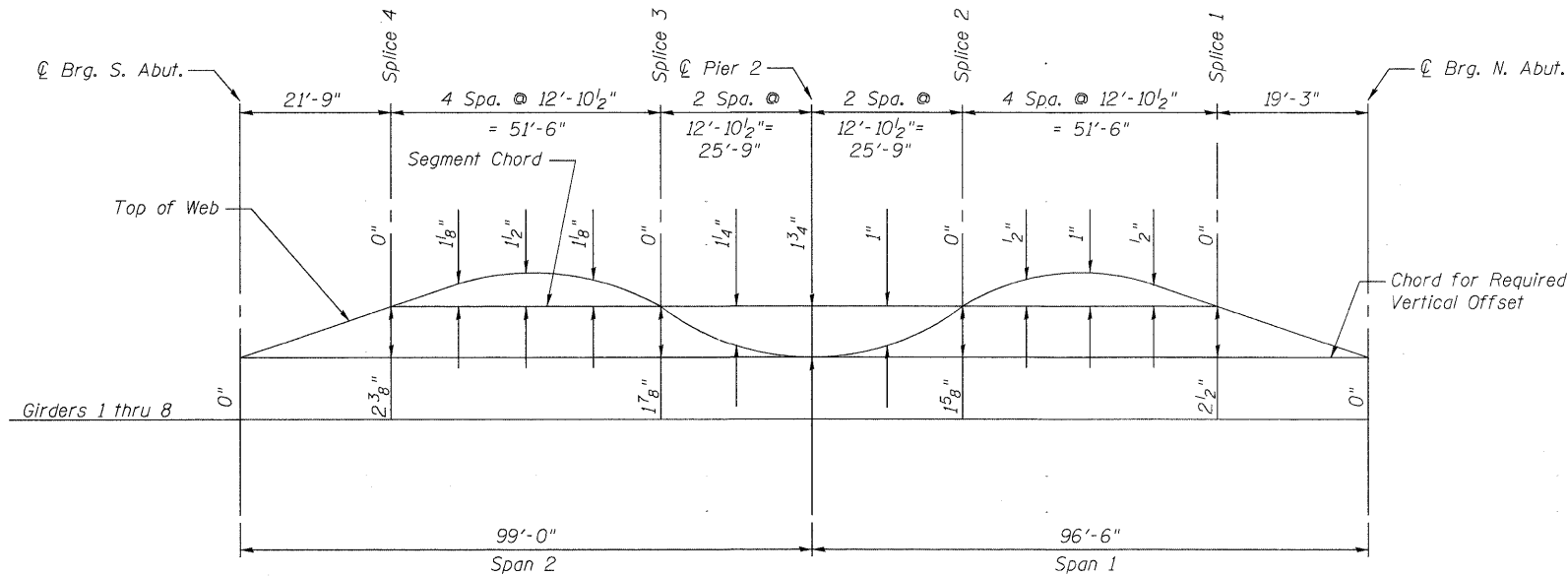
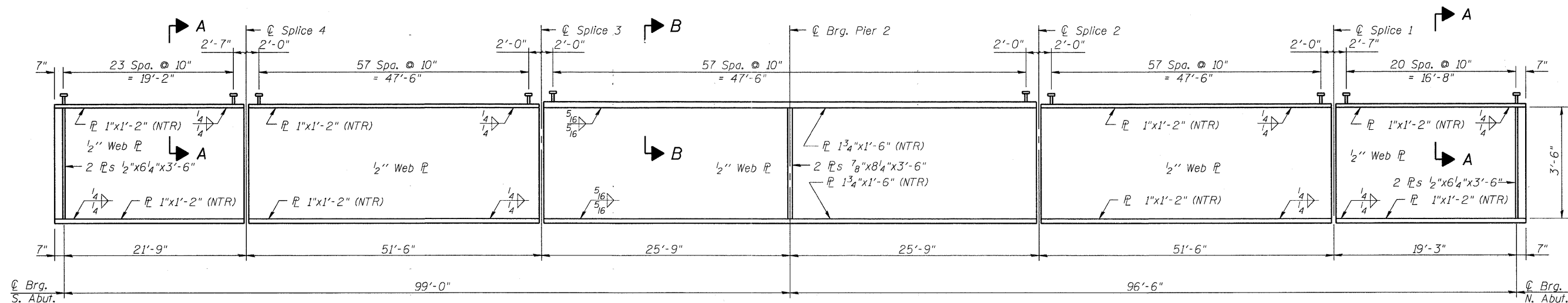


JA\2009\246 IDOT PTB I53 Item 2\N\Cadd\Design\016-1101\W.O.15 Oriole Steel Plans\016-1101.dgn 12:38:28 PM 12/7/2011

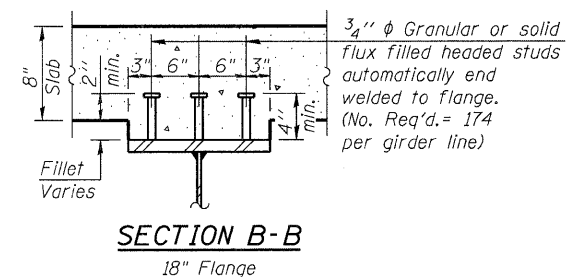
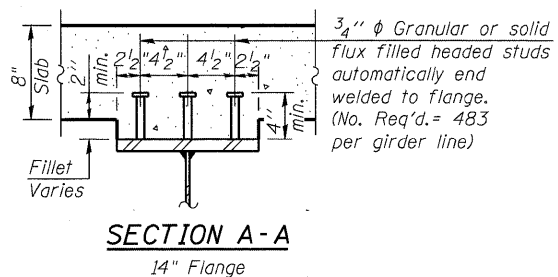


**SEGMENT CAMBER AND OFFSET**



**GIRDER ELEVATION 1 thru 8**

"NTR" denotes plates to which notch toughness requirements are applicable.  
 All web plates shall be subject to notch toughness requirements.  
 The top of the top flange shall not be galvanized. Typical all sections on all girders.



9901 S. Western Ave.  
 Chicago, IL 60643  
 Ph. 773-881-4788  
 F: 773.239.3728

DESIGNED - TBS	REVISED -
CHECKED - R.J.L.	REVISED -
DRAWN - J.J.E.	REVISED -
CHECKED - SEA	REVISED -

**STATE OF ILLINOIS**  
**DEPARTMENT OF TRANSPORTATION**

**GIRDER ELEVATION**  
**STRUCTURE NO. 016-1101**

SHEET NO. 16 OF 36 SHEETS

F.A.U. RTE. 90	SECTION 1515.1-B	COUNTY COOK	TOTAL SHEETS 101	SHEET NO. 59
STA. TO STA.		CONTRACT NO. 60M79		
FED. ROAD DIST. NO.		ILLINOIS FED. AID PROJECT		