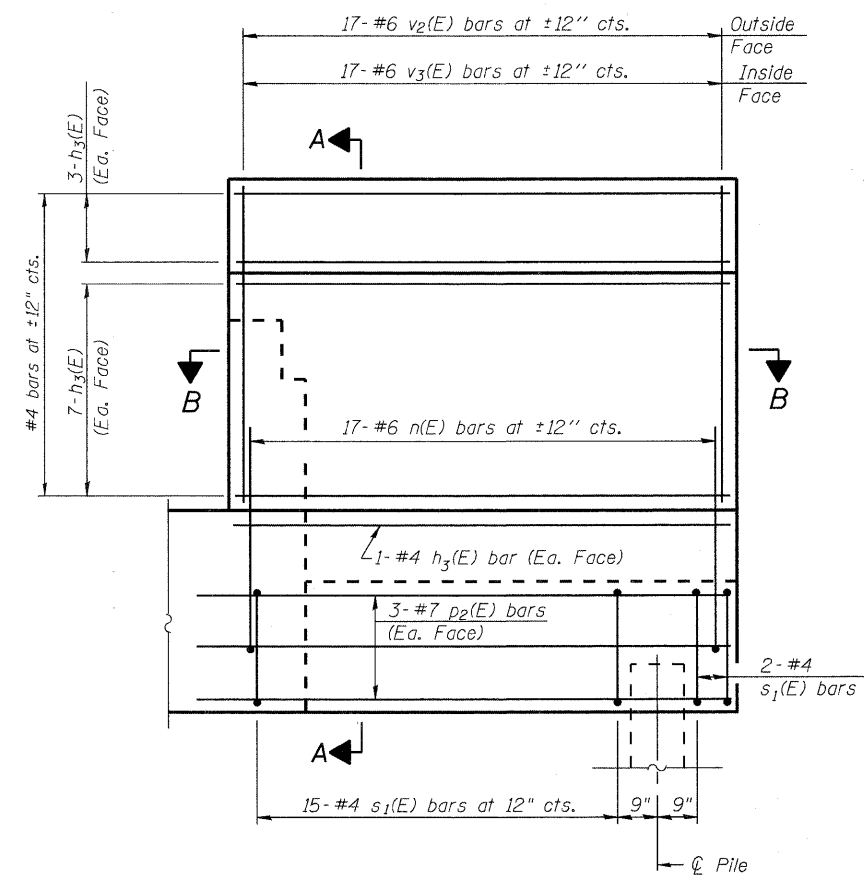
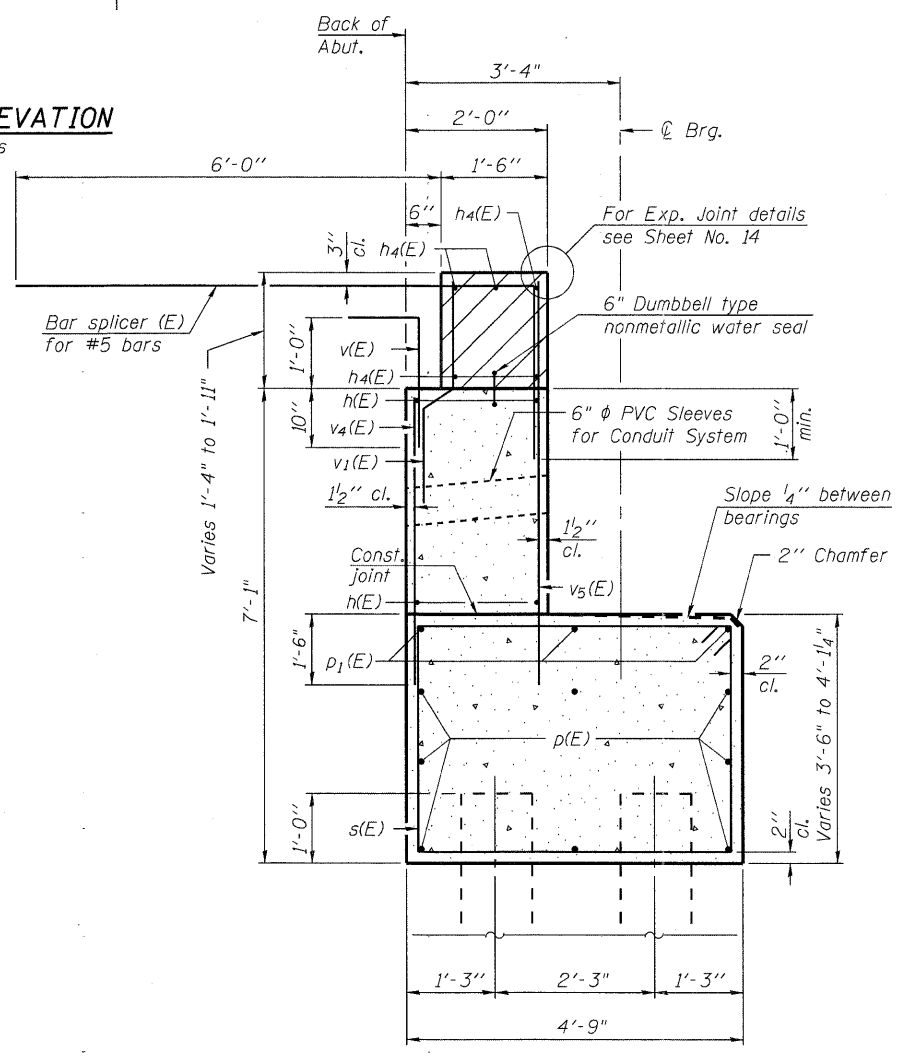


WEST WING WALL ELEVATION
Showing Dimensions

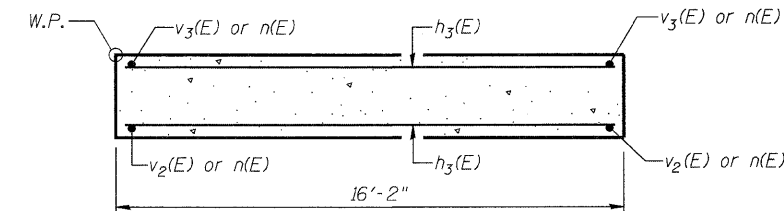
End Post shall be poured after bridge parapet is in place. Form top surface to match parapet grade.



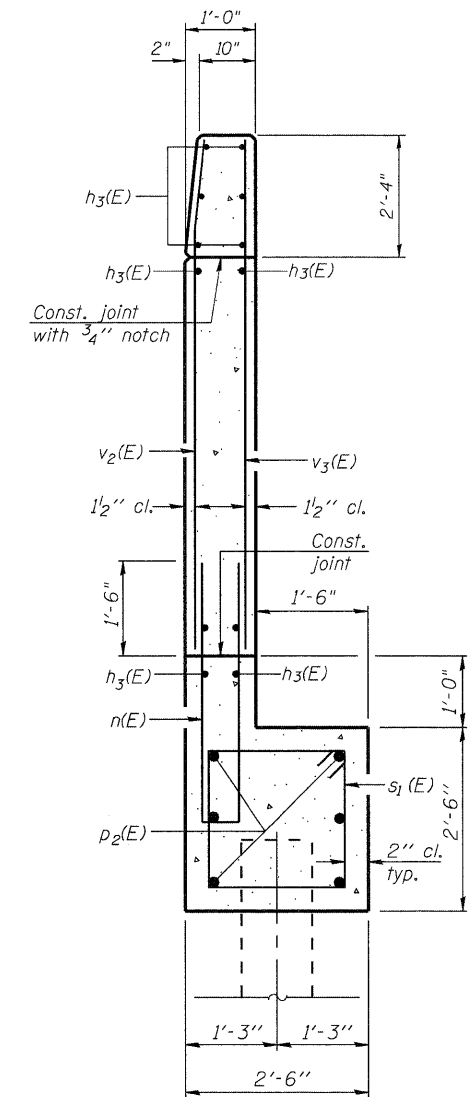
WEST WING WALL ELEVATION
Showing Reinforcement



SECTION THRU ABUTMENT



SECTION B-B



SECTION A-A

Notes:
 Hatched area to be poured after superstructure false work has been removed, see Sheet No. 7. Quantity of concrete included with Concrete Superstructure.
 Space reinforcement in cap to miss anchor bolts.
 Pour steps monolithically with cap.
 Quantity of concrete in end post included with Concrete Superstructure on Sheet No. 11.

ABNA
 DESIGN FIRM REG. 184.002117
 9901 S. Western Ave.
 Chicago, IL 60643
 Ph. 773-881-4788
 F: 773.239.3728

DESIGNED - SEA	REVISSED -
CHECKED - RJL	REVISSED -
DRAWN - SCS	REVISSED -
CHECKED - SEA	REVISSED -

STATE OF ILLINOIS
 DEPARTMENT OF TRANSPORTATION

SOUTH ABUTMENT DETAILS
 STRUCTURE NO. 016-1101
 SHEET NO. 24 OF 36 SHEETS

F.A.U. RTE.	SECTION	COUNTY	TOTAL SHEETS	SHEET NO.
90	1515.1-B	COOK	101	67
STA. TO STA.	CONTRACT NO. 60M79			
FED. ROAD DIST. NO.	ILLINOIS FED. AID PROJECT			