

**ROUTE MARKERS**

FOR U.S. ROUTES  
MI-40-2424

FOR ILLINOIS ROUTES  
MI-50-2424

R.R. UNMARKED ROUTES  
SPECIAL 24" x 18" VARIABLE  
4" BLACK LETTERS ON WHITE  
REFLECTIVE BACKGROUND

**ARROWS SIGNS**

M5-1L-2115

M5-1R-2115

M6-1-2115

M6-1-2115

M6-3-2115

**CARDINAL DIRECTION & DETOUR SIGNS**

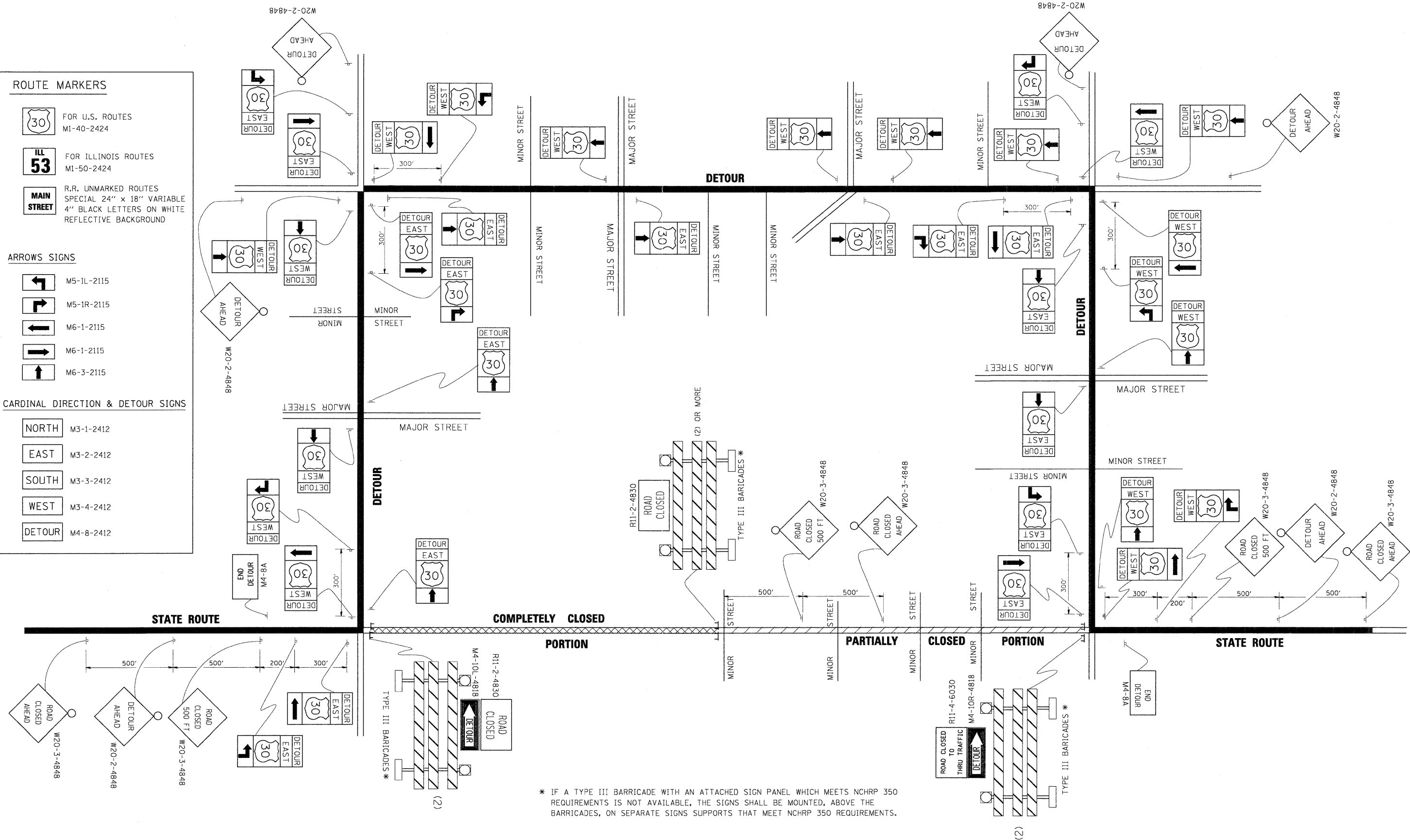
NORTH M3-1-2412

EAST M3-2-2412

SOUTH M3-3-2412

WEST M3-4-2412

DETOUR M4-8-2412



\* IF A TYPE III BARRICADE WITH AN ATTACHED SIGN PANEL WHICH MEETS NCHRP 350 REQUIREMENTS IS NOT AVAILABLE, THE SIGNS SHALL BE MOUNTED, ABOVE THE BARRICADES, ON SEPARATE SIGNS SUPPORTS THAT MEET NCHRP 350 REQUIREMENTS.

FILE NAME =	USER NAME = drivakasn	DESIGNED -	REVISED - 10-18-02	<b>STATE OF ILLINOIS DEPARTMENT OF TRANSPORTATION</b>	<b>DETOUR SIGNING FOR CLOSING STATE HIGHWAYS</b>			F.A.I. RTE.	SECTION	COUNTY	TOTAL SHEETS	SHEET NO.	
at:\pw_work\PIWDOT\DRIVAKASGN\d0128315\21.dgn		DRAWN -	REVISED - R. BORO 09-14-09		SCALE: NONE	SHEET NO. 1 OF 1 SHEETS	STA.	TO STA.	90	1515.1-B	COOK	101	92
		PLOT SCALE = 49.9999' / IN.	REVISED -						<b>TC-21</b>				
		PLOT DATE = 9/14/2009	DATE -						CONTRACT NO. 60M79				
								FED. ROAD DIST. NO. 1 ILLINOIS FED. AID PROJECT					