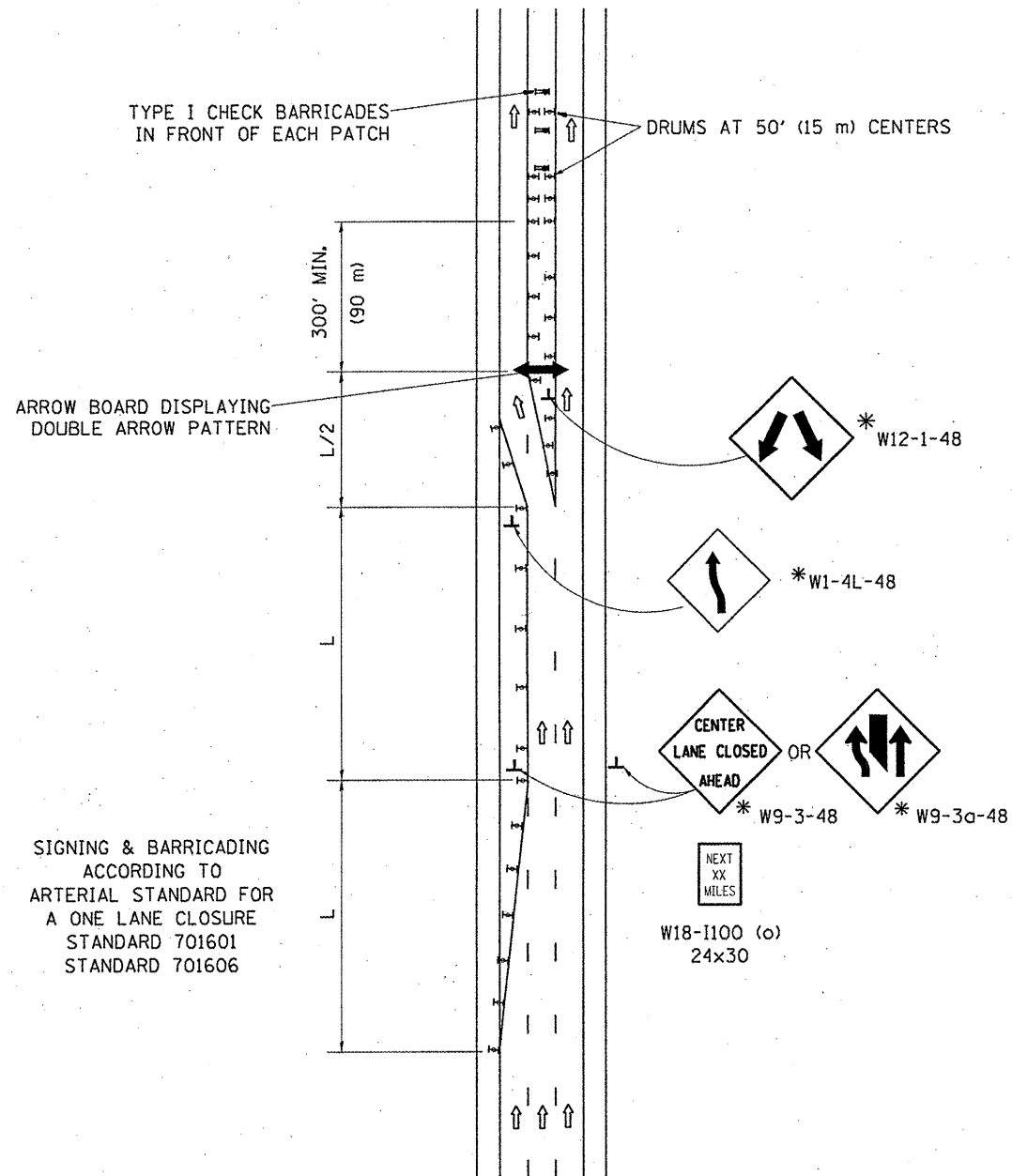


CENTER LANE CLOSURE



- SYMBOLS
- DIRECTION OF TRAFFIC
 - ARROWBOARD
 - ACTIVE WORK AREA
 - SIGN ON PORTABLE OR PERMANENT SUPPORT *
 - TYPE II BARRICADE, OR DRUM WITH MONO-DIRECTIONAL STEADY BURN LIGHT
- * ALL SIGNS SHALL BE MOUNTED AT A MINIMUM HEIGHT OF 5' (1.5 m).

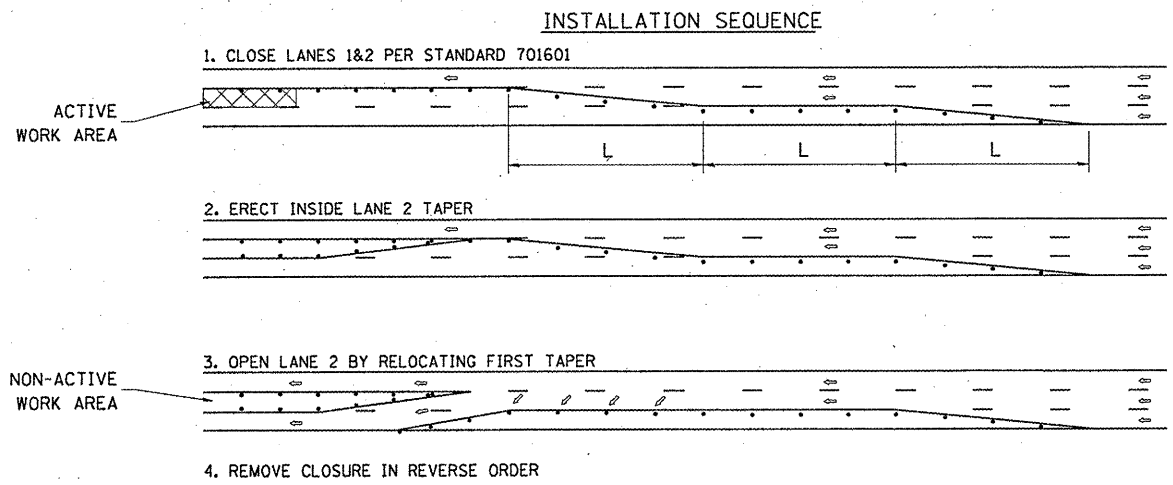
Calculate L as follows:

SPEED LIMIT

	FORMULAS	
	English	(Metric)
40 mph (70 km/h) or less:	$L = \frac{WS^2}{60}$	$L = \frac{WS^2}{150}$
45 mph (80 km/h) or greater:	$L = (W)(S)$	$L = 0.65(W)(S)$

W = Width of offset in feet (meters).

S = Normal posted speed mph (km/h).



- NOTES
1. DRUMS WITH STEADY BURN LIGHTS SHALL BE USED AT 50' (15 m) CENTERS ON ALL TAPERS AND TANGENTS IN ADVANCE OF WORK AREA.
 2. CENTER LANE CLOSURE CONFIGURATION IS NOT TO BE USED WITH WORKERS PRESENT.

ALL DIMENSIONS ARE IN INCHES (MILLIMETERS) UNLESS OTHERWISE SHOWN

FILE NAME =	USER NAME = velichkovv	DESIGNED -	REVISED -
ct:\pwork\pwork\velichkovv\0259794\	esign.dgn	DRAWN -	REVISED -
	PLOT SCALE = 100.0000' / in.	CHECKED -	REVISED -
	PLOT DATE = 9/26/2011	DATE -	REVISED -

**STATE OF ILLINOIS
DEPARTMENT OF TRANSPORTATION**

TRAFFIC CONTROL DETAILS FOR ARTERIAL CENTER LANE CLOSURE			
SCALE: NONE	SHEET NO. 1 OF 1 SHEETS	STA. TO STA.	F.A. RTE. SECTION COUNTY TOTAL SHEET NO.
			VAR. 2011-002-PP COOK 22 21
			CONTRACT NO. 60N90
FED. ROAD DIST. NO. 1 ILLINOIS FED. AID PROJECT			