

STATE OF ILLINOIS  
 DEPARTMENT OF TRANSPORTATION  
 DIVISION OF HIGHWAYS

**PROPOSED  
 HIGHWAY PLANS**

FAU ROUTE 3887: IL 31  
 McHENRY COUNTY LINE TO STROM DRIVE  
 SECTION S-RS-5

**RESURFACING (3P) AND MILLED RUMBLE STRIP  
 KANE COUNTY  
 C-91-466-11**

F.A.U. RTE.	SECTION	COUNTY	TOTAL SHEETS	SHEET NO.
3887	S-RS-5	KANE	33	1
		ILLINOIS	CONTRACT NO. 60P12	

FOR INDEX OF SHEETS, SEE SHEET NO. 2

PROJECT IS LOCATED IN  
 THE VILLAGES OF  
 ALGONQUIN, WEST DUNDEE  
 & CARPENTERSVILLE

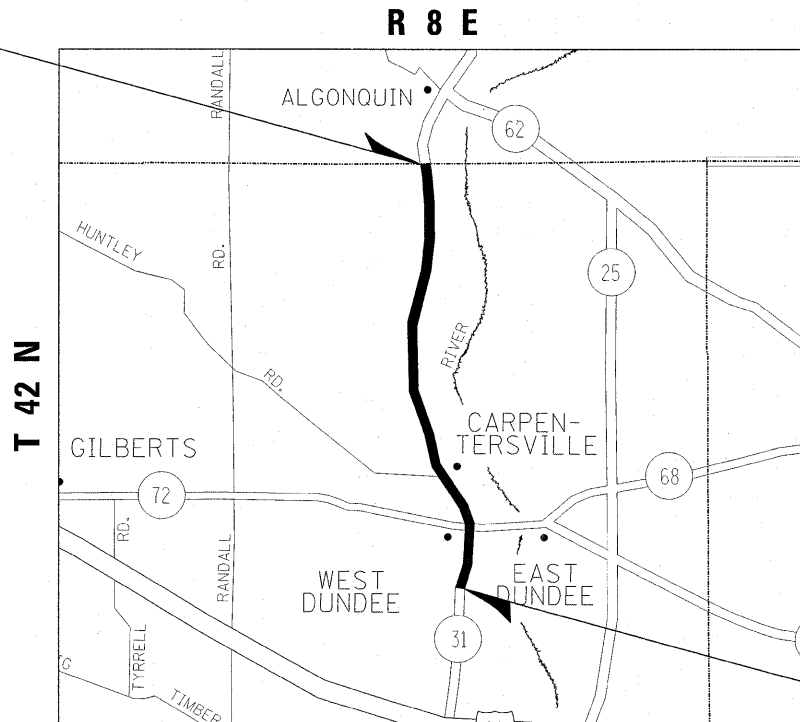
D-91-466-11



LOCATION OF SECTION INDICATED THIS: — ■ —

PROJECT ENDS:  
 STATION 598 + 71

OMISSIONS:  
 372 + 82 TO 391 + 29  
 420 + 18 TO 426 + 57

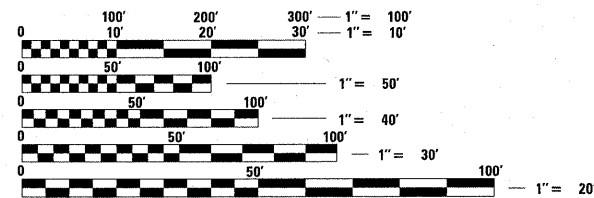


**TRAFFIC DATA:**

IL 31 (NORTH OF HUNTLEY ROAD)  
 SPEED LIMIT = 35 - 50 MPH  
 2009 ADT = 18,100

IL 31 (SOUTH OF HUNTLEY ROAD)  
 SPEED LIMIT = 35 MPH  
 2009 ADT = 28,900

PROJECT BEGINS:  
 STATION 354 + 00



FULL SIZE PLANS HAVE BEEN PREPARED USING STANDARD ENGINEERING SCALES. REDUCED SIZED PLANS WILL NOT CONFORM TO STANDARD SCALES. IN MAKING MEASUREMENTS ON REDUCED PLANS, THE ABOVE SCALES MAY BE USED.

J.U.L.I.E.  
 JOINT UTILITY LOCATION INFORMATION FOR EXCAVATION  
 1-800-892-0123  
 OR 811

PROJECT ENGINEER: DAN WILGREEN (847) 705-4240  
 PROJECT MANAGER: KEN ENG

CONTRACT NO. 60P12

GROSS LENGTH = 24,471 FEET = 4.63 MILES

NET LENGTH = 21,985 FEET = 4.16 MILES

STATE OF ILLINOIS  
 DEPARTMENT OF TRANSPORTATION  
 DIVISION OF HIGHWAYS

SUBMITTED OCTOBER 25, 20 11

Diana M. O'Keefe DEPUTY DIRECTOR OF HIGHWAYS, REGION ENGINEER  
December 9 20 11

Scott E. Stitt P.E. acting ENGINEER OF DESIGN AND ENVIRONMENT  
December 9 20 11

William R. Fleury INTERIM DIRECTOR OF HIGHWAYS, CHIEF ENGINEER

PRINTED BY THE AUTHORITY  
 OF THE STATE OF ILLINOIS