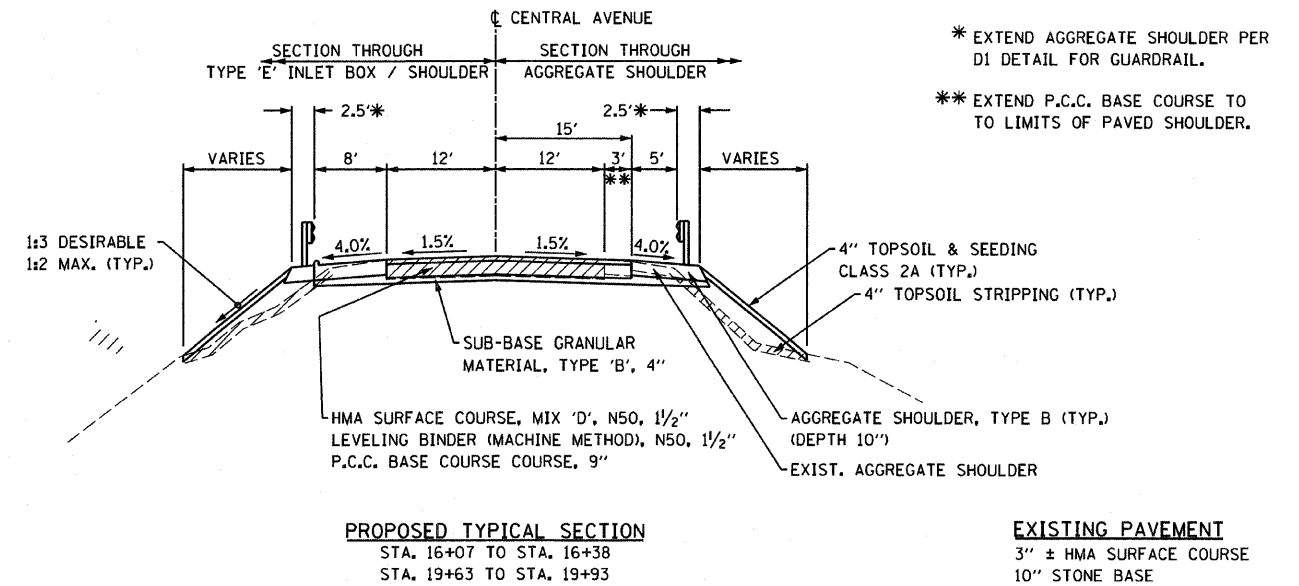
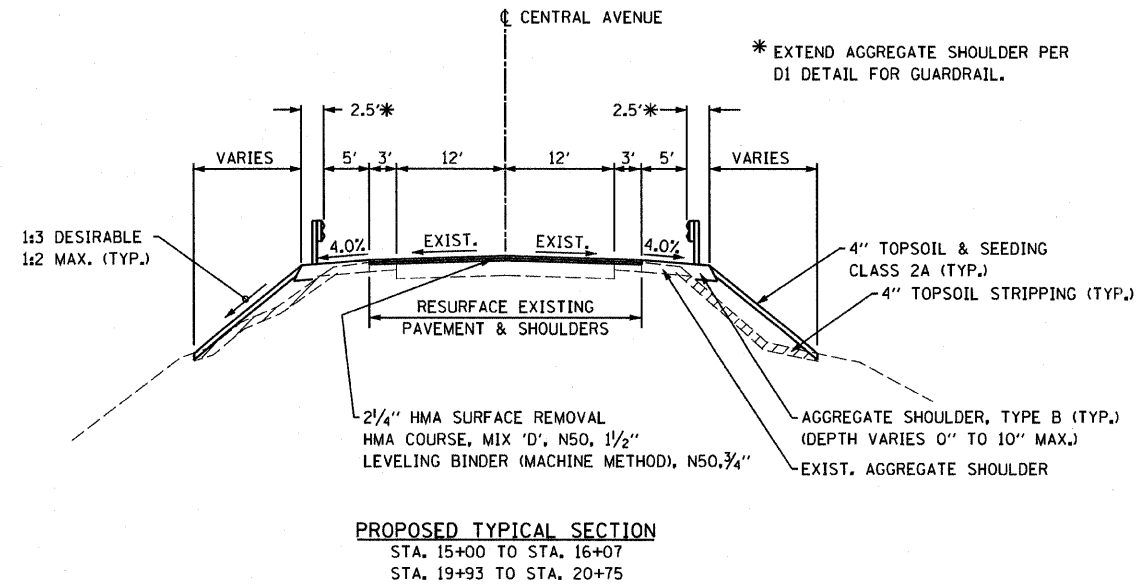


DATE	
BY	
FINAL SURVEY	
PLOTTED	
NOTE BOOK	
TEMPLATE	
AREAS CHECKED	
NO.	

DATE	
BY	
ORIGINAL SURVEY	
PLOTTED	
NOTE BOOK	
TEMPLATE	
AREAS CHECKED	
NO.	

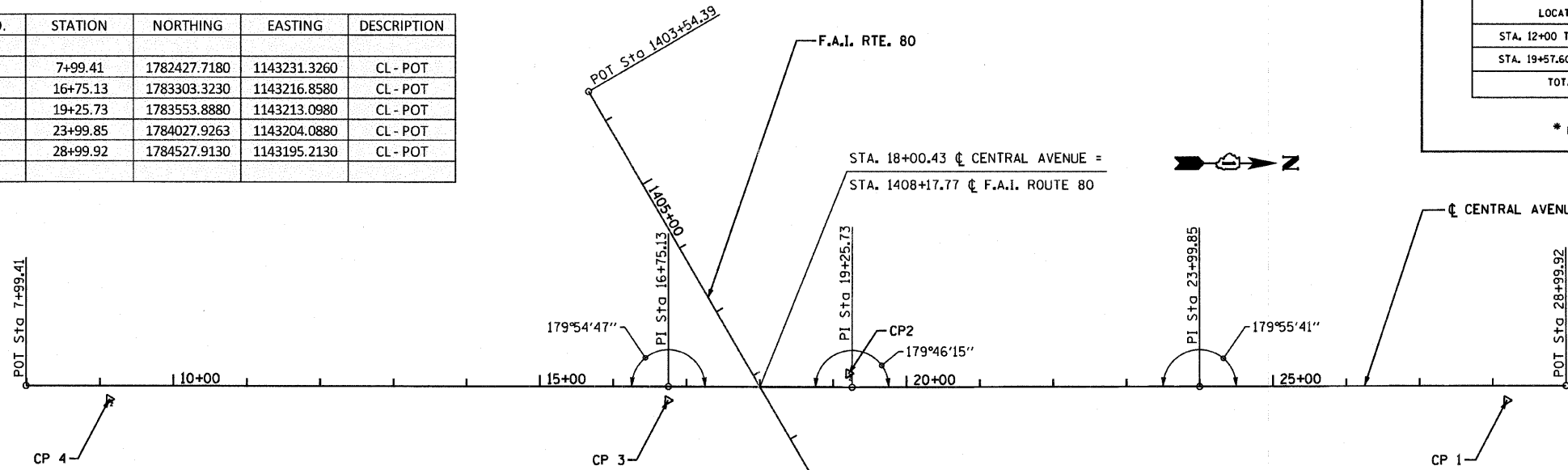


ALIGNMENT POINTS

ROADWAY	POINT NO.	STATION	NORTHING	EASTING	DESCRIPTION
CENTRAL AVE.	A1	7+99.41	1782427.7180	1143231.3260	CL - POT
	A2	16+75.13	1783303.3230	1143216.8580	CL - POT
	A3	19+25.73	1783553.8880	1143213.0980	CL - POT
	A4	23+99.85	1784027.9263	1143204.0880	CL - POT
	A5	28+99.92	1784527.9130	1143195.2130	CL - POT

LOCATION	EARTH EXCAVATION *	UNSUITABLE	EMBANKMENT
STA. 12+00 TO 16+44.60	50	130	185
STA. 19+57.60 TO 24+00	50	152	303
TOTAL	100	282	488

* FOR APPROACH SLAB AND PAVEMENT CONSTRUCTION



CONTROL POINTS ON CENTRAL AVENUE

POINT NO.	STATION	OFFSET	NORTHING	EASTING	DESCRIPTION
800	28+19.17	20.06	1784447.5320	1143216.7030	CP1 - PK NAIL
801	19+21.05	-18.38	1783548.9360	1143194.7940	CP2 - PK NAIL
802	16+74.47	19.13	1783302.9760	1143236.0010	CP3 - PK NAIL
803	9+12.84	18.74	1782541.4410	1143248.1870	CP4 - PK NAIL

MIXTURE TYPE	% AIR VOIDS @ Ndes
PAVEMENT RESURFACING	
HOT-MIX ASPHALT SURFACE COURSE MIX D, N50, 1-1/2" (IL-9.5 mm)	4% @ 50 GYR.
LEVELING BINDER (MACHINE METHOD), N50, 3/4" - 1 1/2" (IL-9.5 mm)	4% @ 50 GYR.
HMA PLUG 36" WIDTH (SEE STD 353001)	
HOT-MIX ASPHALT BINDER COURSE, IL-19.0, N50, 9" (3 LIFTS)	4% @ 50 GYR.

NOTES:

1. THE UNIT WEIGHT USED TO CALCULATE ALL HOT-MIX ASPHALT SURFACE MIXTURES IS 112 LBS/SQ YD/IN.
2. THE "AC TYPE" FOR POLYMERIZED HMA MIXES SHALL BE "SBS/SBR PG 76 -22" AND FOR NON-POLYMERIZED HMA, THE "AC TYPE" SHALL BE "PG 64 -22" UNLESS MODIFIED BY DISTRICT ONE SPECIAL PROVISIONS.
3. FOR "PERCENT OF RAP" SEE DISTRICT ONE SPECIAL PROVISIONS.

BENCH MARK:
 DISK SET IN CONCRETE 50' EAST OF C CENTRAL AVE. & 31' NORTH OF C 183rd ST.
 ELEV. 696.42

T.B.M.
 SQUARE CUT TOP OF WINGWALL AT STA. 17+65, 20' LT.
 ELEV. 724.94

FILE NAME = D160P17-tp1001.dgn
 PLOT DATE = 12/10/2011
 PLOT SCALE = 100.0000' / IN.

DESIGNED - S.J.P./K.R.K.
 DRAWN - B.K.
 CHECKED - E.J.M.
 DATE - DECEMBER 9, 2011

REVISED -
 REVISED -
 REVISED -
 REVISED -

**STATE OF ILLINOIS
 DEPARTMENT OF TRANSPORTATION**

**TYPICAL SECTION, ALIGNMENT AND DETAILS
 CENTRAL AVENUE OVER I-80**

SCALE: SHEET NO. 1 OF 1 SHEETS STA. TO STA.

F.A.I. RTE. 80	SECTION 1415-803HB-R	COUNTY COOK	TOTAL SHEETS 51	SHEET NO. 6
CONTRACT NO. 60P17				
FED. ROAD DIST. NO. 1 ILLINOIS FED. AID PROJECT				