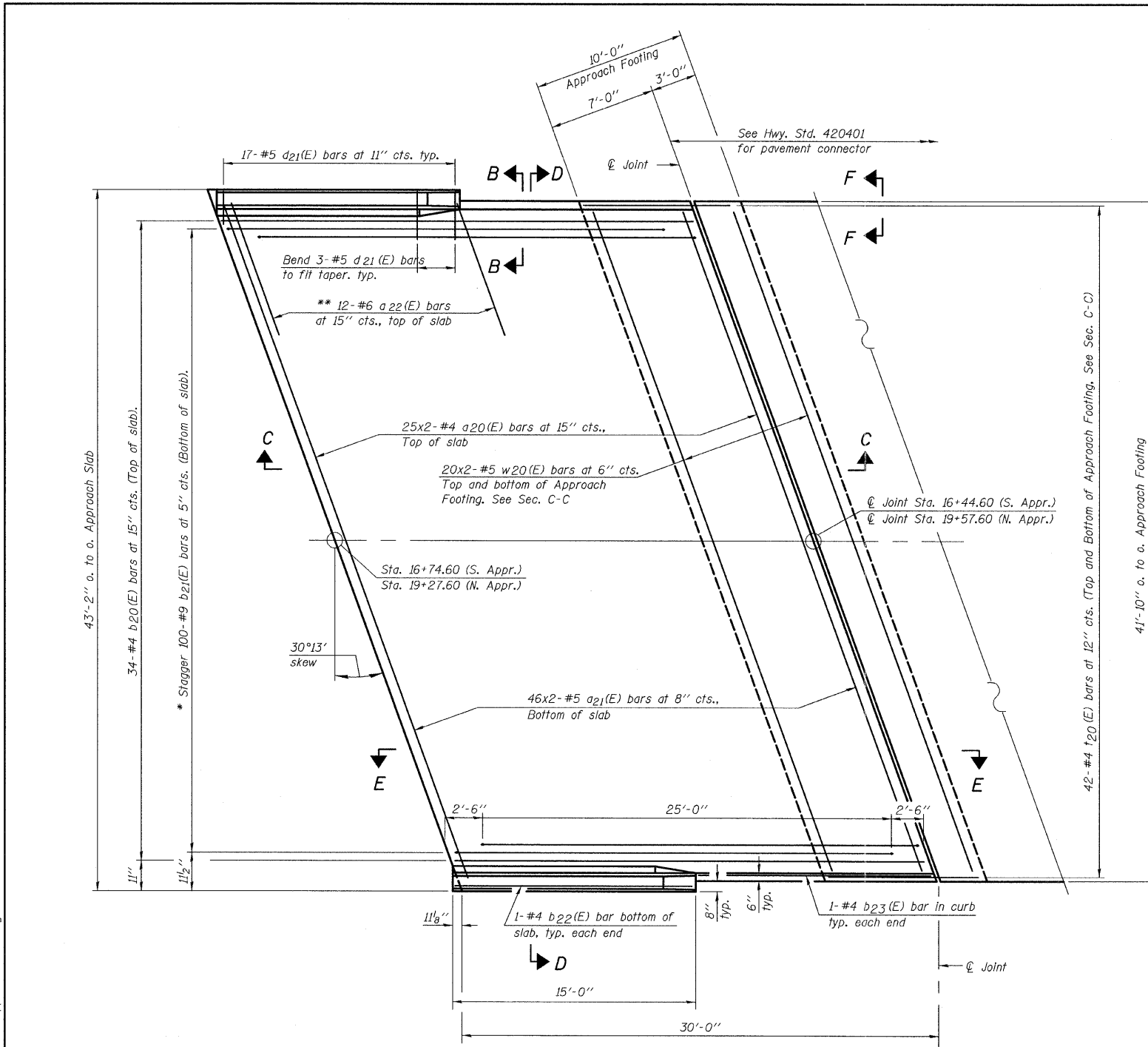


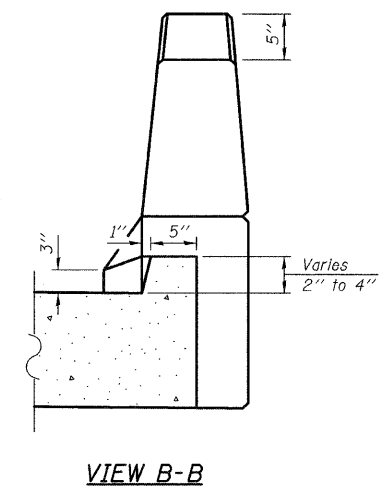
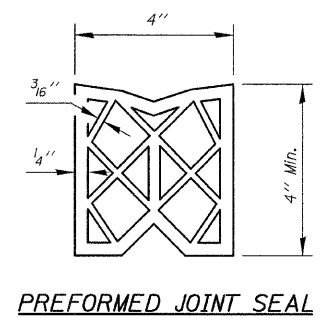
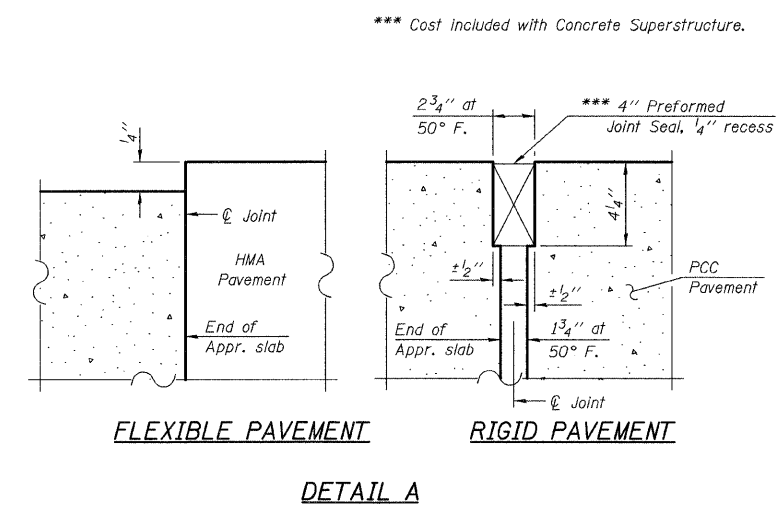
FILE NAME = I:\102505_Central_Ave\Structural\CADD Sheets\DI60P17-12-approach_slab_det-1.dgn



PLAN
(North Approach Slab Shown)
(South Approach Slab Opp. Hand)

* Tilt #9 b₂₁(E) bars as required to maintain clearance.
** Space between a₂₀(E) bars, typ. each parapet.

Notes:
See sheet S13 for Sections C-C & D-D and View E-E.
a₂₀(E) and a₂₁(E) bar spacings measured along @ Rdwy.



MIN. BAR LAP:
#4 Bar = 1'-10"
#5 Bar = 2'-6"

BA-R 7-1-10



USER NAME = IDOT	DESIGNED - J.C.N./B.N.S.	REVISED -
PLOT SCALE = 50.000000' / IN.	CHECKED - B.N.S.	REVISED -
PLOT DATE = 12/10/2011	DRAWN - F.M.	REVISED -
	DATE - DECEMBER 9, 2011	REVISED -

STATE OF ILLINOIS
DEPARTMENT OF TRANSPORTATION

BRIDGE APPROACH SLAB DETAILS-I
STRUCTURE NO. 016-2458

SHEET NO. S12 OF S24 SHEETS

F.A.I. RTE. 80	SECTION 1415-803HB-R	COUNTY COOK	TOTAL SHEETS 51	SHEET NO. 27
				CONTRACT NO. 60P17
ILLINOIS FED. AID PROJECT				