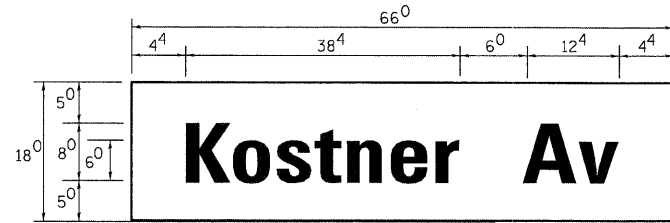
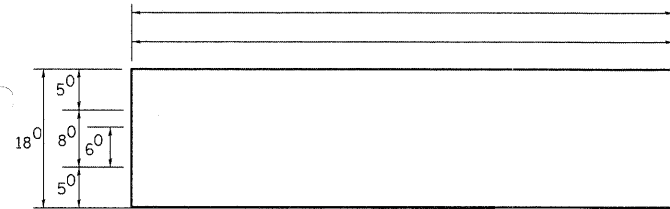


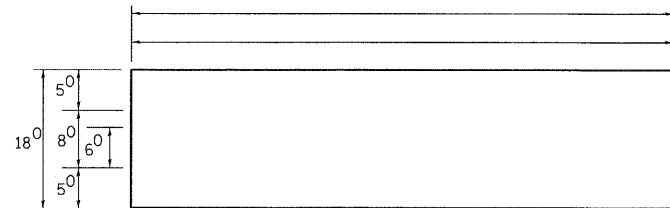
PANEL SIGN DESIGN TYPE 1



— Sq. M. each
8.25 Sq. Ft. each
— 2 Required
Design Series "D"



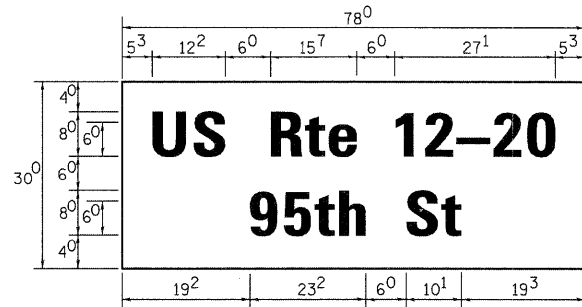
— Sq. M. each
— Sq. Ft. each
— Required
Design Series



— Sq. M. each
— Sq. Ft. each
— Required
Design Series

NOTE: SIGN DIMENSIONS ARE IN ENGLISH UNITS

PANEL SIGN DESIGN TYPE 2



— Sq. M. each
16.25 Sq. Ft. each
— 2 Required
Design Series "D"

SUPPORTING CHANNELS

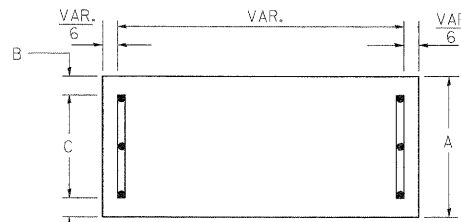
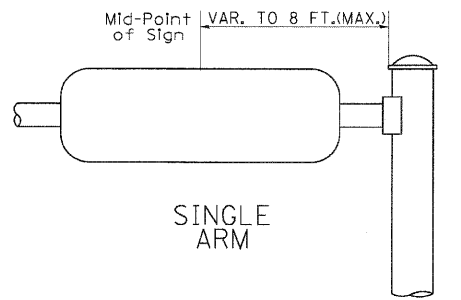


Table with 3 columns: A (18"), B (2"), C (14")



SUPPORTING CHANNELS

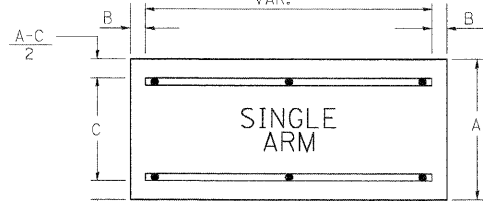


Table with 3 columns: A (30"), B (2"), C (22")

Upper Case To Lower Case
Spacing Chart 8-6 Inch Series "C & D"

Spacing Chart 8-6 Inch Series "C & D" table with columns for SERIES, C, D, and rows for letters A-Z.

Lower Case To Lower Case
Spacing Chart 6 Inch Series "C & D"

Spacing Chart 6 Inch Series "C & D" table with columns for SERIES, C, D, and rows for letters a-z.

EXAMPLE, 2 3 DENOTES 3/8

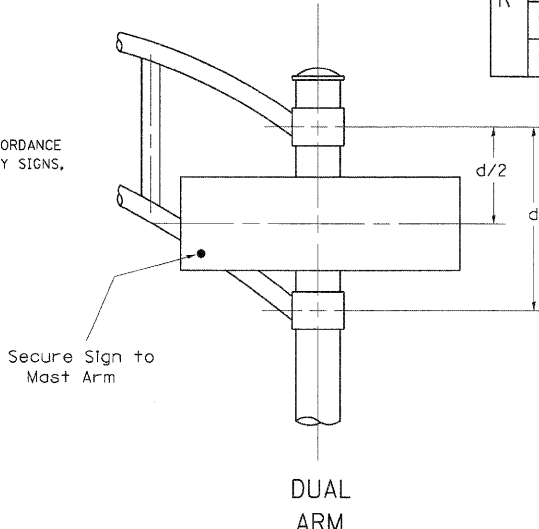
UPPER AND LOWER CASE
LETTER WIDTHS

Table showing letter widths for 6 inch upper case, 8 inch upper case, and 6 inch lower case letters.

GENERAL NOTES

- 1. WHERE MAST ARM MOUNTED STREET NAME SIGNS ARE SPECIFIED, THE MAST ARM ASSEMBLY AND POLES SHALL BE DESIGNED TO SUPPORT THE LOADINGS CALLED FOR ON STANDARDS 877001, 877002, 877006, 877011 AND 877012...
2. ALL SIGNS SHALL HAVE A WHITE REFLECTORIZED LEGEND AND BORDER ON A GREEN REFLECTORIZED BACKGROUND, TYPE A SHEETING.
3. THE SIGN LENGTH SHOULD BE INCREASED IN 6-INCH INCREMENTS, BUT THE OVERALL LENGTH SHOULD NOT EXCEED 8'-0".
4. ALL BORDERS SHALL BE 3/4" WIDE AND CORNER RADIUS SHALL BE 2-1/4 ".
5. SIGNFIX ALUMINUM CHANNEL FRAMING SYSTEM SHALL BE USED FOR ALL SIGNS ATTACHED TO SIGNAL POLES AND POSTS.

* J.O. HERBERT CO. MIDLOTHIAN, VA. * WESTERN REMAC INC. WOODRIDGE, IL.



DUAL ARM

SIGNFIX ALUMINUM CHANNEL FRAMING SYSTEM shall be used. See Note #5.

Number To Number

Spacing Chart 8 Inch Series "C & D"

Number to Number spacing chart with columns for SERIES, C, D, and rows for numbers 0-9.

Table showing letter widths for 6 inch series and 8 inch series.