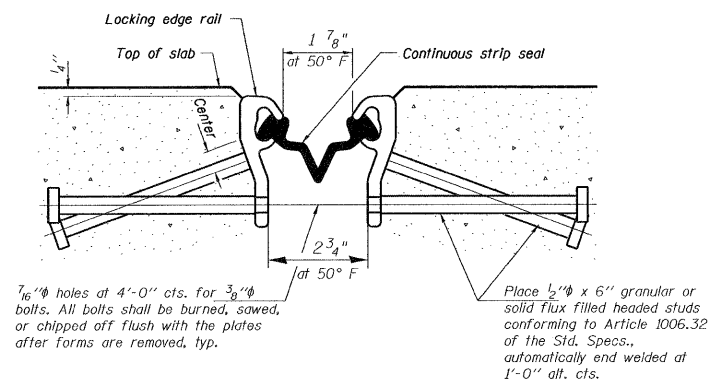
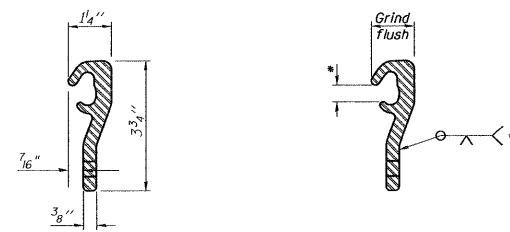


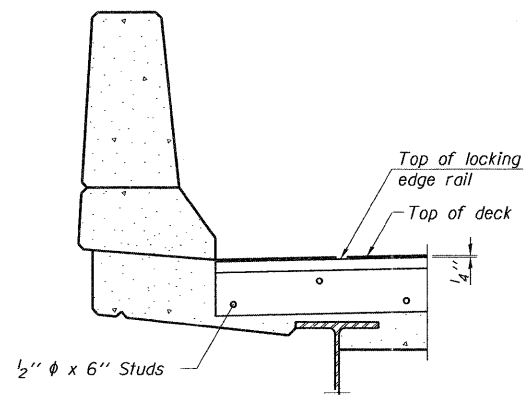
*** FOR END TREATMENT DETAILS REFER TO SHEET 10



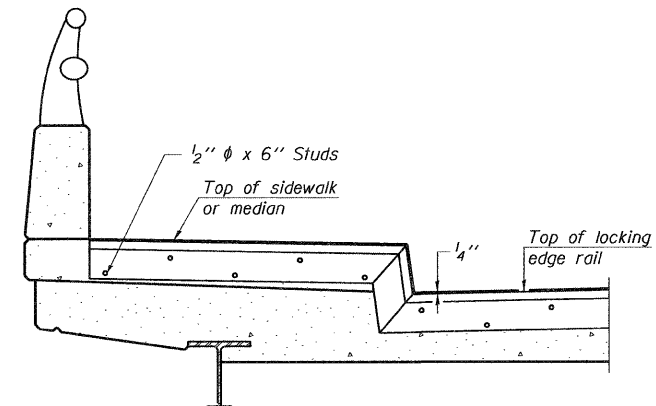
SECTION THRU STRIP SEAL JOINT



LOCKING EDGE RAIL LOCKING EDGE RAIL SPLICE
* Omit weld at seal opening.

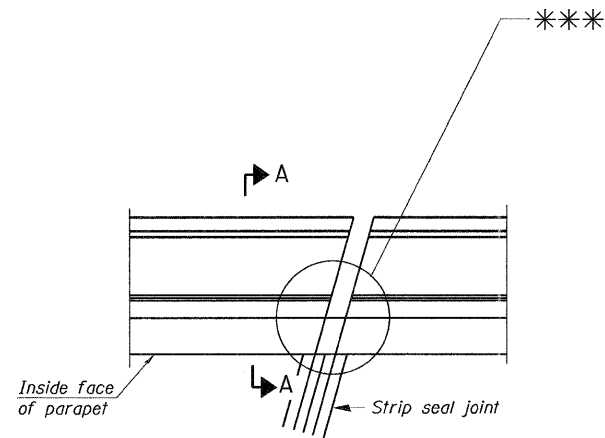


SECTION A-A



TYPICAL END TREATMENT AT SIDEWALK OR MEDIAN

TYPICAL END TREATMENTS



PLAN
(For Skew > 30°)
Showing point Block

Notes:

The strip seal shall be made continuous and shall have a minimum thickness of 1/4". The configuration of the strip seal shall match the configuration of the Locking Edge Rails.

The height and thickness of the Locking Edge Rails shown are minimum dimensions. The actual configuration of the Locking Edge Rails and matching strip seal may vary from manufacturer to manufacturer. Flanged edge rails will not be allowed.

The inside of the Locking Edge Rail groove shall be free of weld residue.

Locking Edge Rails may be spliced at slope discontinuities and stage construction joints.

The manufacturer's recommended installation methods shall be followed.

The joint opening and deck dimensions detailed on the superstructure are based on a rolled rail expansion joint. If the Contractor elects to use the welded rail expansion joint, the opening and deck dimensions shall be modified according to the dimensions detailed on this sheet. Required modifications shall be made at no additional cost to the State.

All steel components shall be galvanized after fabrication according to Article 520.03 of the Standard Specifications.

Maximum space between rail segments at stage lines shall be 3/16", sealed with a suitable sealant.

Parapet plates and anchorage studs for skews > 30° included in the cost of Preformed Joint Strip Seal.

The Inside of the Locking Edge Rail groove shall be free of weld residue.

BILL OF MATERIAL

Item	Unit	Total
Preformed Joint Strip Seal	Foot	180

PREFORMED JOINT STRIP SEAL
STRUCTURE NO. 016-0478

FILE NAME =	USER NAME = patelar	DESIGNED - ANAND PATEL	REVISED -	STATE OF ILLINOIS DEPARTMENT OF TRANSPORTATION	I-9094 (DAN RYAN EXPRESSWAY AT ROOSEVELT ROAD PREFORMED JOINT STRIP SEAL S.N. 016-0478)	F.A.I. RTE.	SECTION	COUNTY	TOTAL SHEETS	SHEET NO.
c:\pw_work\pwr\dot\patelar\d0201223\0162711-shr-plan.dgn	DRAWN - MARK V. TINIAKOS	REVISIED -	90/94			2011-070-1	COOK	27	12	
PLOT SCALE = 50.0000' / in.	CHECKED - ANAND PATEL	REVISIED -	CONTRACT NO. 60P89							
PLOT DATE = 12/13/2011	DATE - 11/02/11	REVISIED -	ILLINOIS FED. AID PROJECT							
					SCALE:	SHEET NO. 6 OF 6 SHEETS		STA.	TO STA.	