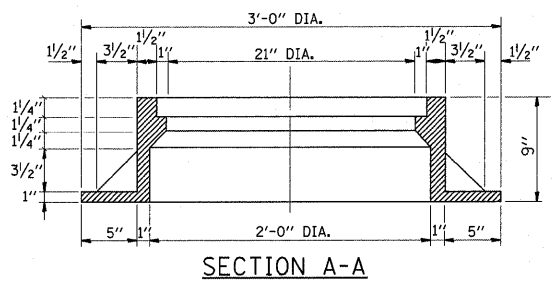


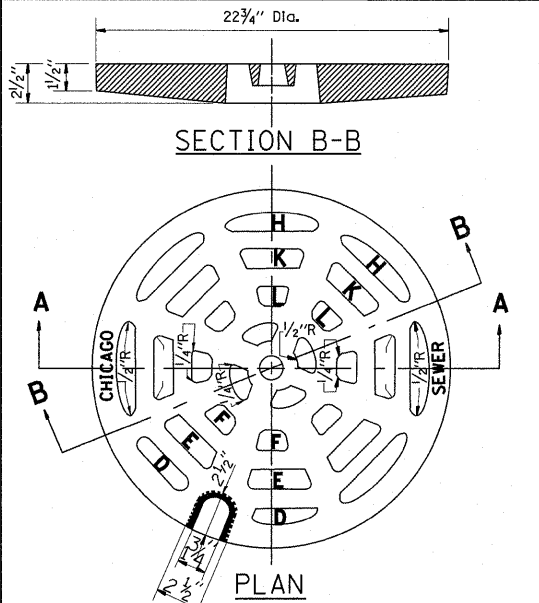
PLAN



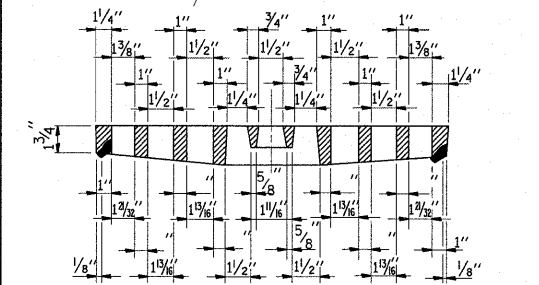
SECTION A-A

NOTE: METAL PLATES MUST BE FURNISHED FOR PERFORATED LIDS ON MANHOLES

**CHICAGO STANDARD MANHOLE FRAME**  
SCALE: 1/2"=1'-0"  
MATERIAL: CAST IRON

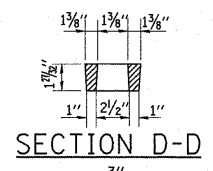


PLAN

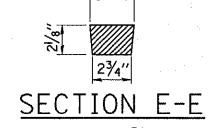


SECTION A-A

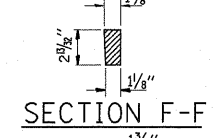
**PERFORATED LID FOR CATCH BASINS & MANHOLES**  
SCALE: 2"=1'-0"  
MATERIAL: CAST IRON



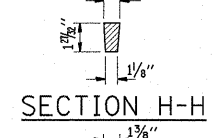
SECTION D-D



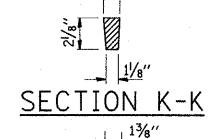
SECTION E-E



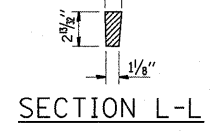
SECTION F-F



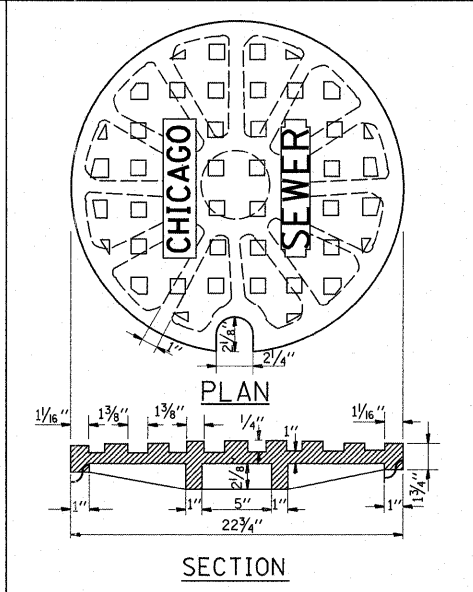
SECTION H-H



SECTION K-K

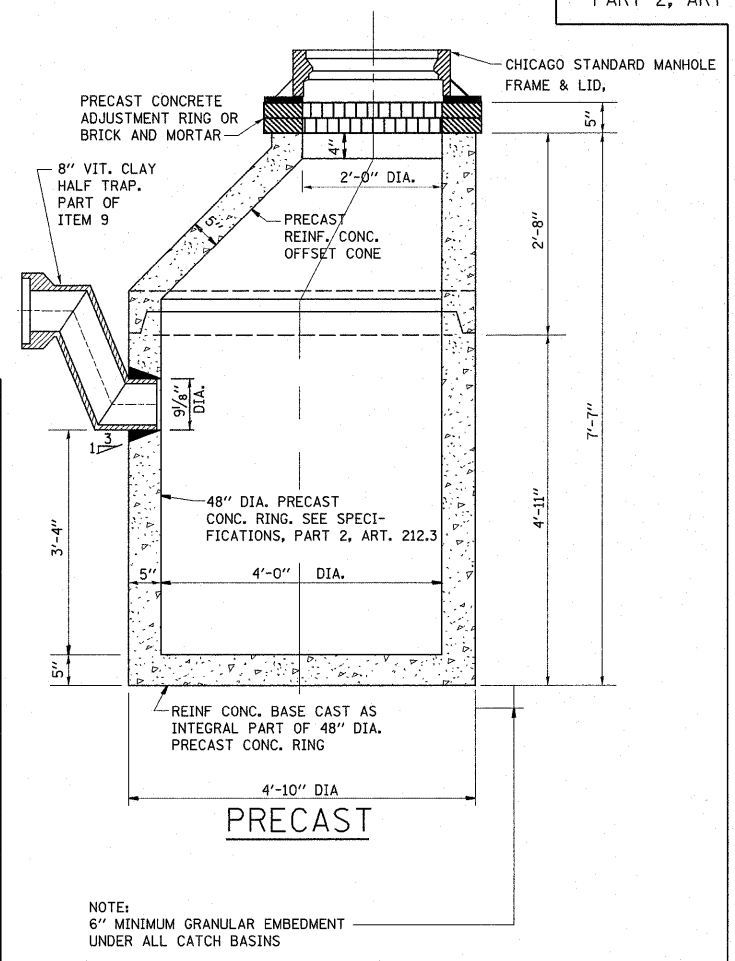


SECTION L-L



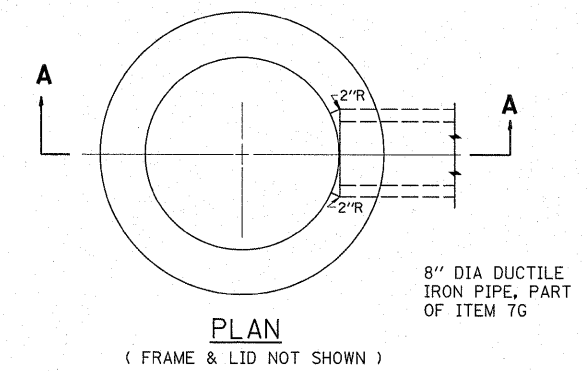
SECTION

**SOLID LID FOR MANHOLES**  
SCALE: NONE  
MATERIAL: CAST IRON



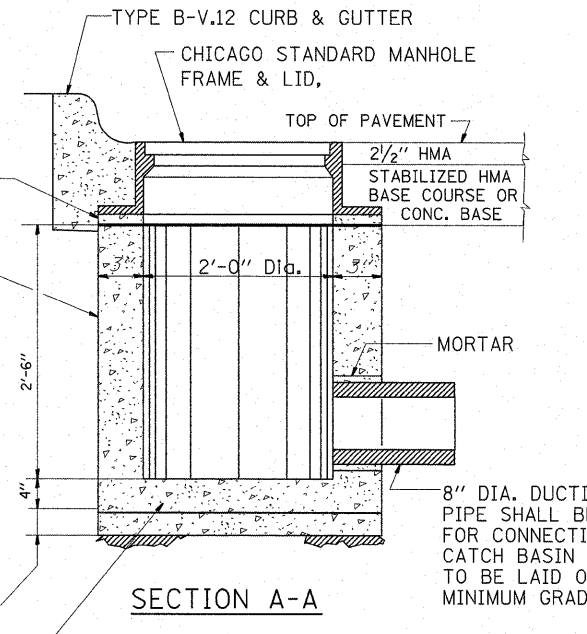
**STANDARD CATCH BASINS**  
SCALE: 3/4"=1'-0"  
ITEM 9

NOTE: 6" MINIMUM GRANULAR EMBEDMENT UNDER ALL CATCH BASINS



PLAN  
(FRAME & LID NOT SHOWN)

8" DIA DUCTILE IRON PIPE, PART OF ITEM 7G

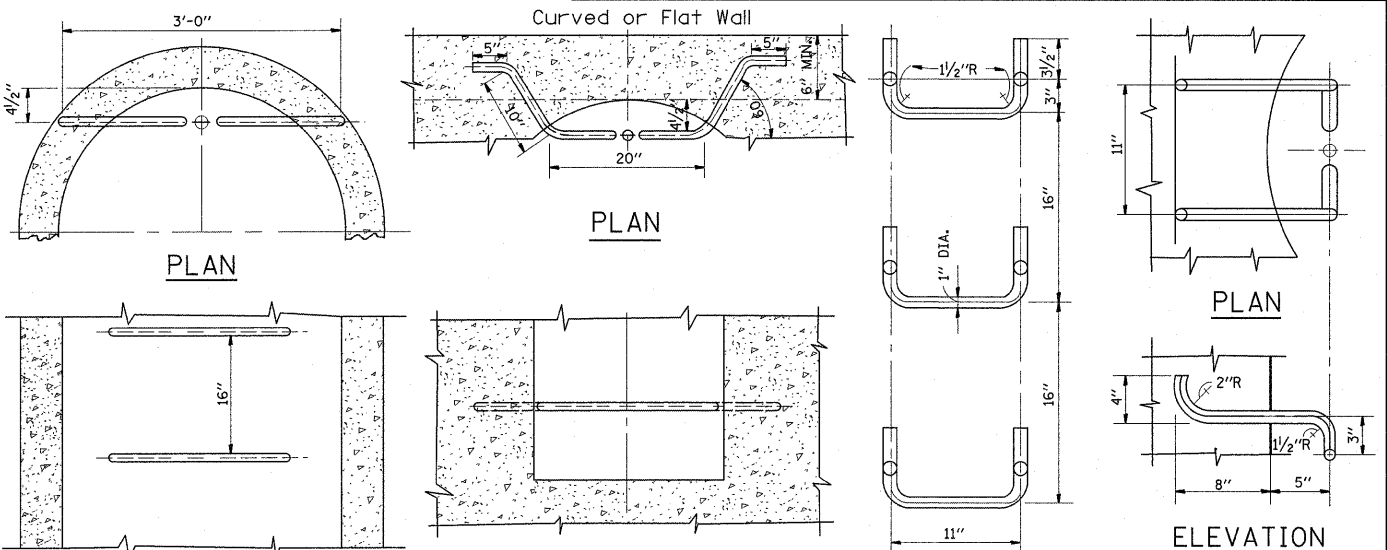


SECTION A-A

REINF. CONC. BASE CAST AS INTEGRAL PART OF 24" DIA. PRECAST CONC. RING  
6" MINIMUM GRANULAR EMBEDMENT UNDER ALL INLETS. FURNISHING AND INSTALLING GRANULAR EMBEDMENT SHALL BE INCLUDED IN THE UNIT PRICE BID FOR ITEM 12

**STANDARD INLETS**  
SCALE 1"=1'-0"  
ITEM 12  
THIS INLET DETAIL IS SOMETIMES REFERRED TO AS "CHICAGO STANDARD INLET, TYPE A"

NOTE: INLETS SHALL NOT BE CONSTRUCTED UNLESS IT IS IMPOSSIBLE TO CONSTRUCT A CATCH BASIN. THE CONTRACTOR SHALL HAVE THE DEPARTMENT OF SEWERS APPROVAL BEFORE CONSTRUCTING INLETS.



ELEVATION TYPE X

ELEVATION TYPE Y

SPACING HANDHOLD-TYPE Z RUNG

SCALE: 1"=1'-0"

SCALE: 1"=1'-0"

Scale: 1/2"=1'-0"

**STANDARD LADDER RUNGS**

ALL LADDER RUNGS SHALL BE ALUMINUM OR GALVANIZED WROUGHT IRON AS SPECIFIED IN THE SPECIFICATIONS, PART 2, ARTICLE 214.2. RUNGS SHALL BE 1" DIAMETER OR OF A SHAPE HAVING AN EQUIVALENT CROSS-SECTIONAL AREA.

FILE NAME =	USER NAME = gorengautab	DESIGNED - M. GOMEZ	REVISED -
c:\pwwork\pwsdot\gorengautab\d0281223\0162711-sht-plan.dgn		DRAWN -	REVISED -
PLOT SCALE = 50.0000 / in.		CHECKED -	REVISED -
PLOT DATE = 11/3/2011		DATE - 01-25-01	REVISED -

STATE OF ILLINOIS  
DEPARTMENT OF TRANSPORTATION

CITY OF CHICAGO  
CATCH BASIN, INLET AND MANHOLE DETAILS

SCALE: NONE SHEET NO. 1 OF 1 SHEETS STA. TO STA.

F.A.I. RTE. 90/94	SECTION 2011-070-1	COUNTY COOK	TOTAL SHEETS 27	SHEET NO. 20
BD600-13 (BD47)		CONTRACT NO. 60P89		
FED. ROAD DIST. NO. 1 ILLINOIS FED. AID PROJECT				